

LE COEUR

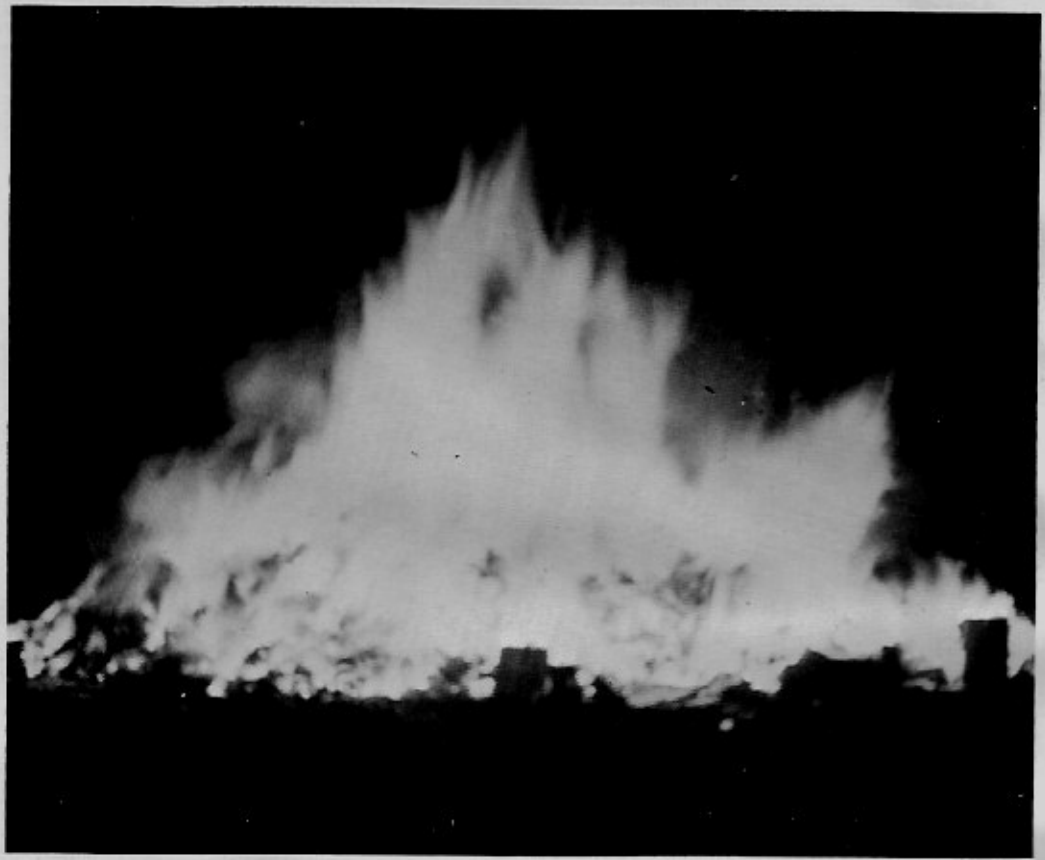
20

1970 Le Coeur



Immaculate Heart of Mary

Coeur d'Alene, Idaho



"A world of shining hope for you . . .

. . . and me."

Opening Page 2
Theme

Personnel Page 4

Students Page 10

Activities Page 32

Sports Page 49

Patrons Page 62

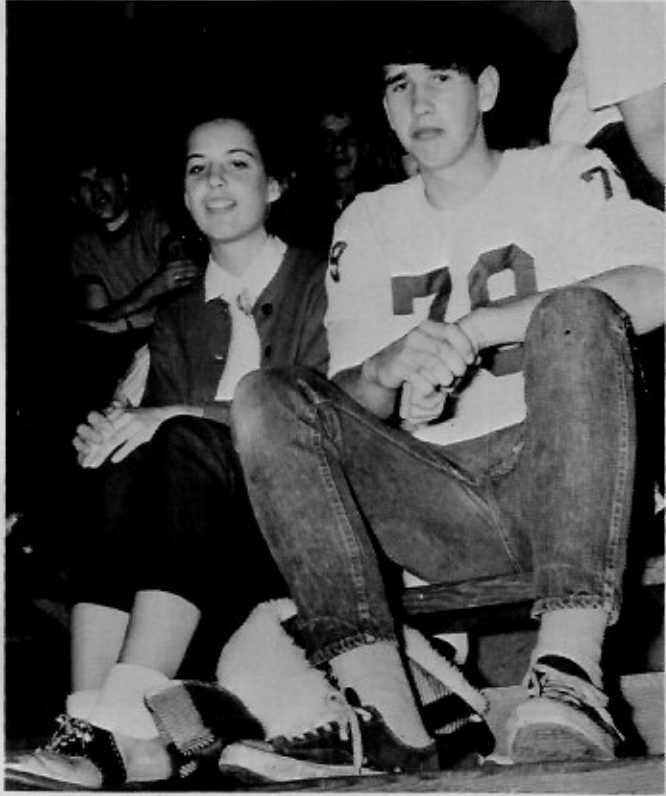


Toni,
To a great
but good luck
Shyla

Toni,
Frogs are sure
fun to catch,
right. I'll
have to go again
Jan



"A new world"



"A time for us"

"When chains are torn by courage born"

"Someday there'll be . . ."





Personnel



Sister M. Ida
Principal, Geometry



Sister M. Ida



Mr. John DeLong
Assistant Coach



Sophomore Advisor,
Sociology, Biology,
Physical Education,
Religion II

Mrs. John Nelson
English II



Sister M. Alphonsa

Senior Advisor, French I,
II, III, World History,
Music, Glee Club Director,
Religion IV



Sister Christine Marie

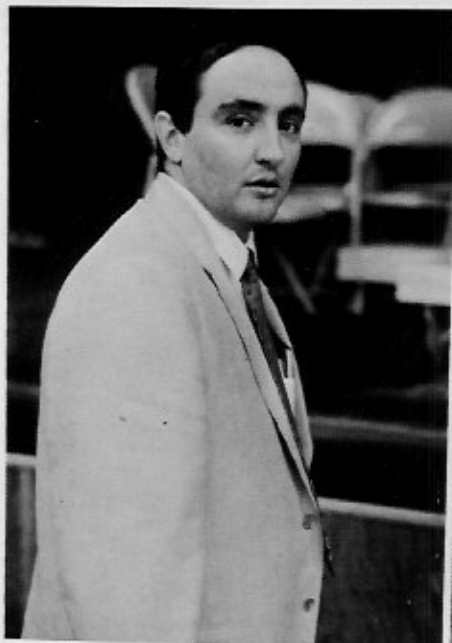
Junior Advisor, Chemistry,
Physics, Physical Science,
Art, Religion III

*Dear Tony,
Very fine work this
year. Keep it up. Have
a good summer.
God bless you
Sister M. Alphonsa*

*Tony,
Many thanks for
all your work and
kindness. Have
a swell summer.
Sister Christine Marie*

Mr. Eugene Boyle
Head Coach

Guidance Counselor,
Algebra I, II, Advanced
Math, Religion II



Mrs. Marvin Powell

Sophomore Advisor,
English III, IV,
Latin I, Creative
Writing

Sister M. Avellina

Freshman Advisor,
Latin I, Geography,
Reading, Religion I



Sister Joan Quinn

Junior Advisor, World
History, American History,
American Government,
Religion III



BUFFOONERISMS: "Off on a tangent" or "Hit a high medium"

*Keep up the good
work. Be a good
Juniat!
Sister Joan*





Not NOW, Sister!

*Ann Perry
Mabel
Sister M. Mariel*



Sister M. Mariel

Freshman Advisor
Typing I, II, Religion I,
English I



Sister M. Charisse, L.N.M.

Sister M. Charisse

Senior Advisor, Typing I,
II, Religion IV,
Librarian



Mr. John Millheisler

Mechanical Drawing,
Bookkeeping, Business
Math

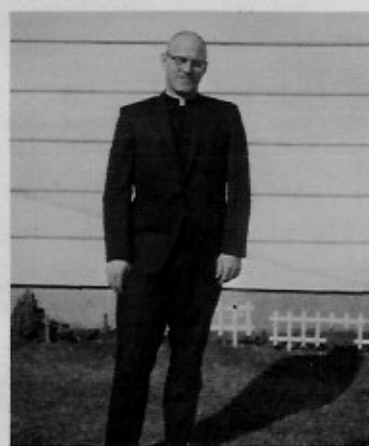


Mrs. Anne Miles

Physical Education, Drill
Team Advisor, PEMM Advisor,
Pep Club Advisor

Sister M. Aloysia and
Sister M. St. Teresa

Music Instructors



Father Morgan

Mrs. Westerberg

Secretary



Father Beckman

Fathers: Tobin, Jennings, Mulligan, and
Peterson.

Mr. Garvey

Custodian





Physics is "Phun".

Juniors strike pose.



Artists at work





Students



Seniors

Officers: M. J. Huetter, Rep., Mimi Andersen, Treas., Paul Beaudry, V. Pres., Lori Bowser, Sec., Jane McFarland, Pres., (not shown, Terry Johnston, Rep.)

MARLENE ANDERSEN

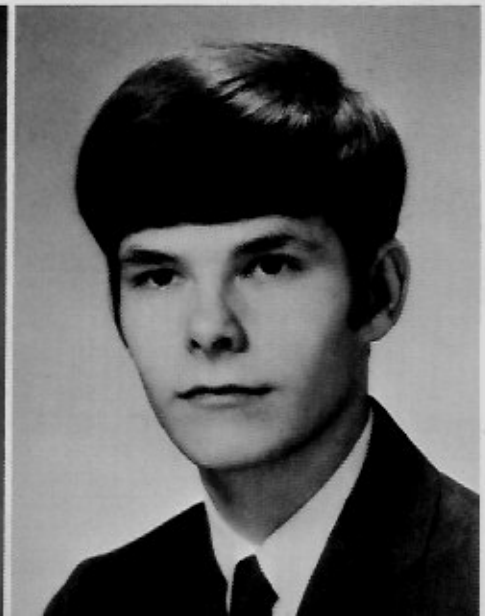
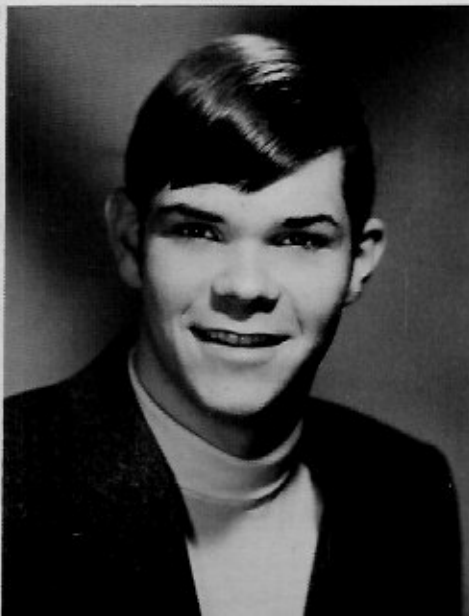
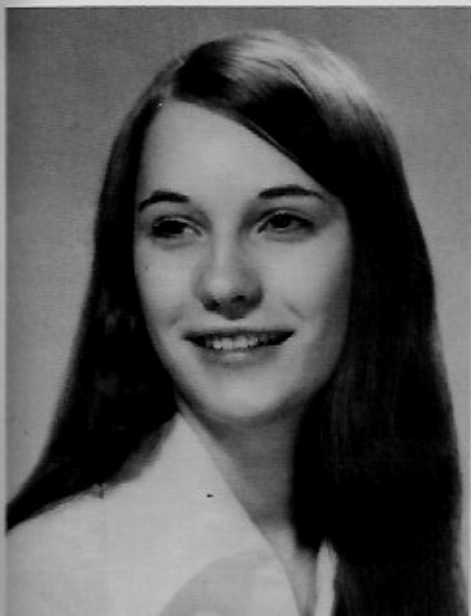
Pep Club 2, 3, 4; Drill Team 2; Glee Club 1, 2, 3, 4; Press Club 2, 3, 4; Laurel Staff 4; Le Coeur Staff 4; Girls' State Alt. 3; Junior Miss Pageant 4; Junior Prom Princess 3; Homecoming Queen 4; Class Officer 2, 3, 4; Cheerleader Alt. 3; DAR Good Citizenship Award 4; Stage Crew 3, 4.

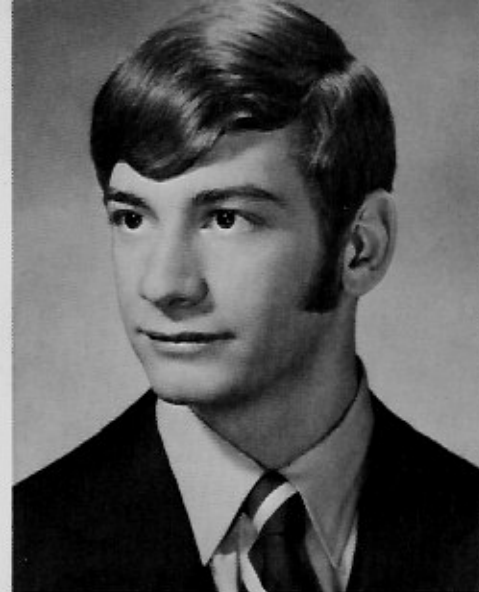
DALE ANDREWS

Track 1; Glee Club 2; 70's Club 1, 2.

JOHN ARNEY

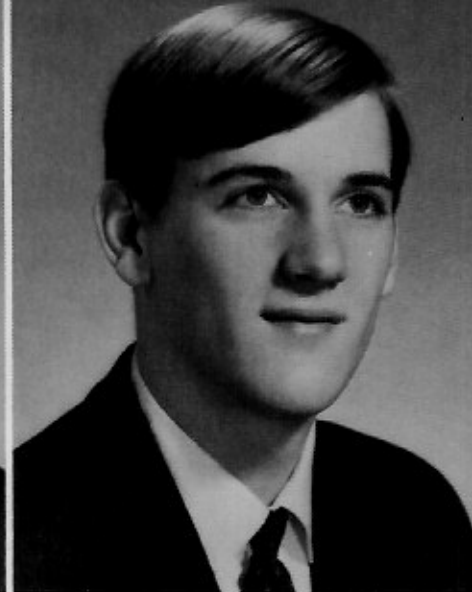
Basketball 1; Football 1, 2, 3, 4; Track 1, 2, 3, 4; Lettermen's Club 4; Press Club 3, 4; Le Coeur Staff 4; Ski Club 4; Debate 2; Pi Omicron 2, 3, 4; 70's Club 1, 2; Team of the Year 2, 4.





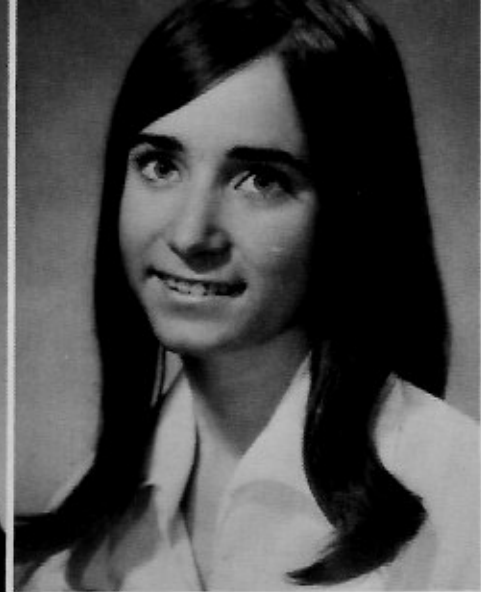
PAUL BEAUDRY-transfer 3
Mead High School
Spokane, Washington

Football 3, 4; Lettermen's Club 4; Class Officer 4; Team of the Year 4.



JOHN BOLLER

Basketball 1, 2, 3, 4; Football 1, 2, 3, 4;
Track 1, 2, 3, 4; Lettermen's Club 3, 4; Glee Club 1; 70's Club 1, 2; Team of the Year 2, 4; All League 4.



LORRAINE BOWSER

PEMM 1; Pep Club 1, 2, 3, 4; Drill Team 1, 3, 4; Glee Club 1, 2, 3, 4; Girls' Chorus 4; Press Club 2, 3, 4; Laurel Staff 3, 4; Le Coeur Staff 4; Student Council 4; Junior Prom Princess 3; Class Officer 4.

LYNETTE BROWN

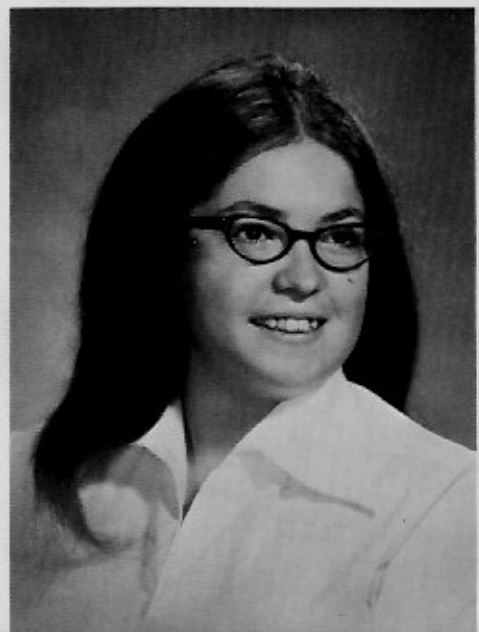
PEMM 3, 4; Girls' Track 2, 3, 4; Pep Club 2, 3, 4; Pep Band 1; Glee Club 1, 2, 3, 4; Press Club 2, 3, 4; Laurel Staff 4; Le Coeur Staff 4; Toastmasters 2; Debate 3, 4; Pi Omicron 2.

LYNDA CARTER

PEMM 1, 2, 3, 4; Pep Club 1, 2, 3, 4; Drill Team 2, 3, 4; Glee Club 1, 2, 3, 4; Girls' Chorus 4; Le Coeur Staff 4; Co-Editor 4; Nat'l Honor Society 2, 3, 4.

TERESA CAYKO-transfer 1
Coeur d'Alene Junior High
Coeur d'Alene, Idaho

Pep Club 1, 2, 3, 4; Glee Club 1, 2, 3, 4; Press Club 3; Laurel Staff 3; Nat'l Honor Society 2, 3, 4; Pi Omicron 2, 3.





CHERYL COLEMAN

PEMM 1, 2, 3, 4; Pres. 4; Girls' Track 2, 3; Pep Club 1, 2, 3, 4; Sodality 2, 3, 4; Student Council 2, 3, 4; Treas. 4; FHA 2, 3; Girls' Volleyball 4.



ROBERT DEY-transfer 2
Sandpoint High School
Sandpoint, Idaho

Pi Omicron 4.



SHERRY FISCUS

PEMM 1, 2; Pep Club 1, 2, 3, 4; Cheerleader 3, 4; Drill Team 1, 2; Glee Club 1, 2, 3, 4; Girls' Chorus 1, 2, 3, 4; Laurel Staff 4; Le Coeur Staff 4; Girls' State Del. 3; Nat'l Honor Society 2, 3, 4; Junior Miss Pageant 4; Miss Congeniality; Debate 2.

JOSEPH FOREDYCE

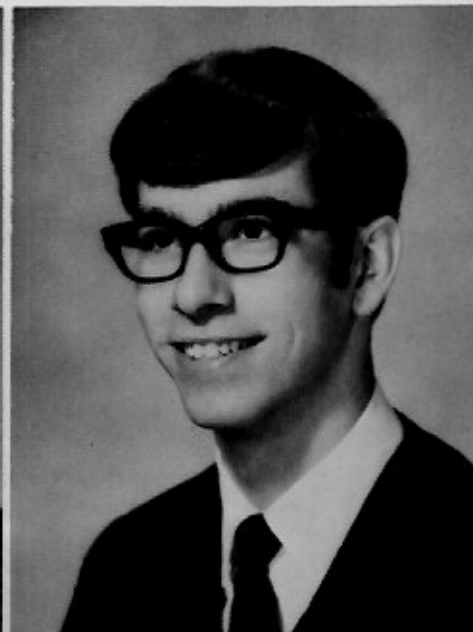
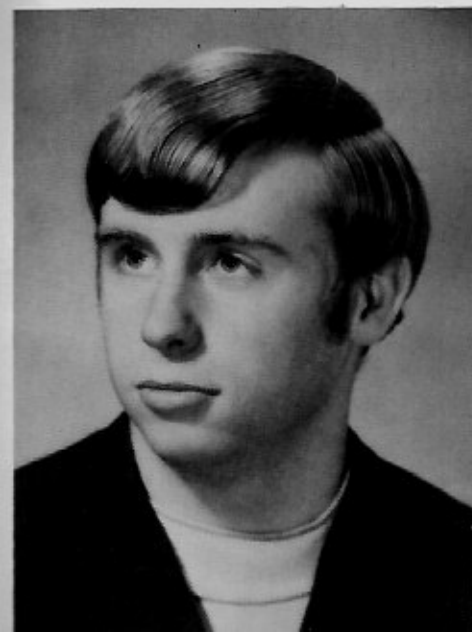
Basketball 1, 2, 3; Manager 4; Football 1, 2, 3, 4; Track 1, 2, 3, 4; Cross Country 1; Lettermen's Club 2, 3, 4; Press Club 2, 3, 4; Boys' State Del. 3; Nat'l Honor Society 2, 3, 4; Pres. 4; Student Council 2, 3, 4; Toastmasters 2; Class Officer 3; Debate 2; 70's Club 1, 2; Pi Omicron 2, 3, 4; Pres. 2; Team of the Year 2, 4; All League 4.

STEPHEN GERGER

Track 1, 2, 3, 4; Football 3; Lettermen's Club 3, 4; Glee Club 1, 2, 3, 4; Le Coeur Staff 4; 70's Club 1, 2.

GERALDINE GILLHOVER-transfer 3
St. Paul High School
Whittier, California

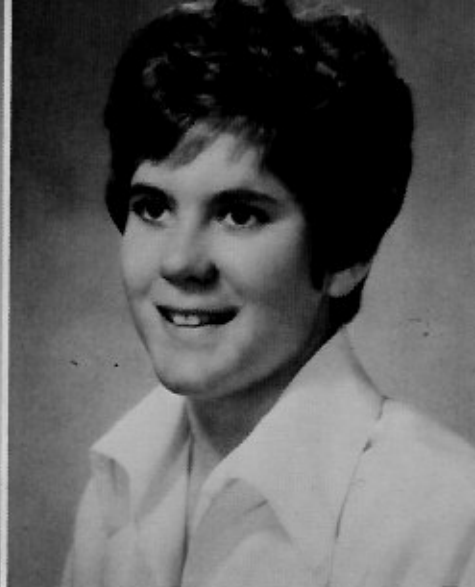
Pep Club 3, 4; Cheerleader 4; Glee Club 3, 4; Press Club 3, 4; Laurel Staff-Asst. Editor 4; Le Coeur Staff-Co-Editor 4; Nat'l Honor Society 4; Student Council 4; Junior Miss Pageant 4; Junior Prom Queen 3; Homecoming Princess.





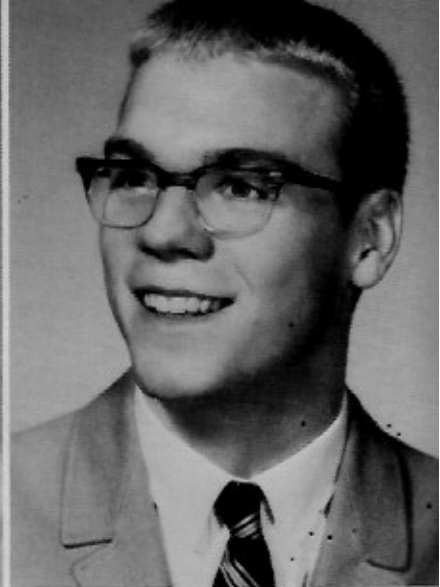
MAUREEN HARTNETT

Pep Club 1, 2, 3, 4; Debate 2; Drill Team 2, 3; Tennis 2, 3; Glee Club 1, 2, 3; Student Council 1; Junior Miss Pageant 4; Le Coeur Staff 4; Ski Club 2, 3, 4; Pres. 4; Press Club 3, 4; Avon Good Grooming Panel 3; Avon Good Grooming Rep. 3; Make-up Crew 3, 4.



MYRA HAWLEY

PEMM 1, 2, 3, 4; Girls' Track 2, 3, 4; Pep Club 1, 2, 3; Pep Band 1; Drill Team 2; Glee Club 1, 2, 3; Le Coeur Staff 4; Tennis Team 2; Debate 2, 3.



M. J. HUETTER

Basketball 1, 2, 3; Football 1, 2, 3, 4; Track 1, 2, 3, 4; Lettermen's Club 2, 3, 4; Press Club 2, 3, 4; Sports Editor 4; Le Coeur Staff 4; Sports Editor 4; Boys' State Del. 3; Nat'l Honor Society 2, 3, 4; Student Council 4; Class Officer 4; All League 4; Team of the Year 2, 4; 70's Club 1, 2; Most Inspirational Football Player 4; Avon Advisory Panel 4.

MICHAEL JESSICK

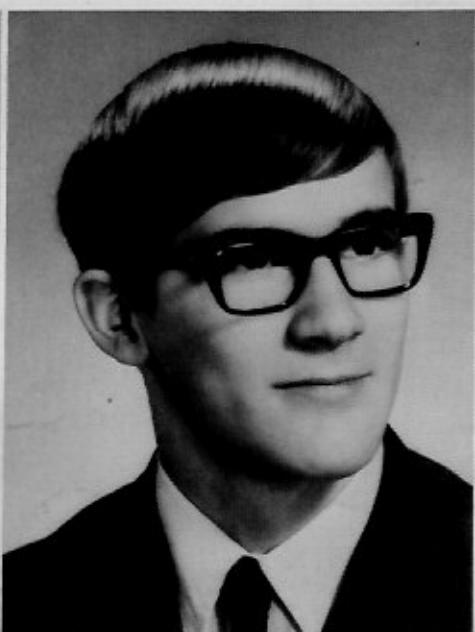
Football Manager 4; Track 1, 2, 3, 4; 70's Club 1, 2.

TERRY JOHNSTON

Basketball 1, 2, 3; Football 1, 3, 4; Manager 2; Track 2, 3; Lettermen's Club 2, 3, 4; Student Council 2, 4; Homecoming King 4; Class Officer 2, 4; Team of the Year 2, 4; 70's Club 1, 2.

GEORGE JOST

Basketball Manager 1, 2, 3, 4; Football 1, 2; Manager 3, 4; Track Manager 1, 2, 3, 4; Lettermen's Club 3, 4; Press Club 2, 3, 4; Laurel Staff 3, 4; Le Coeur Staff 4; Student Council 1, 4; 70's Club 1, 2.





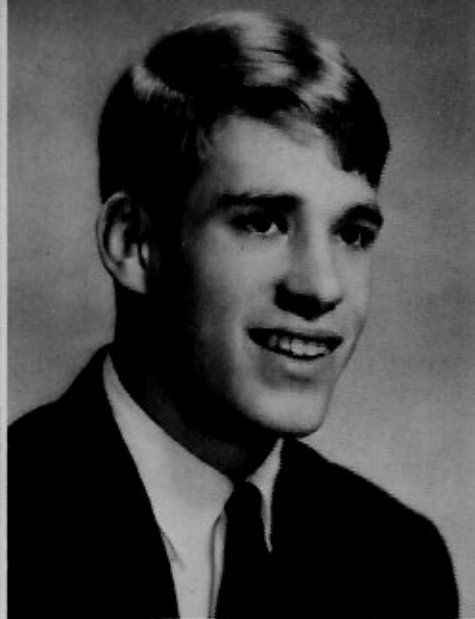
BONNIE KARST

Pep Club 1, 2; Glee Club 1, 2, 3, 4; Sodality 3, 4; FHA 3.



MELANIE KOONTZ

PEMM 1, 2, 3; Girls' Track 3; Pep Club 1, 2, 3, 4; Pep Band 1; Drill Team 1, 2, 3; Glee Club 1, 2, 3, 4; Le Coeur Staff 4; Nat'l Honor Society 2, 3; Student Council 2; Class Officer 2, 3; Debate 2, 3; Tennis 2, 3; Stage Crew 3.



PATRICK KING

Basketball 1, 2, 3, 4; Football 1, 2, 3, 4; Track 1, 2, 3, 4; Lettermen's Club 3, 4; Le Coeur Staff 4; Team of the Year 2, 4; 70's Club 1, 2; Volleyball Champs 3, 4; All League 4.

SIEGFRIED KIRCHNER

Football 3, 4; Track 1, 2, 3, 4; Lettermen's Club 2, 3, 4; Nat'l Honor Society 3, 4; Team of the Year 2, 4.

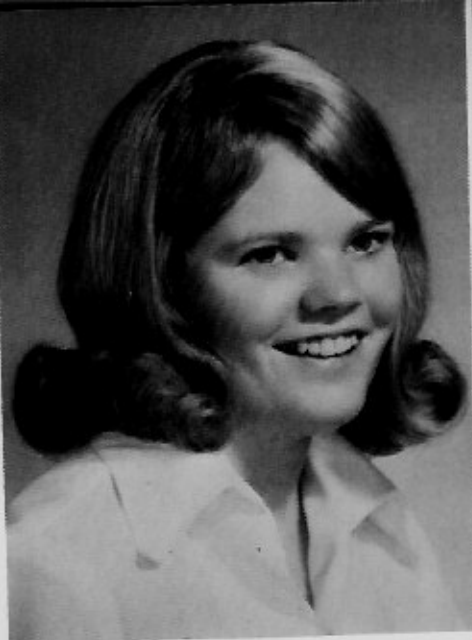
KRISTINA KRYGER

PEMM 1, 2, 4; Pi Omicron 2, 3; Pep Club 1, 2, 3, 4; Debate 2; Press Club 4; Le Coeur Staff 4; Student Council 2, 4; Glee Club 1, 2, 3, 4; Cheerleader 3, 4; Nat'l Honor Society 2, 3, 4; Girls' Chorus 1, 2, 3, 4; Girls' State Del. 3; Tennis 2, 3; Homecoming Princess 4; All-State Chorus 4; Junior Miss Pageant 4; Miss Physical Fitness 4; Leads in Mikado and H. M. S. Pinafore.

BRUCE KOESTER

70's Club 1, 2; Pres. 2.





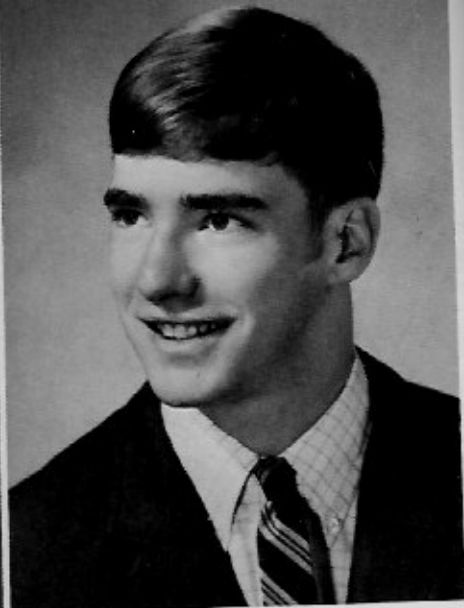
DEBORAH LANE-transfer 3
Coeur d'Alene High School
Coeur d'Alene, Idaho

Pep Club 3, 4; Drill Team 4; Glee Club 4;
Le Coeur Staff 4; Stage Crew 3.



RUDY MARMON

Basketball 1, 2; Manager 3; Football 1, 2, 3,
4; Track 1, 2; Lettermen's Club 3, 4; Glee
Club 1; 70's Club 1, 2; Pi Omicron 2; Team
of the Year 2, 4.



DANIEL MARTIN

Basketball 1, 2, 3, 4; Football 1, 4;
Lettermen's Club 3, 4; 70's Club 1, 2; Team
of the Year 4; Junior Prom Prince 3;
Homecoming Prince 4.

WALTER MATSON

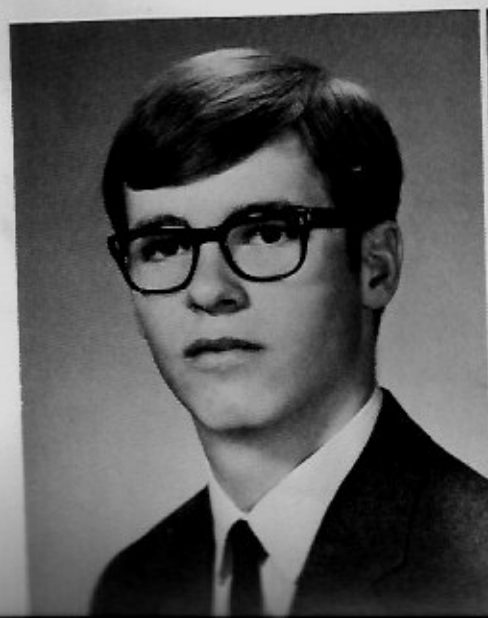
Track 1, 2, 3; Football 1, 2; Pep Band 1;
Glee Club 2, 3, 4; Boys' Chorus 2, 3, 4;
Press Club 2, 3; Boys' State Alt. 3; Nat'l
Honor Society 2, 3, 4; Student Council 2;
70's Club 1, 2; Class Officer 2; Debate 2, 3;
Leads in Mikado and H. M. S. Pinafore.

MAUREEN MCCAMMON

PEMM 1, 2, 3, 4; Pep Band 1; Glee Club 1, 2,
3, 4; Debate 2; Pep Club 1, 2, 3, 4; Student
Council 3, 4; Cheerleader 3, 4; Press Club
2, 3, 4; Nat'l Honor Society 2, 3, 4; Girls'
Track 4; Le Coeur Staff 4; Junior Miss
Pageant 4; Toastmasters 2; Homecoming
Mascot 2; Lead in H. M. S. Pinafore;
National Merit Letter of Commendation 4;
Student Council Secretary 3, 4.

JANE MCFARLAND

PEMM 1, 2, 3, 4; Pep Club 1, 2, 3, 4; Pep
Band 1; Drill Team 1, 2, 3; Leader 3; Glee
Club 1, 2, 3, 4; Girls' Chorus 1, 2, 3, 4; Le
Coeur Staff 4; Girls' State Alt. 3; Student
Council 2, 4; FHA 2, 3; Pres. 3; Class
Officer 2, 4; 2nd Place in District Voice of
Democracy 4; 3rd Place in Elks Youth
Leadership 4; All State Chorus 4; Leads in
Mikado and H. M. S. Pinafore.





JOHN MCFARLAND

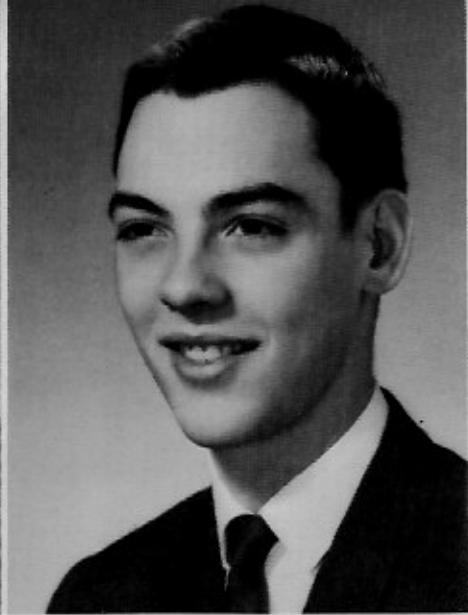
Basketball 1, 2, 3, 4; Football 1, 2, 3, 4;
Track 1, 2, 3, 4; Lettermen's Club 3, 4;
Press Club 2; Le Coeur Staff 4; Home-
coming Prince 4; Class Officer 2; Team of
the Year 2, 4; Lead in H. M. S. Pinafore.



RAYMOND MERRICK-transfer 2

Coeur d'Alene Junior High
Coeur d'Alene, Idaho

Football 3, 4; Lettermen's Club 4; Glee
Club 2, 3; 70's Club 2; Team of the Year 4.



KIRK MILLER

Football 1, 2, 3, 4; Track 1, 2, 3, 4;
Lettermen's Club 4; Ski Club 1, 2, 3, 4; 70's
Club 1, 2; Team of the Year 2, 4; Le Coeur
Staff 4.

ROBERT MOATE

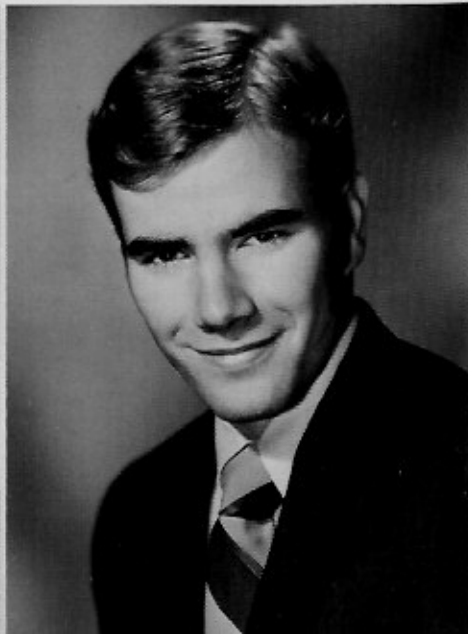
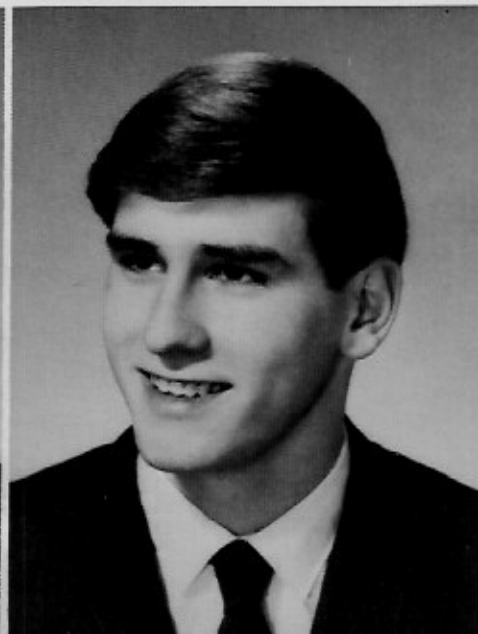
Track 1, 2, 3; Sodality 2, 3, 4; Press Club
2, 3, 4; Le Coeur Staff 4; 70's Club 1, 2; Pi
Omicron 4.

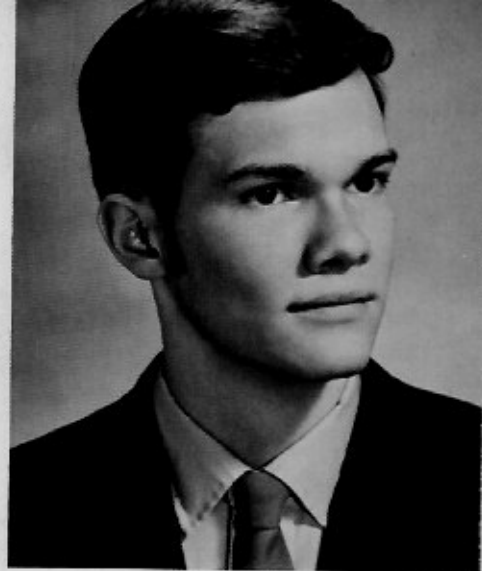
TERRY MOATE

Football 1, 2, 4; Track 1, 2, 4; Lettermen's
Club 4; Glee Club 3; Squires 1; 70's Club
1, 2; Team of the Year 2, 4.

RANDY PRINGLE

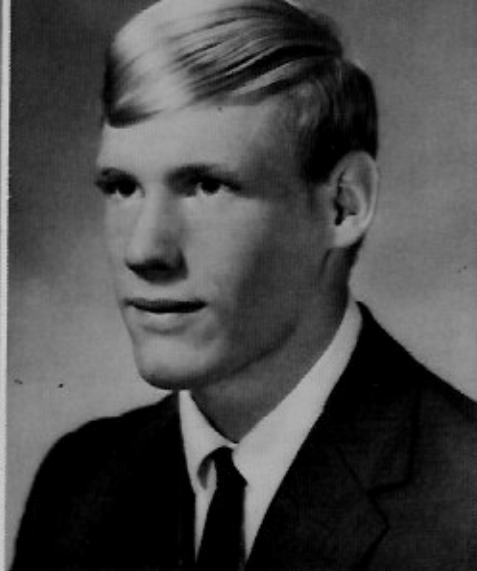
70's Club 1, 2; Junior Prom King 3.





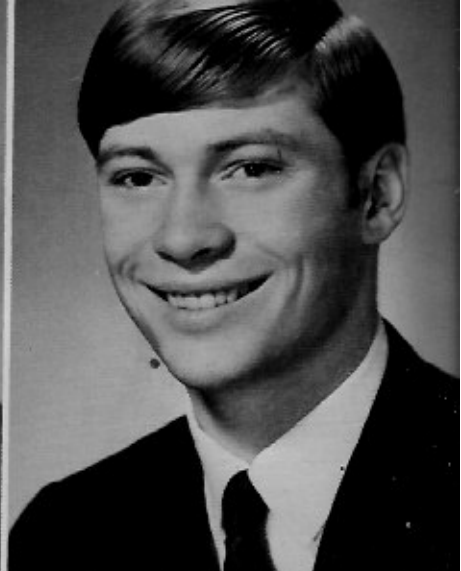
RONALD PUF AHL

Squires 1, 2; Press Club 3, 4; Laurel Staff 3, 4; Le Coeur Staff 4; 70's Club 1, 2; Avon Panel 4.



DENNIS PURDY

Basketball 1, 2, 3; Track 1, 2; 70's Club 1, 2; Team of the Year 2, 4; Football 1, 2, 3, 4; Lettermen's Club 3, 4; Volleyball Champs 3, 4; Honorable mention-all-league 4.



ROBERT RIGGS

Basketball 1, 2, 3; Football 1, 2, 3, 4; Track 1, 2, 3, 4; Lettermen's Club 1, 2, 3, 4; Pep Band 1; Glee Club 2, 4; Boys' Chorus 4; Press Club 2, 3; Boys' State Alt. 3; Student Council 3, 4; Pres. 4; Junior Prom Prince 3; Ski Club 4; Team of the Year 2, 4; Lead in H. M. S. Pinafore.

PATRICIA RIPLINGER

PEMM 1, 2, 3, 4; Pep Band 1; Glee Club 1, 2, 3, 4; Debate 2; Pi Omicron 2; Nat'l Honor Society 2, 3, 4; Le Coeur Staff 4; Student Council 4; Pep Club 1, 2, 3, 4; Pres. 4; Girls' Chorus 4; Press Club 3, 4.

CLARICE ROBERTSON

PEMM 1, 2; Pep Club 1, 2, 3, 4; Drill Team 1, 2; Ski Club 1, 2; Glee Club 1, 2, 3, 4; Girls' Chorus 1, 2, 3, 4; Le Coeur Staff 4.

DENNIS SMITH

70's Club 1, 2; Track 3.





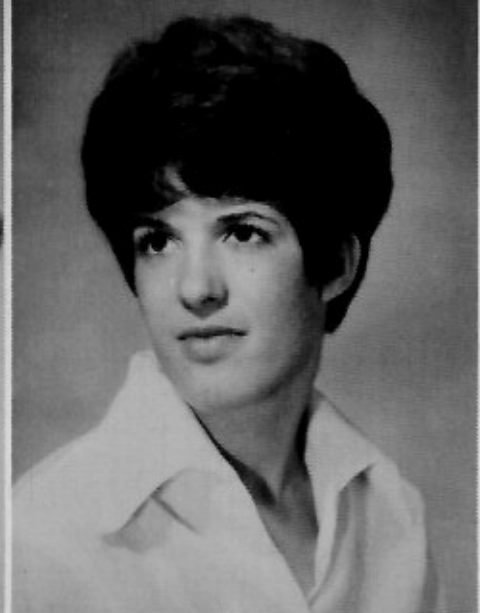
MARIE SNEED

Pep Club 4; Press Club 3, 4; Le Coeur Staff 4; FHA 2.



TERRINE SPINAZZA

PEMM 4; Pep Club 2, 3, 4; Pep Band 1; Glee Club 1, 2, 3, 4; Le Coeur Staff 4; Class Officer 1; Stage Crew 3, 4.



JULIE VALENTE

Pep Band 1; Glee Club 1, 2, 3, 4; Le Coeur Staff 4; FHA 3.

CLARA WALLACE

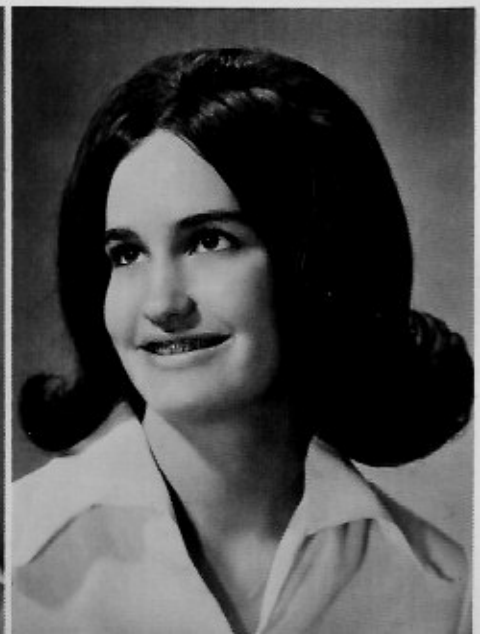
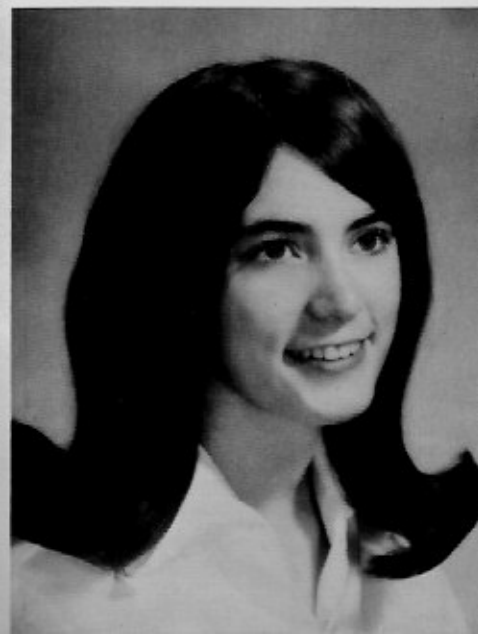
PEMM 4; Girls' Track 2, 3, 4; Pep Club 1, 2, 3, 4; Drill Team 3; Glee Club 1, 2, 3, 4; Sodality 2, 3; Le Coeur Staff 4.

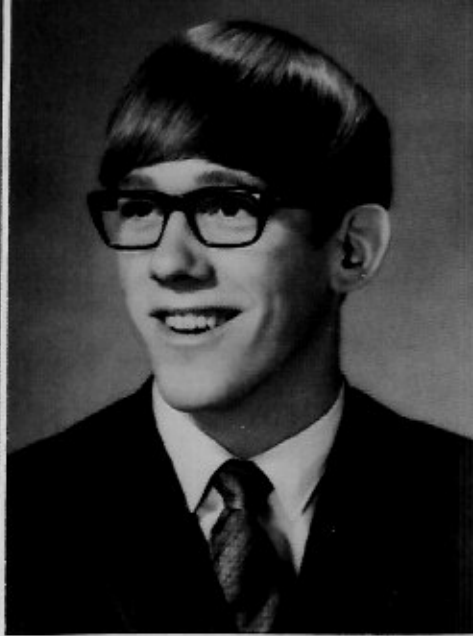
BEVERLY WALSON

Glee Club 3, 4; Le Coeur Staff 4.

JOETTE WARDIAN

Pep Club 1, 2, 3; Drill Team 2, 3, 4; Leader 4; Glee Club 1, 2, 3, 4; Sodality 1, 2, 3, 4; Pres. 4; Pi Omicron 1, 2, 3; Nat'l Honor Society 2, 3, 4; Toastmasters 2; Religion Award 2.





ART WEBB-transfer 2
Huntington Beach High School
Huntington Beach, California

ROBERT WEBER

Basketball 1; Football 1, 2, 3; Track 1, 2, 3;
Nat'l Honor Society 2; Student Council 3;
70's Club 1, 2.

CAROL WETMUR

Pep Club 1, 2.

Basketball 2, 3, 4; Football 2, 3, 4; Track 2,
3, 4; Lettermen's Club 3, 4; Glee Club 2;
70's Club 2; Team of the Year 2, 4.

"The Undefeated"



"The Big Five"



NMQT--Exedrin Headache No. 70.





HSW future leader, Jane McFarland placed third in Elk's Leadership Contest.

“Good Job!”



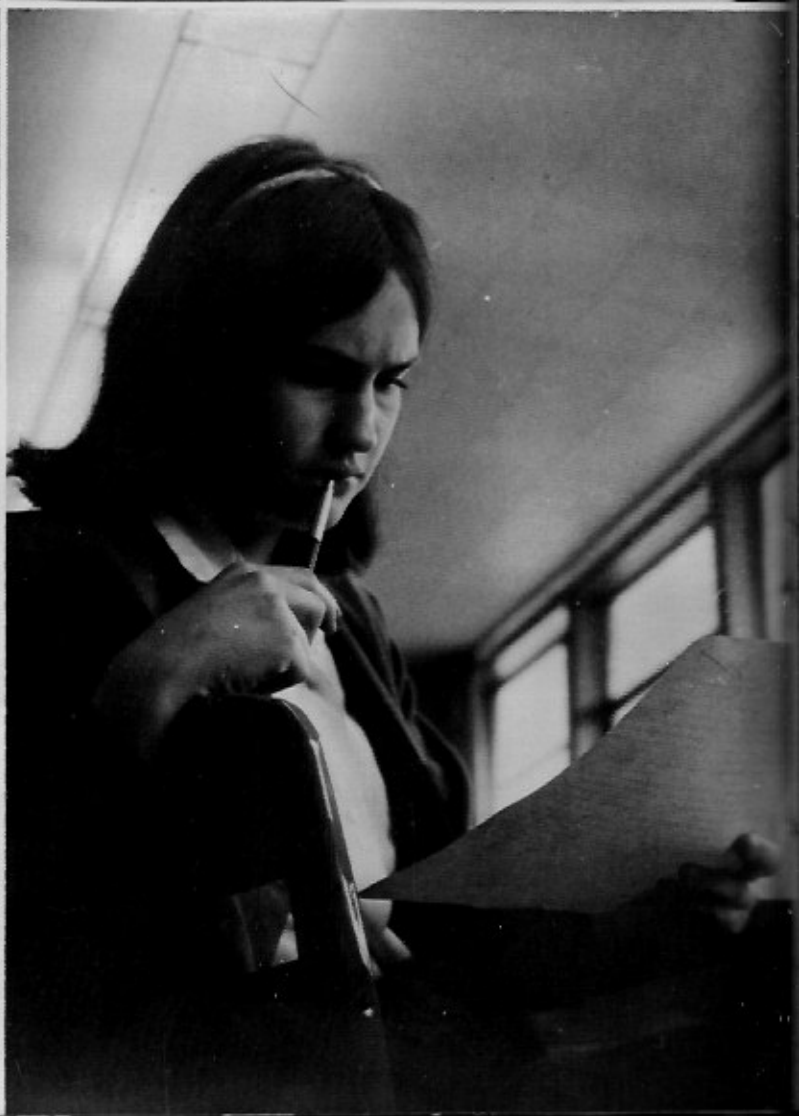
The Most Inspirational and Most Valuable players.

Wait 'til Betty Crocker tries this!



You've come a long way, Babies.







Juniors

Officers: Dave Jessick, Rep., Joan Harrington, Pres.,
Lonnie Brown, V. Pres., Brad Novak, Rep., Tim
Waters, Sec., (not shown, Carolee Kuka, Treas.)



Marlis Andersen
Michael Benbennick
William Boughton
Dale Broadsword
Douglas Brown



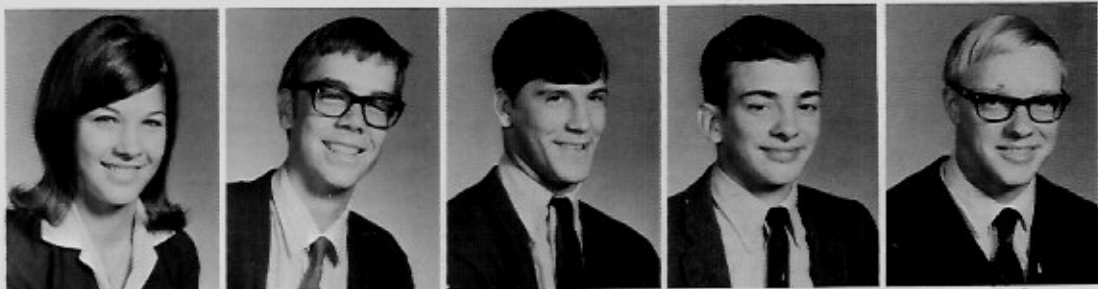
Lonnie Brown
Phyllis Brueggeman
Robert Brueggeman
Raymond Buvel
Michael Cieryca

Photo
Not
Available



Sandra Georgius
Sheila Gerger
Carl Hammons
Kathy Hamrick
Joan Harrington

Janet Hofmeister
 Bruce Huetter
 Scott Hurrell
 Daniel Jacobson
 Lawrence Jaeger



Dave Jessick
 Michael Jost
 Ronnie Kienbaum
 Manfred Kirchner
 Court Koep



Cheryl Komosinski
 Carolee Kuka
 Robert Lane
 Jeff Lenz
 Eileen Lovell



Debra Lyons
 Maureen MacDonald
 Cathy McCammon
 Candy McPoland
 Thomas Mihelich



Randy Moate
 Christine Moyles
 Bradley Novak
 Steven Palmer
 Richard Peplinski



Lauretta Peters
 Sherrill Peterson
 Charlie Picken
 Kevin Roche
 Shanna Romans





Jim Rosenlund
Cheryl Schmidt



Patricia Shively
Julie Spinazza
David Stockwell
Linda Stoeklen
James Valente



Joseph Wachsmuth
Robert Wachter
Bernadine Walson
Timothy Waters
Steve Weber

*Honest
Bill*

Sophomores



Officers: Mark Fromm, Rep., Lynn Wardian, V. Pres., Ken Sands, Pres., Jon Matthews, Sec., Bill Swank, Treas., Ron Reed, Rep.

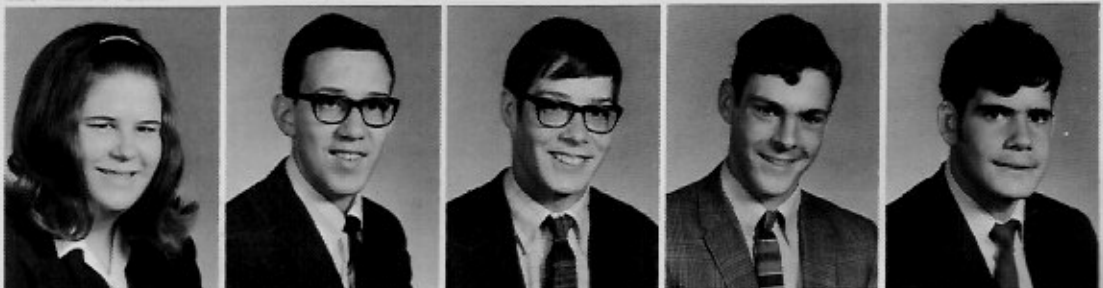
Bonnie Arnold
Kim Bartel
Chris Benbennick
Carol Bosanko
Kent Brooten



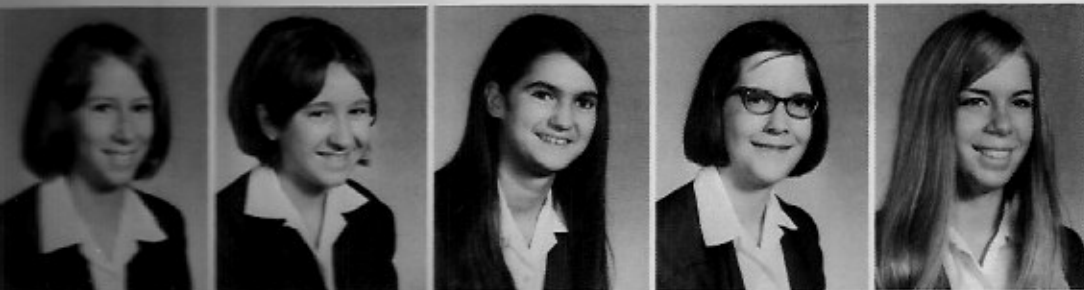
Donna Brueggeman
Debra Carter
Deborah Capual
Timothy Cline
Gary Cook



Jan Daugharty
Timothy Dolan
Randy Fiscus
Raymond Flaherty
Mark Fromm



*Dear Tony
rest your sheep
your hands, on the
legs, etc. to
yourself!
Jim*



Joan Gebhart
Pamela Gerger
Jill Giovanelli
Mary Hagen
Jan Huetter



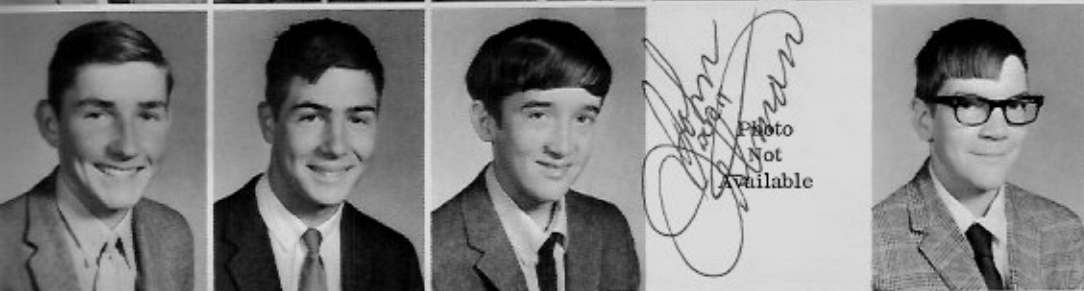
Gayle Jacobs
Donald Jacobs
David Jaeger
Lisa Johnston
Marcia Johnston



Anthony Kapaun
Robert King
Roch Koep
Teresa Lovell
David Lyon



Jon Matthews
George McCormick
Kristine Miller
Karen Millheisler
Kelly Moens



William Moore
Gerald Mudge
Patrick O'Malley
John Ostman
Mark Palmer



Susan Petersen
Susan Peterson
James Picken
Susan Purdy
Mary Ransom

(Tony)
 the pimper
 in my not riding
 chest notes I store all my
 you next year cuz I'm not
 gonna be fake next year but it
 was fun while it lasted. Have
 this summer and don't insult
 too many people. fuck-
 Jill
 1.7.72



Kathy Ratliff
 Ronald Reed
 John Riplinger
 Kenneth Sand
 Linda Stoddard



Thomas Soumas
 Willard Swank
 Susan Torgerson
 Lynn Wardian
 Richard Westerberg





Freshmen

Officers: Steve Spinazza, Rep., Corinne Chadderdon, Sec., Brad Fountain, V. Pres., Chris DeBarbrie, Rep., Paul Montreuil, Treas., Tim Elgee, Pres.



Beverly Andersen
Dennis Bauernfeind
Theresa Benbennick
Daniel Berner
Todd Booth



Connie Bowser
Corinne Chadderdon
Chris DeBarbrie
David Dolan
Tim Elgee



Photo
Not
Available



Bradley Fountain
Valerie Freeman
Jan Gillhoover
Jean Harrington
Monica Hawkins

Charles Hawley
Joann Hebert
Jackyln Holovka
Ray Jessick
James Johnston



Wendy Johnston
Christine Jost
Mary Karst
John Karst
Dana Kindler



Julia Koep
Ruth Koep
Roxanne Kuka
Klaus Kutschia
Diana Lenz



Michael McDowell
James McFarland
Ronald Millheisler
Janie Moate
Paul Montreuil



Kathleen Nelson
Connie Novak
Pamela Novak
Karla Ostman
Suzanne Peters



Barbara Ransom
Kristine Ratliff
Linda Reed
Kathleen Reagan
Rose Schneberger





Philip Sand
Marilyn Shively
Richard Smith
Wayne South
Steve Spinazza



Ricky Spooner
Dan Stockwell
Maxine Stoeklen
Rory Susalla
Donna Torgerson



Patrik Wardian
Lesley Weber
Ronald Wetmur
Rene Wiley
Michael Wilson



Activities



"Ungh!!!"



Volleyball Champs--Once Again!



Officers: Cheryl Coleman, Treas.; Bill Boughton, Vice-Pres.; Bob Riggs, Pres.; Maureen McCammon, Sec.

Student Council



"So help me, if M. J. winks at me one more time. . ."



Press Club



Press Club Staff looks on as K. V. points out

Math and Science Club
"Future Newtons!"



Le Coeur Photographers



Le Coeur Staff





miss, er-uh-errors,
um-errors!



I. H. M. Debaters

Cheryl "Fudd" Schmidt; Cathy "Freckles" McCammon; Lynette "Brownie" Brown; and Carol "Bozo" Bosanko.

hard at work



National Honor Society

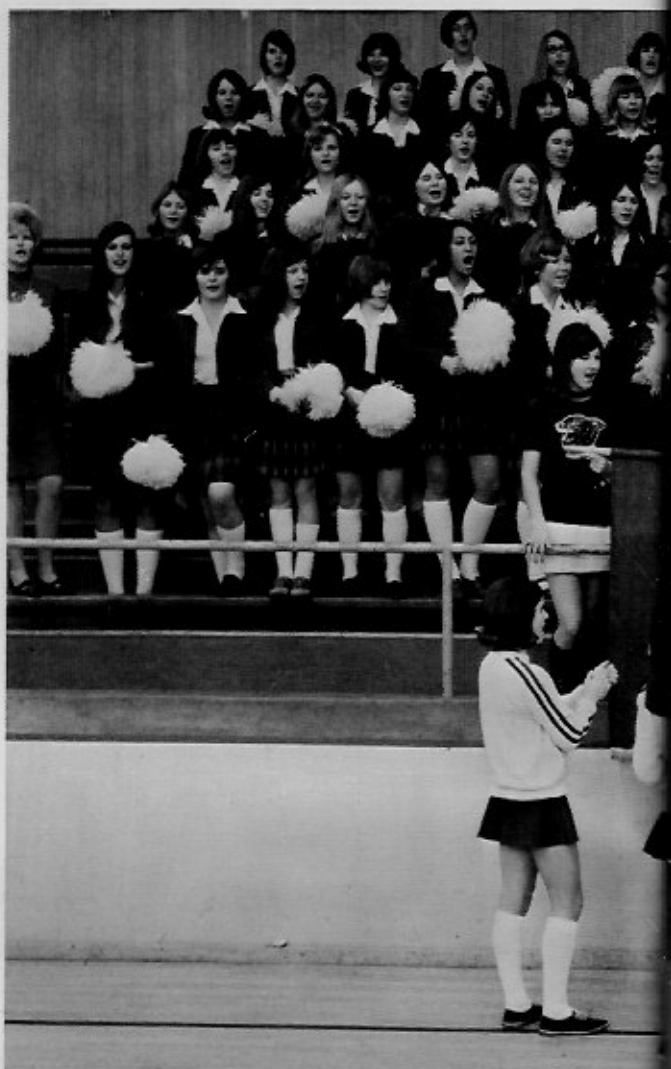
Pep Club



"My place . . . at 12:00?"



"Our Man Murph"
2nd Place--Elk's Leadership



Ski





P.E.M.M.



SA TONY
 TO BAD YOU CAN'T BE
 WITH US ALL THE TIME
 HAD FUN IN GEOMETRY
 AND WE'LL SEE
 YOU NEXT YEAR
 Club
 LARRY
 JAEGER

C.L.C.



Glee



Sr. Alphonsa and "Accompany"
Sherrill Peterson and Kevin Roche



Girls' Special Chorus



Club



Boys' Special Chorus



"...consider yourself part of the furniture"



"Lima Beans" behind the scenes

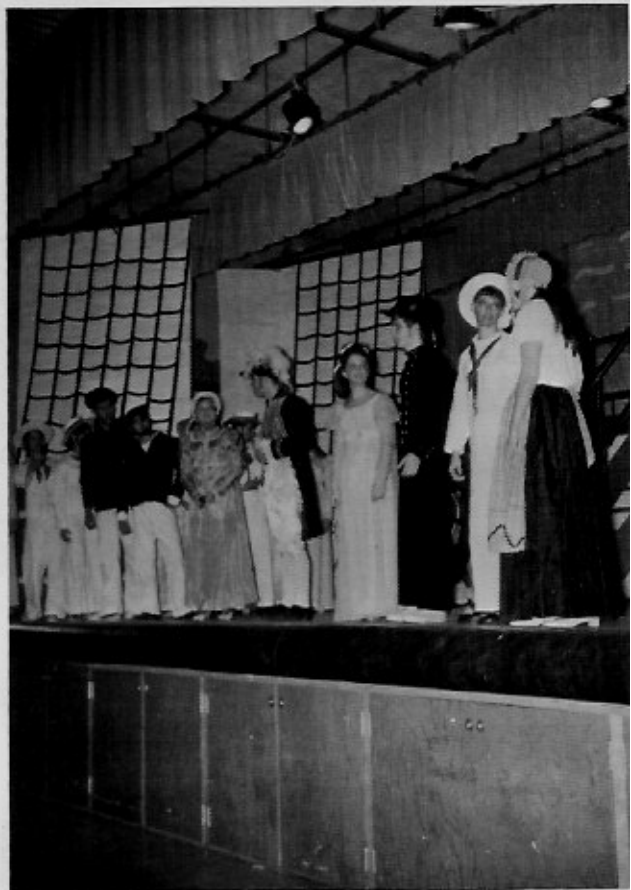
Dear Sister Alphonsa and Mrs. Boughton,

We thank you, sincerely, for all your time,
effort, and unending patience.

The Pinafore cast

P.S. A special thanks to Sister Christine Marie
for the ship.

About that nose, Kris



"Oh bliss! Oh rapture!"

Hurrah! Hurrah! Hurrah!



H.M.S. Pinafore



"Carefully on tiptoe stealing . . ."



"Pretty daughter of mine . . ."

"I am the monarch of the sea."



"A British tar . . ."





Mary "Cupid" Riplinger Captures
the Hearts of All!



"HEY!!!"

"Halftime IHM" Entrances Audience



Marlis, Jan and Linda spur JVs on!!!

We couldn't have done it without you, Annie!



"Tap you feet and go Bo-De-Oh-Dee-Do"





"We're on our way . . ."



"Wait 'til I'm leader!?!"

Yell On!



"Come on---
YELL!!"

". . . to VICTORY!!!"



Lettermen's
Club



Boys' and Girls' Staters look over
horizon into Future!



Junior Miss Contestants.

Sherry Fiscus, Miss Congeniality; Mimi Andersen, Kris Kryger,
Miss Youth Fitness; Geri Gillhoover, Maureen McCammon,
Maureen Hartnett.





Candy
Cane
Merry
Go
Round



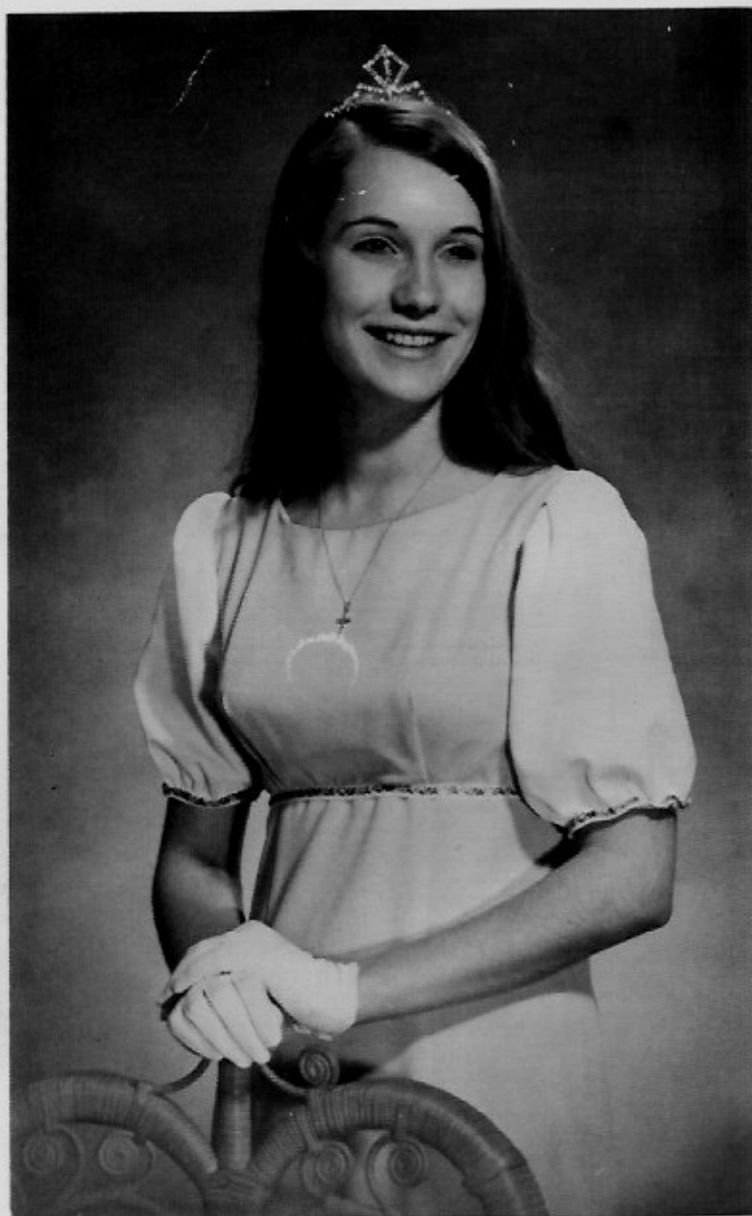
MR. TOUCHDOWN



Mimi Andersen
Homecoming Queen



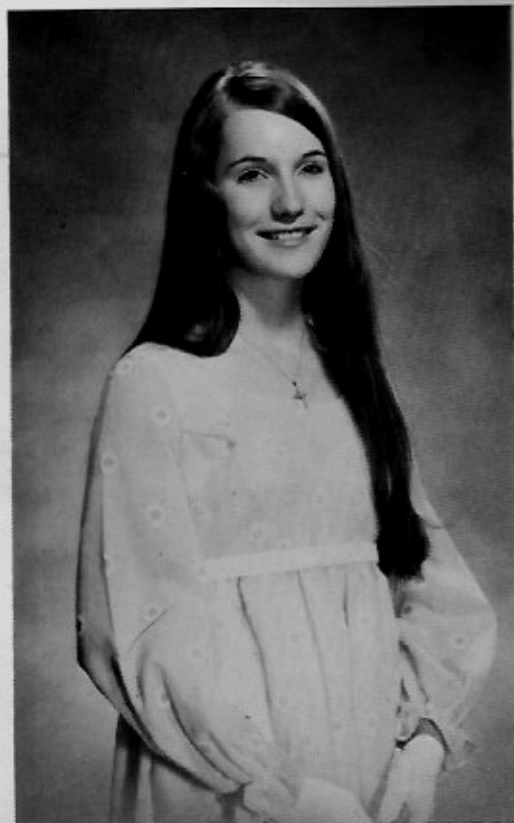
Geri Gill Hoover
1st Princess



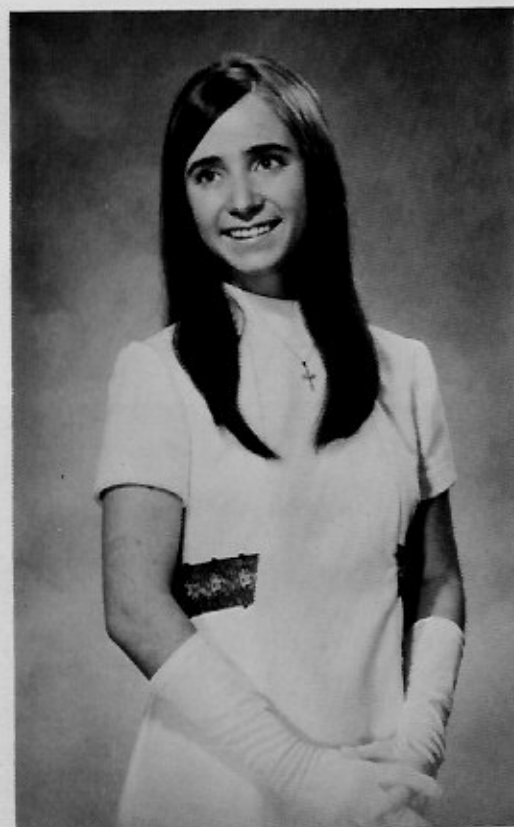
Kris Kryger
2nd Princess



Geri Gillhoover
Junior Prom Queen



Mimi Andersen
1st Princess



Lori Bowser
2nd Princess

ATLANTIS



1967

ATLANTHS





Sports

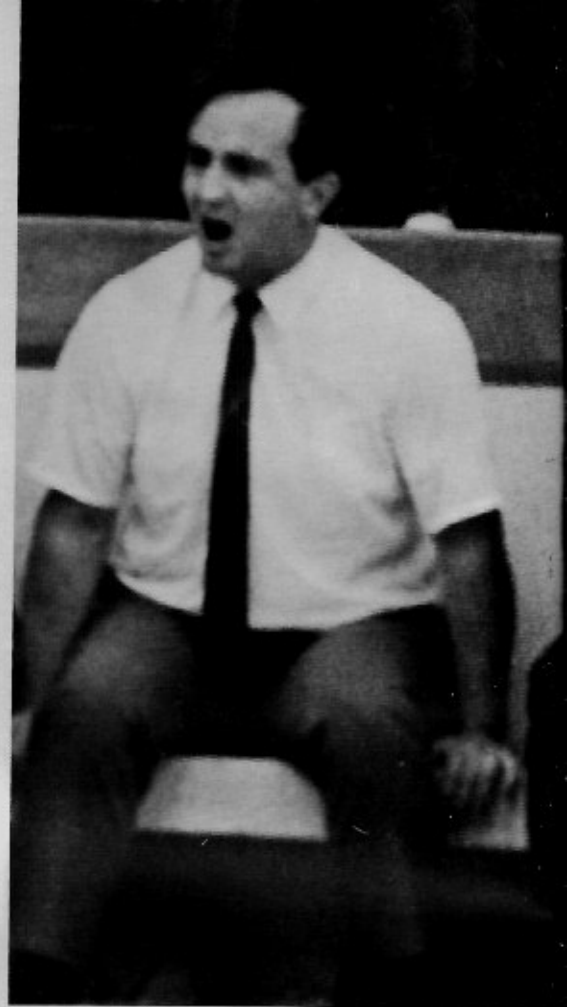


Coach of the Year

Dear Coach,

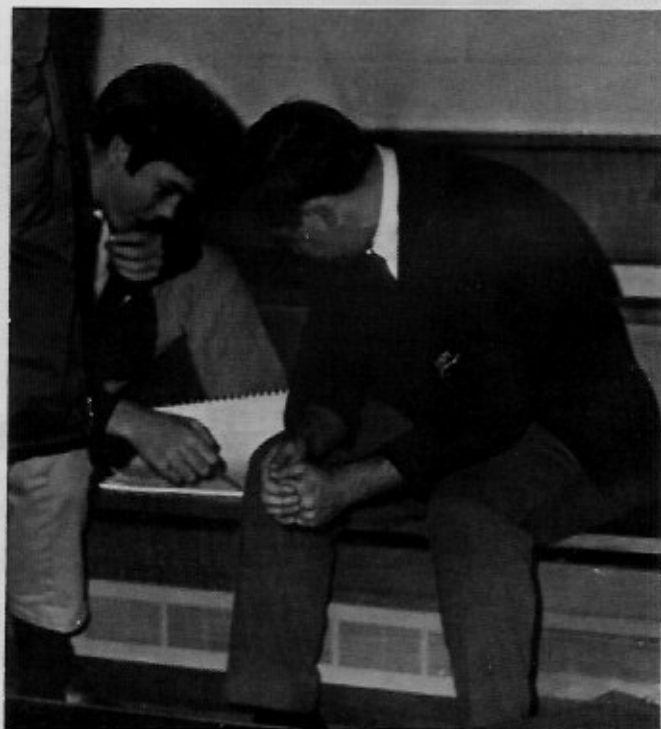
You've always been coach of the year at I. H. M. and we seniors would like to thank you for our last four years. You've united us under a common bond of spirit and you've "taught" us the values of life. You've sacrificed time and energy scouting and planning each game and showed us that victory is the fruit of hard work.

We, the class of '70, feel that any thanks we offer can hardly pay back the debt we owe... but it is the only means of expressing what we feel in our hearts.



A typical pose before a typical technical

"We shot 48% here and held them to 20% the second half."





"Well, we . . ."

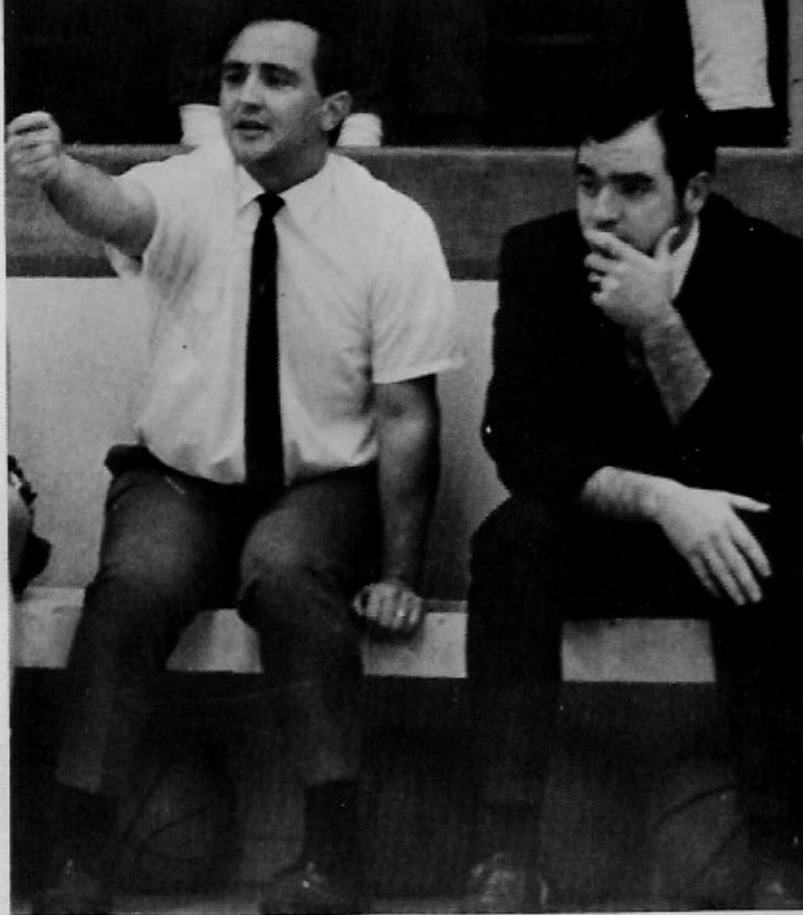
Assistant Coach of the Year

Dear John,

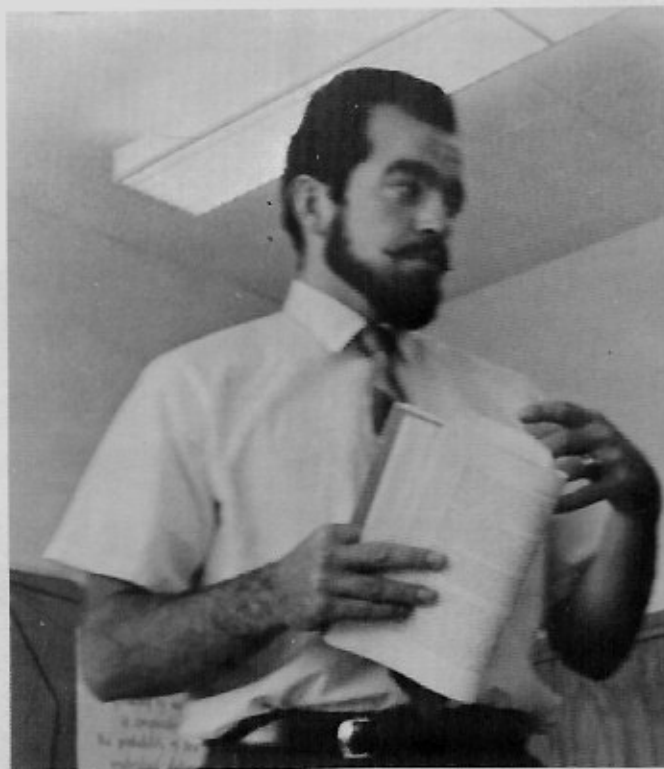
The student body feels that you don't receive the recognition you deserve for your work. You have shown the true I. H. M. spirit through your extensive participation in our activities.

And furthermore, we think you should purchase a Cadillac so you will have a higher social status.

*Toni
Best of luck
to a very fine student
and good person
Mr. DeLong*



Assistant Coach DeLong "learns the ropes" from the "Old Professor."



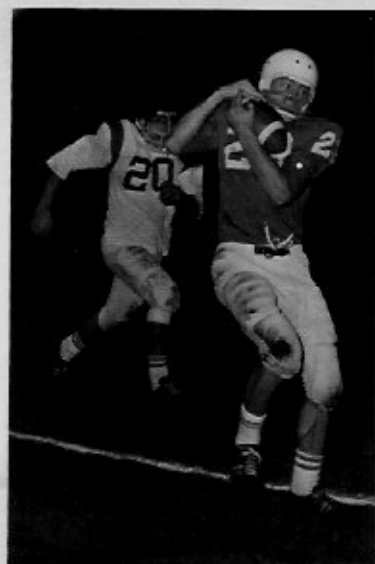


We're Number One!

Post Falls looks on a Panthers plunge over.



Riggs (20) snares in pass in wake of Badger opposition.



Team of



McFarland (11) throws fake on a bewildered Badger.



IHM shows rugged style of defense.



Stockwell shows style that made him All-League halfback.



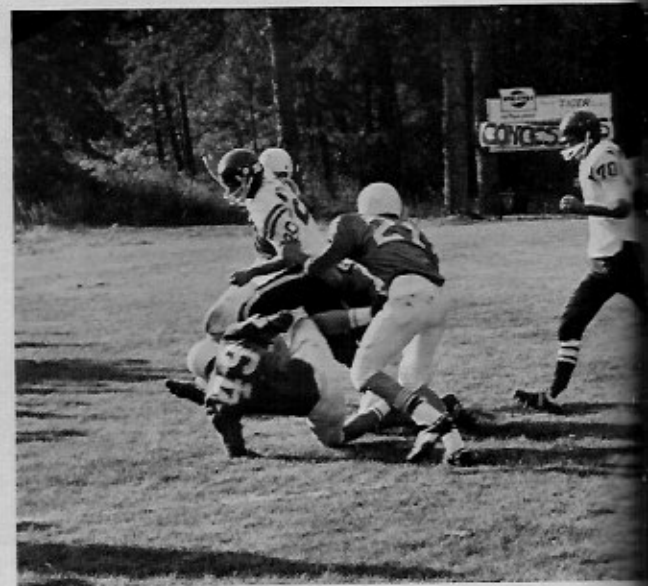
Stockwell (21) gains yards in the wake of King's (88) effective block.

the Year



Gridiron Champs

Let's Go!! Let's Go!!

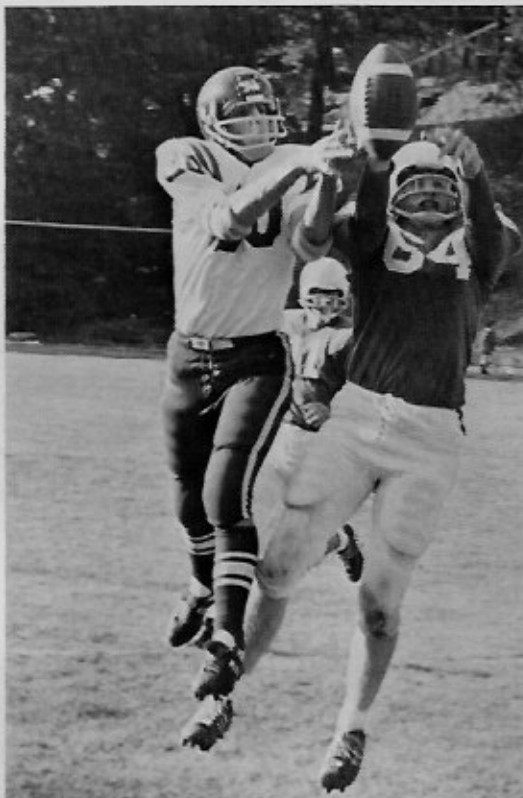


The Mullan Tigers find little room to run as

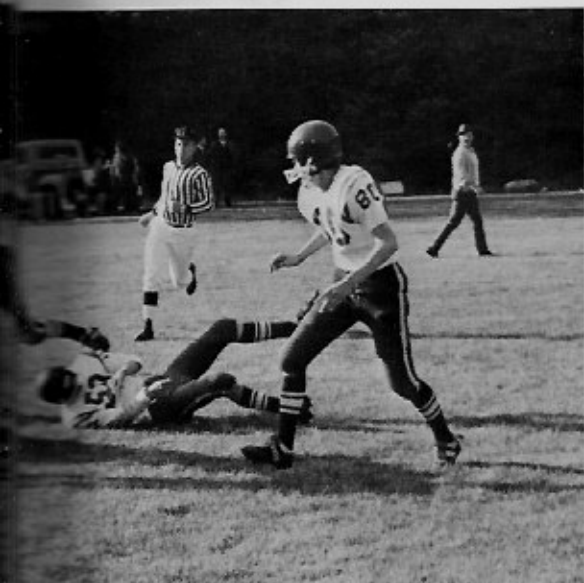
1969 SEASON

IHM	32	Potlatch	6
IHM	20	DeSales	12
IHM	33	St. Maries	2
IHM	26	Lakeland	8
IHM	35	Deer Park	0
IHM	28	Priest River	0
IHM	16	Mullan	0
IHM	26	Bonnors Ferry	12
IHM	20	Post Falls	6

IHM 236 Opponents 46

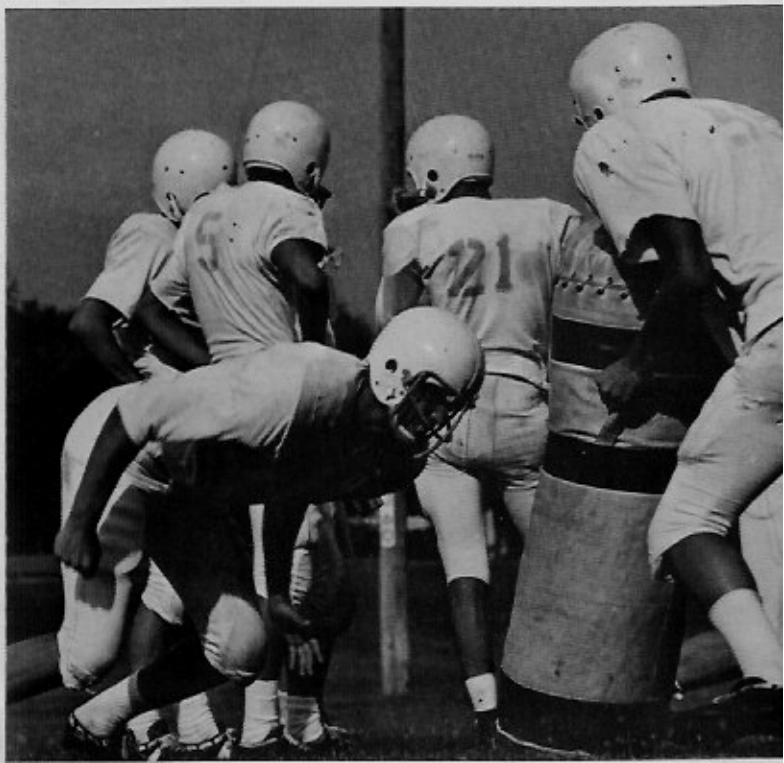


All-League linebacker Joe Foredyce breaks up Mullan pass, a foreshadowing of his Bonnors Ferry feat.



the Panther defense adjusts to end around.

Practice makes perfect.

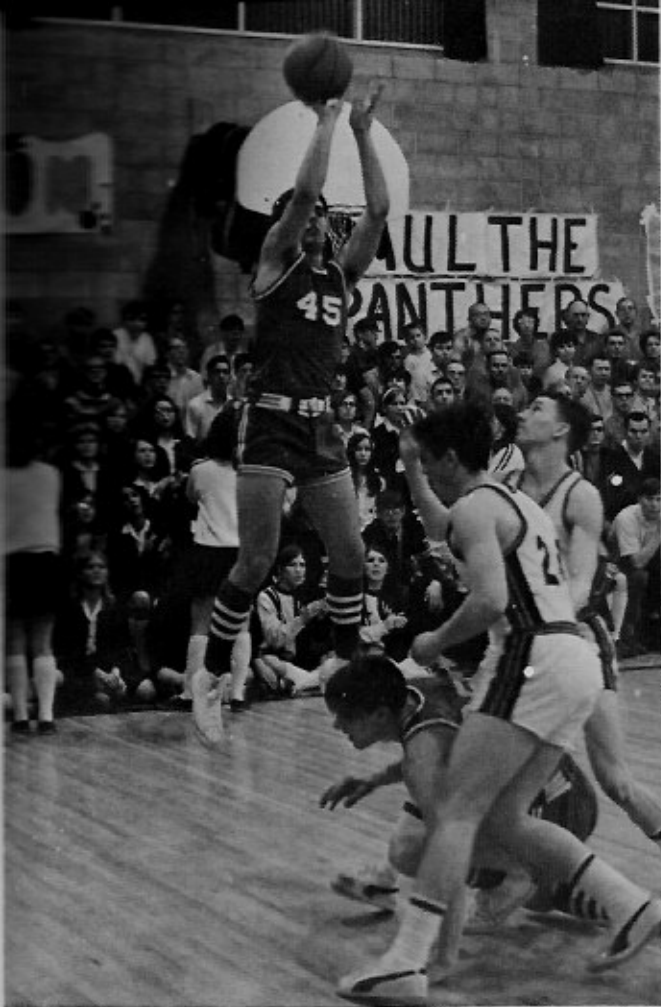


Varsity



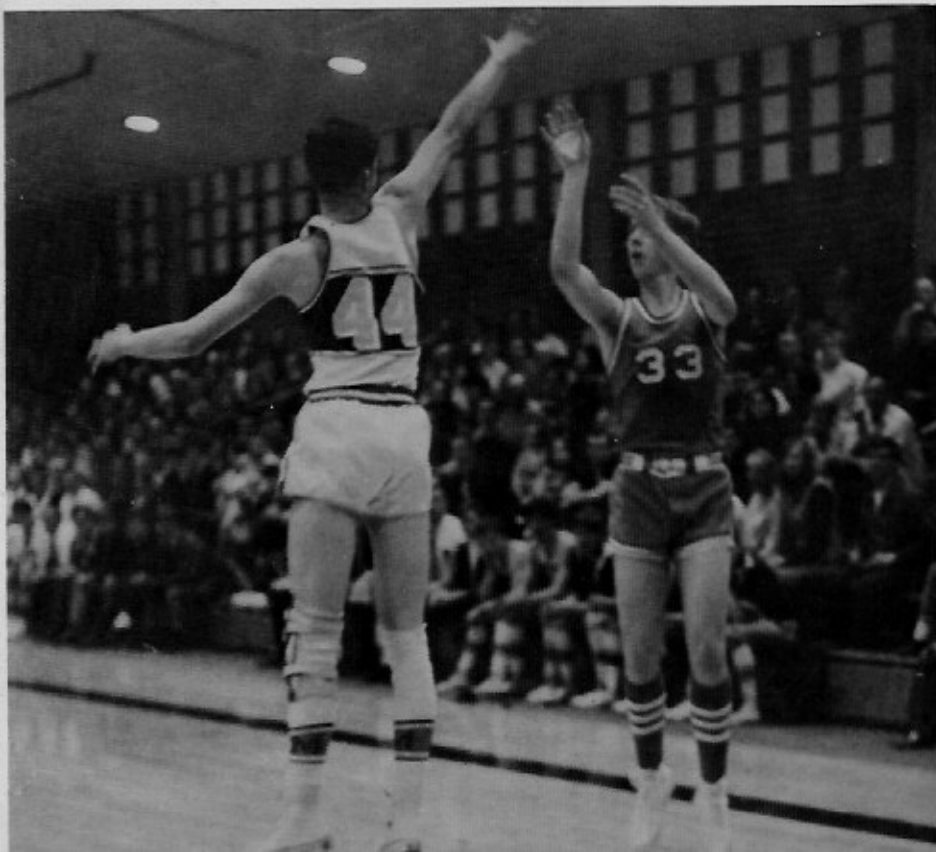
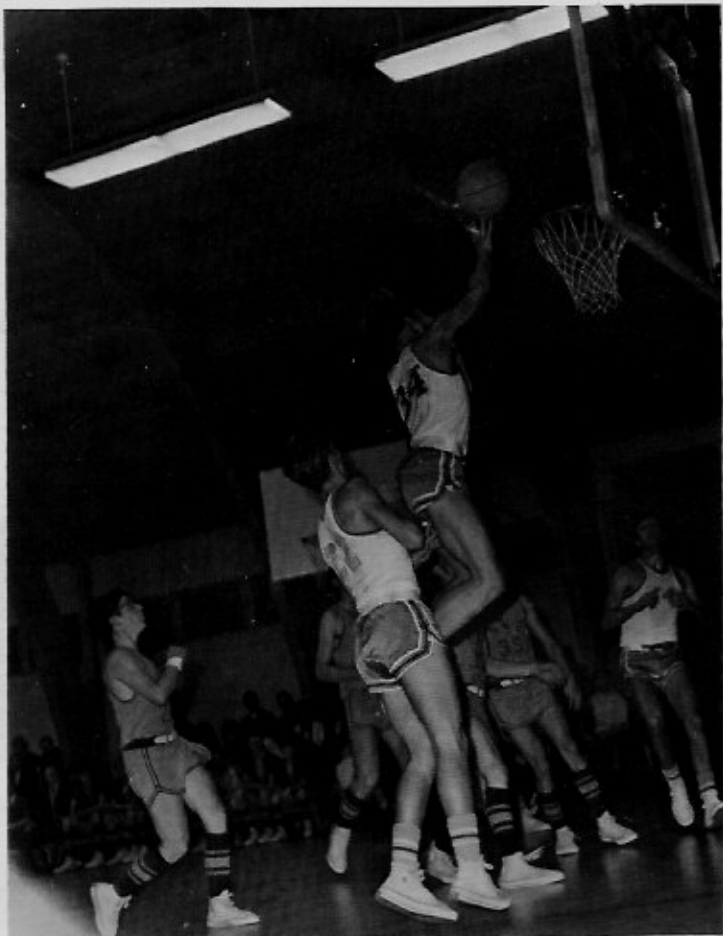
Results of Boller's deft moves are felt by adversary.





Webb "sizzles mesh" with his short jump shot at Post Falls.

King racks up two on tip-in as NWC has no means of defense.

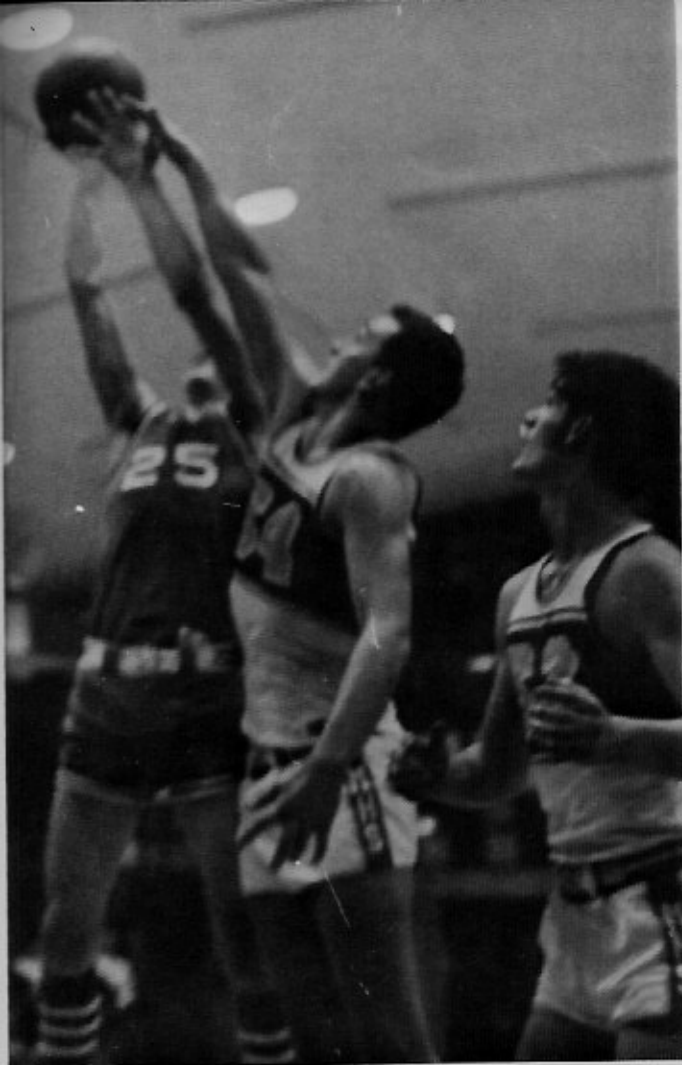


Two-year Varsity veteran, Brad Novak, proved to be a sharpshooter from outside corner.



Panthers strike "serious" pose after Christmas Tourney victory.

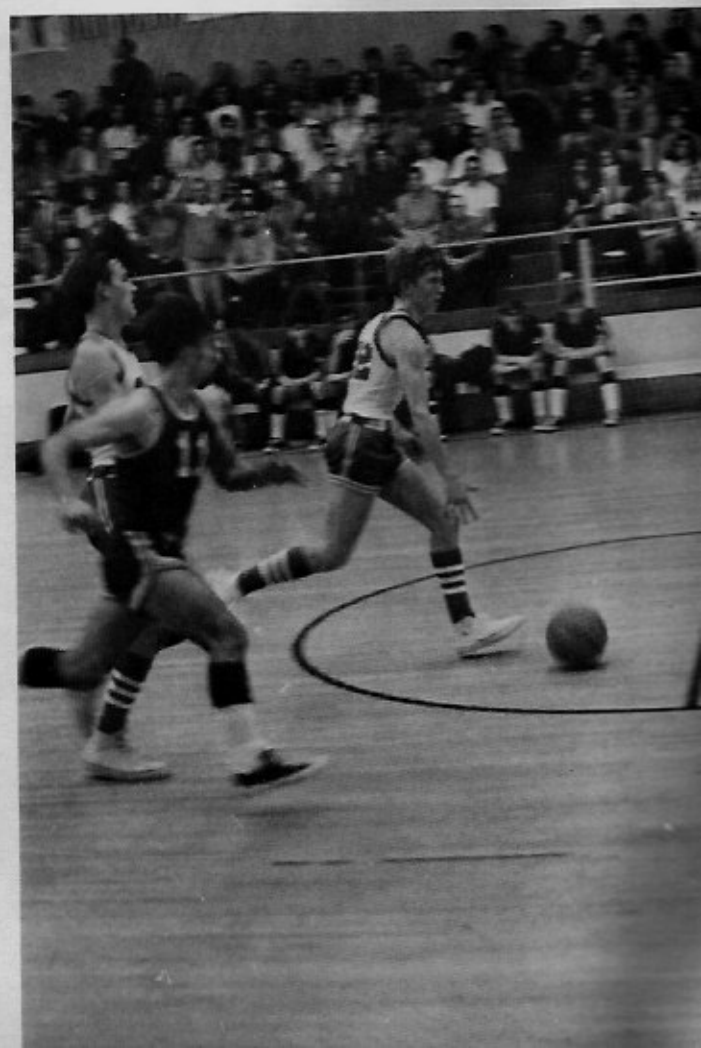
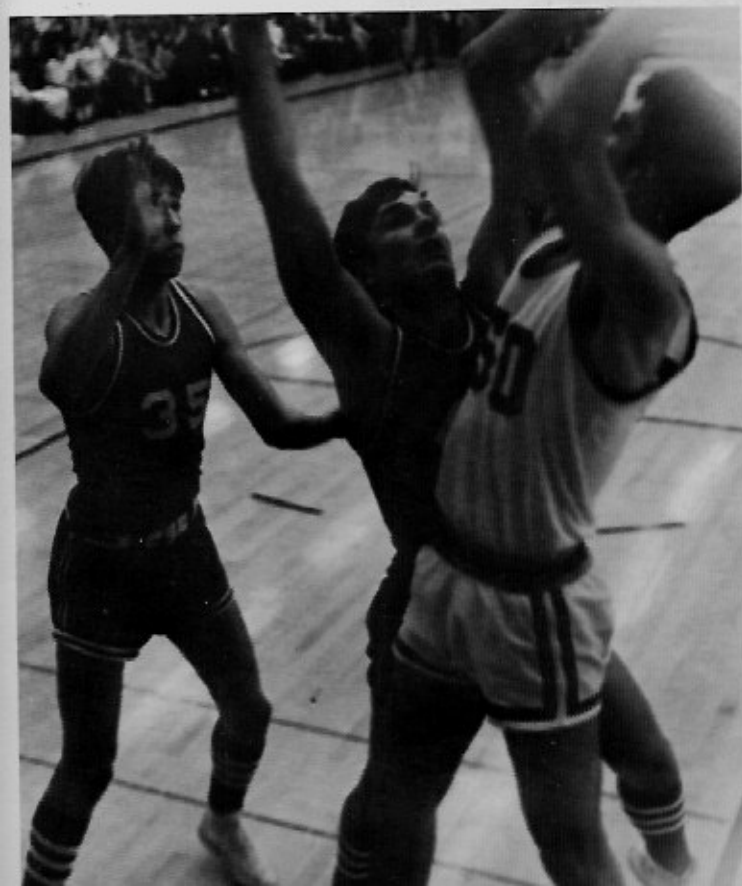
Dec.	6	IHM-73	Kootenai	49
Dec.	12	IHM-51	Mullan	67
Dec.	19	IHM-71	Wallace	85
Dec.	20	IHM-67	Lakeland	69
Dec.	26	IHM-83	Potlatch	52
Dec.	27	IHM-74	Selkirk	52
Jan.	2	IHM-69	St. Maries	46
Jan.	3	IHM-55	Bonnors Ferry	57
Jan.	9	IHM-63	Kootenai	41
Jan.	16	IHM-77	Post Falls	78
Jan.	23	IHM-64	Lakeland	52
Jan.	30	IHM-53	St. Maries	47
Jan.	31	IHM-69	Potlatch	64
Feb.	6	IHM-71	Bonnors Ferry	46
Feb.	7	IHM-59	Priest River	47
Feb.	13	IHM-86	Wallace	64
Feb.	14	IHM-56	Priest River	43
Feb.	20	IHM-79	Post Falls	98
Feb.	21	IHM-78	Mullan	64
Feb.	25	IHM-82	Potlatch	47
Feb.	26	IHM-48	Mullan	35
Feb.	28	IHM-46	Mullan	50
Mar.	2	IHM-71	Mullan	64



IHM contortionist, John Boller, scores two against Mullan.

Stockwell leads deadly fast break.

Panther strongmen wield tough defense.





Junior Varsity



Freshmen





1970 Track Team



"You bet!"

Tourney-Winning Girls' Volleyball

IHM Varsity Gymnasts

"The kid's got talent!"

"Don't laugh, Coach, you'll. . ."



PATRONS

Albertson's	Idaho Forest Industries, Inc.
Alpine Ski Shop	Inland Marine Supply Co.
Athletic Round Table	Interstate Typewriter Co.
Beebe's Pharmacy	IXL Toggery
Brady's Shoe Service	Klotz Drug
Carousel, Inc.	Lake City Lanes
Clark's Jewelry	Lake View Court & Grocery
Coca Cola Bottling Co.	Leader Printing Co.
Coeur d'Alene Auto Parts	Lighthouse Sporting Goods
Commercial Printing	Louis Flower Shop & Greenhouse
Cove Bowl	Lyle's Salon
Diamond National	McFarland Realty
Dingle's Hardware	Mid-Town Variety
English Funeral Chapel	Norge Laundry & Cleaning Village
Evergreen Floral Shop	Northwest Timber Co.
Everson's Jewelry	Pines Bakery
Fashionette Dress Shop	Post Falls Auto Parts
First Federal Savings & Loans	Robideaux Motors
Fossum Paint & Flooring, Inc.	Runge Furniture
Freeman Volkswagon	Stockwell Paints
Gamble Hardware	Texaco Distributors
General Store	Vogue Cleaners
Gibbs Mercantile	Washington Water Power Co.
Gridley Investment Co.	Wilma's Cafe
Hayden Hardware & Plumbing	Wilson's Drug Store
Hayden Lake Barber Shop	Woodcock's Drug Store
Hall Plumbing and Heating	Woolworth's
Home Furniture Mart	Yate's Funeral Home

SPECIAL THANKS

To Dorian Studio for taking the activity pictures and providing many extras for the seniors and the Annual Staff.

To Mr. Terry Schick of the Coeur d'Alene Press for his help in enlarging so many of our snapshots.