







LE COEUR 1968

IHM HIGH SCHOOL

COEUR D'ALENE, IDAHO

Dedication

We, the class of 1968, dedicate
our yearbook to Edmund G. Garvey,
friend of all IHM students.



--You have done
More than any fate
Could have done
To make me happy.

You have done it
Without a touch,
Without a word,
Without a sign.

You have done it
By being yourself.
Perhaps that is what
Being a friend means,
After all.

--Roy Croft

FACULTY





The Most Rev. Sylvester Treinen
Bishop of Boise



Rev. D. Debolt, C.Ss.R.
Pastor



Bro. Raymond Neubert

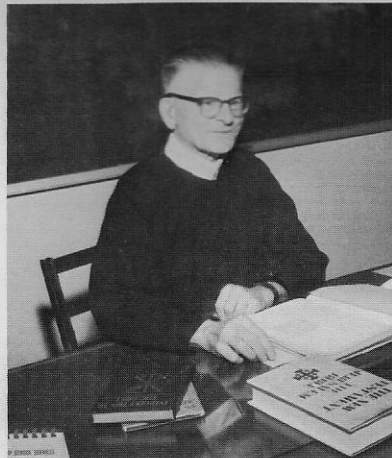
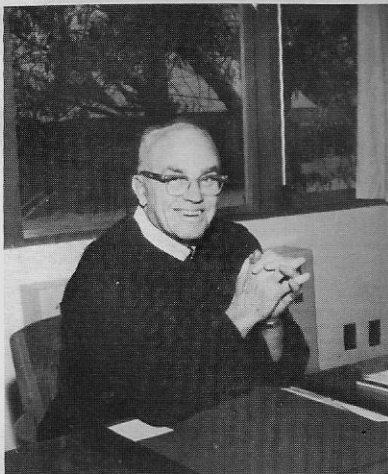


Rev. T. Lafey
Pastor

Rev. E. Jennings, C.Ss.R.

Rev. G. Kathrein, C.Ss.R.

Rev. B. Hopkins, C.Ss.R.





SISTER M. NADINE
PRINCIPAL

SISTER M.
BEATRICE

Senior Advisor
Religion IV
Physics
Chemistry
Biology



SISTER M. PHILIP
NERI

Junior Advisor
Religion III
American
Government
Sociology
American
History
World History



SISTER M. MARIEL

Freshman Advisor
Religion I, II
Shorthand
Typing I, II



SISTER M. ROSINA

Freshman Advisor
Religion II
English III, IV
Homemaking I, II



SISTER M.
ALPHONSA

Sophomore Advisor
French I, II
Latin II
Music



SISTER M.
ALOYSIA

Music



MRS. MARIE KRIDER

Librarian



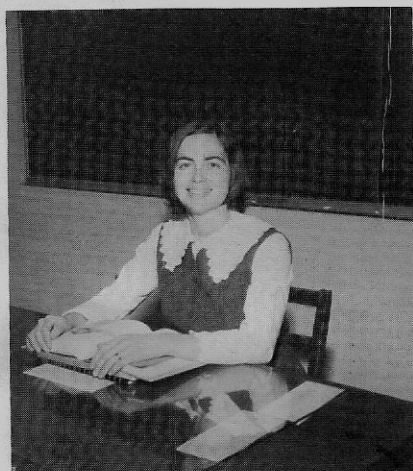
MRS. ANNE MILES

Physical Education



MR. EUGENE BOYLE

Advanced Mathematics
Algebra I, II
Physical Education



MRS. SYLVIA SINGER

Sophomore Advisor
English I, II



MR. JOHN MILLHEISLER

Bookkeeping
Business Math
Mechanical Drawing



MR. CLARENCE CHARITON

Geometry
General Science



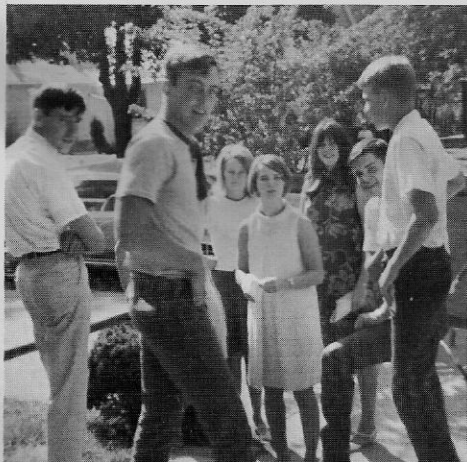
STUDENT COUNCIL



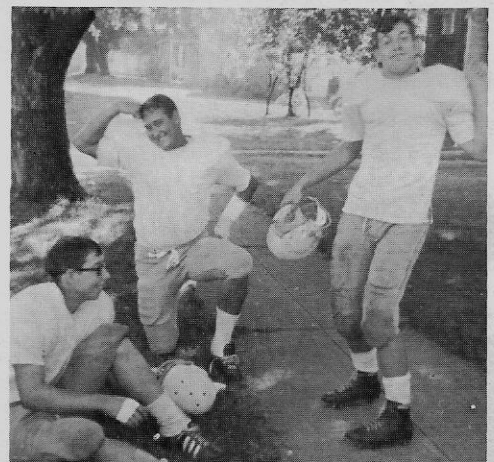
Senior Boys enjoying their usual amount of female company.



STUDENT COUNCIL OFFICERS--Bob Elgee, President; Donna Shively, Secretary; Mary Bauman, Treasurer; Pat Gray, Vice-President.



Punk Sophomores contemplate coming school year on registration day.



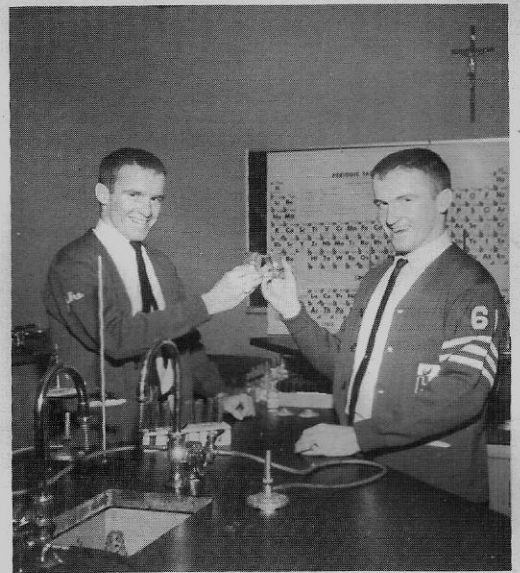
These "real men" show what it takes to be an IHM football player.



Would somebody please tell Sue Ransom to get out of Pat Miles' way.



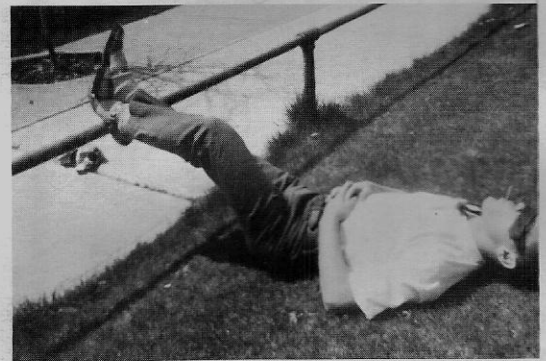
Just possibly the greatest orator of our time.



Two well-known chemists explore the possibilities of a serum to eliminate "Dumb Girls."



Auctioneer Gene Boyle swindles customers into buying this likely looking stock.



Who said there is no reason to wear ties to school?



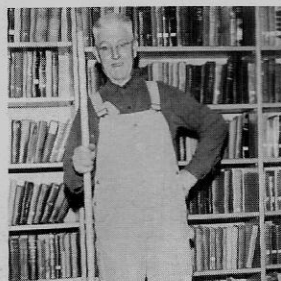
"Biggy Rat" and his cool chicks.



IHM's own Greek Goddess.



"Hey man, can the light!"



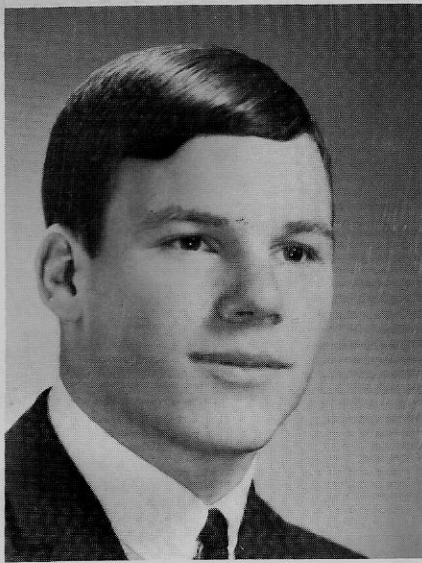
So what's new?



Three old bags.

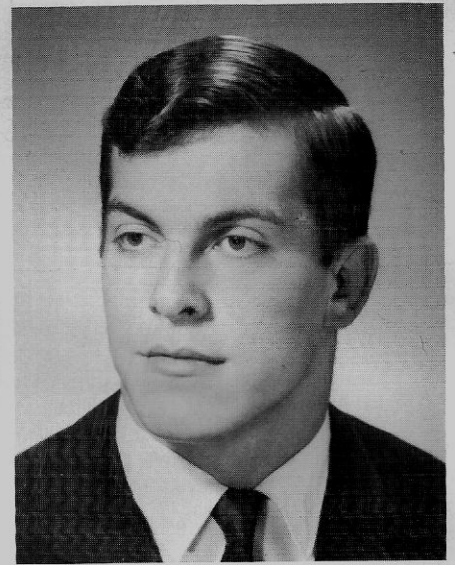


SENIORS



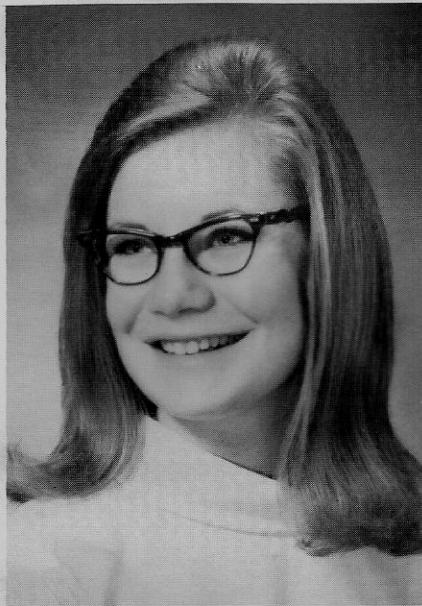
EDWARD MIHELICH

Class Officer 2, 4; Student Council 2, 3, 4; Student Council Vice-President 3; Press Club 2, 3, 4; Laurel Staff 3, 4; Le Coeur Staff 4; Glee Club 3, 4; Math Club 1, 4; Lettermen's Club 1, 2, 3, 4; Football 1, 2, 3, 4; Basketball 1, 2, 3, 4; Baseball 1, 2; Track 2, 3, 4; State A-3 Basketball Team 3; Team of the Year 2, 4; Boys State 3; Elks Leadership Award 4; Most Valuable Student 1st place 4.



CHRISTOPHER JACOBSON

Class Officer 2, 3, 4; Student Council 2, 3; Glee Club 3, 4; Squires 1, 2, 3; Lettermen's Club 1, 2, 3, 4; Football 1, 2, 3, 4; Basketball 1, 2, 3, 4; Track 2, 3, 4; State A-3 Basketball Team 3; Team of the Year 2, 4; Boys State Alternate 3; 1967 Homecoming King.



DONNA ANDERSEN

Class Officer 2, 4; National Honor Society 3, 4; Press Club 3, 4; Laurel Staff 3, 4; Le Coeur Staff 4; Glee Club 1, 2, 3, 4; Pep Club 1, 2, 3; Girls State 3; Most Valuable Student Award 3rd place 4.



PATRICIA MILES

Class Officer 1, 3, 4; Student Council 4; Press Club 3, 4; Le Coeur Staff 4; Glee Club 1, 2, 3, 4; Girls Special Chorus 2, 3, 4; Legion of Mary 1; Pep Club 1, 2, 3, 4; Drill Team 1, 2; PEMM 4; Cheerleader 3, 4; Junior Prom Princess 3; 1967 Homecoming Queen; Junior Miss Pageant, 3rd Place 4.

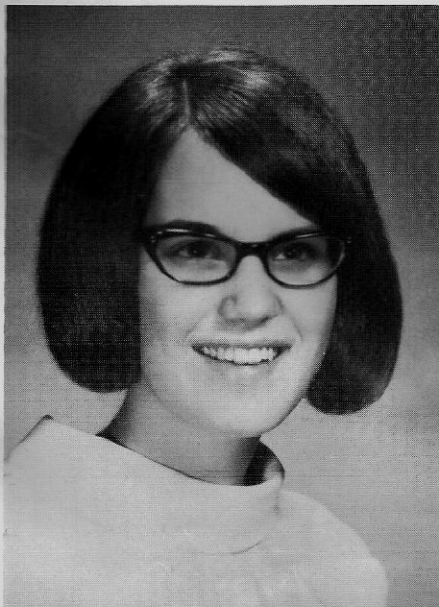


MICHAEL GRAY

Class Officer 2, 3, 4; Student Council 2, 3, 4; Press Club 2, 3, 4; Laurel Staff 3, 4; Le Coeur Staff 4; Glee Club 1, 2, 3, 4; Lettermen's Club 1, 2, 3, 4; Football 1, 2, 3, 4; Basketball 1, 2, 3, 4; Baseball 1, 2; Track 2, 3, 4; State A-3 Basketball Team 3; Team of the Year 2, 4; All State Basketball 3.

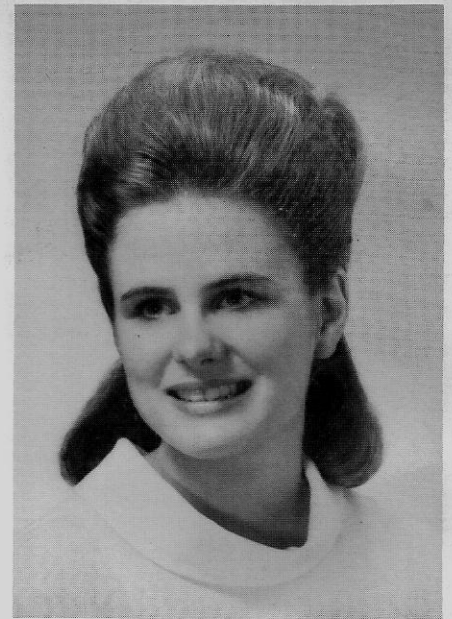
SUSAN RANSOM

Class Officer 4; Student Council 4; National Honor Society 4; Press Club 4; Le Coeur Staff 4; Glee Club 2, 3, 4; Legion of Mary 1; Pep Club 1, 2, 3; Girls State Alternate 3.



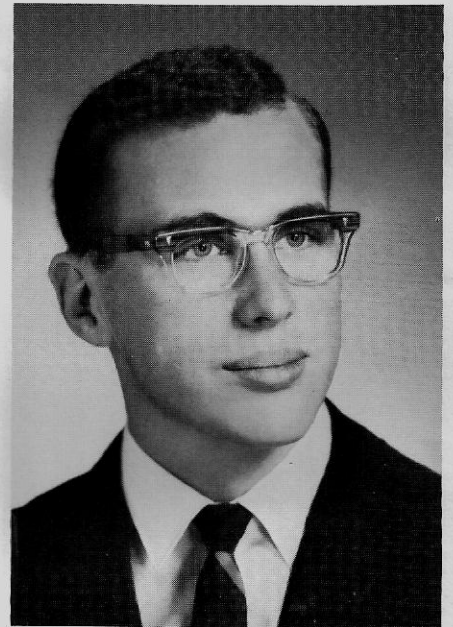
COLLEEN BAKER

Transfer: Tekoa High School
Tekoa, Washington
Student Council 3; Le Coeur Staff 4; Glee Club 2, 3, 4; Pep Club 2, 3, 4; Drill Team 3; Pep Band 3; PEMM 3, 4; Tennis Club 3; Cheerleader 4; Junior Prom Queen 3; Junior Miss Pageant, 2nd place 4.



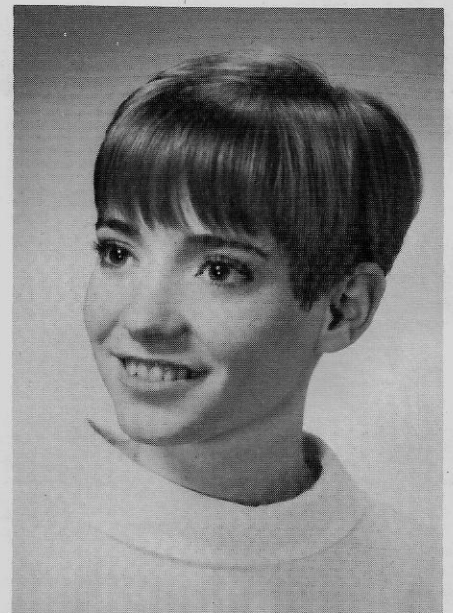
TERRY BAUMAN

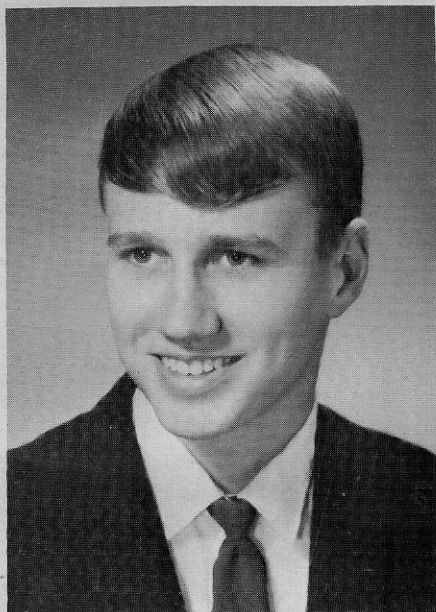
Transfer: Holy Redeemer
Oakland, California
National Honor Society 4; Glee Club 3, 4; Basketball 3; Track 4.



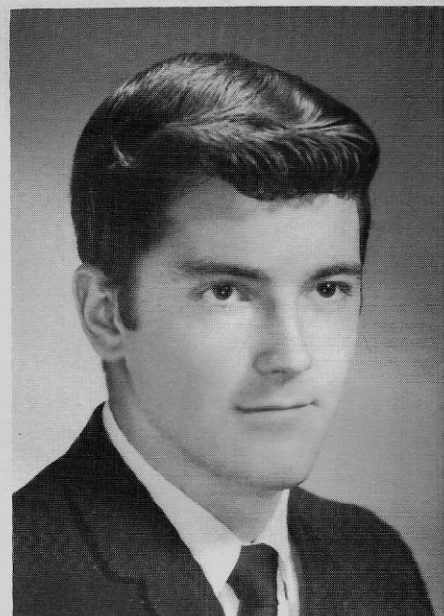
VIRGINIA BOWSER

Press Club 3, 4; Laurel Staff 3, 4; Le Coeur Co-Editor 4; Glee Club 2, 3, 4; Pep Club 1, 2, 3; Silkscreen 3, 4; Junior Prom Princess 3.

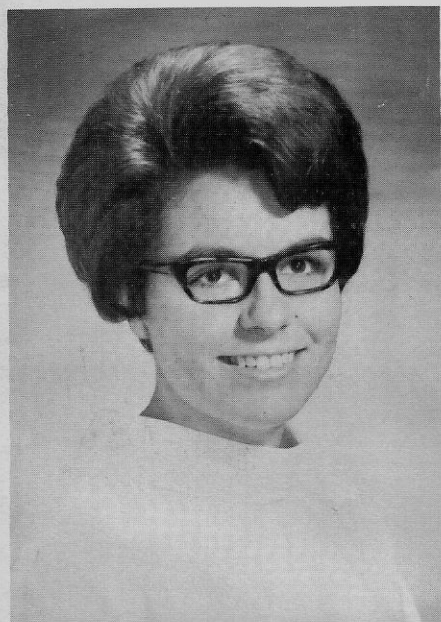




ALLEN BROWN
Squires 1, 2, 3, 4; Football
1; Basketball 1; Baseball
2.

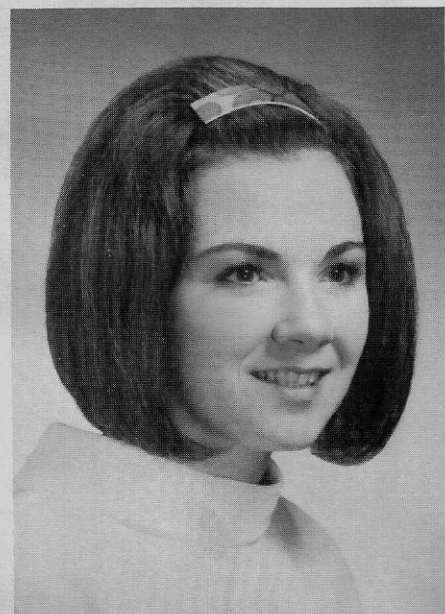


DAVID DIEMERT
Squires 1, 2; Football 1.

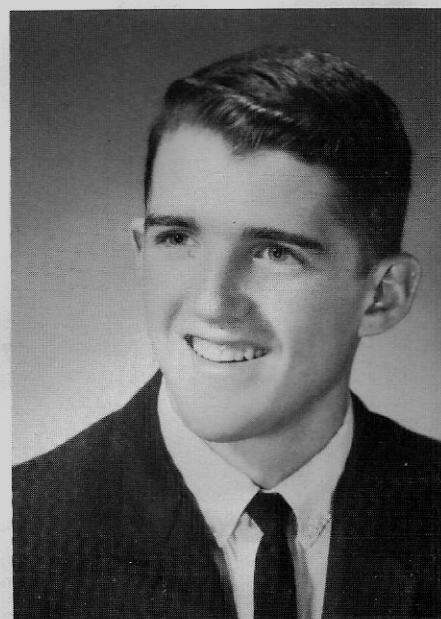


DEBORAH CASTELLAN
Glee Club 1, 2, 3, 4; Girls
Special Chorus 2, 3, 4; De-
bate Club 4; Pep Club 2, 3,
4; Pep Band 3; FHA 4; Chess
Club 1; PEMM 2, 3, 4; Drill
Team 2; Tennis Club 3, 4;
Ski Club 3, 4; Junior Miss
Pageant 4.

ROBERT ELGEE
Student Body President 4; Class Officer
1, 2, 3; Student Council 2, 3, 4; National
Honor Society 3, 4; Glee Club 3; Letter-
men's Club 1, 2, 3, 4; Ski Club 3; Foot-
ball 1, 2, 3, 4; Basketball 1, 2, 3, 4; Base-
ball 1, 2; Team of the Year 2, 4.



CONSTANCE CHASE
Student Council 4; Le Coeur
Staff 4; Glee Club 2, 3; So-
dality 3, 4; Pep Club 1, 2, 3;
Drill Team 1, 2, 3; PEMM 3;
FHA 4; Chess Club 1.





JOHN FISCUS

National Honor Society 4; Press Club 3, 4; Laurel Staff 4; Le Coeur Staff 4; Lettermen's Club 4; Math Club 1, 4; Chess Club 1; Football 1, 2, 3, 4; Basketball 1, 2, 3; Track 2, 3, 4; Team of the Year 4; Most Valuable Student Award 2nd place 4.

PAUL FROMM

Glee Club 3, 4; Lettermen's Club 1, 2, 3, 4; Football 1, 2, 3, 4; Basketball 1, 2, 3, 4; Track 3, 4; State A-3 Basketball Team 3; Team of the Year 2, 4; All-State Football 4; All-State Basketball 3; Nomination, Athlete of the Year 4.



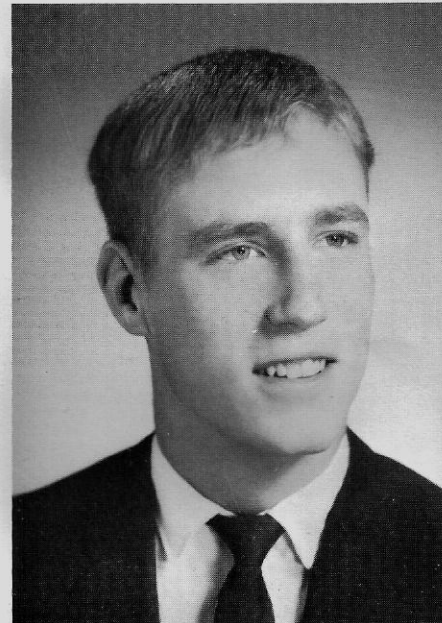
SUSAN GALLES

Press Club 2; Le Coeur Staff 4; Glee Club 1, 2, 3, 4; Girls Special Chorus 2, 3, 4; Pep Club 1, 2, 3, 4; Pep Band 2; Chess Club 1; Drill Team 1, 2, 3; Cheerleader 4.



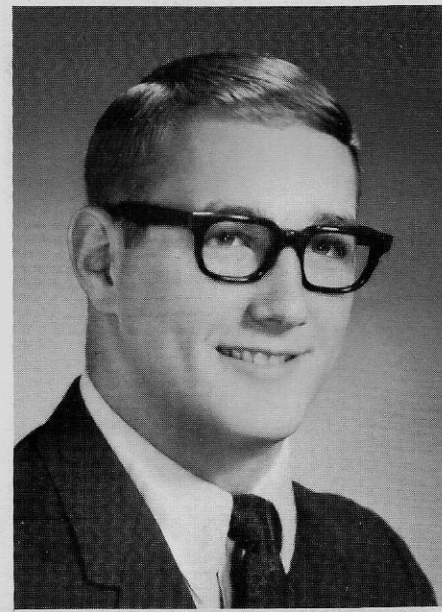
PAUL GEBHART

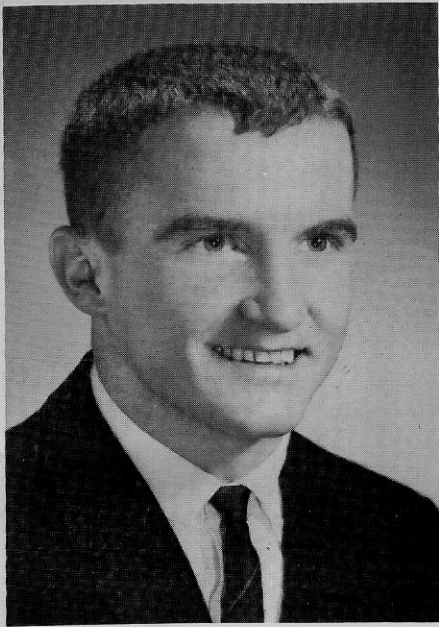
Student Council 4; Lettermen's Club 2, 3, 4; Squires 3; Football 1, 2, 3, 4; Basketball 2, 3; Basketball Manager 4; Track 2, 3, 4; Team of the Year 2, 4.



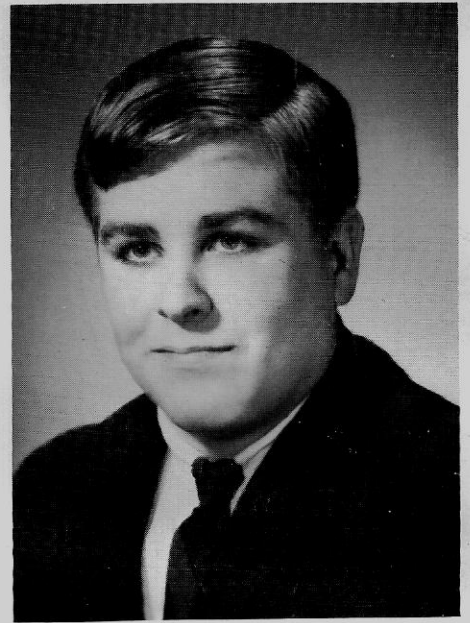
JAMES GIESA

Student Council 3; Glee Club 3, 4; Lettermen's Club 3, 4; Math Club 1; Ski Club 3, 4; Football 2, 3, 4; Basketball 2, 3, 4; Baseball 1, 2; Track 4; State A-3 Basketball Team 3; Team of the Year 2, 4; Most Valuable Player, Football 4; All Conference 3; Honorable Mention, All-American Football 4.

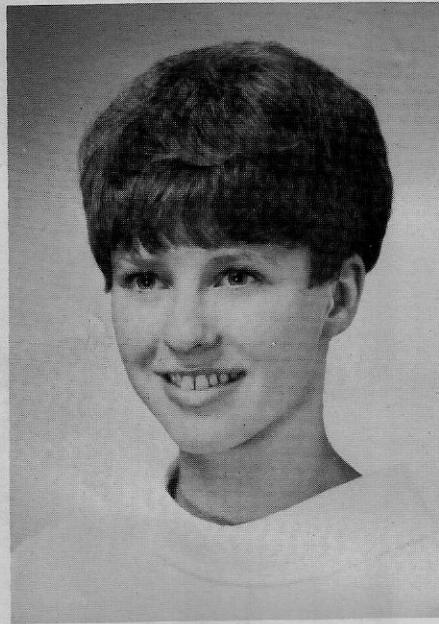




PATRICK GRAY
Student Council Vice-
President 4; Class Officer
1, 2, 3; Student Council
1, 2, 3, 4; Press Club 2, 3,
4; Laurel Staff 3, 4; Le
Coeur Staff 4; Glee Club
2, 3, 4; Lettermen's Club
1, 2, 3, 4; Football 1, 2, 3,
4; Basketball 1, 2, 3, 4;
Baseball 1, 2; Track 2, 3, 4;
State A-3 Basketball Team
3; Team of the Year 2, 4;
All-State Basketball 3;
Boys State 3.

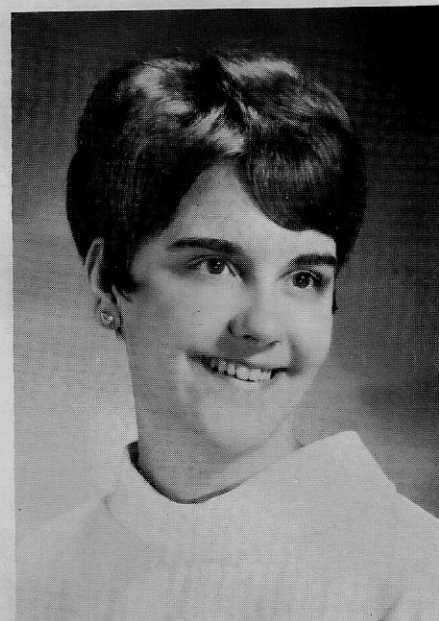


LANCE KOEP
Class Officer 1; Lettermen's Club 3, 4;
Football 1, 2, 3, 4; Basketball Manager
2, 3, 4; Track Manager 3; Team of the
Year 2, 4.

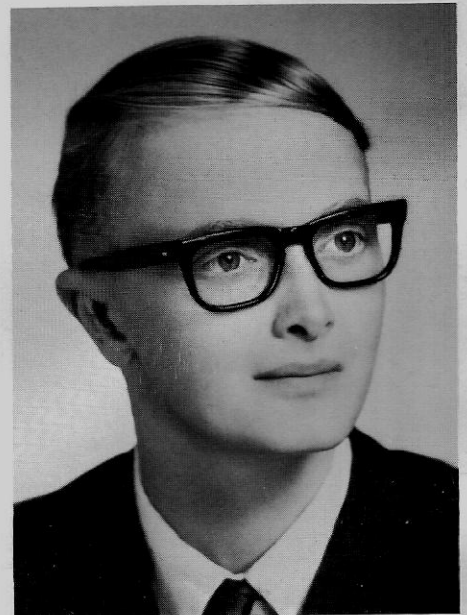


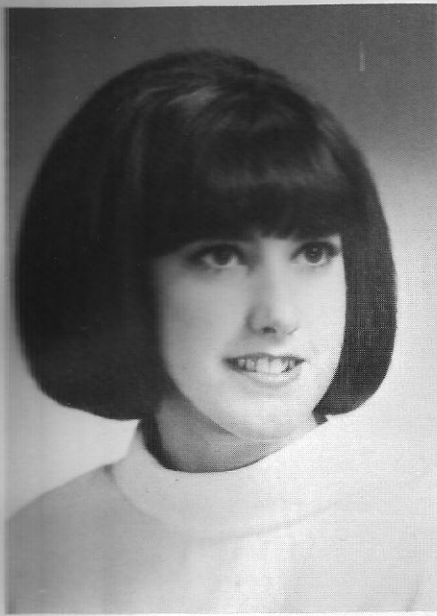
JOAN JAEGER
Student Council 4; Le Coeur
Staff 4; Glee Club 1, 2, 3, 4;
Pep Club 1, 2, 3; Drill Team
1, 2, 3; FHA 4.

RONALD KOEP
Squires 3, 4; Math Club 1; Chess Club
1.



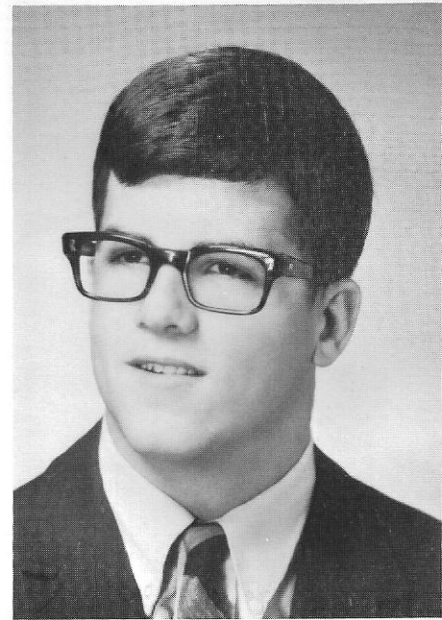
DONAGENE KNIGHT
Student Council 3; Le Coeur
Staff 4; Glee Club 1, 2, 3, 4;
Girls Special Chorus 2, 3;
Legion of Mary 1; Sodality 2,
3, 4; Pep Club 1, 2, 3, 4; FHA
4; Chess Club 1; Drill Team
1, 2, 3, 4; Tennis Club 3, 4;
Ski Club 4; PEMM 2, 3, 4;
Junior Miss Pageant 4.





JUDY MARTIN

Glee Club 1, 2, 3, 4; Pep Club 1, 2, 3, 4;
Pep Band 3; Drill Team 1, 2, 3, 4.



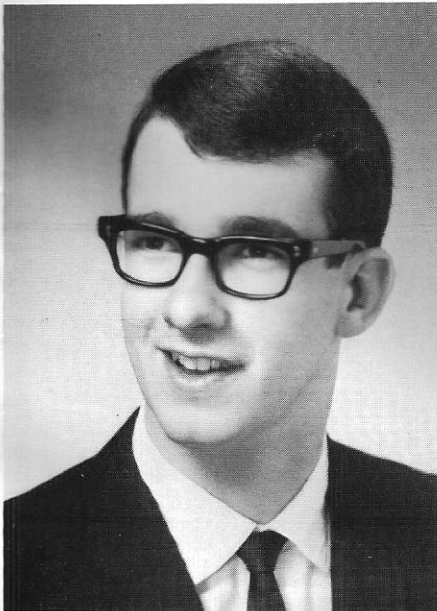
THOMAS McFARLAND
Lettermen's Club 1, 2, 3, 4;
Football 2, 3, 4; Basketball
1, 2; Track 2, 3, 4; Golf
1, 2, 3, 4; Homecoming
Prince 4.



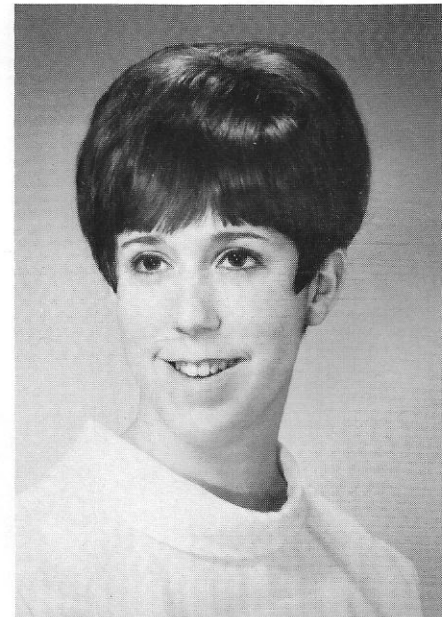
MARY McFARLAND
Class Officer 1, 2, 3; Stu-
dent Council 1, 4; National
Honor Society 3, 4;
Press Club 3, 4; Laurel
Staff 3, 4; Laurel Editor
4; Le Coeur Staff 4; Glee
Club 1, 2, 3, 4; Legion of
Mary 1; Pep Club 1, 2, 3,
4; Drill Team 1, 2; Cheer-
leader 3, 4; Homecoming
Princess 4; Girls State 3;
DAR Citizenship Award 4;
Elks Leadership Award 1st
place 3; 2nd place 4;
Most Valuable Student
Award 1st place 4.

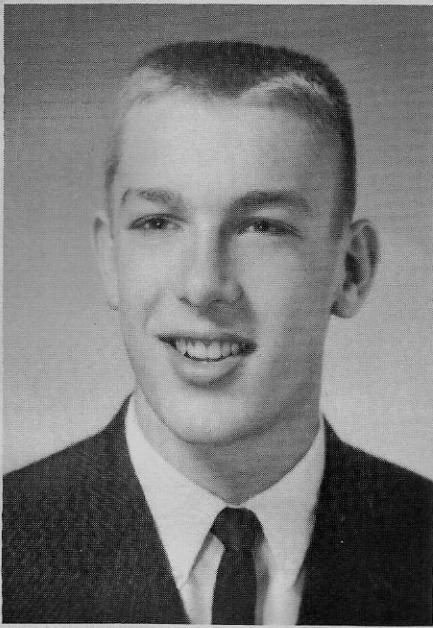
THOMAS MARTIN

Math 1; Squires 1, 2.

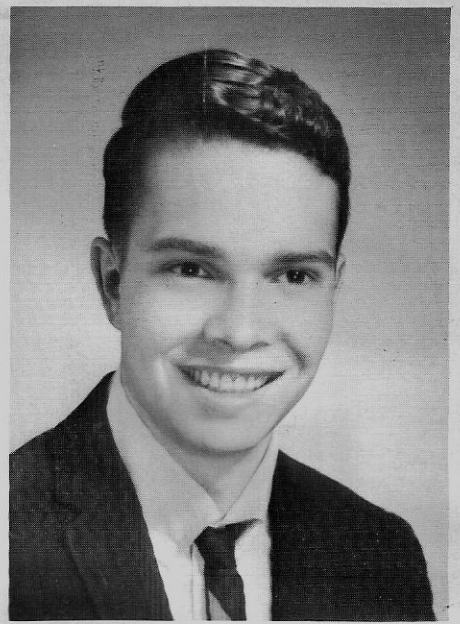


SALLY McMURRAY
Press Club 3, 4; Laurel Staff
3, 4; Le Coeur Co-Editor 4;
Glee Club 1, 2, 3, 4; Legion
of Mary 1; Sodality 3, 4; Pep
Club 1, 2, 3, 4; Drill Team
2, 3; Homecoming Princess
4; Girls State Alternate 3.

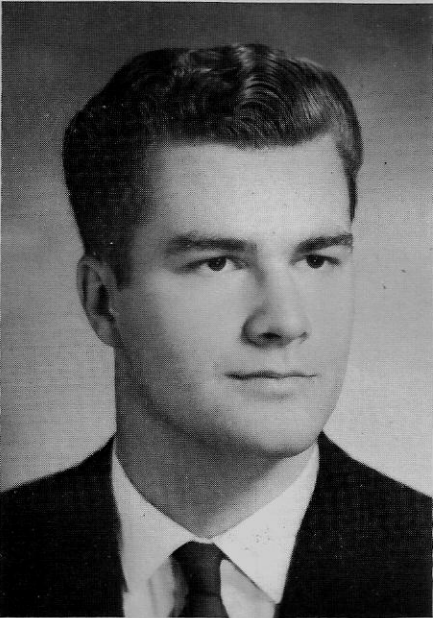




PATRICK MILLER
Lettermen's Club 3, 4;
Math Club 1; Ski Club 3;
Football 2, 3, 4; Basket-
ball 2, 3; Baseball 1, 2;
Track 3, 4; Team of the
Year 2, 4.

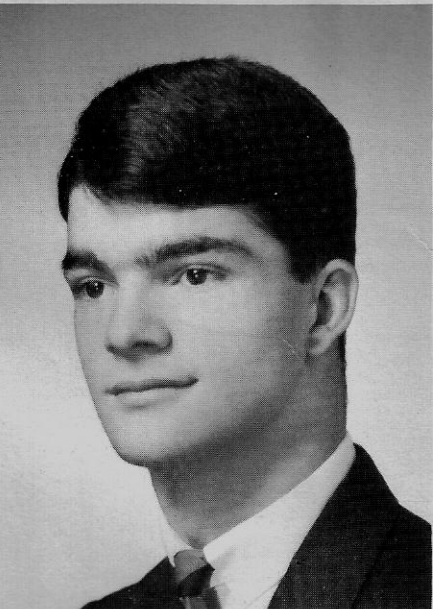


TERRANCE PUF AHL
Le Coeur Staff 4; Squires 1, 2, 3; Knights
of Columbus 4; Ski Club 3; Football 2.



KENNETH MONTREUIL
Lettermen's Club 3, 4;
Ski Club 3; Football 2, 3,
4; Track 2, 3, 4; Team of
the Year 2, 4.

LAWRENCE RIPLINGER
Class Officer 1; Student Council 1;
Lettermen's Club 2, 3, 4; Squires 1;
Math Club 1; Football 1, 2, 3, 4; Basket-
ball 1, 2, 3, 4; Baseball 2; Track 3, 4;
State A-3 Basketball Team 3; Team of
the Year 2, 4.



LLOYD OGDEN
Le Coeur Staff 4; Letter-
men's Club 3, 4; Squires
1, 2; Ski Club 3; Football
1, 3; Baseball 1; Track 4.

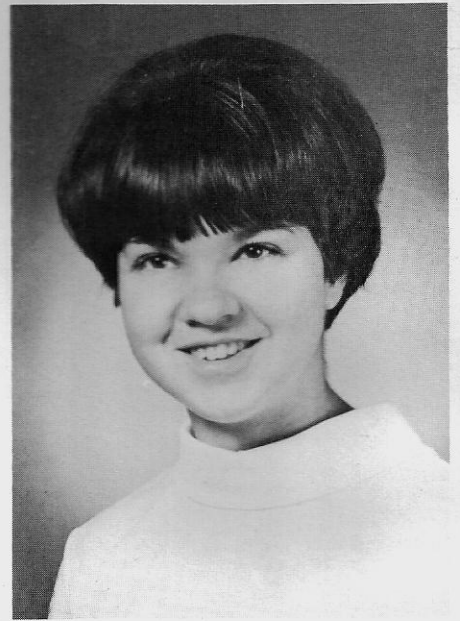




CLIFFORD SINGER

Lettermen's Club 3, 4; Squires 2; Ski Club 3, 4; Baseball 2; Track 2, 3, 4; Golf 3.

JULIE SOLOMON
Transfer: Sandpoint High School
Sandpoint, Idaho
Le Coeur Staff 4; Glee Club 3, 4; Pep Club 2, 3, 4; Drill Team 2, 3; Homecoming Mascot 2; Cheerleader 4.



JANIS VALENTE

Glee Club 1; Pep Club 1; Drill Team 1; FHA 4.

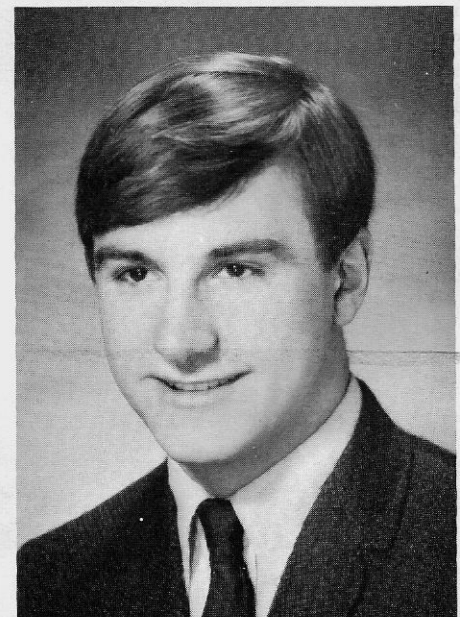
BARBARA SONNICHSEN

Press Club 2; Le Coeur Staff 4; Glee Club 1, 2, 3, 4; Legion of Mary 1; Pep Club 1, 2; Drill Team 2, 3; PEMM 2, 3; FHA 4.



GARY WILLIAMS

Lettermen's Club 3, 4; Basketball 2, 3, 4; Track 3, 4; Cross Country 4; Homecoming Prince 4.





Twelve and some thirteen year Seniors.



Girls and Boys Staters--Donna Andersen, Ed Mihelich, Mary McFarland, Pat Gray.



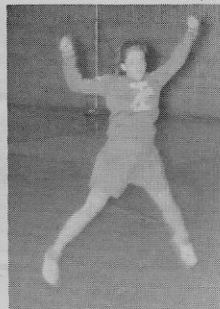
Junior Miss Contestants--Colleen Baker, Debbie Castellan, Pat Miles, Donagene Knight.



Man to man . . .



"I'm still available!"



"Of course I'll go to the prom Chris!"



*#--!!?!!!



Hu! Hu! Hu!



Bamboo bridge spans Hawaiian waterfall.



All-seeing Tiki helps chaperone 1967 Junior Prom.



Colleen Baker is crowned Queen of Junior Prom.



Homecoming Queen and King Pat Miles and Chris Jacobson are flanked by their court Gary Williams, Sally McMurray, Mary McFarland, Ed Mihelich.



Chris looks on as Pat is seated on her throne.



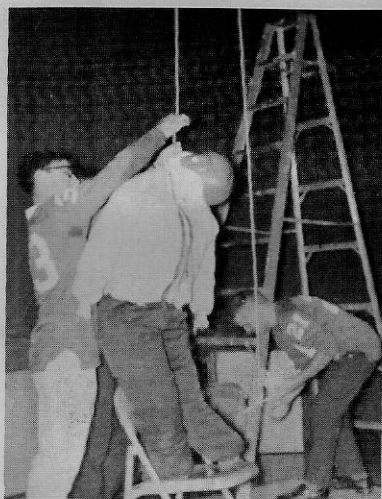
Senior students enjoy their lunch on sunny fall afternoon.



"Cool Hand Luke"



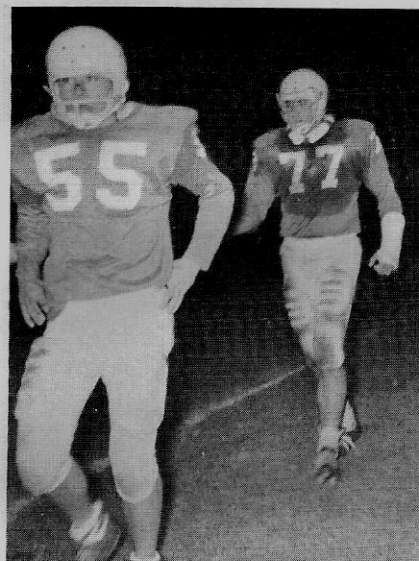
"Yea Ed"



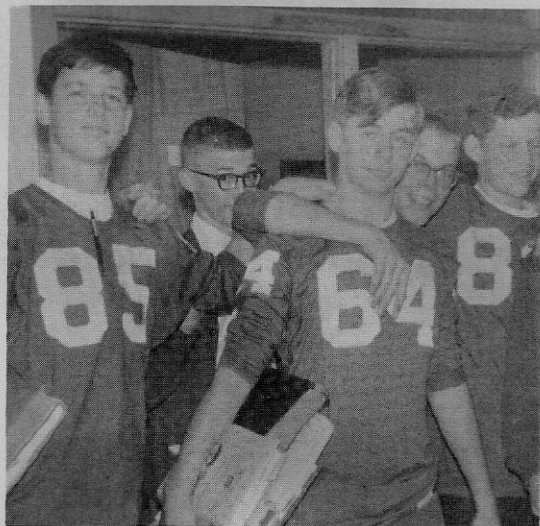
Ed "th" tring "th" (strings) 'em up.



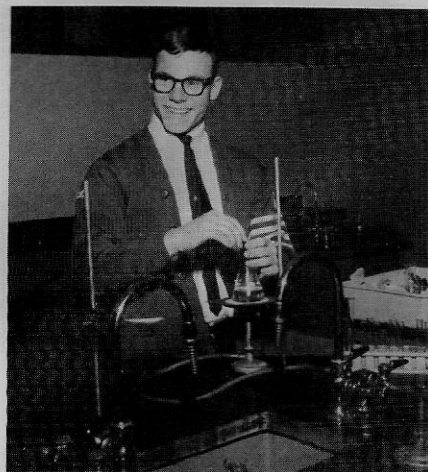
Maureen McCammon gives that fierce Panther look?



Larry Riplinger and Jim Giesa step out of game for breather.



Skinny Sophomores sport football jerseys on annual Homecoming day.



Ed enjoys his SECOND most favorite pastime.

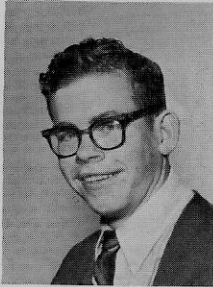


UNDERCLASSMEN

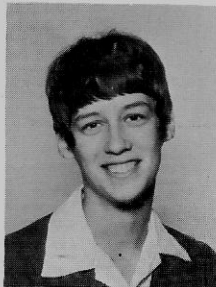
Junior Class



Gerard Mason
President



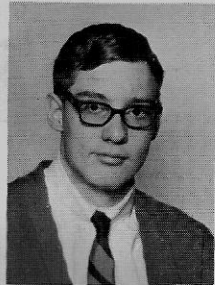
Ronald Douglas
Vice-President



Laura Gebhart
Secretary



Donald Shannon
Treasurer

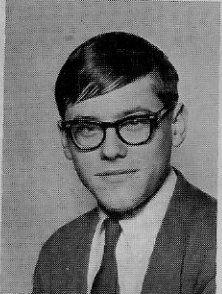
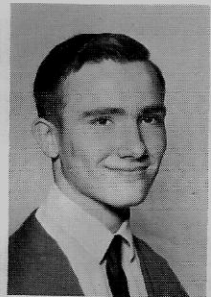


James Dolan
Representative

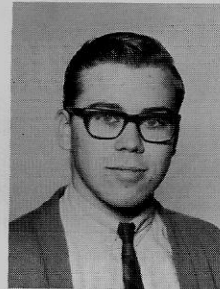


Mary Bauman

Michael Chase



Robert Blessing
Bernadette Brooten



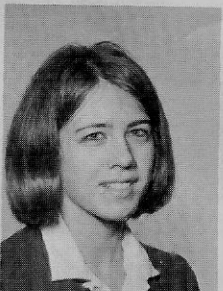
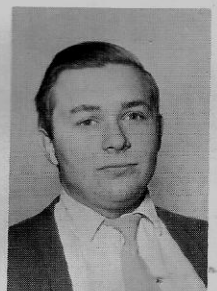
Michael Daly
Barbara Daugharty



Darlene Brueggeman
Joanne Brueggeman



Lyn De Barbrie
William Dickinson

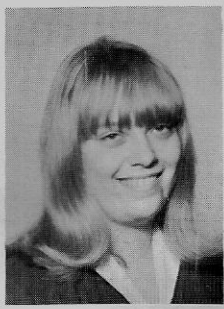
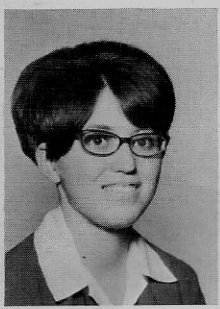


Linda Buddrius
Patrick Carper

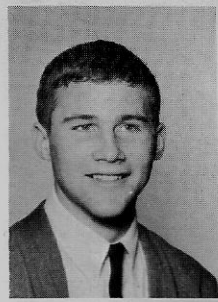


Lola Guimond
James Hagan





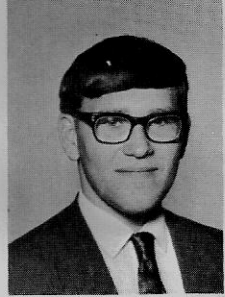
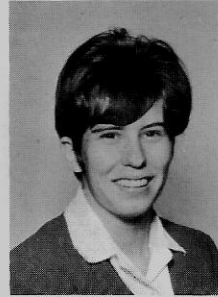
Ruth Harrington
Laura Hocevar



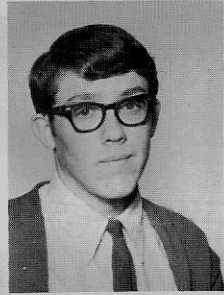
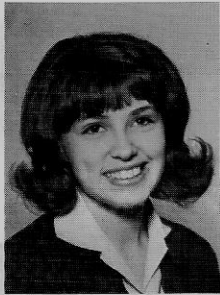
Jeffrey Norton
Linda Novak



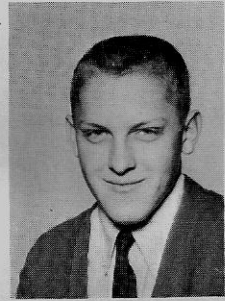
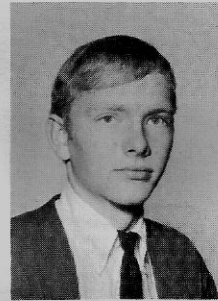
Judith Jacobson
Kathleen Keane



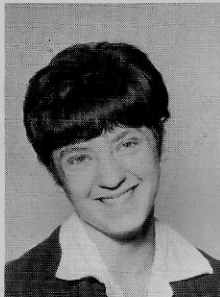
Joyce Ohnemus
George Peters



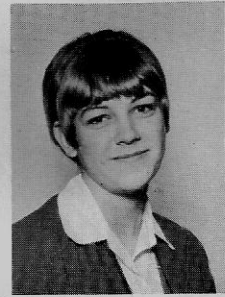
Melanie Koep
Thomas Kom



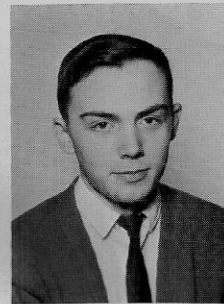
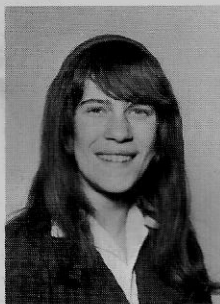
James Poitevin
James Riplinger



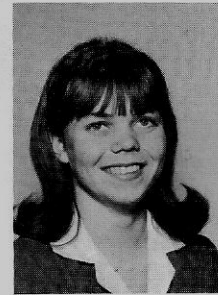
Nancy Lake
Anthony Larsen



Theresa Roche
Cathryne Sand



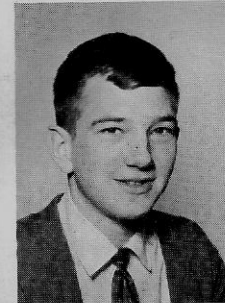
Charlotte Lovell
Brian McPoland



Donna Shively
Maria Thompson



Michael Miller
Gayla Newell

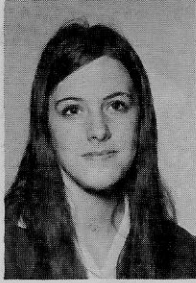


David Yeager
Jack Wardian

Sophomore Class



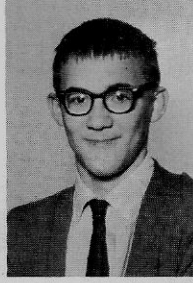
Walter Matson
President



Jane McFarland
Vice-President



Melanie Koontz
Representative



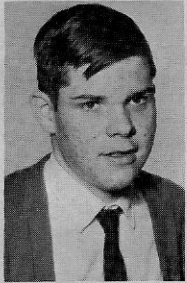
Terry Johnston
Representative



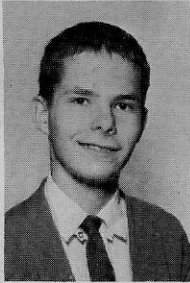
Marlene Andersen
Secretary



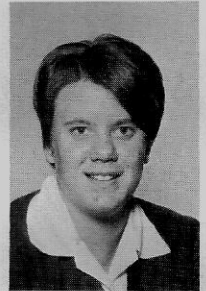
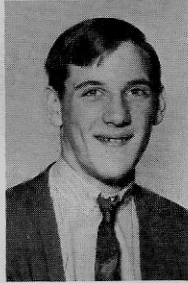
John McFarland
Treasurer



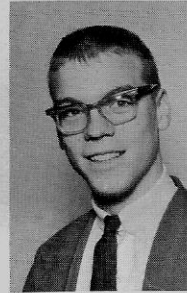
Dale Andrews
John Arney
John Boller



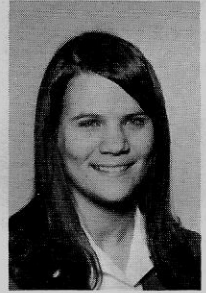
Maureen Hartnett
Myra Hawley



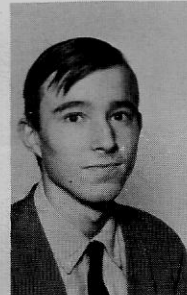
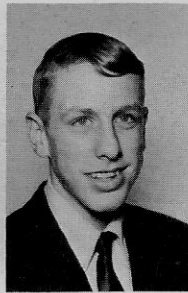
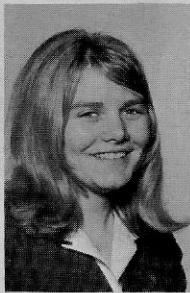
Lorraine Bowser
Lynette Brown
Lynda Carter



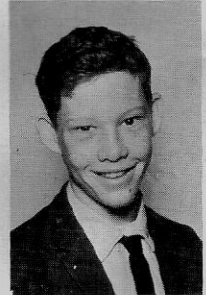
M. J. Huetter
Cindy Isaacson



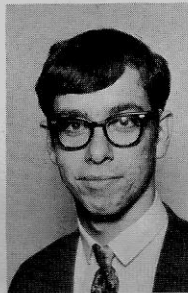
Teresa Cayko
Cheryl Coleman
Robert Dey



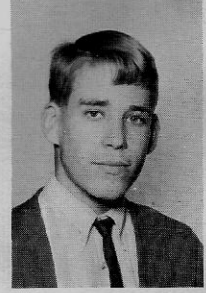
Michael Jessick
George Jost

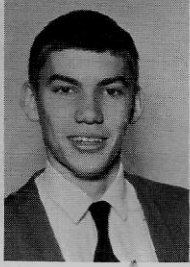


Sherry Fiscus
Joseph Foredyce
Stephen Gerger

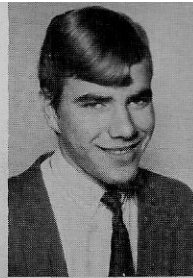
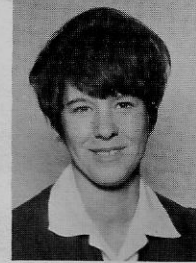
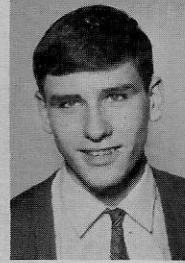


Bonnie Karst
Patrick King

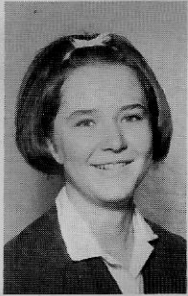




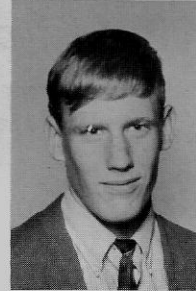
Siegfried Kirchner
Bruce Koester



Terry Moate
Janice Ohnemus
Randy Pringle



Fred Kowalski
Kristina Kryger



Ronald PuFahl
Dennis Purdy
Robert Riggs



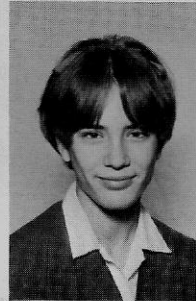
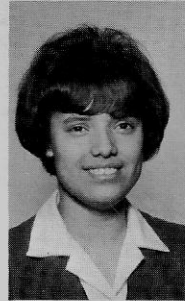
Pamela Kurdy
Rudy Marmon



Patricia Riplinger
Clarice Robertson
Dennis Smith



Daniel Martin
Maureen
McCammon



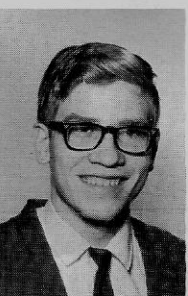
Marie Sneed
Terrine Spinazza
Julie Valente



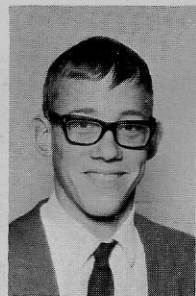
Ray Merrick
Kirk Miller



Clara Wallace
Beverly Walson
Joette Wardian

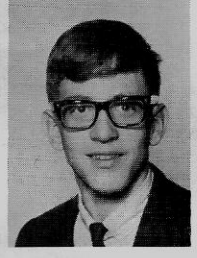
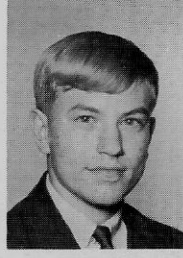
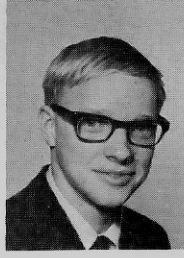
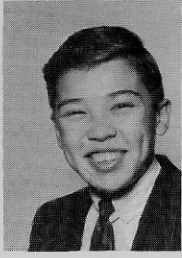
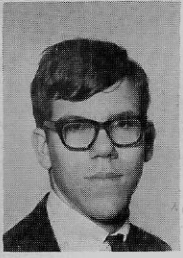


Susan Miller
Robert Moate



Arthur Webb
Robert Weber
Carol Wetmur

Freshman Class



Thomas Mihelich
President

William Boughton
Vice-President

Larry Jaeger
Representative

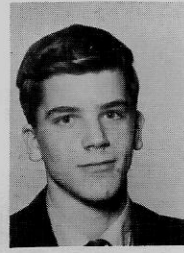
Joseph Wachsmuth
Representative

Sherrill Peterson
Secretary

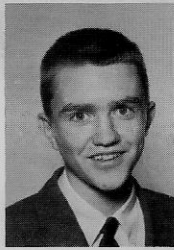
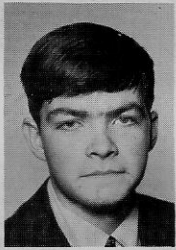
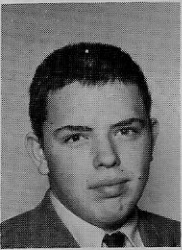
Steve Weber
Treasurer



Marlis Andersen
David Bauman
Michael Benbennick



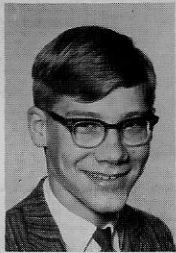
Randy Diemert
Sandra Georgius



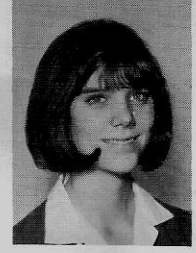
Dale Broadsword
Douglas Brown
Lonnie Brown



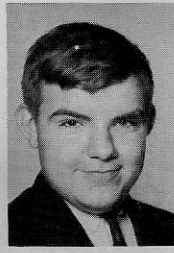
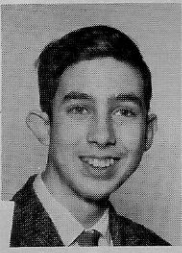
Sheila Gerger
Kathy Hammrick



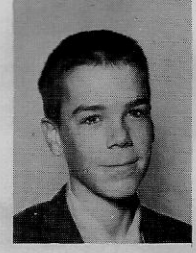
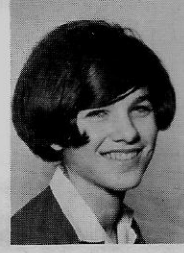
Phyllis Brueggeman
Robert Brueggeman
Harlan Buddrius



Joan Harrington
Teresa Henderson



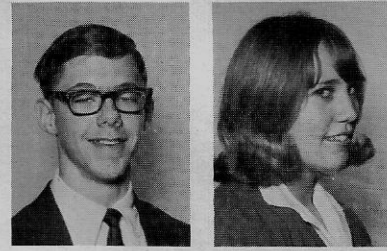
Raymond Buvel
Beverly Chariton
Michael Cieryca



Janet Hofmeister
Bruce Huetter



Scott Hurrell
Daniel Jacobson
David Jessick



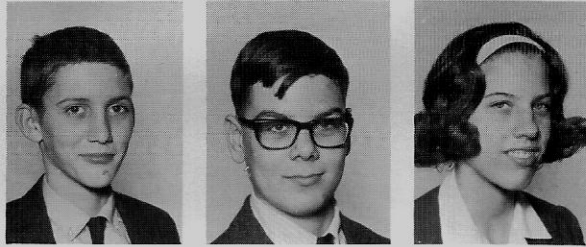
Kevin Roche
Shanna Romans



Michael Jost
Anthony Kapaun
Ronald Kienbaum



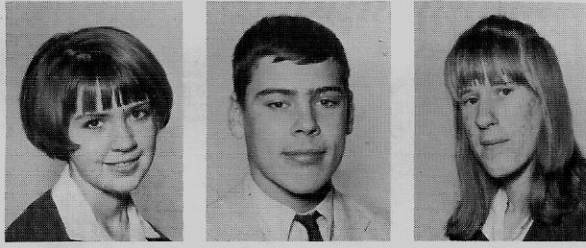
James Rosenlund
Kathleen Rust



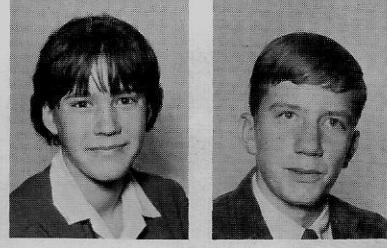
Manfred Kirchner
Court Koep
Cheryl Komosinski



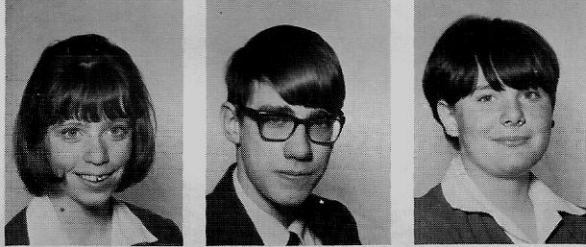
Cheryl Schmidt
Patricia Shively



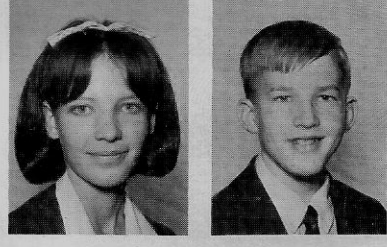
Carolee Kuka
Jeffery Lenz
Eileen Lovell



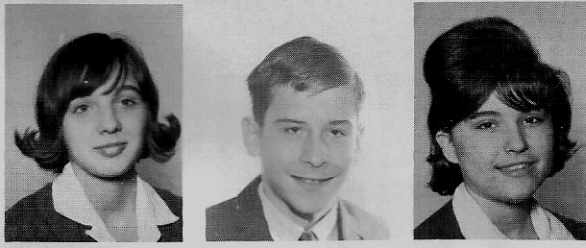
Julie Spinazza
David Stockwell



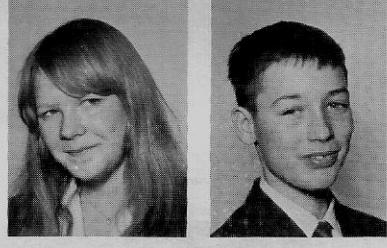
Maureen MacDonald
Glenn Martin
Cathy McCammon



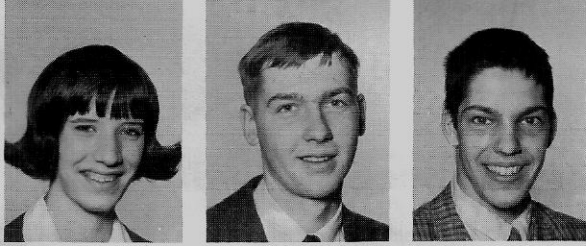
Linda Stoeklen
Roy Thompson



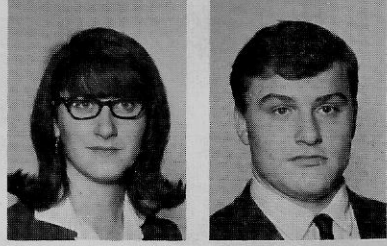
Candi McPoland
Robert Moate
Christine Moyles



Kimberley Troy
James Valente



Susan Neeser
Bradley Novak
Steven Palmer



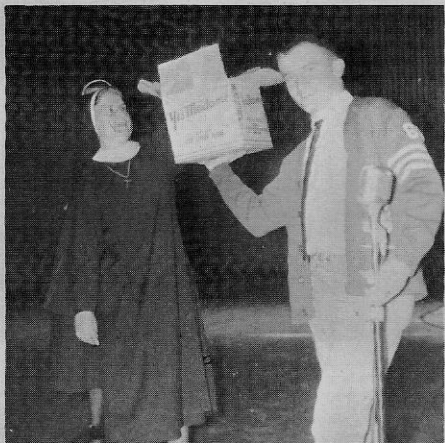
Bernadine Walson
Patrick Williams



Old Maids get their chance!!!!



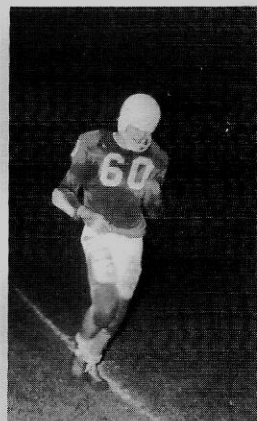
The "Dirty Dozen."



Who's the lucky girl who gets a date with Pat Gray???



White "Knight"



Take me out coach.



Finally !

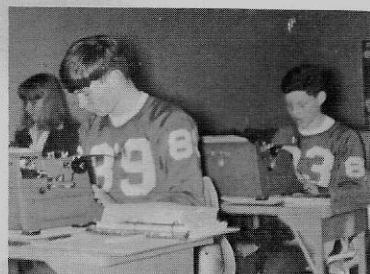


Hanging jury.

Everybody should have a class like this.



Someone get rid of the Fresca.







The Press Club puts out the school paper, THE LAUREL each month.



Mary McFarland, Editor of THE LAUREL poses with her pad and pencil.



THE LAUREL Staff gathers for the production of the paper.



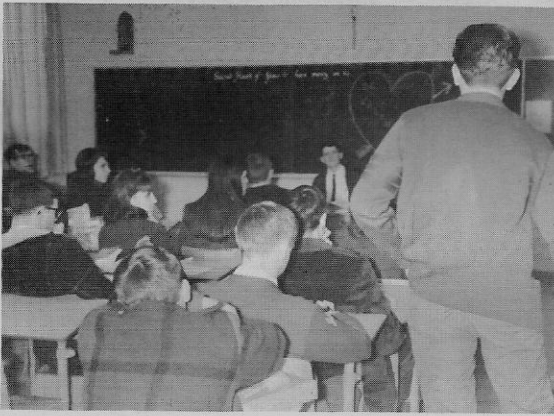
This year's Co-Editors of the LE COEUR are Ginny Bowser and Sally McMurray, seated with Sister M. Mariel, advisor.



The LE COEUR Staff worked many long days in order to produce the 1968 Annual.



The National Honor Society started the production of College Bowls this year in the school.



Student Council... IHM's ruling body.



Roger Brooks, IHM alumnus, shows slides of his stay in Vietnam.



Mary McFarland was honored as a Daughter of the American Revolution Good Citizen.



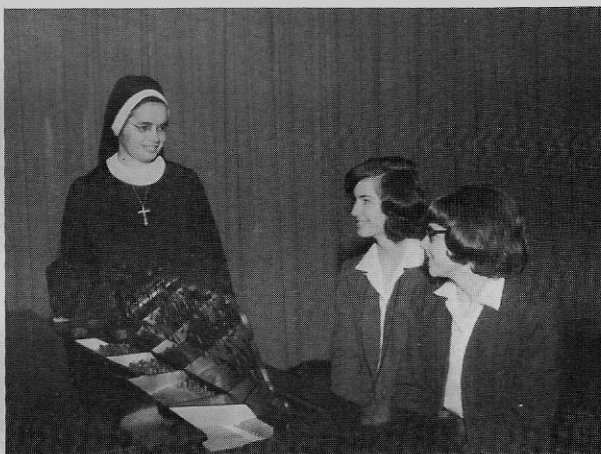
IHM's Future Homemaker of the Year--Donna Andersen.



IHM has its share of brains "too" in Math and Science Club.



IHM Sodality increases with experience.



Sister Alphonsa and her dynamic duo of Lola and Sherill.





IHM's Ski Club enjoys its favorite weather.



IHM's Tennis Club spends many hours practicing its game every spring.



Special Boys' Chorus--Ron Douglas, Jim Poitevin, Bob Blessing, and Jerry Mason, with accompanist Sherrill Peterson.



Special Girls' Chorus performs at many functions throughout Coeur d'Alene.

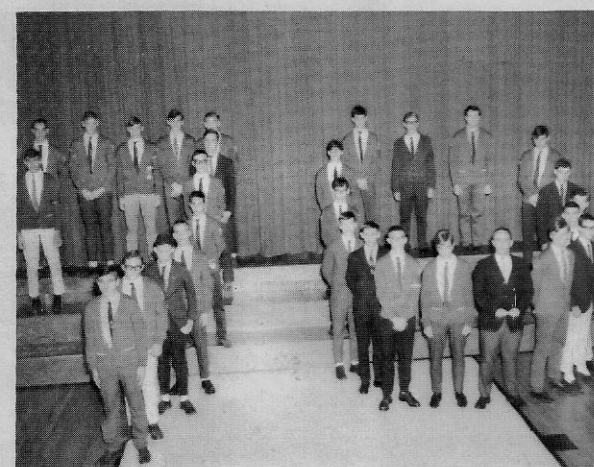




Future Homemakers of America--if they're lucky!



What lucky girl will trap one of these ready made husbands???



Spirited Sophomore Boys make up 70's Club.



PEMM constitutes the muscles of the female set at IHM.



Our REAL MEN--the IHM's Lettermen's Club.



I.H.M.'s Varsity Cheerleaders Sue Galles, Julie Solomon, Mary McFarland, Colleen Baker, Pat Miles.



During summer months varsity cheerleaders used bikes in ATTEMPT to stay in shape.



Julie and Colleen flex their pretty little muscles.



Junior varsity cheerleaders Laura Gebhart, Donna Shively, and Ruth Harrington.



The I.H.M. Pep Club has the spirit that a GRRREAT TEAM needs.



The ever improving Drill Team has provided entertaining addition to Panther games.



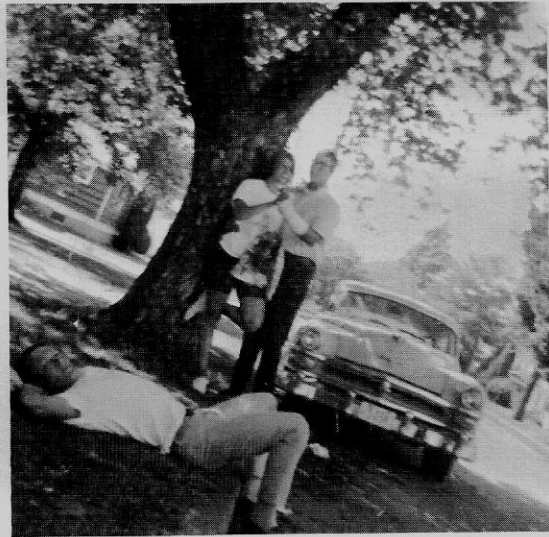
IHM Debate Club made a good start this year.



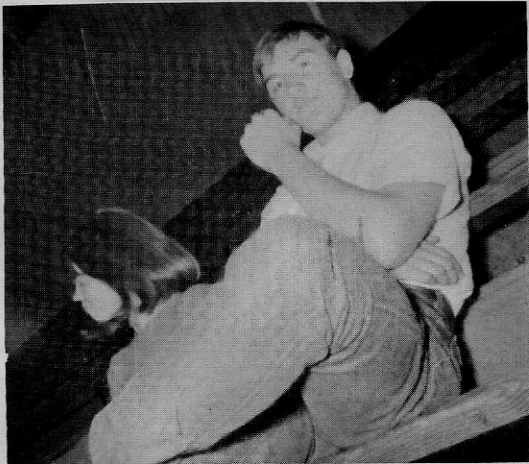
March on!



Panthers display their usual pre-practice enthusiasm (?)



Larry: "When I'm married..."



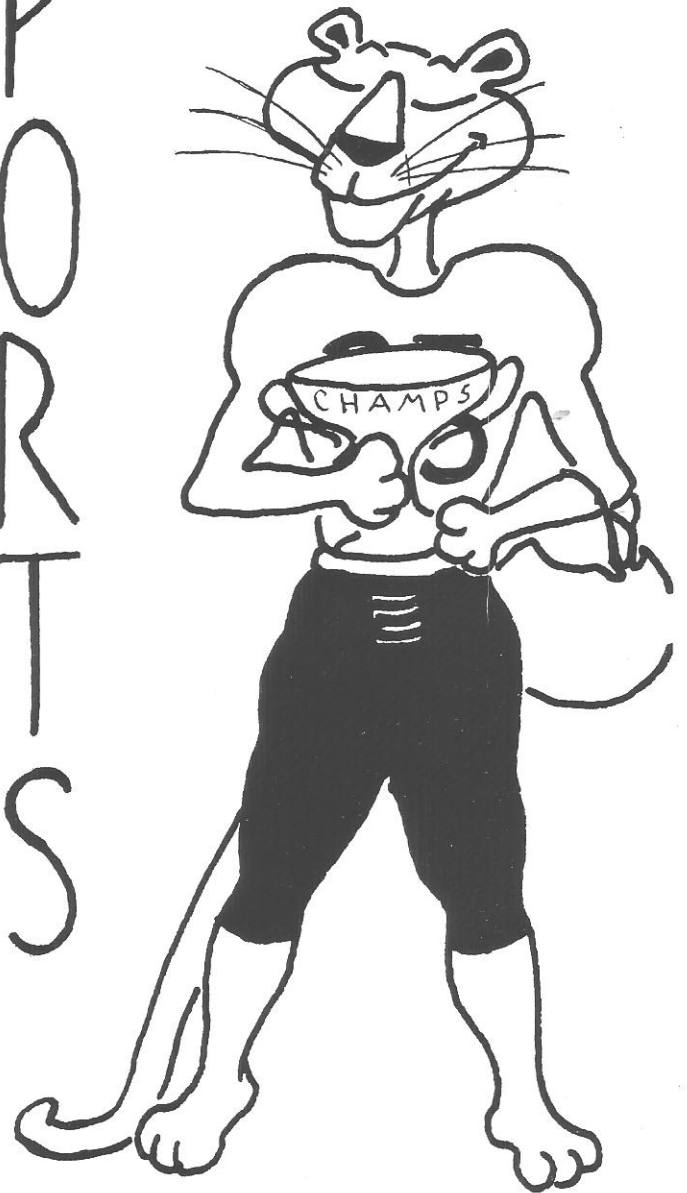
"BONNIE and CLYDE"



A typical Freshman class, "Full of sound and fury signifying nothing..."



S
P
O
R
T
S



Coach Boyle came to us four years ago. He has taught us, coached us and befriended us ever since. His record of 132 wins and 27 losses in four sports stands as a glowing tribute to his leadership, friendship, and versatility. What he has instilled in each of us and into our school is a zeal and a pride which is seldom captured and for which we can never repay him. We, the members of the class of 1968, wish to take this opportunity to thank Mr. Boyle for all that he has done for us and to wish him the best of luck in the future.

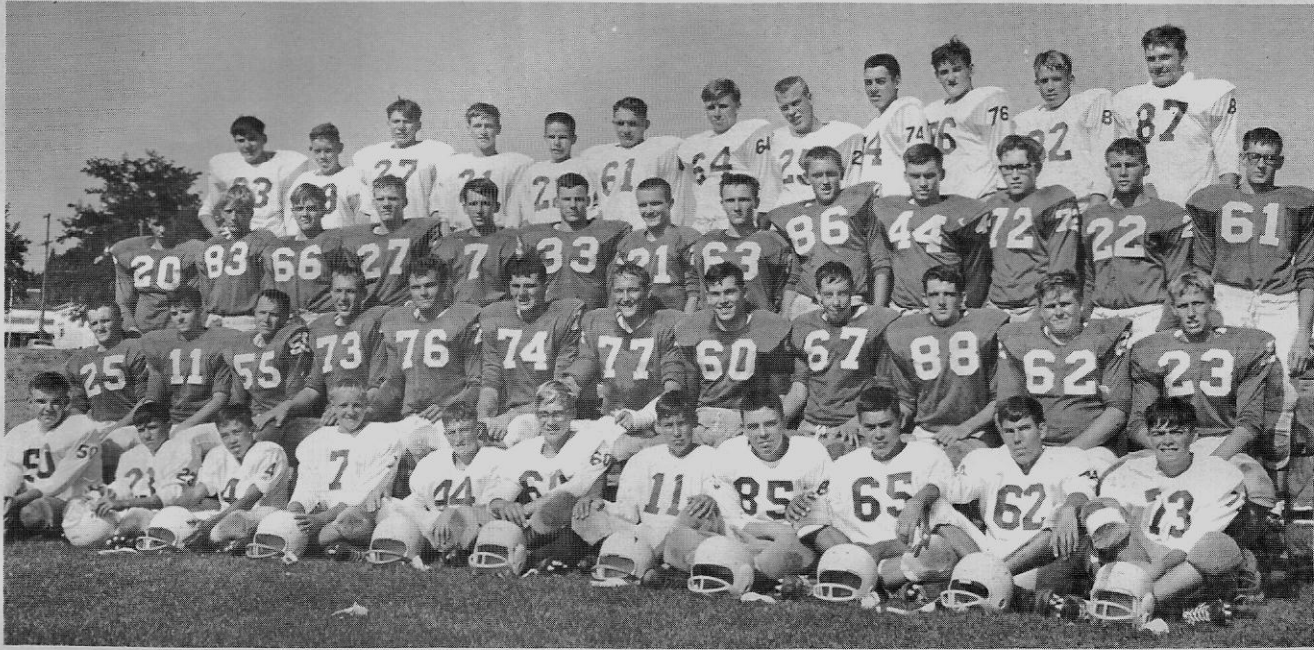


Thanks Coach

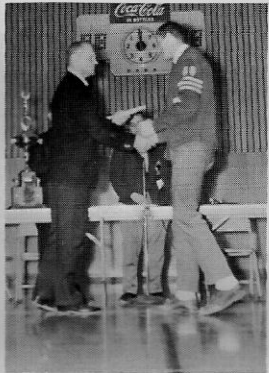


For Everything

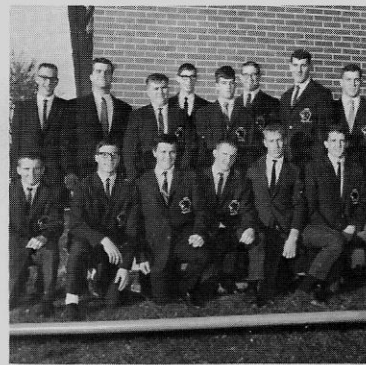
Football



1967 IHM High School "Panther" football team. The Panthers were named co-winners of the 1967 North Idaho Team of the Year and compiled an unbeaten string of 31 consecutive games.



Paul Fromm (left) was named to the All-State football team, and Jim Giesa (right) Honorable mention to the All-American football team.



Senior football players finished unbeaten Varsity careers.



Coach Boyle speaks at annual Football Banquet.



George Davis gave parents and athletes a stimulating dissertation on the value of competitive athletics.



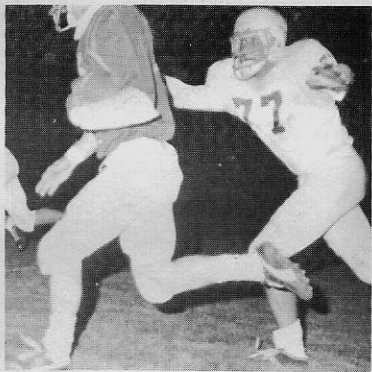
Jim Giesa--most valuable, and Larry Riplinger and Pat Gray--most inspirational sport their hardware.



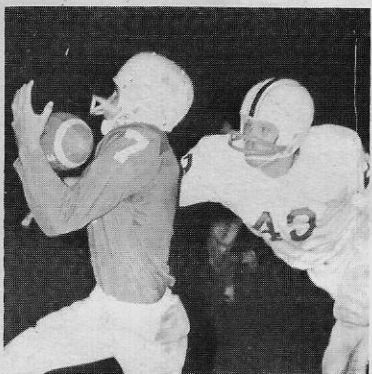
This powerful Panther offense rolled up a school record of 329 points.



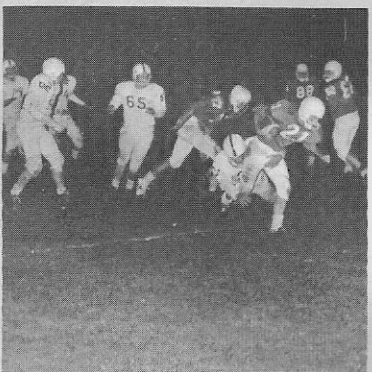
Ed Mihelich (33) plows into tackler while Bob Elgee (88) blocks in background.



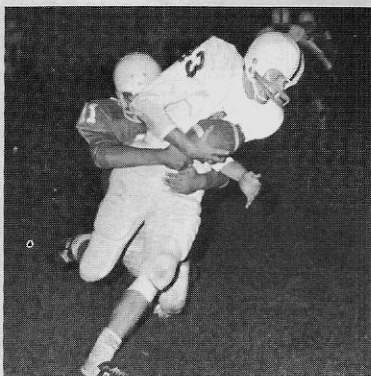
Jim Giesa (77) lunges to crush opponent.



Jerry Mason (7) snares pass just out of opponents reach.

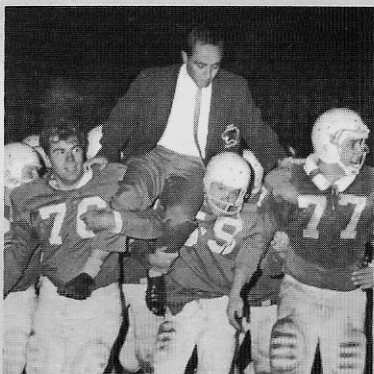


Mike Gray (21) tries to tear loose as other Panthers look for blocks.



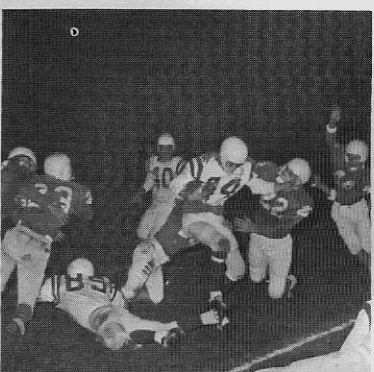
Tom McFarland (11) puts the clamp on opponent holding him to small gain.

IHM	34	Potlatch	0
IHM	34	Priest River	7
IHM	39	Bonnors Ferry	0
IHM	27	Lakeland	0
IHM	39	Post Falls	0

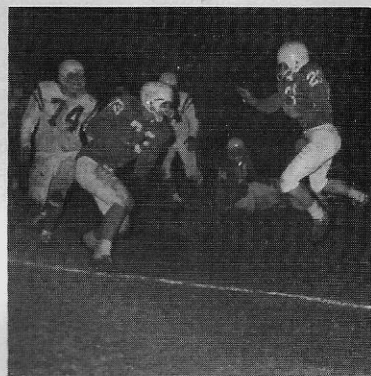


Coach Boyle riding jubilant shoulders after completing perfect season.

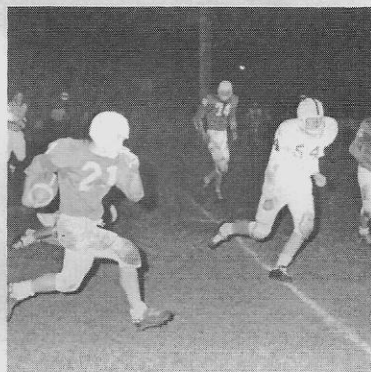
IHM	32	Kootenai	0
IHM	27	St. Maries	13
IHM	39	Lakeland	0
IHM	53	DeSales	6



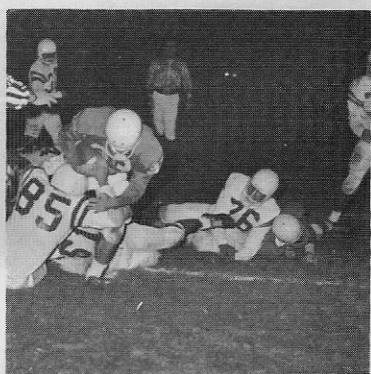
A group of Panthers makes typical IHM "gang" tackle.



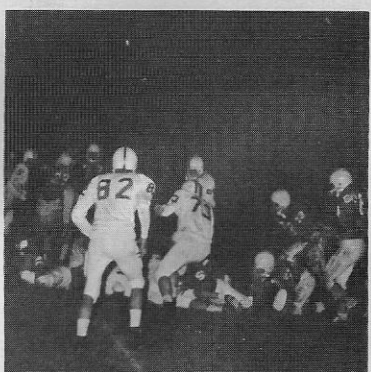
Pat Gray (25) pauses in mid-air while Pat Miller (73) prepares to block.



Mike Gray (21) turns on the speed for a big gain.



Ed Mihelich (33) drives into end-zone leaving jumble of tacklers in his wake.

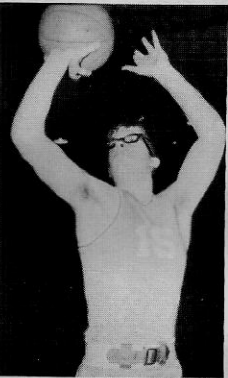


Panther defense stands alert after smashing foe to the turf.

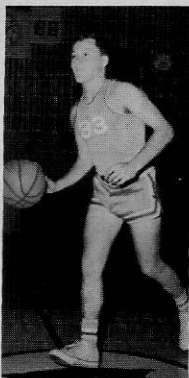
Basketball



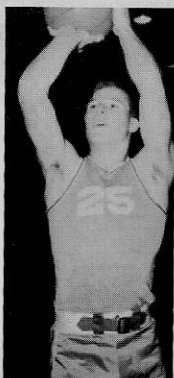
1968 Panther Varsity, with eight returning lettermen from the 1967 State Champion Squad, compiled a season record of 19 wins and 1 loss, the best record in the history of IHM.



Tom McFarland



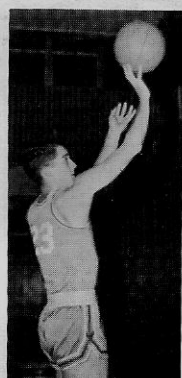
Larry Riplinger



Ed Mihelich



Gary Williams



Bob Elgee



Paul Fromm



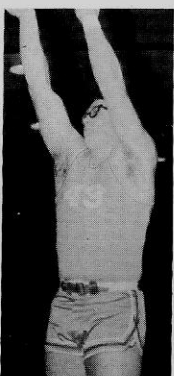
Jim Riplinger



Jeff Norton



Chris Jacobson



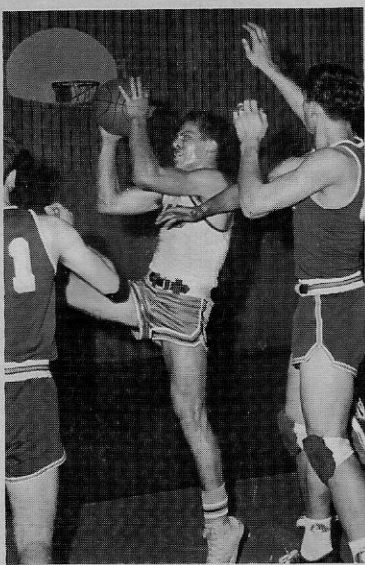
Jim Giesa



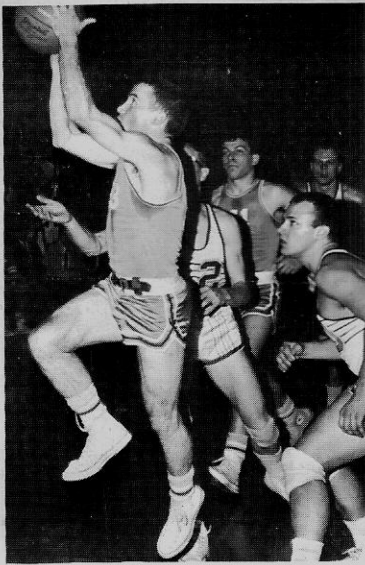
Mike Gray



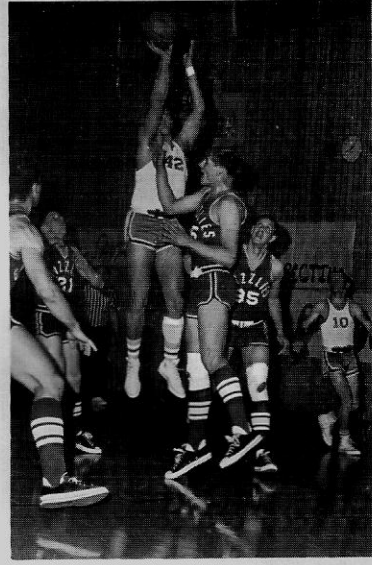
Pat Gray



Chris Jacobson (40) comes down hard with a rebound.

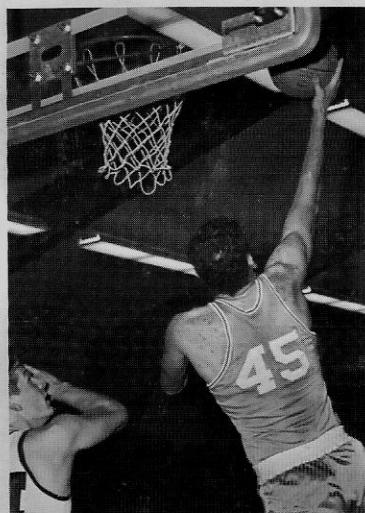


Mike Gray (13) flies through the air for a driving shot.



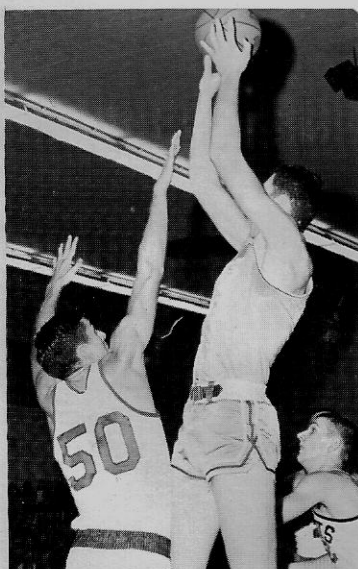
Jim Giesa (42) goes high in the air for jump shot.

IHM	55	Newport	34
IHM	70	Wallace	54
IHM	54	Kootenai	52
IHM	75	Lakeland	48
IHM	57	Newport	50
IHM	66	Freeman	49
IHM	63	East Valley	61
IHM	63	St. Maries	52
IHM	61	Bonnors Ferry	41
IHM	46	Potlatch	42

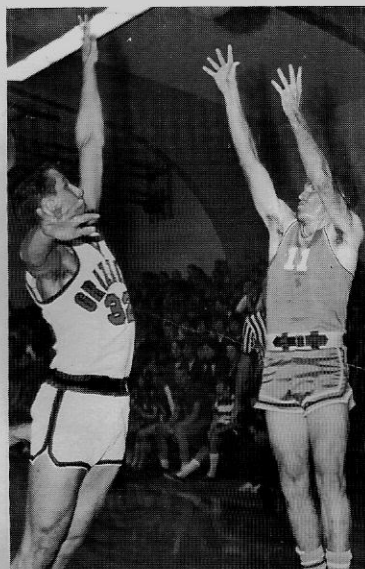


Paul Fromm (45) banks one in.

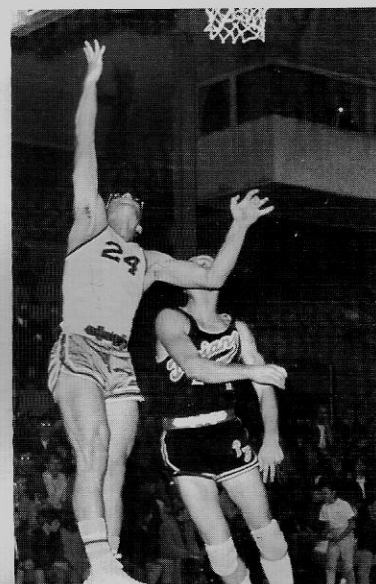
IHM	70	Priest River	41
IHM	65	Post Falls	63
IHM	69	Lakeland	47
IHM	64	Kootenai	57
IHM	50	St. Maries	54
IHM	91	Bonnors Ferry	51
IHM	93	Priest River	64
IHM	76	Post Falls	65
IHM	74	Wallace	66
IHM	98	Potlatch	46



Paul Fromm (45) drops jump shot over the top of would-be defender.



Pat Gray (11) launches one of his long jumpers.



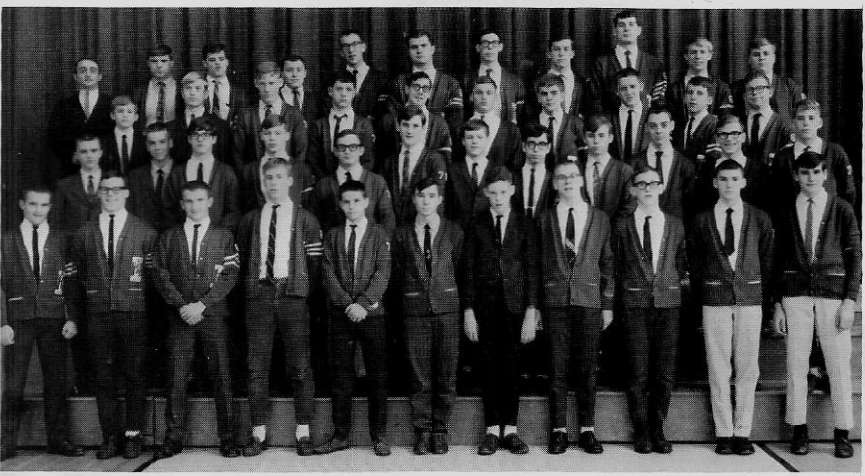
Ed Minelich lays up a cripple for an easy two points.



The J. V. Basketball Team compiled a record of 13-7 during the season under the able coaching of Dave Boller.



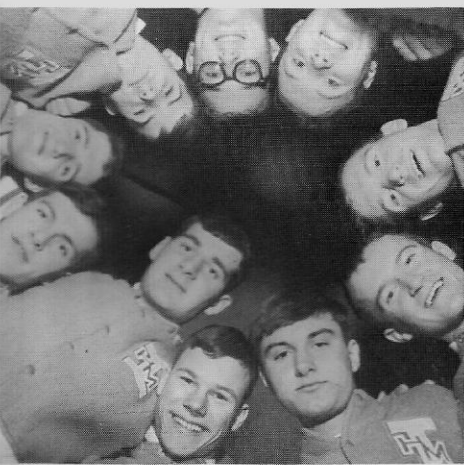
The Freshman Basketball Team had hustle and spirit during the season. The team was coached by Gene Boyle.



IHM's track team, in its initial season, finished second in the district and third in regional. Its mile relay team placed fifth; Pat Gray placed third in the state track meet.

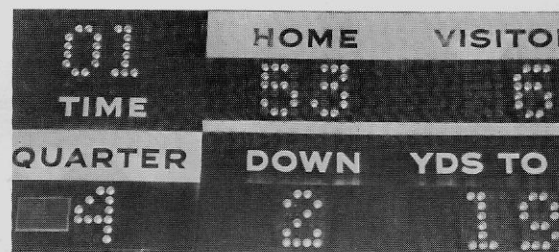


The Panther cross-country team was led by Ron Douglas who finished 84 in an Inland Empire race.



The Senior basketball players looked down on everybody this season.

The scoreboard (right) tells story of visitors to IHM.



Patrons

ALBERTSON'S
ATHLETIC ROUND TABLE
BAILEY OIL COMPANY
BANK OF IDAHO
BB'S PHARMACY
BENEFICIAL FINANCE COMPANY
BRADY'S SHOE SERVICE
CAMPBELL'S HARDWARE
CAROUSEL
CLARK'S JEWELRY
COEUR D'ALENE CREAMERY
COEUR D'ALENE IGA
COEUR D'ALENE TIRE
COVE BOWL
MR. ROBERT M. CROWLEY
CY'S MEATS
DAIRY DELIGHT
EAGLES
ERICKSON'S UPHOLSTERY
EVERGREEN FLORAL
FASHIONETTE
FIRST FEDERAL SAVINGS AND LOAN
FLOYD'S CAMERA CENTER
FRENCH CLEANERS
FROSTOP DRIVE-IN
GRIDLEY INVESTMENT COMPANY
GRIDLEY'S MEN'S STORE
HALL PLUMBING AND HEATING
IDAHO FIRST NATIONAL BANK

JOHNNY'S RICHFIELD
LAKE CITY LANES
LAKE CITY RADIO AND TV
LAKEVIEW COURT AND GROCERY
LEADER PRINTING
LES SCHWAB TIRES
LIGHTHOUSE SPORTING GOODS
MARC SU BEAUTY SALON
MARIE'S CAFE
MCFARLAND REALTY
MID TOWN VARIETY
MODERN DRUG CENTER
MUSIC CENTER
ONE-HOUR MARTINIZING
PANHANDLE INSURANCE
PENNEYS
PEPSI COLA BOTTLING COMPANY
ROBIDEAUX MOTORS INC.
S & H GREEN STAMPS
SPOKANE ELECTRONICS
SPORTSMAN'S ROOST
STANDARD OIL DISTRIBUTORS
SUNSET HEIGHTS BUILDING SUPPLY
VAN'S CREAMERY
WASHINGTON WATER POWER COMPANY
WILMA'S CAFE
WOODCOCK'S DRUG STORE
YATES FUNERAL HOME