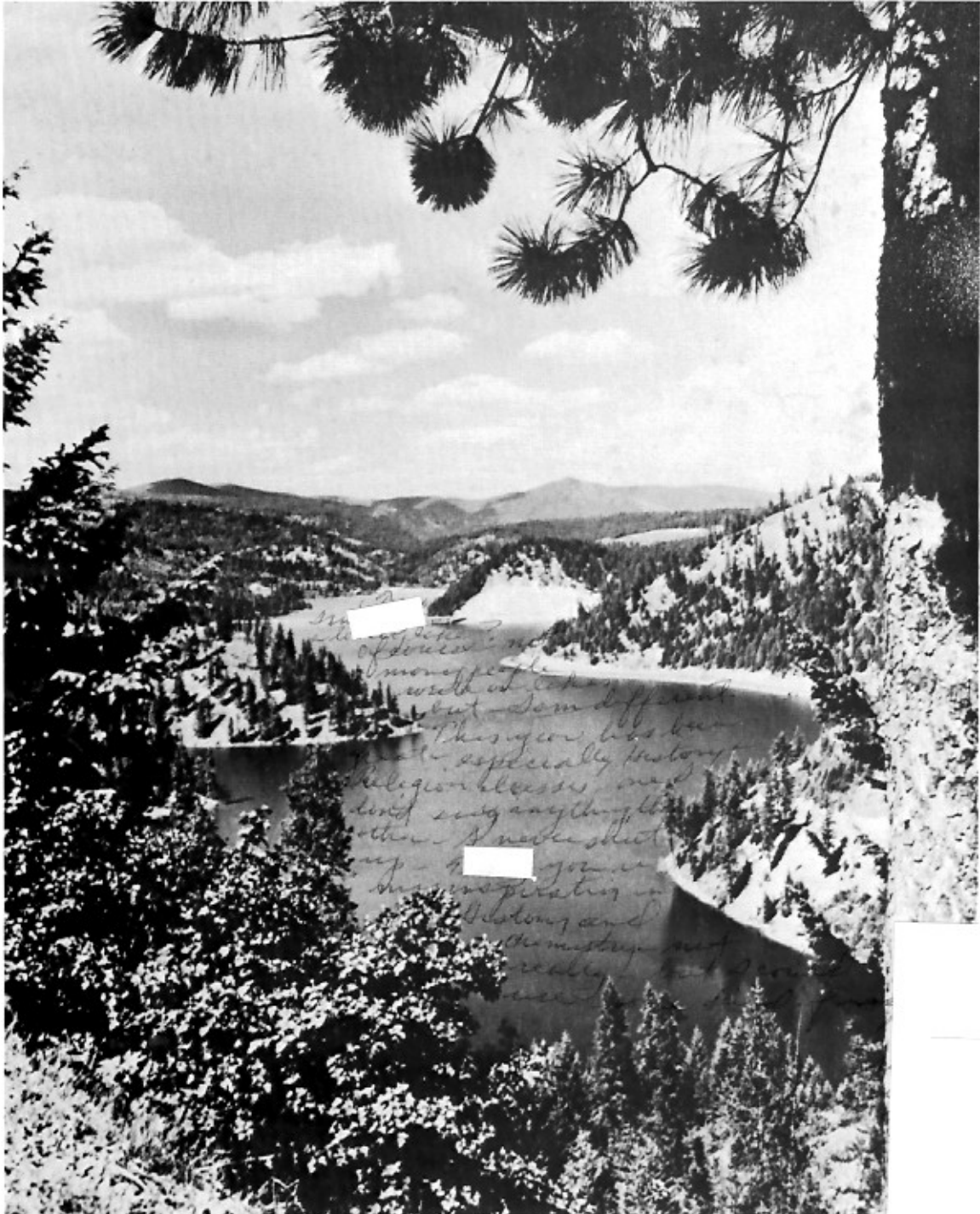




LE COEUR

# LE COEUR 1967

## IMMACULATE HEART OF MARY HIGH SCHOOL



**LAKE COEUR D'ALENE, COEUR D'ALENE, IDAHO**

## **POPE PAUL VI**

Pope Paul is a man of grave wisdom, deep intelligence, and sincere piety. Physically, he is strong-featured and self-disciplined.

Presiding over the final session of the Second Vatican Council, Pope Paul has met with the exhausting responsibility of shaping the future of the Catholic Church. In these times of change and liberal interpretation, Paul the VI, with his unequalled combination of humility and austerity, has kept papal authority intact. Not only has he retained the obedience of the world's Catholics, but his holiness and genuine concern for all mankind has captivated the respect of many non-Catholics as well.



# Medication



SISTER M. AVELINA, I.H.M.  
Principal, 1961-1967

"Let whatever be acquired  
through human means be acquired  
humbly, and let anyone who is  
instructing another pass on to him  
whatever he has received without  
haughtiness or grudging."

-- St. Augustine

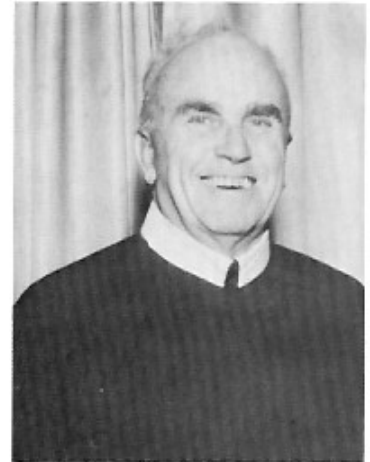
# CLERGY



Rev. W. Brogley C. Ss. R.



Rev. D. Debolt C. Ss. R.  
Pastor



Rev. E. Jennings C. Ss. R.



Rev. G. Katherine C. Ss. R.



Most Rev. Sylvester Treinen  
Bishop of Boise



Rev. B. Hopkins C. Ss. R.



Rev. W. Cleary C. Ss. R.



Rev. T. Lafey



Bro. Raymond Neubert

# Faculty



Mrs. Anne Miles  
Physical Education



Sister Avellina  
Principal

Mrs. Marie Krider  
Librarian



Mr. John Millheisler  
Business Math  
Bookkeeping  
Mechanical Drawing



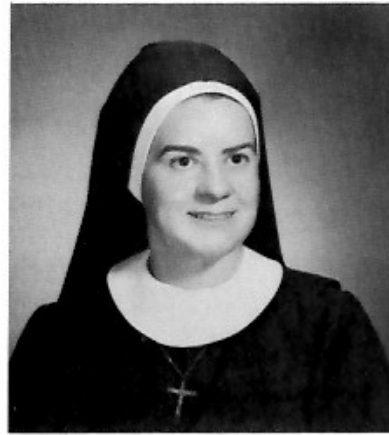
Sister Aloysia  
Music

Mr. Gene Boyle  
Advanced Math  
Algebra I  
Algebra II  
Science I  
Physical Education





Sister Alphonsa  
 Sophomore Homeroom  
 Music Appreciation  
 Latin I  
 Latin II  
 French I  
 French II



*H  
 net  
 It's  
 Tears  
 Be g*

Sister Philip  
 Sophomore Homeroom  
 English II  
 English III  
 Religion II

*Art  
 Sister M. Philip, S.N.M.*



Sister Beatrice  
 Senior Homeroom  
 Religion IV  
 Science  
 Biology  
 Chemistry  
 Geometry



Sister Rosina  
 Freshman Homeroom  
 Religion III  
 English I  
 English IV  
 Homemaking  
 Science

*God bless  
 you and  
 be good!  
 Sister M. Alphonsa  
 S.N.M.*



Sister Mariel  
 Freshman Homeroom  
 Religion I  
 English I  
 Typing I  
 Typing II

*God's  
 gift to  
 you!  
 God bless you!  
 Sister Mariel*



Sister Philip Neri  
 Junior Homeroom  
 Religion III  
 World History  
 American Government  
 American History

*Be  
 K.  
 n*

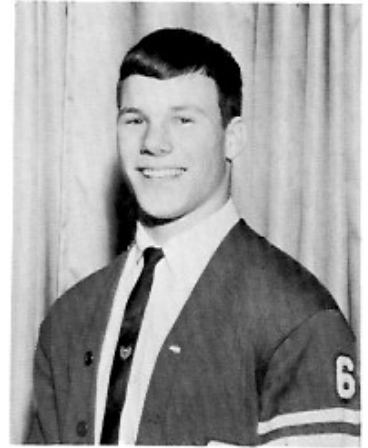




James Rarick -- President



Sister M. Philip -- Moderator



Edward Mihelich -- Vice-President



## STUDENT COUNCIL



Lynne Gebhart -- Secretary



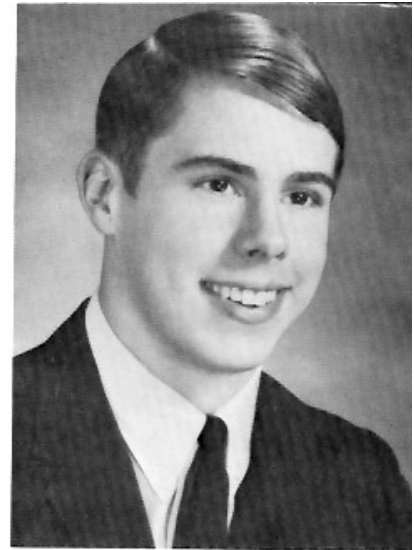
Margaret Riplinger -- Treasurer

# Seniors

'67



JAMES HOFMEISTER  
Class Officer 4  
National Honor Society 4  
Student Council 4  
Le Coeur Staff 4  
Glee Club 2, 3, 4  
Squires 1  
Lettermen's Club 3, 4  
Football 3  
Golf 1, 2, 3, 4



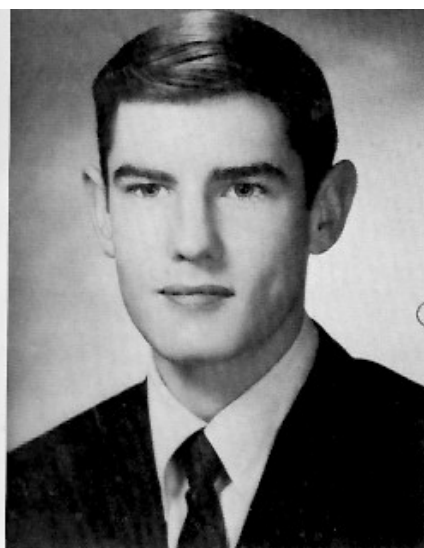
ROBERT MCFARLAND  
Class Officer 1, 2, 4  
National Honor Society 4  
Student Council 3  
Glee Club 1, 2, 3, 4  
Squires 1, 2  
Press Club 1, 2, 3, 4  
Lettermen's Club 4  
Football 1, 2, 3, 4  
Basketball 1, 2, 3, 4  
Baseball 1, 2, 3, 4  
Track 3, 4  
Elks Leadership Award (3rd place) 4

LINDA BLESSING  
Transfer: Coeur d'Alene H. S. 3  
Coeur d'Alene, Idaho  
Class Officer 1, 4  
National Honor Society 4  
Le Coeur Staff 4  
Pep Club 1, 3, 4  
Vocation Club 1, 3  
Junior Miss Pageant 4  
Homecoming Queen 4



LESLIE FRAIJO  
Class Officer 4  
Le Coeur Staff 4  
Press Club 4  
Pep Club 1, 2, 4  
Math Club 3  
Girls' Sports Club 3  
Ski Club 4  
Homecoming Princess 4  
Junior Prom Princess 3  
Junior Miss Pageant 4  
Cheerleader 4





MARK BALLANTYNE  
 Class Officer 1  
 National Honor Society 4  
 Press Club 3  
 Glee Club 2, 3, 4  
 Math Club 3  
 Squires 1, 2  
 Golf Club 1, 2, 3, 4  
 Chess Club 1

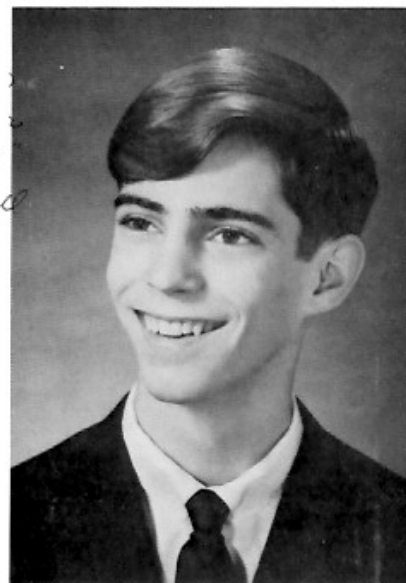
DIANE CHASE  
 National Honor Society 4  
 Le Coeur Staff 4  
 Press Club 4  
 Glee Club 1, 2, 3, 4  
 Pep Club 1, 2, 3, 4  
 Drill Team 2, 3  
 Girls' Sports Club 3  
 PEMM 4  
 Cheerleader 4



PHYLLIS BAUMAN  
 National Honor Society 4  
 Student Council 4  
 Sodality 4  
 Press Club 3, 4  
 Laurel Staff 3, 4  
 Le Coeur Staff 4  
 Glee Club 1, 2, 3, 4  
 Pep Club 1, 2, 3, 4

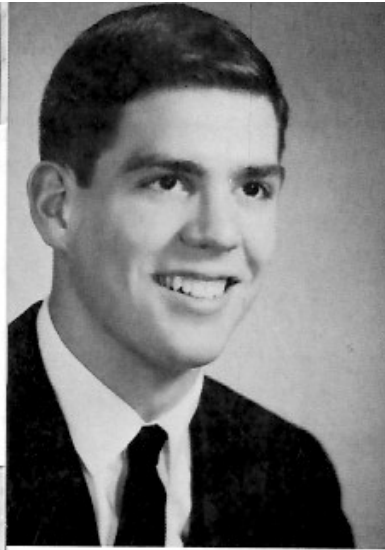


STEPHEN BOWSER  
 Student Council 4  
 Sodality 2  
 Glee Club 1, 2, 3, 4  
 Math Club 1, 3  
 Squires 1, 2  
 Baseball 1

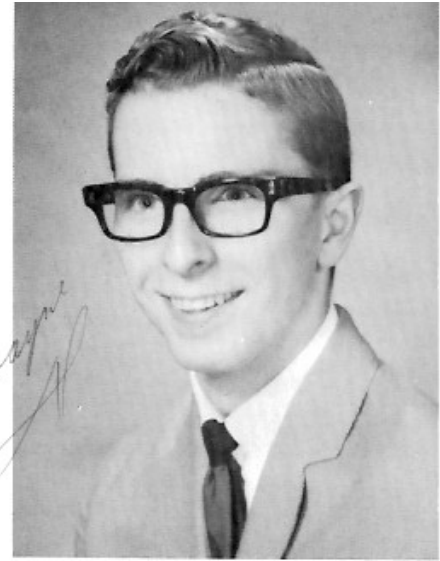


ROBERT DELYEA  
 Class Officer 1  
 Student Council 2, 4  
 Sodality 4  
 Glee Club 1, 2, 3, 4  
 Squires 1, 2  
 Football 1, 2  
 Basketball 2  
 Ski Club 4  
 Elks Leadership Award  
 (2nd place) 4

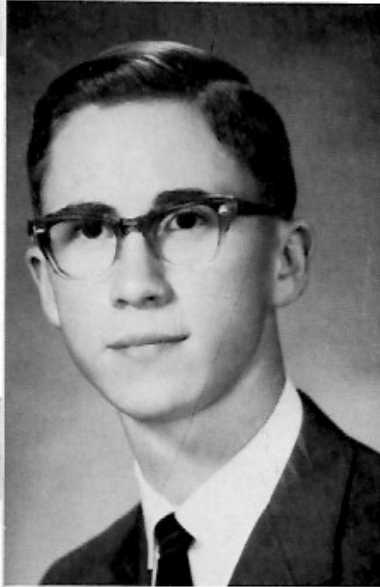




STEPHEN DOLAN  
 Sodality 1, 2, 3, 4  
 Press Club 2, 3, 4  
 Laurel Staff 2, 3, 4  
 Le Coeur Staff 4  
 Glee Club 3, 4  
 Math Club 3  
 Boy's State 3  
 Lettermen's Club 2, 3, 4  
 Football 4  
 Basketball Manager 1



DWAYNE DUNBAR  
 Glee Club 3, 4  
 Squires 2, 3  
 Chess Club 2

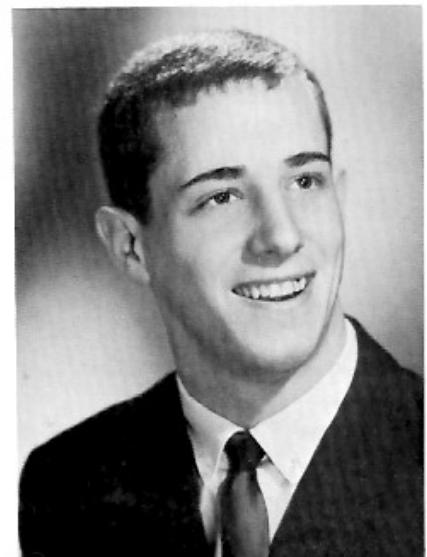


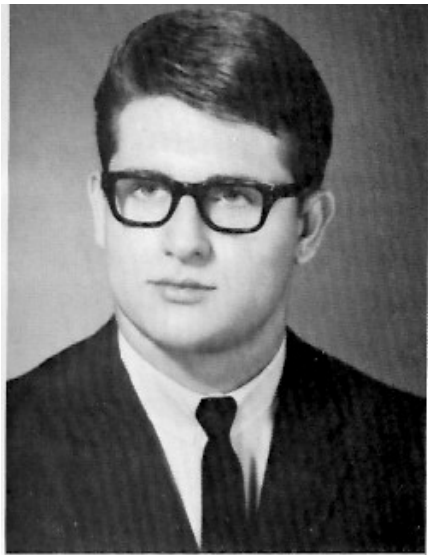
JOSEPH ERICKSON  
 National Honor Society 4  
 Student Council 3, 4  
 Editor, the Laurel 3, 4  
 Le Coeur Staff 4  
 Chess Club 2  
 Math Club 3  
 Boys' State 3  
 Lettermen's Club 2, 3, 4  
 Football 3, 4  
 Baseball Manager 1  
 Baseball 2

PATRICK GIESA  
 Glee Club 3, 4  
 Squires 1, 2  
 Ski Club 4



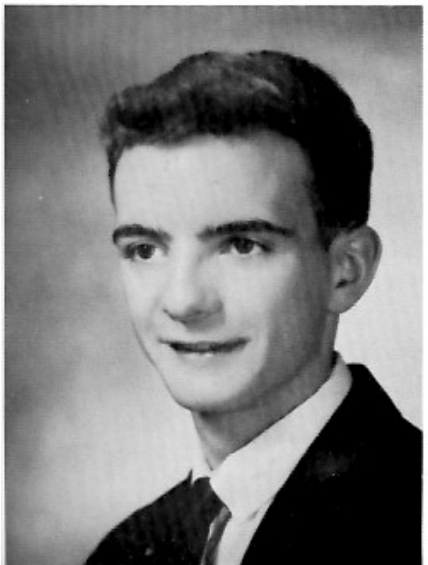
LYNNE GEBHART  
 Class Officer 3  
 National Honor Society 4  
 Student Body Secretary 2, 4  
 Vocation Club 1, 2, 3  
 Press Club 2  
 Le Coeur Staff 4  
 Glee Club 2, 3, 4  
 Pep Club 1, 2, 3, 4  
 Girls' State 3  
 Junior Prom Queen 3





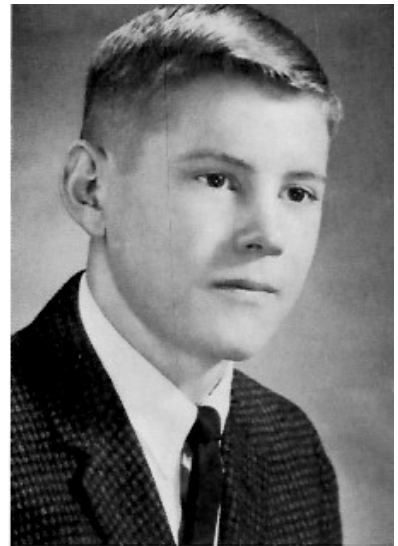
STANLEY GRYGNY  
 Glee Club 3, 4  
 Squires 1  
 Lettermen's Club 3, 4  
 Football 3, 4  
 Basketball 1  
 Track 3, 4  
 All-Panhandle 3  
 All State 4

RICHARD JACOBSON  
 Glee Club 2, 3, 4  
 Chess Club 2  
 Squires 1, 2  
 Football 1  
 Basketball 3, 4  
 Basketball Manager 2  
 Baseball 2, 3, 4  
 Track 3, 4  
 Tennis 4

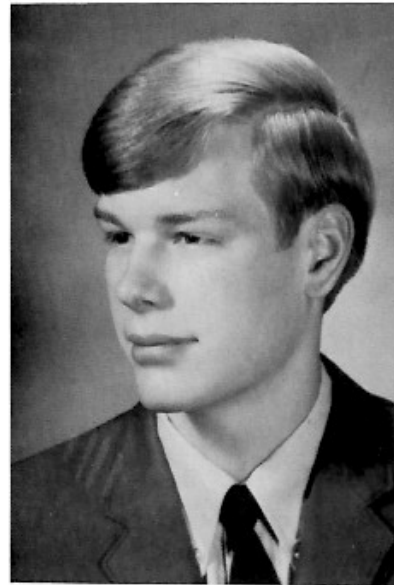


*Rick*

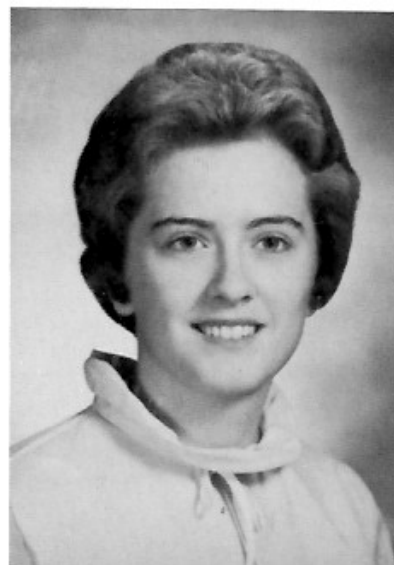
PATRICK HARRINGTON  
 National Honor Society 4  
 Le Coeur Staff 4  
 Glee Club 1, 2  
 Chess Club 2  
 Boys' State Alternate 3  
 Football 4



ROBERT HUETTER  
 Golf Team 1, 2, 3, 4  
 Lettermen's Club 3, 4  
 Basketball 1

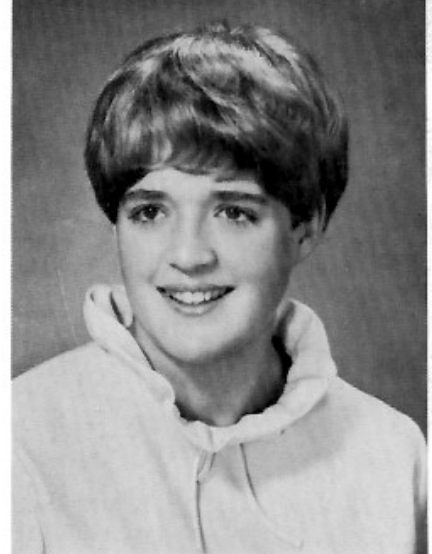


SHEILA JOHNSTON  
 Transfer; Coeur d'Alene H. S. 2  
 Coeur d'Alene, Idaho  
 National Honor Society 4  
 Press Club 2, 4  
 Le Coeur Staff 4  
 Glee Club 2  
 Math Club 2, 3  
 Legion of Mary 1, 2, 3

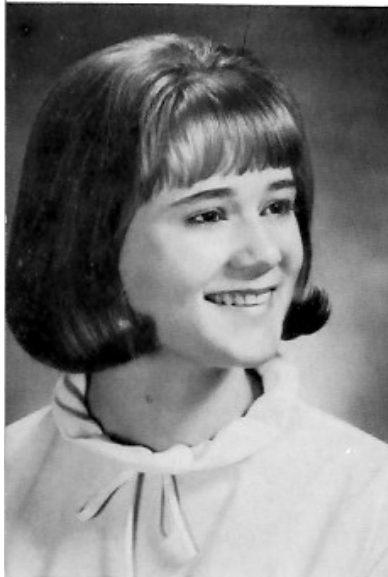




VIRGINIA KARST  
Sodality 4  
Vocation Club 3  
Press Club 4  
Le Coeur Staff 4  
Glee Club 1, 2, 3, 4  
Pep Club 1, 2, 3, 4  
Girls' Sports Club 3  
Homecoming Princess 4



KRIS KING  
Vocation Club 1, 2, 3  
Le Coeur Staff 4  
Legion of Mary 2  
Tennis Club 4  
Pep Club 1, 2, 3, 4  
Girls' Sports Club 3  
PEMM 4  
Ski Club 4

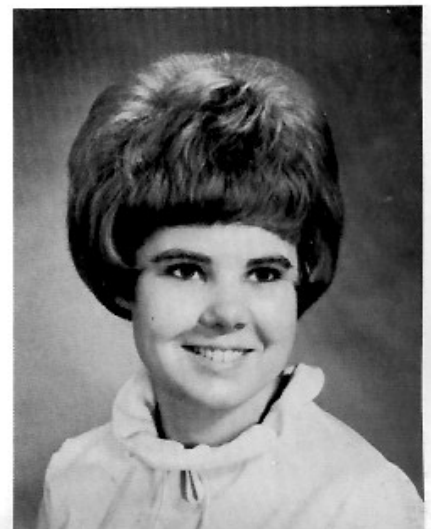


JENNIFER KIRSCH  
Class Officer 2  
Press Club 4  
Glee Club 1, 2, 3  
Pep Club 1, 2, 3, 4  
Cheerleader 3, 4  
Girls' Sports Club 3

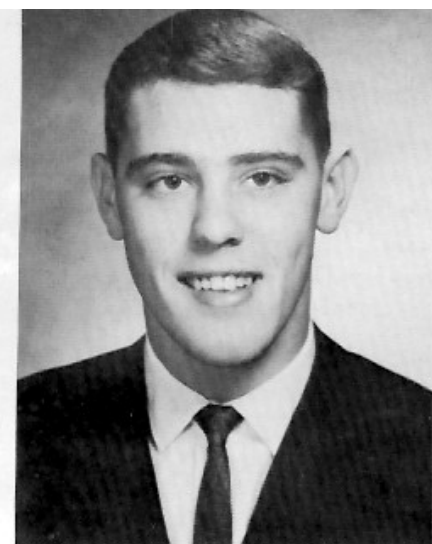
CHRISTINE KOONTZ  
Class Officer 3  
Vocation Club 1, 2, 3  
Press Club 2, 4  
Co-Editor Le Coeur 4  
Glee Club 1, 2, 3, 4  
Pep Club 1, 2, 3, 4



RICHARD KOM  
Glee Club 2, 3, 4  
Squires 2, 3







ROBERT MACDONALD  
Laurel Staff 3, 4  
Le Coeur Staff 4  
Press Club 3, 4  
Glee Club 3, 4  
Lettermen's Club 2, 3, 4  
Baseball Manager 1

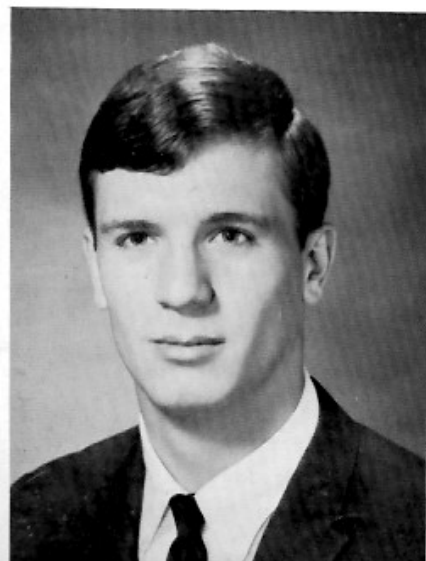


PATRICIA MATHES  
Transfer: Coeur d'Alene H. S. 4  
Coeur d'Alene, Idaho  
Sodality 4  
Press Club 4  
Le Coeur Staff 4

LAWRENCE LENZ  
Glee Club 3, 4  
Lettermen's Club 1, 2, 3, 4  
Football 1, 4  
Basketball 1  
Baseball 1

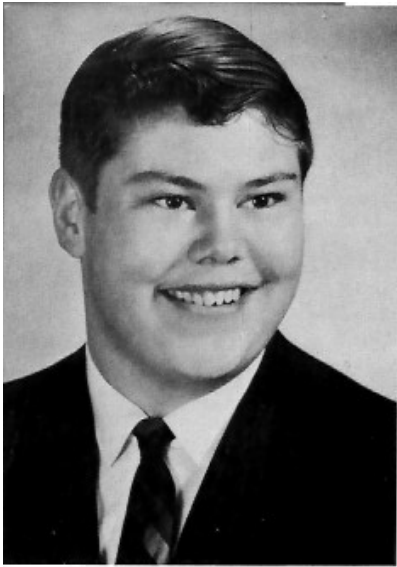


GERALD NEESER  
Squires 1  
Lettermen's Club 1, 2, 3, 4  
Football 1, 2, 3, 4  
Basketball 1, 2, 3  
Ski Club 4

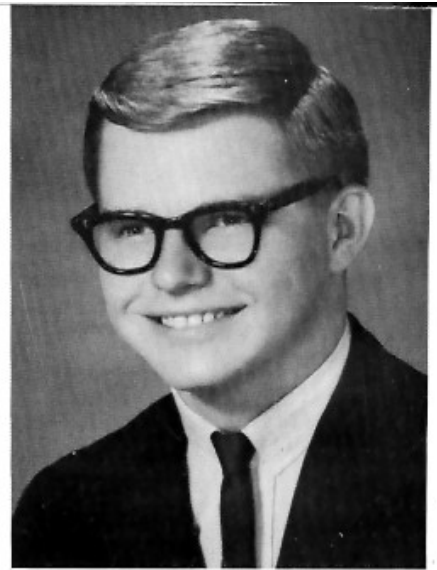


NANCY NOVAK  
Transfer: Marian Central H. S. 2  
Crystal Lake, Illinois  
National Honor Society 4  
Student Council 3  
Laurel Staff 3, 4  
Le Coeur Staff 4  
Press Club 3, 4  
Glee Club 2, 3, 4  
Vocation Club 3  
Pep Club 2, 3, 4  
Girls' Sports Club 3  
Cheerleader 3, 4





JAMES NUTT  
Squires 1, 2  
Baseball 1

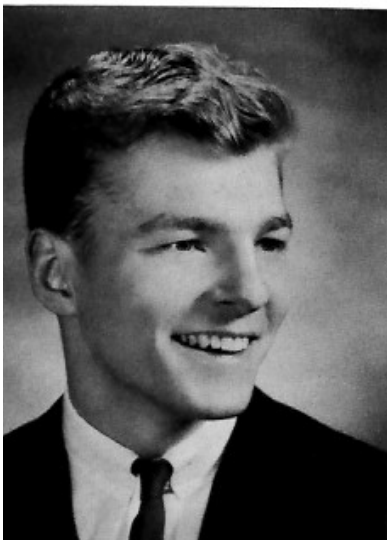


DANNY PETERSON  
Glee Club 2, 3, 4  
Football 3, 4  
Baseball 2  
Track 3, 4

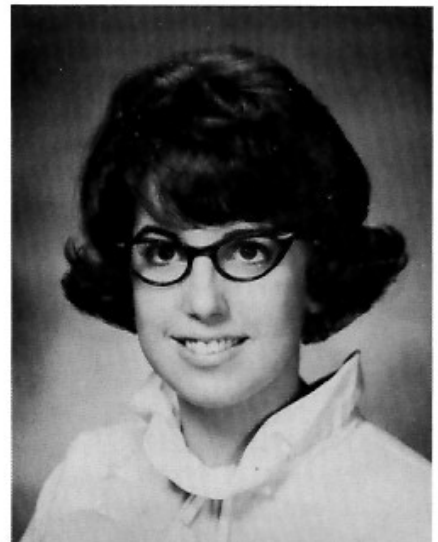


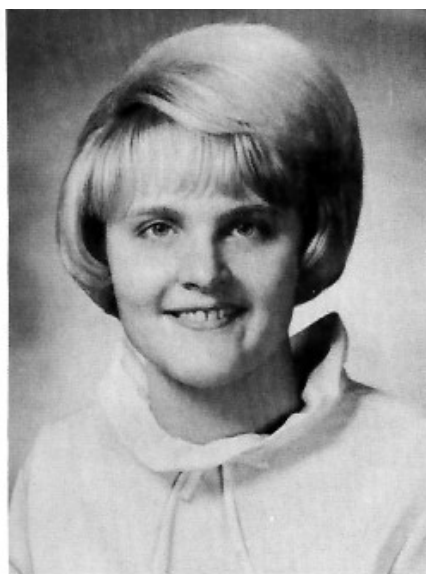
VICTORIA PETERSEN  
Le Coeur Staff 4  
Glee Club 1, 2, 3  
Legion of Mary 1  
Pep Club 1, 2, 3  
Girls' Sports Club 3

PATRICIA RANSOM  
Student Council 3  
Vocation Club 3  
Press Club 4  
Le Coeur Staff 4  
Glee Club 1, 2, 3, 4  
Math Club 3  
Legion of Mary 1, 2  
Pep Club 1, 2, 3, 4  
Girls' Sports Club 3  
Girls' State Alternate 3

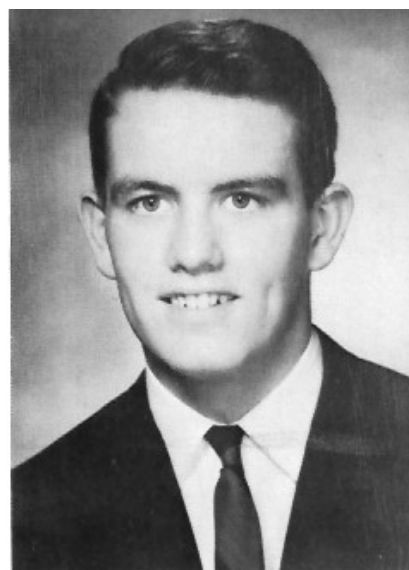


STEVE POPIEL  
Basketball 1, 2  
Squires 1



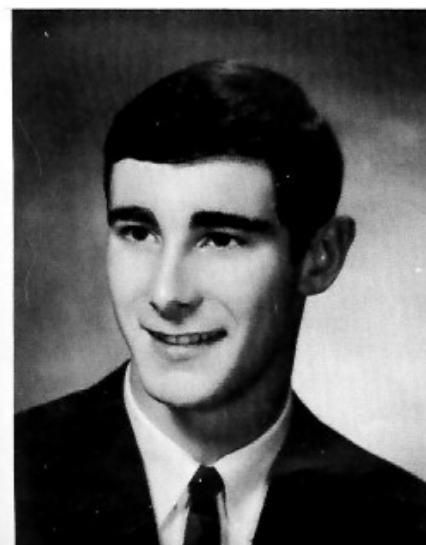


MARGARET RIPLINGER  
Class Officer 1, 2  
National Honor Society 4  
Student Body Treasurer 4  
Press Club 4  
Le Coeur Staff 4  
Glee Club 1, 2, 3, 4  
Legion of Mary 1, 2  
Pep Club 1, 2, 3, 4  
Girls' State Alternate 3

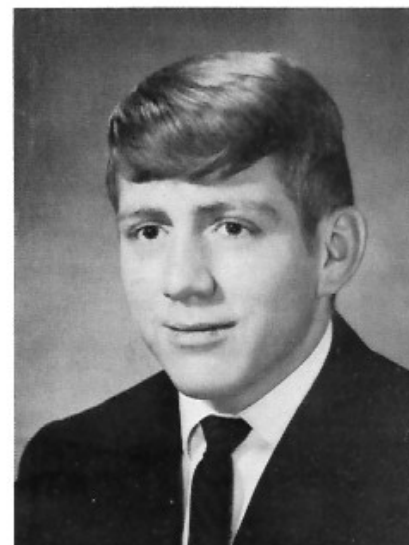


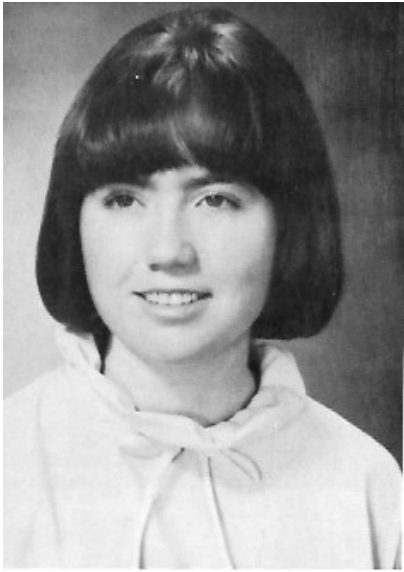
JAMES RARICK  
Student Body President 4  
Class Officer 1, 2, 3  
National Honor Society 4  
Boys' State Alternate 3  
Sodality 4  
Press Club 2  
Lettermen's Club 2, 3, 4  
Football 1, 2, 3, 4  
Basketball 1, 2, 3, 4  
Baseball 1, 2, 3, 4

JAMES RUSSELL  
Student Council 2  
Press Club 2  
Glee Club 1, 2, 3, 4  
Squires 1  
Tennis 4  
Lettermen's Club 2, 3, 4  
Basketball 1, 2, 3, 4  
Track 3, 4

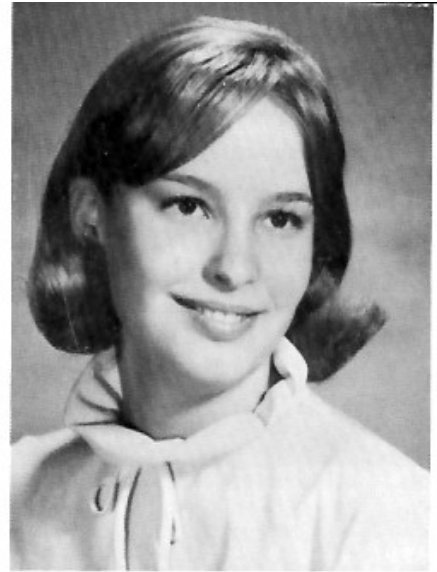


FREDERICK SCHAFFNER  
Student Council 3  
Sodality 4  
Glee Club 1, 2, 3  
Squires 1  
Lettermen's Club 2, 3, 4  
Football Manager 3, 4  
Basketball Manager 2, 3, 4  
Baseball Manager 2, 4  
Baseball 1



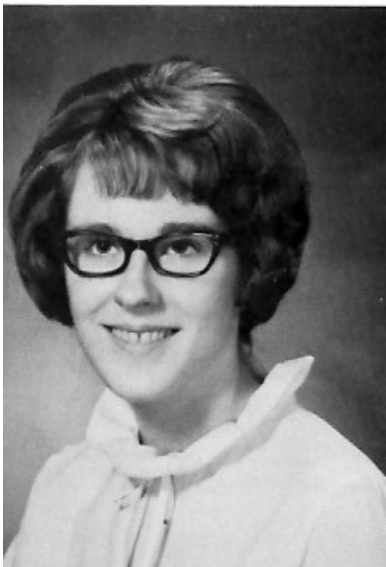


JANICE SMITH  
Class Officer 3  
National Honor Society 4  
Student Council 3, 4  
Press Club 2, 4  
Co-Editor Le Coeur 4  
Pep Club 1, 2, 3, 4  
Girls' State 3  
Junior Prom Princess 3  
Elks Leadership Award (2nd place) 4



CATHERINE THOMPSON  
Glee Club 1, 2, 3, 4  
Pep Club 1, 2, 3

PATRICIA TIPTON  
Transfer: St. Gertrude's Academy 3  
Cottonwood, Idaho  
National Honor Society 4  
Sodality 3, 4  
Press Club 4  
Le Coeur Staff 4  
Glee Club 3, 4  
Pep Club 3, 4  
Homemaker of Tomorrow 4



KATHLEEN TREICHEL  
Student Council 3  
Sodality 4  
Vocation Club 3  
Press Club 4  
Laurel Staff 4  
Le Coeur Staff 4  
Glee Club 1, 2, 3, 4  
Math Club 3  
Pep Club 1, 2, 3, 4  
Cheerleader 3, 4  
Girls' Sports Club 3  
PEMM 4  
Drill Team 2





Twelve-Year Seniors -- Last Row: Steve Dolan, Jim Hofmeister, Pat Giesa, Bob Huetter, Jim Rarick, Stan Gryguy. Second Row: Bob MacDonald, Steve Popiel, Rick Jacobson, Bob Delyga, Jim Russell, Bob McFarland. Third Row: Dick Kom, Fred Schaffner, Pat Harrington, Dwayne Dunbar, Skip Sand, Joe Erickson. Front Row: Leslie Fraijo, Kathy Treichel, Kris King, Peggy Riplinger, Diane Chase, Jan Smith, Pat Ransom.



Bob McFarland placed as a finalist in the National Merit Scholarship Contest, while Sheila Johnston and Jim Hofmeister received letters of commendation.



Participating in the 1967 Junior Miss Pageant were Vicki Petersen, Hayden Lake, and Sheila Johnston, Linda Blessing, and Leslie Fraijo, Coeur d'Alene.



Junior Prom 1966 -- Queen Lynne Gebhart and Princesses Janice Smith and Leslie Fraijo are shown with their escorts Gene Hanson, Jim Rarick, and John Hartnett.



Representing I.H.M. at Gem Boys State and Syringa Girls State were Joe Erickson, Janice Smith, Lynne Gebhart, and Steve Dolan.



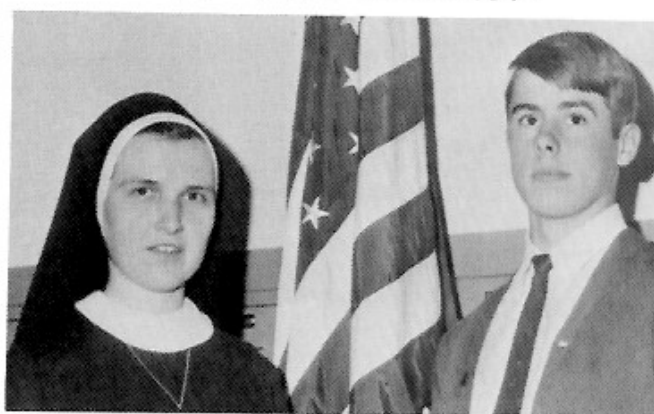
Sister Rosina watches proudly as Jim Hofmeister receives first place award in the Lions Peace Essay Contest. Sheila Johnston was runner-up in the competition.



Homecoming 1966 -- Fred Schaffner and Linda Blessing reigned as king and queen, while their court consisted of Jim Russell, Leslie Fraijo, Ginny Karst, and Stan Grygny.



Pat Tipton was chosen Betty Crocker Homemaker of the Year on the basis of a test given to High School Senior girls across the nation.



Sister Philip Neri poses with Bob McFarland, one of six finalists in the United States Senate Youth competition. Robert also won the state competition in the 1967 VFW Voice of Democracy oratical contest, entitling him to a five-day trip to Washington, D.C.

# Underclassmen



# JUNIOR CLASS



Robert Elgee  
President



Michael Gray  
Vice-President



Mary McFarland  
Secretary



Patricia Miles  
Treasurer



Chris Jacobson  
Representative



Patrick Gray  
Representative



Donna Anderson  
Colleen Baker



Terry Bauman  
Virginia Bowser



Allen Brown  
Deborah Castellan



Connie Chase  
David Diemert



Todd Erickson  
John Fiscus



Paul Fromm  
Susan Galles



Paul Gebhart  
James Giesa



Joan Jaeger  
Gloria Karst







Patricia Karst  
Donagene Knight



Lance Koep  
Ronald Koep



Janice Lovell  
Judith Martin



Thomas Martin  
Ellen Matson



Thomas McFarland  
Sally McMurray



Edward Mihelich  
Patrick Miller



Kenneth Montreuil  
Lloyd Ogden



Terry PuFahl  
Susan Ransom



Lawrence Riplinger  
Clifford Singer



Julie Solomon  
Barbara Sonnichsen



Colleen Sullivan  
Marcia Swank



Janis Valente  
Gary Williams

# SOPHOMORE CLASS



James Diemert  
President



Bernadette Brooten  
Vice-President  
Representative



Donna Shively  
Treasurer



Mary Bauman  
Secretary  
Representative



Robert Blessing  
Darlene Brueggeman



Joanne Brueggeman  
Patrick Carper



Michael Chase  
Michael Daly



Barbara Daugherty  
Lyn de Barbrie



William Dickenson  
James Dolan



Ronald Douglas  
Mary Eichhorn



Anne Erickson  
Laura Fraijo



Laura Gebhart  
Lola Guimond



James Hagen  
Ruth Harrington





Laura Jo Hocevar  
 Donalyn Holovka  
 Judith Jacobson



Mary Joyner  
 Kathleen Keane



Charles Kieper  
 Melanie Koep  
 Thomas Kom



Nancy Lake  
 Anthony Larsen



Charlotte Lovell  
 Gerard Mason  
 Brian McPoland



Michael Miller  
 Lynette Moore



Gayla Newell  
 Linda Novak  
 Mary O'Malley



Joyce Ohnemus  
 James Poitevin



James Riplinger  
 Theresa Roche  
 Gail Roy



Cathryne Sand  
 Donald Shannon



Marie Thompson  
 Sharon Trudell  
 Geoffrey Wachter



Jack Wardian  
 David Yeager

# FRESHMAN CLASS



Joseph Foredyce  
President



Maureen McCammon  
Vice-President



Susan O'Connell  
Secretary  
Representative



Terine Spinazza  
Treasurer



Maureen Hartnett  
Representative



Gary Ackerman  
Marlene Anderson  
Dale Andrews



John Arney  
John Boller



Lorraine Bowser  
Lynette Brown  
Lynda Carter



Cheryl Coleman  
Sherry Fiscus



Rebecca Fraijo  
Stephen Gerger  
Mark Giovanelli



Myra Hawley  
Mortimer Huetter



Michael Jessick  
Terry Johnston  
George Jost



Bonnie Karst  
Patrick King





Siegfried Kirchner  
Bruce Koester



Melanie Koontz  
Kristina Kryger  
Pamela Kurdy



Rudy Marmon  
Daniel Martin



Walter Matson<sup>#</sup>  
Kirk Miller  
Susan Miller



Jane McFarland  
John McFarland



Robert Moate  
Terry Moate  
Janice Ohnemus



Randy Pringle  
Ronald Pufahl



Dennis Purdy  
Robert Riggs  
Patricia Riplinger



Clarice Robertson  
Dennis Smith



Marie Sneed  
Julie Valente  
Janet Van de Mark



Clara Wallace  
Beverly Walson



Joette Wardian  
Robert Weber  
Carol Wetmur



Junior Prom -- 1966

Last of the red-hot mamas.



Yo Ho Ho and a Bottle of Rum!

It's the American Way.



Just hanging around.





Jim Hofmeister presents Sister Avellina with a gift from the Student Body on her feast day.

Thanksgiving, and once again Mr. Millheisler leads the students in showing their appreciation to the sisters.



Santa's helpers know the real meaning of Christmas.



Mayor Gardner addresses the Government class.

You too can have a physique like this in two short weeks.



The Halloween dance sponsored by the Sodality was a great success thanks to the Sodality, those who attended, and those who performed in the Hootenany.





Seniors act out the Christmas story, while Santa Claus gives goodies to the underclassmen.



"Well, girls?"



Joe Erickson and Steve Dolan at the 1966 Seattle Press Conference.



Sophomores decorate for the Homecoming.



Sodality members hard at work.



Seniors decorate for the Senior Ball, "Somewhere, My Love."



"Advanced What?"



# Activities





# GLEE



Double (Devil's) Quartet +1  
+1 missing -- Larry Lenz.



New noise at IHM. The Pep Band under the direction  
of Sister Alphonsa.



## CLUB



Director Sister Alphonsa and accompanists Ann Erickson and Susan O'Connell.



Girls' Special Group.



Squires: Zealous members of the Junior Knights of Columbus, gather on the rectory lawn between skating parties.



Late into the night the members of the Le Coeur Staff cut, glued, and typed the annual.

Co-Editors of the Le Coeur, Christine Koontz and Janice Smith, laugh merrily at the predicament in which they find themselves.



The ruthless editor of the Laurel, Joseph Erickson and his slaving right-hand man, Steve Dolan.



The fearless members of the Laurel Staff are ready to tear into next month's issue of the paper.

The work of the Press Club won an All-State excellence award at the Moscow Press Conference last spring.





Through the efforts of the Student Council the National Honor Society has been initiated into IHM.



Ski Club -- Snow bunnies and friends.



Tennis the Menace,  
President -- Debbie Castellan



Sodality -- A Little Bit of Heaven.



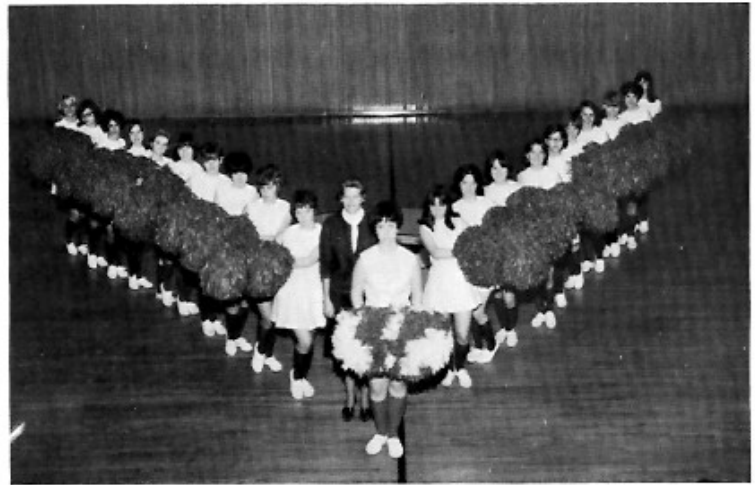
PEMM -- Watch it boys, or we'll mow you down!



J. V. Cheerleaders --  
Ooh-la-la!  
Mary McFarland  
Ellen Matson  
Pat Miles



Really Girls! Hanging ice-cream bars  
out of the bathroom window on strings?  
Varsity Cheerleaders -- Nancy Novak,  
Diane Chase, Kathy Treichel, Jill Kirsch,  
and Leslie Fraijo.

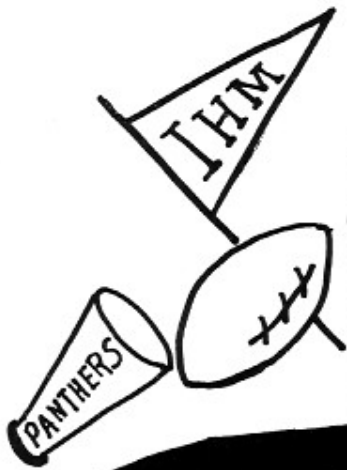


A Flash of Leg and They're Off!  
Mrs. Annie Miles directs the ever-  
improving Drill Team.



Behind every great  
team is a great  
Pep Club.

# Sports



# FOOTBALL 1966



IHM varsity football team members attempt to cover up their disappointment at having to take a few minutes from practice for their picture. The team had an undefeated season, stretching a winning streak to 22 games without a defeat.

	IHM	OPP		IHM	OPP
Potlatch	6	6	Kettle Falls	45	0
Bonnors Ferry	13	0	Kootenai	23	0
St. Maries	20	6	Priest River	34	14
Lakeland	14	13	Newport	30	0
			Post Falls	32	6

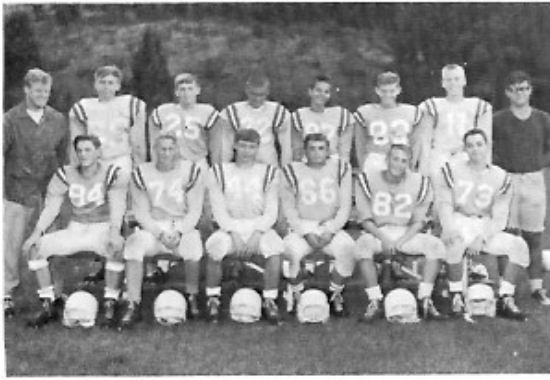


Senior players rejoice after an undefeated football season. FIRST ROW: Paul Sand, Joe Erickson, Fred Schaffner, Manager; Larry Lenz, Pat Harrington, and Coach Gene Boyle. SECOND ROW: Steve Dolan, Bob McFarland, Dan Peterson, Stan Grygny, Jim Rarick, and Jerry Neeser.

Jerry Neeser, Most Valuable Player; Jim Rarick, Most Inspirational Player; and Stan Grygny, All-State Center; were honored at a post-season football banquet.







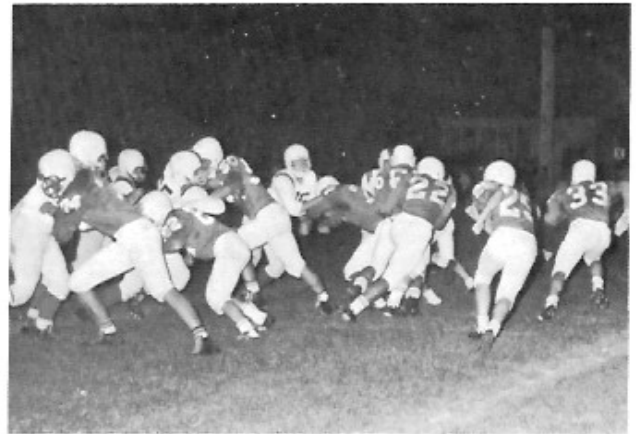
Freshman members of the J.V. football team smile proudly with their coaches, John Jaeger, left; and Bill McFarland.



A big booster to IHM spirit is the 70's club composed of Freshman boys. The club was formed this year, under the direction of Mr. Gene Boyle.



"Aw, fella's, can't we finish our nap? Two Panther defenders seem to be taking it easy but Larry Riplinger (55) and Don Shannon (65) have just knocked a St. Maries halfback out of bounds for a nice loss.



In the last game of the season the Panther line holds the Post Falls Trojans as the IHM backfield executes an end-run or pass play for a gain.

Twenty-six members of the Lettermen's Club step outside of school to reminisce about their last chicken feed.





The varsity basketball team, coached by Gene Boyle, compiled an excellent season record of 16 wins and 4 losses.

	IHM	OPP
Wallace	62	55
Cottonwood	69	53
Cottonwood	55	51
Lakeland	67	41
Wallace	56	79
Medical Lake	51	75
Medical Lake	62	58
St. Maries	52	44
Bonnors Ferry	70	56
Clark Fork	91	41

	IHM	OPP
Priest River	74	55
Post Falls	50	63
Kootenai	50	32
Lakeland	52	31
St. Maries	83	69
Bonnors Ferry	84	41
Kootenai	63	59
Priest River	77	46
Post Falls	46	65
Clark Fork	69	50

Paul Fromm, Panther center, leaps high for two points in the season opener against Wallace



The big fight is on as Panther players scramble for the ball with the Bonnors Ferry Badgers.





Panthers and the Wallace Miners fight to gain control of the ball on the IHM boards.



Coach Boyle offers constructive criticism to the weary Panther players at half time.



Jim Rarick hams it up on the shoulders of Bob McFarland while other senior basketball players, Jim Russell and Rick Jacobson, add their support.

The Junior Varsity showed hard work and determination through a 20 game season.

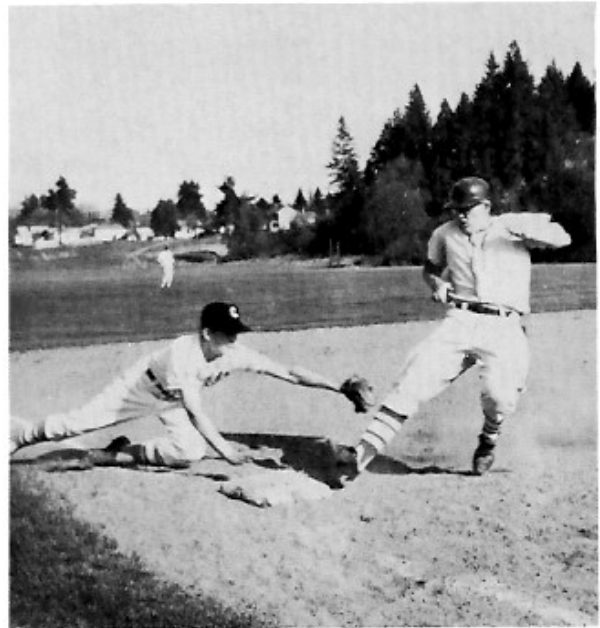




The twelve players on IHM's mighty frosh team suck in a deep breath as Manager George Jost and Coach Boyle palm the ball.



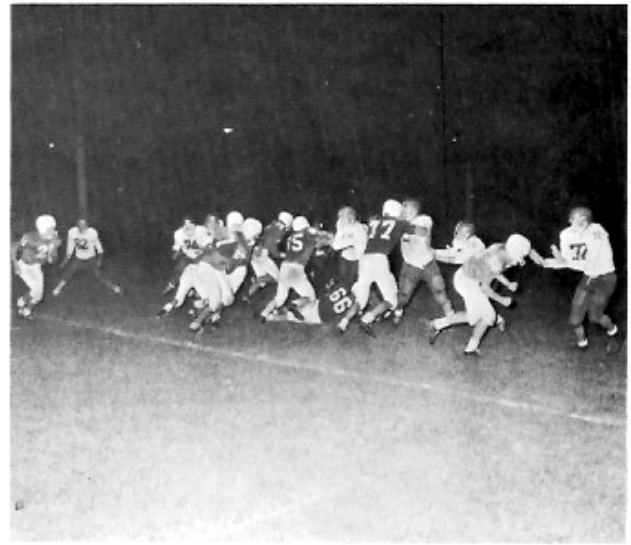
The golf team and prospective members pause to contemplate sand traps and green fairways.



Jim Rarick tries to squeeze his big toe onto the bag for an extra base in a game against the Vikings of Coeur d'Alene High School. The Panthers nine had a most successful season last year compiling a record of 12 wins and 2 losses.



Ed Mihelich looks for an extra base as he rounds first in a Viking-Panther clash at McEuen field.



The big rush is on as the Panther backfield turns on the power against the St. Maries team.

*It's been great  
having you at T.H.M. for  
past year - keep up the  
good work. See you in  
your new Mr. Doyle*

I H M

C  
O  
A  
C  
H



B  
O  
Y  
L  
E

SPORTS

John Miller takes a healthy cut at the ball in the game against New Port.



Mike Gray lays in two points against the Post Falls Trojans in their gym.

# PATRONS

ALBERTSON'S FOOD CENTER  
ALEXANDER'S MOTEL  
ALLEN'S GIFT CENTER & COFFEE SHOP  
ARCTIC CIRCLE  
AURORA MOTEL  
BALL and CUE  
B B's PHARMACY  
BOAT DRIVE INN  
BRODERICK MOTOR COMPANY  
CAMPBELL'S HARDWARE  
CASH and CARRY  
CLARK'S JEWELERS  
COEUR d'ALENE CREAMERY  
COEUR d'ALENE EAGLES  
COEUR d'ALENE PRESS  
COEUR d'ALENE REALTY CO.  
COVE BOWL  
CROLLARD FORD CO.  
MR. ROBERT CROWLEY  
De ARMOND & JOYNER LUMBER CO.  
DIAMOND NATIONAL CORPORATION  
ENGLISH FUNERAL CHAPEL  
EVERSON'S JEWELRY  
FIRST FEDERAL SAVINGS & LOAN  
FIRST SECURITY BANK of IDAHO  
    COEUR d'ALENE OFFICE  
FIRST SECURITY BANK of IDAHO  
    SUNSET HEIGHTS OFFICE  
FLOYD'S CAMERA CENTER  
FRENCH CLEANERS  
GARDNER SUPPLY CO.  
GARDNER WELDING SUPPLY CO.  
GENERAL TELEPHONE CO.  
GRIDLEY INVESTMENT  
HALL PLUMBING & HEATING  
HAYDEN LAKE BARBER SHOP  
HAYDEN LAKE BUILDING MATERIALS  
HAYDEN LAKE HARDWARE

HOLLAND MARKET  
IDAHO FIRST NATIONAL BANK MAIN BRANCH  
IDAHO FIRST NATIONAL BANK SHERMAN AVE.  
INLAND MARINE SUPPLY CO  
INTERSTATE TYPEWRITER CO.  
DR. L. V. KENNEDY  
KLOTZ DRUG STORE  
LAKE CITY LANES  
LAKE CITY MARKET  
LAKE VIEW COURT & GROCERY  
LIGHTHOUSE SPORTING GOODS  
LOUIS GREENHOUSE  
LUKE'S TRANSFER & STORAGE  
MID-TOWN VARIETY  
MODERN DRUG CENTER  
MONTGOMERY WARD  
MR. and MRS. HERB NAGLES  
J. C. PENNEY CO.  
PEPSI-COLA BOTTLING CO.  
PLAZA BARBER SHOP  
POST FALLS LUMBER CO.  
REDMOND'S THRIFT STORE  
REID BROS. TEXACO  
RUNGE FURNITURE CO.  
SAFEWAY  
SHERMAN DRUG STORE  
SONNICHSEN AGENCY, INC.  
SPORTSMAN'S ROOST  
STOCKWELL PAINT STORE  
TOPPER In'N'Out  
UNDY'S FROST TOP  
VOGUE CLEANERS  
WASHINGTON WATER POWER CO.  
WHITELEY GROCERY  
WILMA'S CAFE  
WILSON'S PHARMACY  
WOODCOCK'S PHARMACY  
YATES FUNERAL HOME