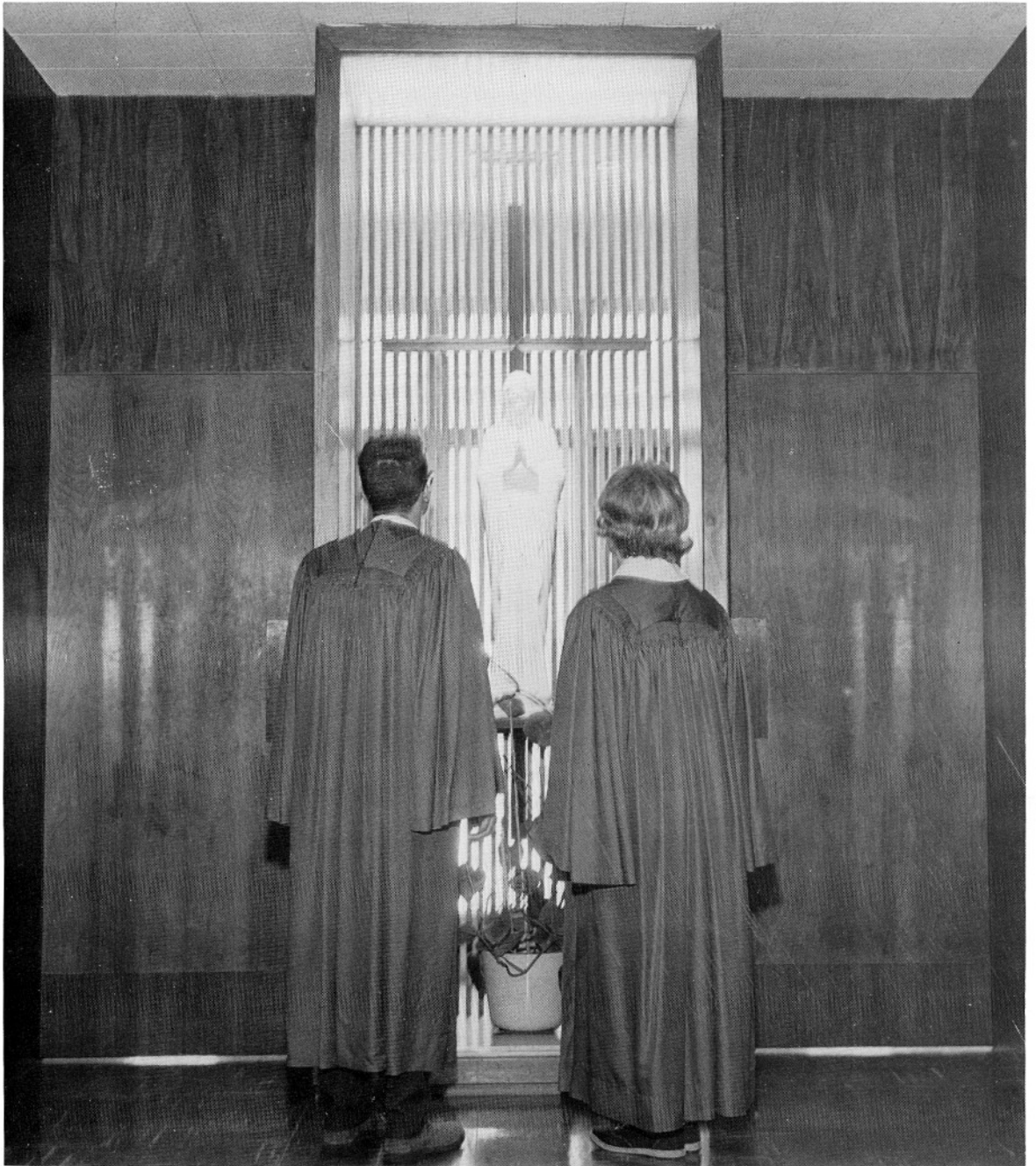


LE COEUR

LE COEUR

1966 copy 7



IMMACULATE HEART OF MARY
ACADEMY

Coeur d'Alene, Idaho

DEDICATION



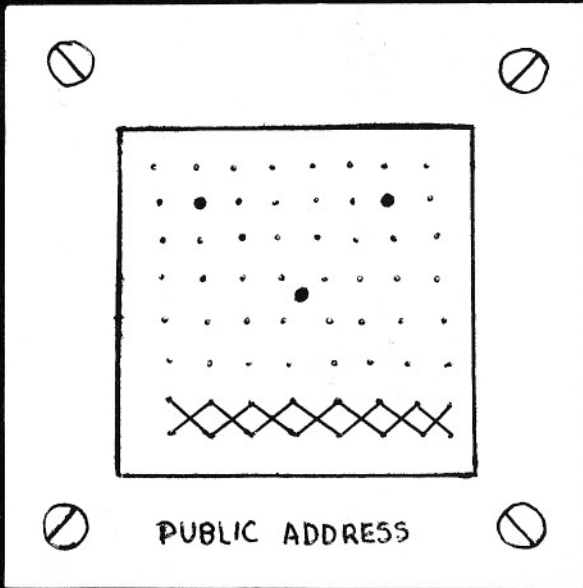
**THE MOST REVEREND SYLVESTER W. TREINEN
BISHOP OF BOISE**

“If we have fear, then we call on another, be he parent, doctor, preacher, friend, neighbor,—but these are limited, for all call on God when we need His help.”

Philip Peter Bittel

The Senior Class of 1966 dedicates the LE COEUR to their beloved Bishop.

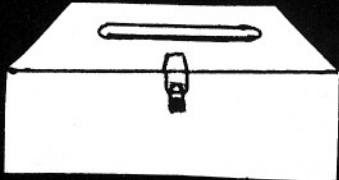
ADMINISTRATION



May I have
your attention
please...

The
Lettermen's
dance will be
a sock hop.

... and furthermore
I think we should
banish ties...



ADMINISTRATION



Left to Right: Brother Raymond Neubert, Father William Brogley, Father Daniel Debolt, pastor; Father Bernard Hopkins, Father William Cleary. The Redemptorist Fathers celebrated their 50th Anniversary this past year. They have served Coeur d'Alene and St. Thomas Parish for 50 years.

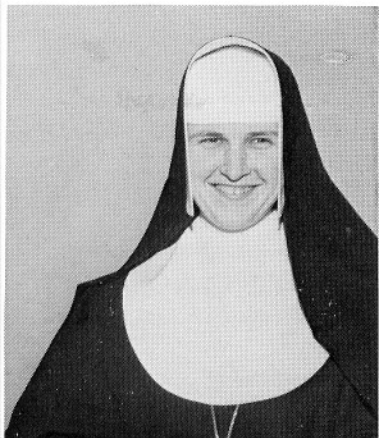


REV. THOMAS LAFEY
Religion IV

SISTER M. AVELLINA
Principal, Latin I



SISTER M. BEATRICE
Senior Advisor
Algebra II, Geometry
Science, Physics
Chemistry, Religion IV



SISTER M. PHILIP NERI
Junior Advisor
American Government
American History
Religion III
World History

SISTER M. ROSINA
Junior Advisor
English III, IV
Homemaking
Religion III
Speech





SISTER M. PHILIP
 Sophomore Advisor
 English I, II
 Algebra I
 Art
 Religion II



SISTER M. ALPHONSA
 Sophomore Advisor
 Latin I, II
 Music, Religion II
 World History
 French I, II



SISTER M. MARIEL
 Freshman Advisor
 English I, Typing I, II
 Shorthand
 Religion I



SISTER M. HARRIET
 Freshman Advisor
 Speech, Latin I, II
 Religion I



MR. EUGENE BOYLE
 Biology
 Algebra I, II
 Advanced Math
 P.E., Coach



SISTER M. ALOYSIA
 Music

MR. JOHN MILLHEISLER
 Bookkeeping I, II
 Mech. Drawing
 Business Math



MRS. LESLIE STEELE
 Physical Education



MRS. NORMAN BAKER
 Librarian



STUDENT COUNCIL



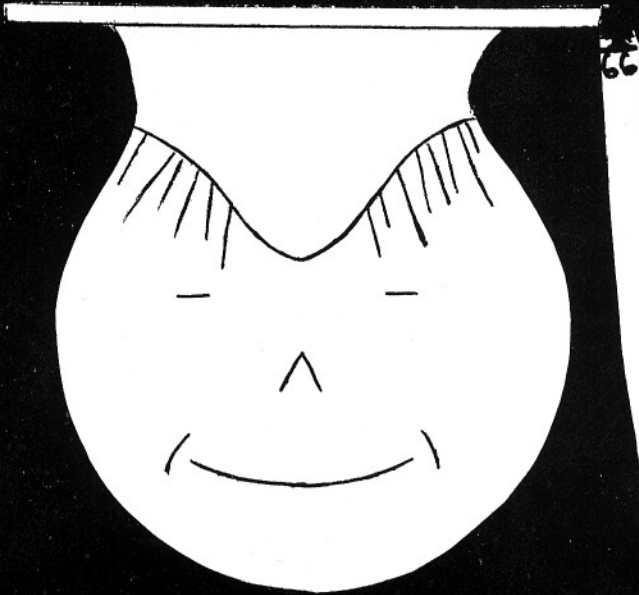
STUDENT COUNCIL OFFICERS are from left to right: Gleta Long, Treasurer; John Hartnett, President, Mike Elgee, Vice-President; Ann Kryger, Secretary.

Student Council promotes campus order, but here's the man who really does the job, Mr. Garvey, alias "Mr. G."

THE VOICE OF THE STUDENTS IN THE SCHOOL, the Student Council, has taken on many projects during their second year in operation. Taking charge of the raising and lowering of the flag, purchasing of the school sport banner and council pins, patrolling the halls and sponsoring dances have been among their major achievements this year.



SENIORS



Really, Sister,
I forgot to...



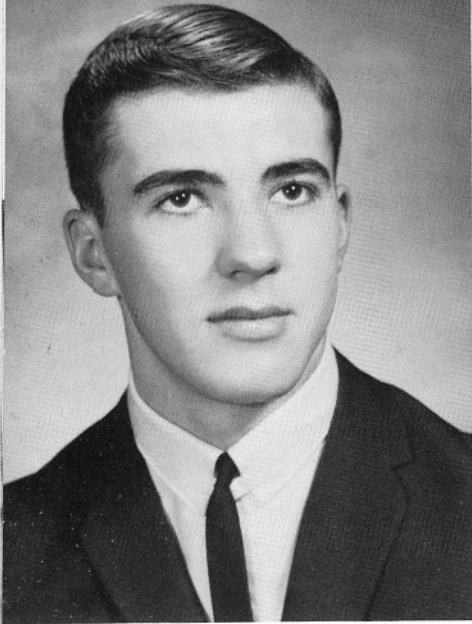
But, Sister Beatrice,
I have to...

It's
Locked!

EXCUSED

ama





JOHN MILLER,
 President
 Class Officer 1,3,4
 Glee Club 4
 Le Coeur Staff 4
 Football 1,2,3,4
 All-Panhandle 4
 All-State 4
 Basketball 1,2,3,4
 Baseball 1,2,3,4
 Letterman's Club 2,3,4
 Boys' State 3
 Student Council 4



MICHAEL PETERS,
 Vice-President
 Class Officer 1,4
 Glee Club 1,2,3,4
 Press Club 1,2,3
 Sodality 1,2
 Chess Club 2,3
 Football 1,2,3,4
 All-Panhandle 4
 All-State 4
 Most Inspirational Player 4
 Baseball 3,4
 Letterman's Club 1,2,3,4
 Boys' State Alternate 3
 Student Council 3,4

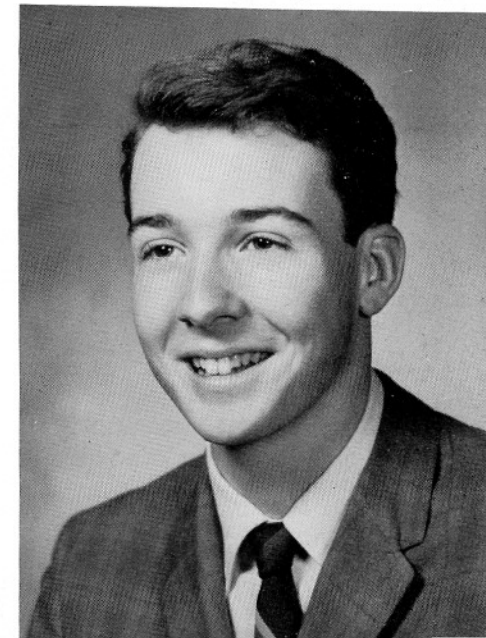


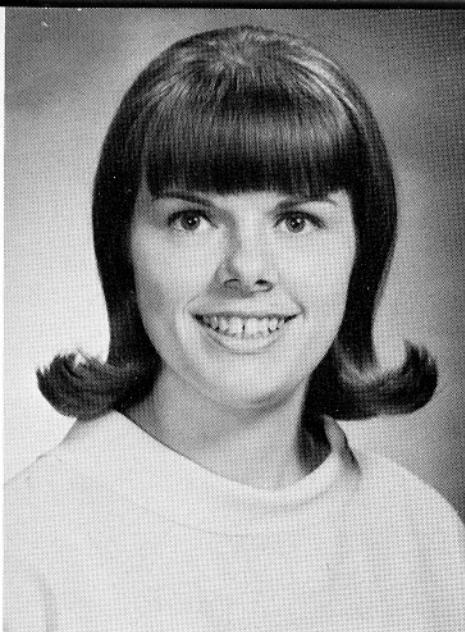
SHARON WACHTER,
 Secretary
 Class Officer 1,4
 Glee Club 1,2,3,4
 Press Club 1,3,4
 Pep Club 1,2
 Laurel Staff 3,4
 Le Coeur Staff 4
 Vocation Club 2,4
 Legion of Mary 1
 Cheerleader 3,4
 Junior Prom Princess 3
 Homecoming Queen 4
 Junior Miss, Personality
 Girls' Sports Club 4
 Girls' State 3

JOHN WAKEFIELD,
 Representative
 Class Officer 2,3,4
 Glee Club 1,2,4
 Press Club 4
 Le Coeur Staff 4
 Golf Team 2,3,4
 Letterman's Club 4
 Student Council 3,4

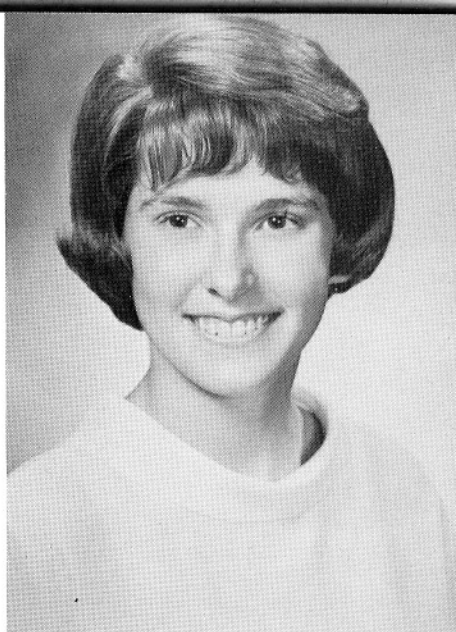


LINDA STOCKWELL,
 Treasurer
 Glee Club 2
 Pep Club 1,2,3,4
 Drill Team 3,4
 Vocation Club 3,4
 Legion of Mary 3,4
 Girls' Sports Club 4





SALLY ARNEY
Glee Club 1,2,3,4
Press Club 3,4
Pep Club 1,2,3,4
Laurel Staff 3,4
Le Coeur Staff 4
Vocation Club 3,4
Legion of Mary 1
Chess Club 2,3
Homemaker of Tomorrow 4
Girls' Sports Club 4

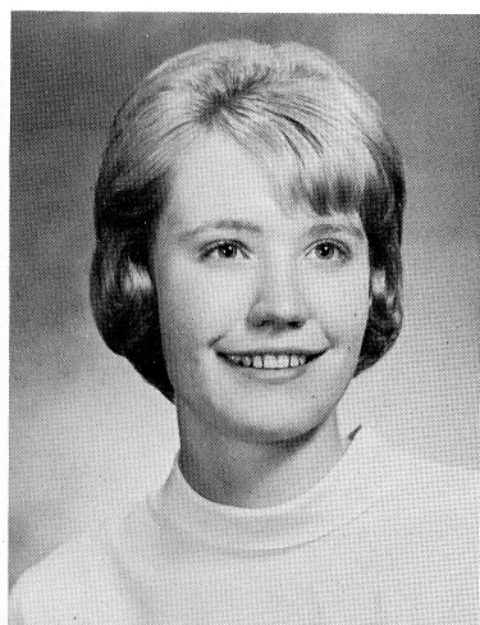


ROBIN HULTNER,
Representative
Class Officer 3,4
Glee Club 1,2,3,4
Press Club 3,4
Pep Club 1,2,3,4
Laurel Staff 3,4
Le Coeur Staff 4
Sodality 3, 4
Vocation Club 3
Chess Club 1,4
Math Club 2,3
Junior Miss Pageant 4
Girls' State 3
Girls' Sports Club 4
Student Council 3,4

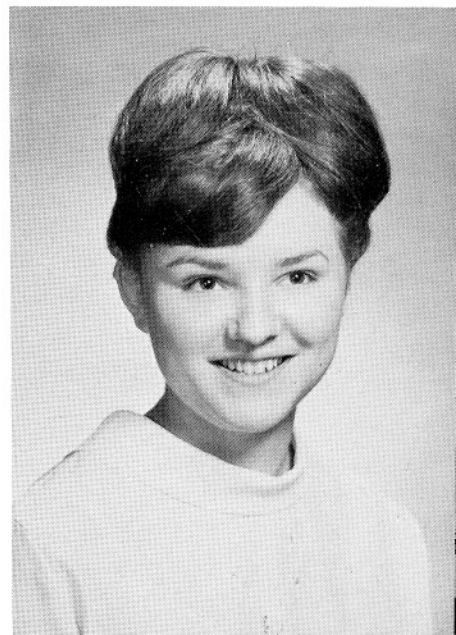
DAVID BOLLER
Class Officer 1
Football 1
Basketball 1,2,3,4
Baseball 1,2,3,4
Letterman's Club 1,2,3,4

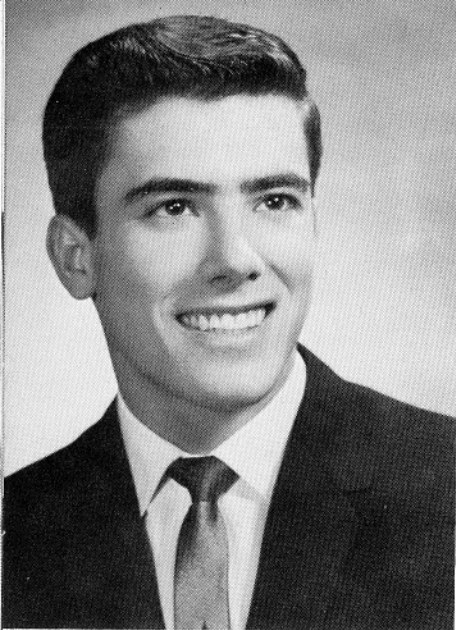


MARY BROPHY
Glee Club 1,2
Pep Club 1,2,3,4
Girls' Sports Club 4

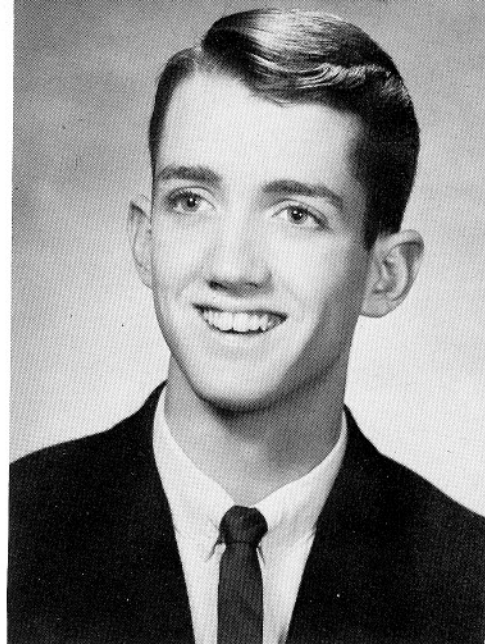


MARIANNE CIERYCA
Glee Club 1,2
Pep Club 1,2,3,4
Math Club 1
Girls' Sports Club 4

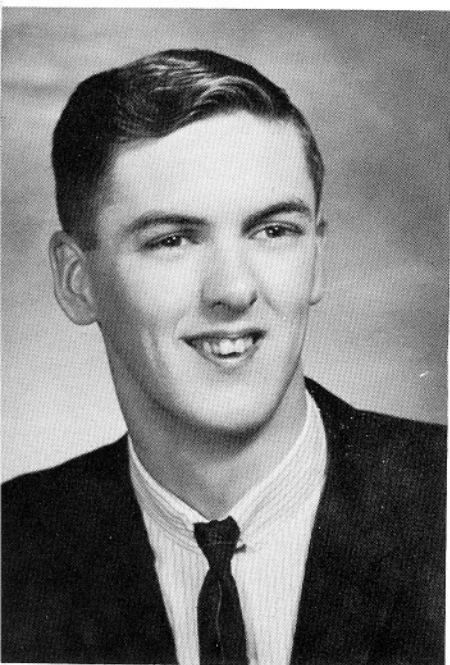




RICKARD DIEMERT
 Transfer: Holy Redeemer 3
 Oakland, California



MICHAEL ELGEE
 Transfer: George Cannon 3
 Midway Island



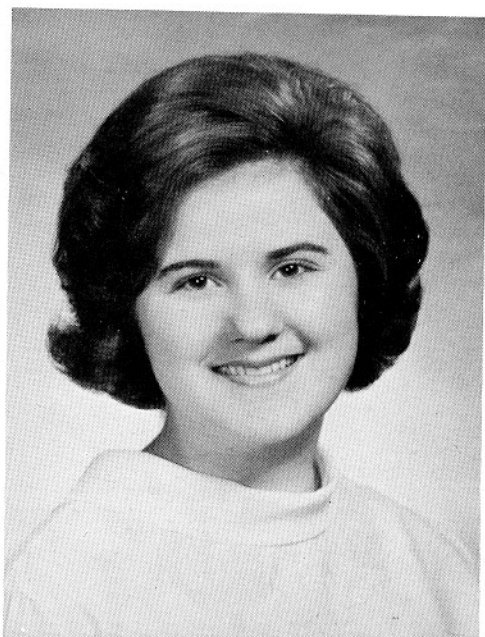
EDWARD DUNN
 Football 1,2
 Basketball 1

STUDENT BODY
 VICE-PRESIDENT

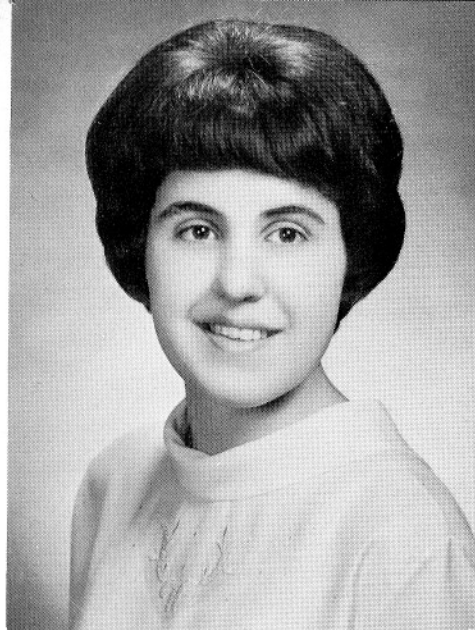
- Chess Club 3
- Glee Club 4
- Football 3,4
- All-Panhandle
- Basketball 3,4
- Golf 3,4
- Letterman's Club 3,4



VIRGINIA FRAIJO
 Glee Club 1,2,3,4
 Press Club 3,4
 Pep Club 1,2,3,4
 Drill Team 3,4
 Laurel Staff 3,4
 Le Coeur Staff 4
 Chess Club 3
 Girls' Sports Club 4

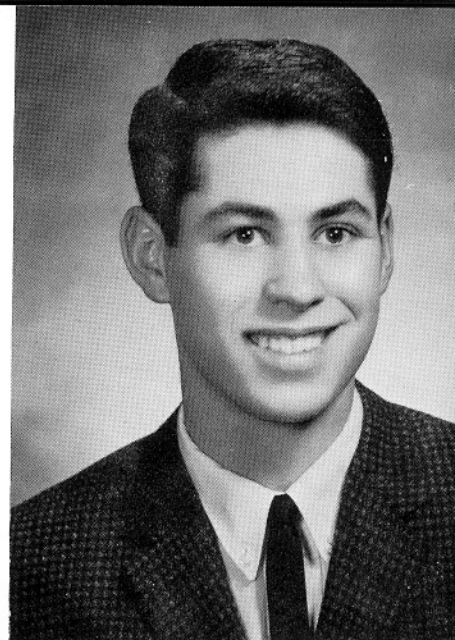


HALDEEN GALES
 Glee Club 2,3,4
 Pep Club 2,3,4
 Press Club 3
 Chess Club 3
 Girls' Sports Club 4



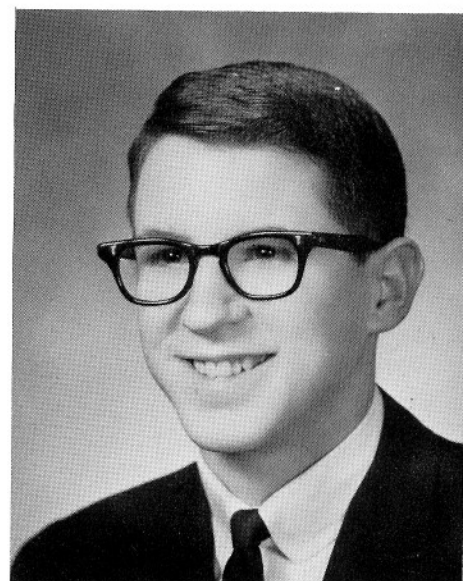
MARY KAYE HARRINGTON

Glee Club 2
Pep Club 1,2,3,4
Girls' Sports Club 4



MICHAEL HARRINGTON

Glee Club 2,3
Chess Club 2
Boys' State Alternate 3

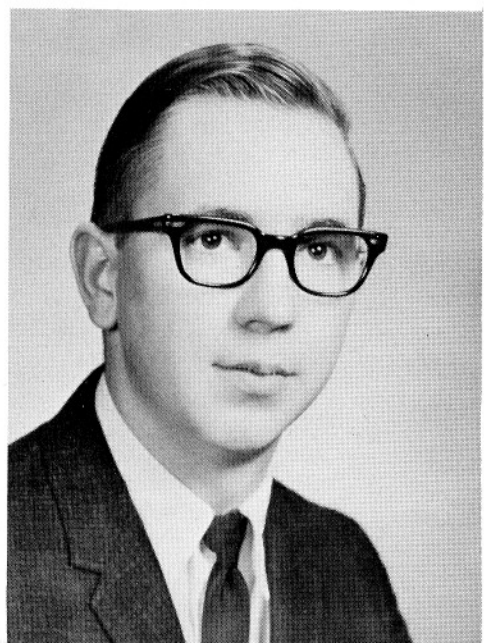


JERALD JAEGER

Transfer: Ritzville H.S. 3
Ritzville, Washington
Glee Club 4
Press Club 4
Le Coeur Staff 4
Chess Club 3
Football 4
Basketball 4
Baseball 3
Golf 4
Letterman's Club 4

LAWRENCE JACOBS

Football 1,2
Basketball 2
Baseball 1,2,3,4
Letterman's Club 3,4

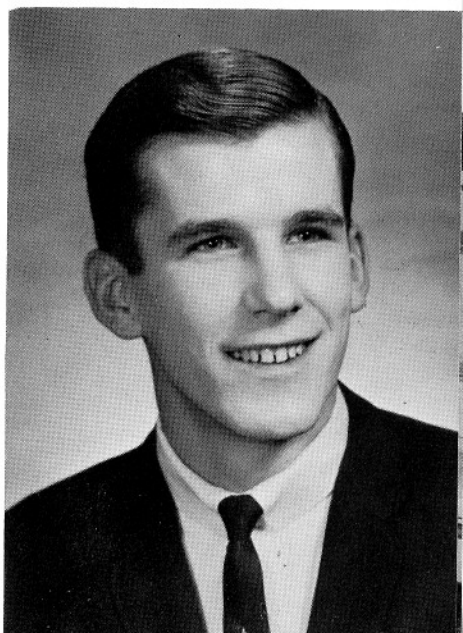


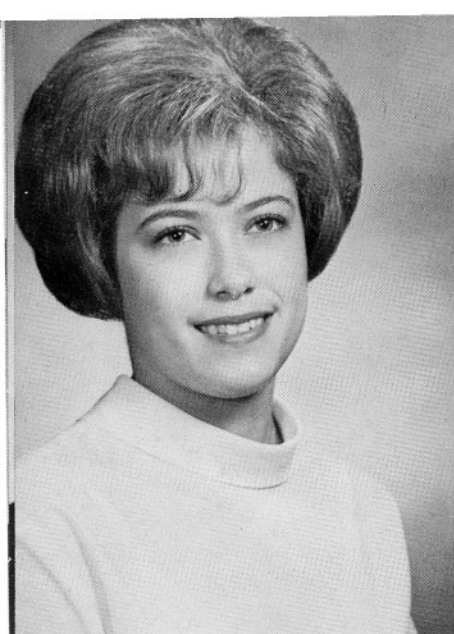
JOHN HARTNETT

Transfer: Gonzaga Prep 2
Spokane, Washington

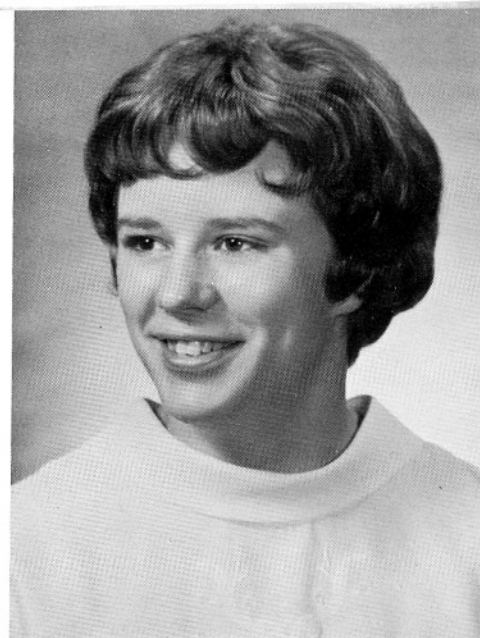
STUDENT BODY PRESIDENT 4

Class Officer 2,3
Football 2,3,4
All Panhandle 4
Most Valuable Player 4
All State 4
Basketball 2,3,4
Golf 2,3,4
Letterman's Club 2,3,4
Elks' Leadership Award 4
Boys' State 3

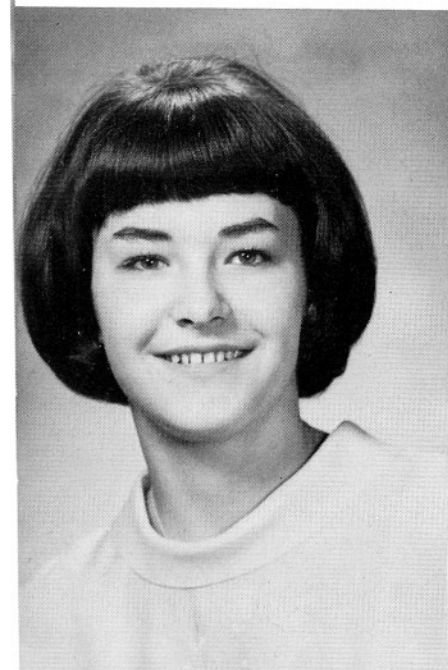




LUCILLE JESSICK
 Glee Club 1,2
 Pep Club 1,2,3,4
 Junior Miss Pageant 4
 Girls' Sports Club 4

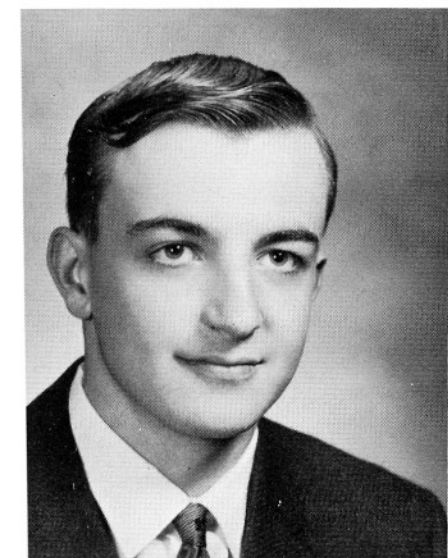


PATRICIA KEANE
 Glee Club 1,2,3,4
 Press Club 3,4
 Pep Club 1,2,3,4
 Laurel Staff 3,4
 Le Coeur Staff 4
 Sodality 3,4
 Vocation Club 1,3
 Chess Club 2,3
 Math Club 1,2,4
 Girls' Sports Club 4
 Girls' State Alternate 3
 Student Council 4



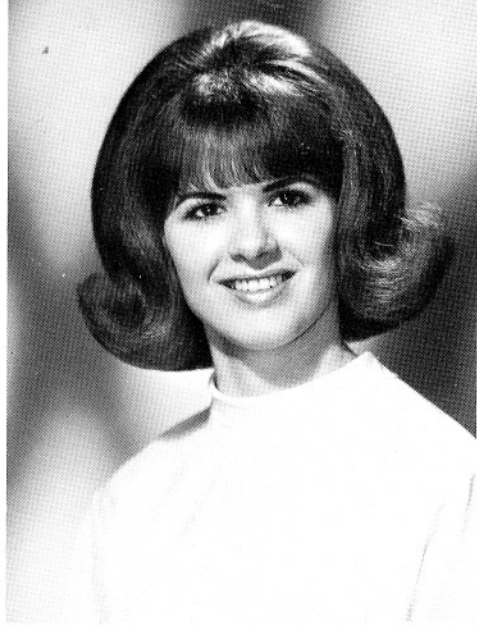
ANN KRYGER
 STUDENT BODY SECRETARY 4
 Class Officer 1
 Glee Club 1,2,3,4
 Press Club 3,4
 Laurel Staff 3,4
 Le Coeur Staff 4
 Vocation Club 3,4
 Legion of Mary 1,2
 Math Club 2
 Cheerleader 3,4
 Junior Prom Queen 3
 Junior Miss: 2nd Runner-up
 Poise and Appearance 4
 Pep Club 1,2
 Student Council 3,4
 Girls' Sports Club 4

SUZANNE KOONTZ
 Glee Club 1,2,3,4
 Press Club 4
 Pep Club 1,2
 Laurel Staff 4
 Le Coeur Staff 4
 Legion of Mary 1
 Cheerleader 3,4
 Girls' Sports Club 4

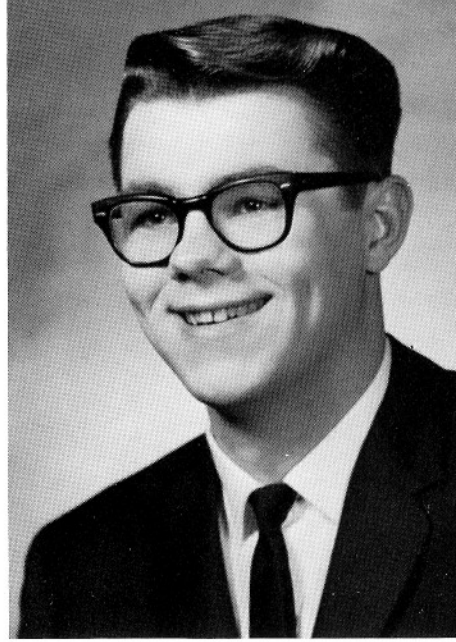


CHRISTOPHER KRIMM
 Transfer: St. Maries H.S. 2
 Saint Maries, Idaho
 Class Officer 2
 Legion of Mary 2

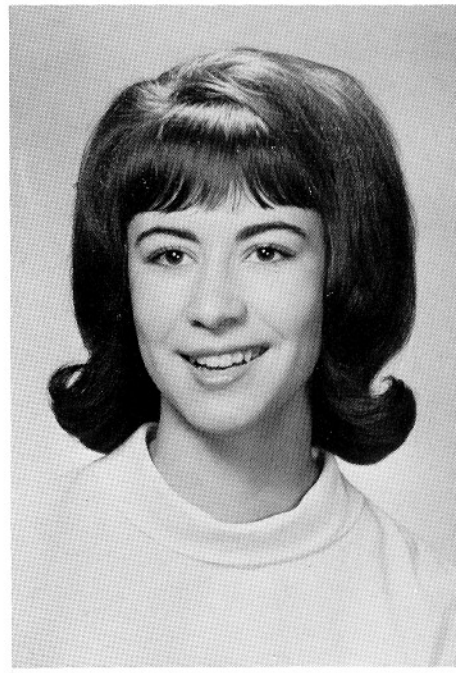




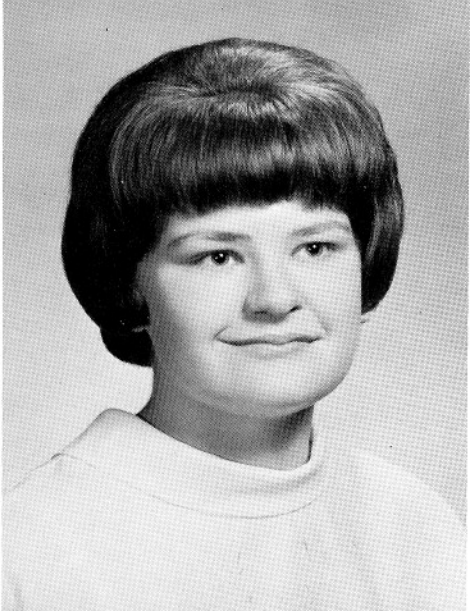
LINDA KURDY
Glee Club 1,2,3,4
Pep Club 1,2,3
Legion of Mary 1
Cheerleader 4
Girls' Sports Club 4



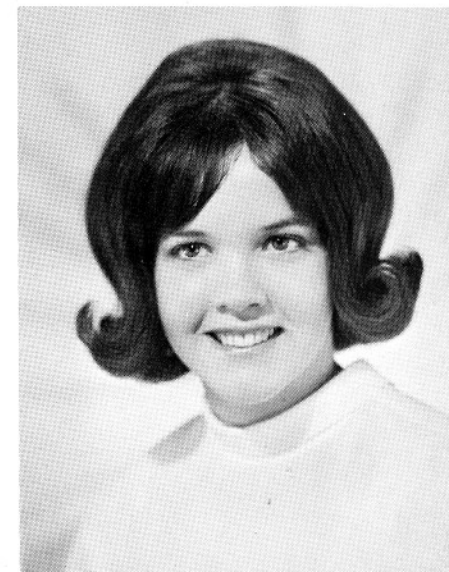
DARRELL LARSEN
Football 4
Letterman's Club 4



GLETA LONG
STUDENT BODY TREASURER 4
Glee Club 1,2,3,4
Pep Club 1,2,3,4
Drill Team 4
Vocation Club 2,4
Girls' Sports Club 4



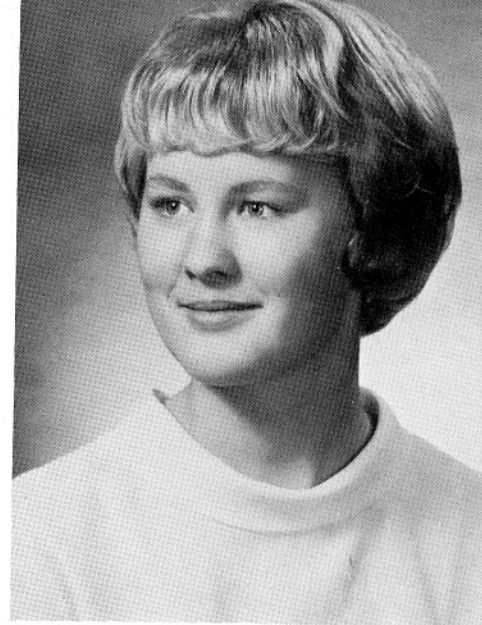
ANNE MacDONALD
Glee Club 1,2,3,4
Press Club 1,3,4
Pep Club 1,2,3,4
Laurel Staff 3,4
Le Coeur Staff 4
Vocation Club 3,4
Legion of Mary 1
Girls' Sports Club 4



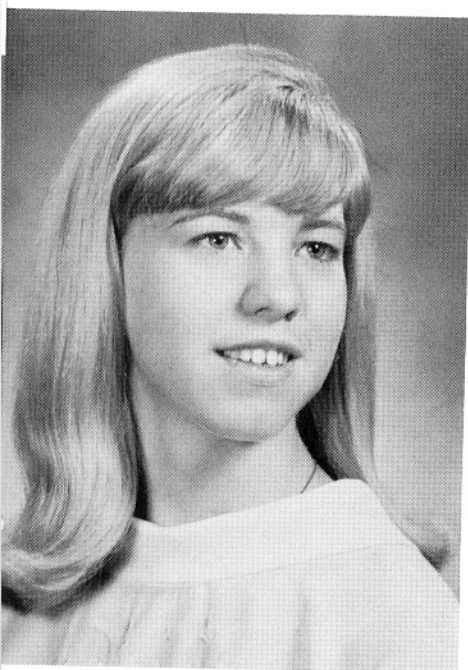
MARY BETH MATSON
Glee Club 1,4
Press Club 3
Pep Club 1,2,3
Vocation Club 3
Cheerleader 4
Homecoming Princess 4
Girls' Sports Club 4



PATRICIA McCORMICK
 Class Officer 1
 Glee Club 1,2
 Pep Club 1,2,3,4
 Girls' Sports Club 4

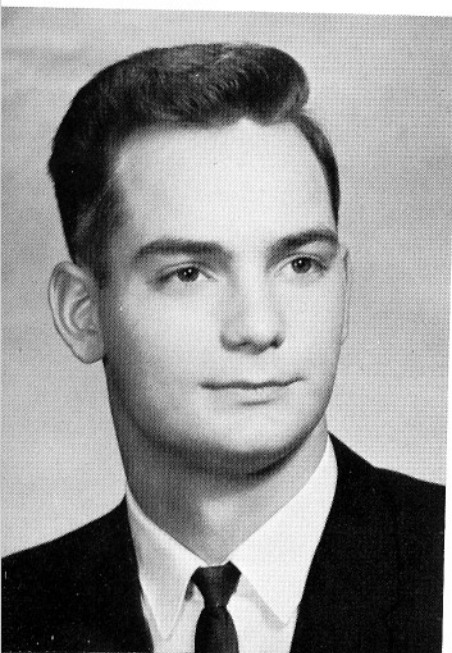


LINDA McDONELL
 Glee Club 1,2,3,4
 Press Club 3,4
 Pep Club 1,2,3,4
 Drill Team 3,4
 Laurel Staff 3,4
 Le Coeur Co-Editor 4
 Legion of Mary 1,2,3
 Chess Club 2,3
 Math Club 1,2
 Girls' Sports Club 4
 Girls' State Alternate 3

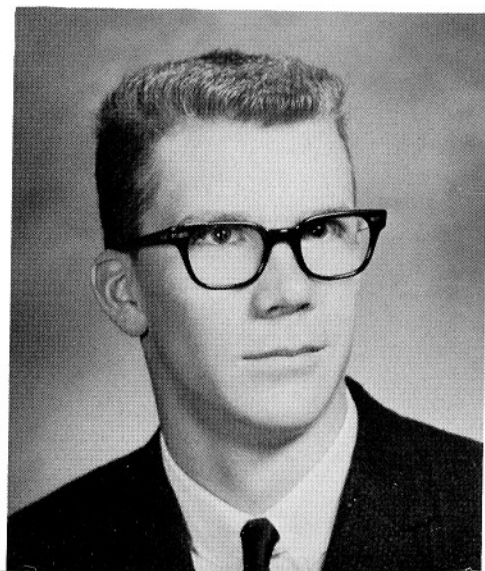


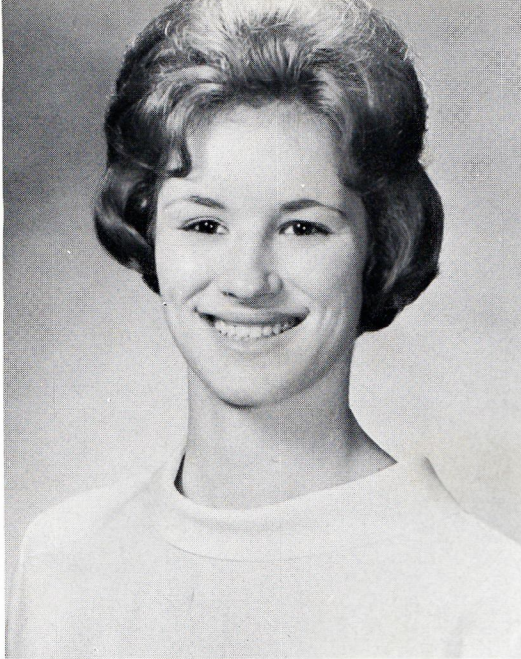
VALERIE McRILL
 Transfer: Twin Falls H.S.
 Twin Falls, Idaho
 Class Officer 2
 Glee Club 1,2,4
 Press Club 4
 Pep Club 1,2,4
 Laurel Staff 4
 Le Coeur Co-Editor 4
 Sodality 2,4
 Legion of Mary 1,2,4
 Chess Club 2
 Math Club 2,4
 Elks' Leadership 4
 Girls' Sports Club 4

MICHAEL MIHELICH
 Football 1,2,3
 Basketball 1
 Letterman's Club 1,2,3,4
 Squires 1



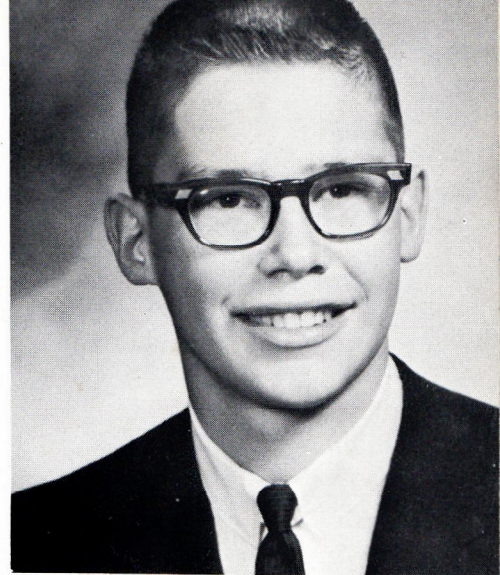
ROBERT MEYERS
 Football 1
 Basketball 1,2
 Squires 1





STEPHANIE MONTREUIL
Girls' Sports Club 4

MICHAEL NUTT
Le Coeur Staff 4
Math Club 3,4
Squires 1,2,3,4

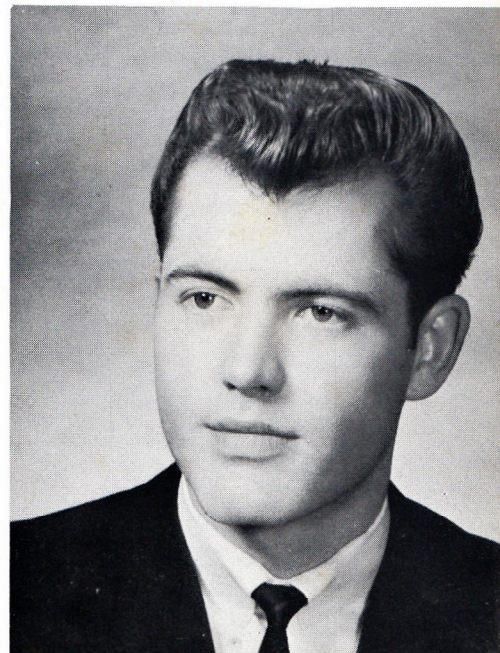


ROSEMARIE NOVAK
Glee Club 1, 2
Press Club 1
Pep Club 1,2,3,4
Vocation Club 1
Legion of Mary 1
Girls' Sports Club 4



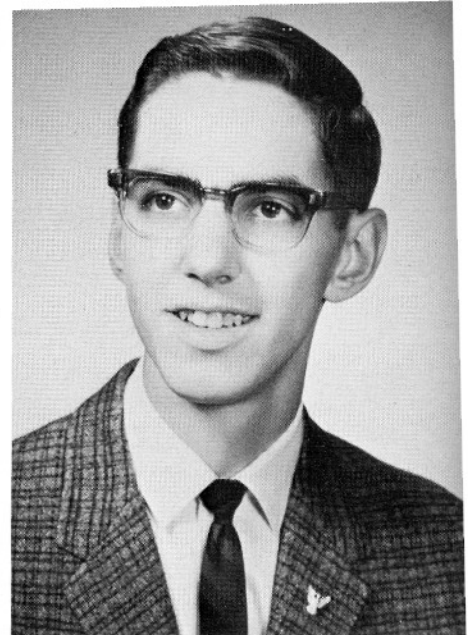
SUSAN POITEVIN
Transfer: Marycliff H.S.
Spokane, Washington
Glee Club 4
Pep Club 4
Homecoming Princess 4
Girls' Sports Club 4

THOMAS PRINGLE
Transfer: Post Falls H.S. 2
Post Falls, Idaho





JANICE PURDY
 Glee Club 1,2,3,4
 Press Club 3,4
 Pep Club 1,2,3,4
 Laurel Staff 3
 Le Coeur Staff 4
 Vocation Club 4
 Girls' Sports Club 4

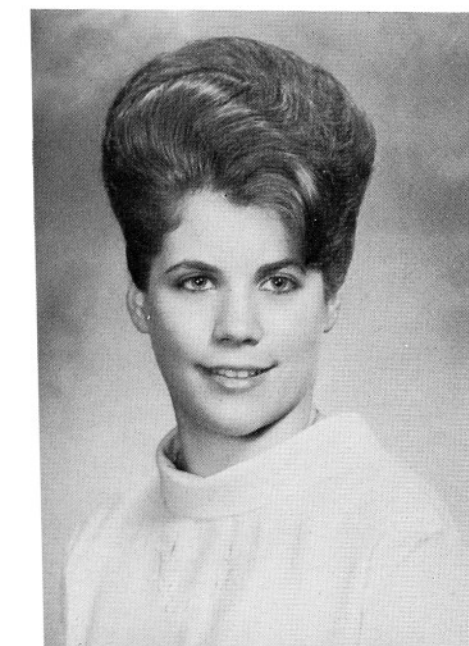


MICHAEL RANSOM
 Glee Club 1,2,3
 Press Club 2,3,4
 Laurel Staff 2,3,4
 Le Coeur Staff 4
 Legion of Mary 1,2,3,4
 Math Club 1
 Student Council 4

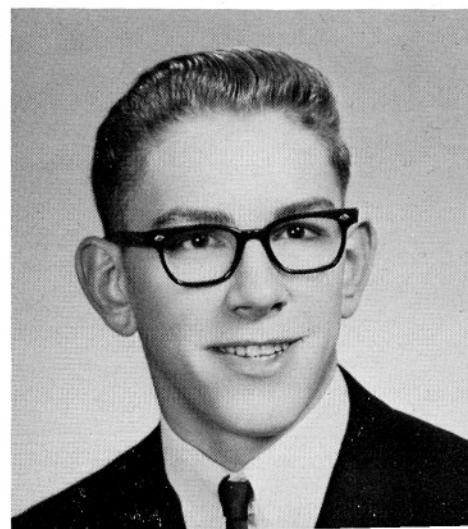


JILL RIPLINGER
 Class Officer 3
 Glee Club 1,2,3,4
 Pep Club 1,2,3,4
 Drill Team 3,4
 Sodality 3
 Vocation Club 3,4
 Legion of Mary 1
 Junior Prom Princess 3
 Girls' Sports Club 4
 Student Council 3

DONALD SAND
 Math Club 1,2,3,4
 Football 2,3,4
 All-Panhandle 4
 Basketball 1,2,3,4
 Baseball 3,4
 Letterman's Club 3,4
 Squires 1,2,3,4



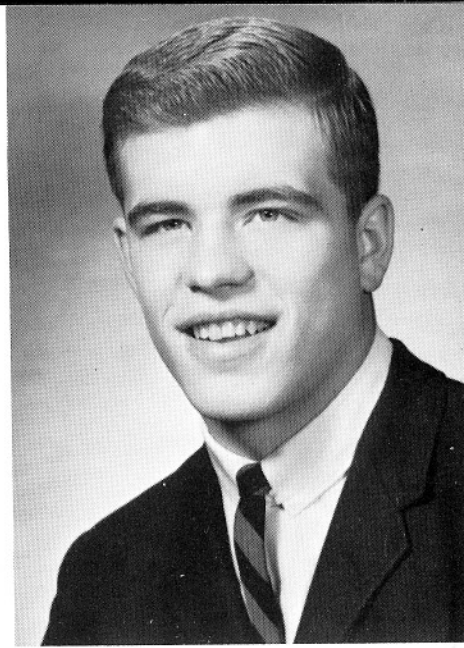
LYNNE ROMANS
 Glee Club 2,3





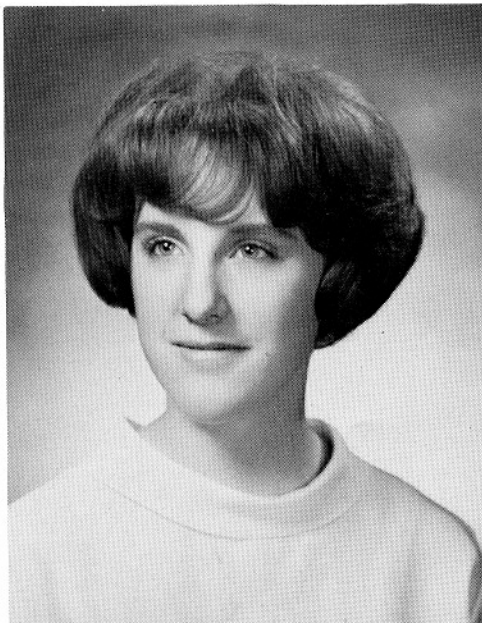
JUDY SANDERSON
Glee Club 1
Pep Club 1,2,3,4
Drill Team 3,4
Vocation Club 3,4
Girls' Sports Club 4

WILLARD SULLIVAN
Transfer: Gonzaga Prep 3
Spokane, Washington
Glee Club 4
Football 4
All-Panhandle 4
Basketball Manager 4
Letterman's Club 4

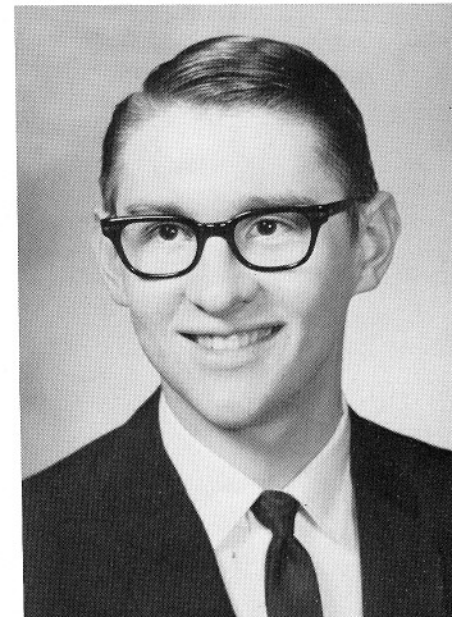


ELAINE WILSON
Glee Club 1,2,3
Girls' Sports Club 4

KRISTINA YACKS
Glee Club 1,2,3,4
Pep Club 1,2,3,4
Vocation Club 3
Girls' Sports Club 4
Student Council 4



JAMES YEAGER
Class Officer 2
Legion of Mary 2
Chess Club 3
Baseball 2
Manager 2
Letterman's Club 2,3,4



SENIOR ACTIVITIES



GIRLS' AND BOYS' STATERS were from left to right: Robin Hultner, John Hartnett, John Miller, and Sharon Wachter.



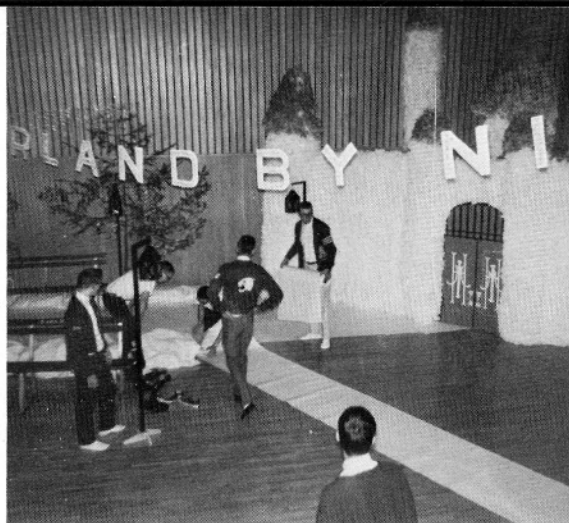
Four contestants in the JUNIOR MISS CONTEST were: Robin Hultner, Lucille Jessick, Ann Kryger, and Sharon Wachter. Winning prizes were Ann Kryger, Miss Poise and Appearance and Second Runner-Up; and Sharon Wachter, Miss Personality.

12 YEAR SENIORS





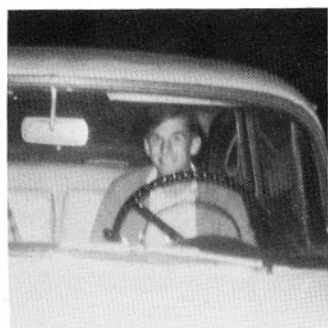
Grateful seniors presented Sister Beatrice with a dozen red roses after completion of Senior Ball.



"That Was The Week That Was" Nov. 15-19 spent in preparation for the Senior Ball. The theme was "Wonderland By Night", featuring a fairyland palace in the midst of a winter park scene. The Skylarks provided mood-matching music.



Seniors presented Mr. Boyle with a token of their appreciation after the completion of the Senior Ball.



I can't take it anymore!

"Catch Us If You Can", was the 1965 Homecoming theme. Chris Jacobsen escorted 1st Princess Mary Beth Matson; Queen Sharon Wachter was crowned by Bob Elgee; and 2nd Princess Suzanne Poitevin was escorted by Ed Mihelich.



Elk's Leadership winners are, from LEFT: V. McRill, 3rd—Girls'; J. Hartnett, 1st—Boys'; R. Hultner 2nd—Girls'.



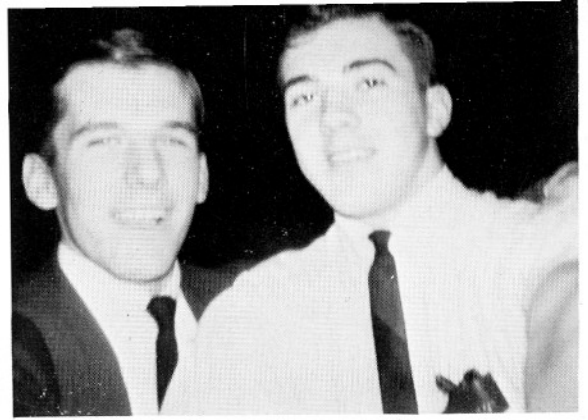
But I don't want my picture taken.

Sally Arney, Betty Crocker Homemaker of Tomorrow.





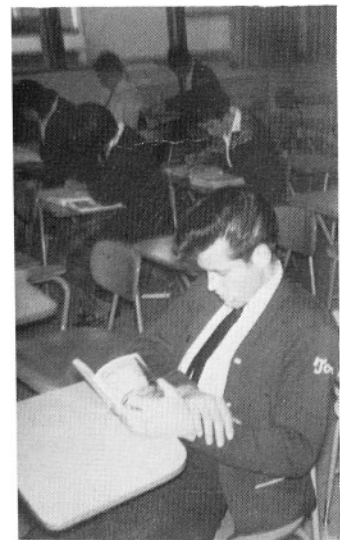
Many mathematical principles are to be learned from cards — illustrated by the Advanced Math Class.



Aw, come on John, tell us another joke.



We told her we'd have her head!



Is he Asleep????

Sadie gets her man!



"T'WAS THE NIGHT BEFORE CHRISTMAS"

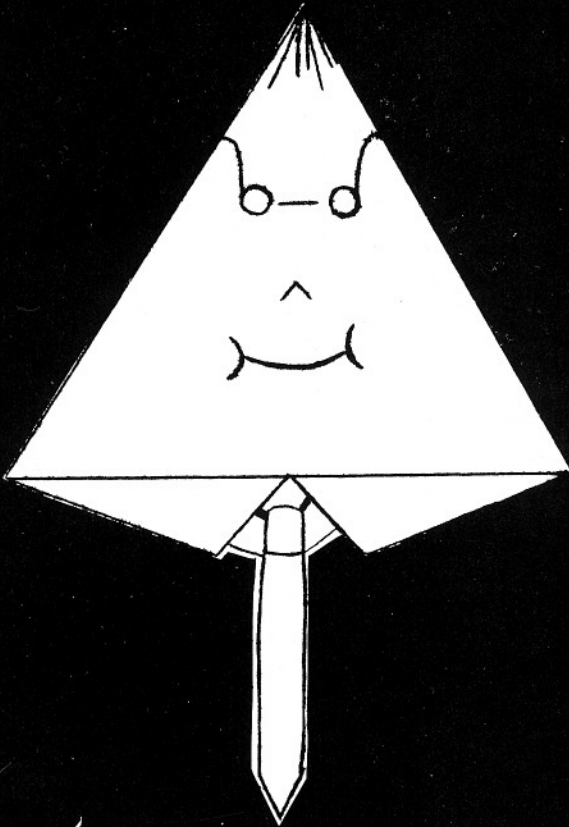
Santa's Sugar Plums!



Santa and his reindeer!

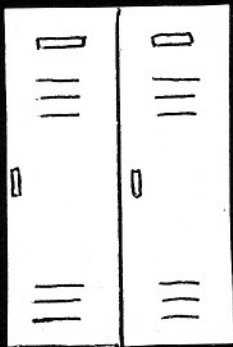


UNDERCLASSMEN

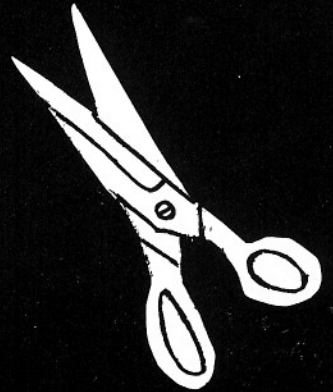


The Blue Bandit strikes again!

I'm afraid to open it...



Get it out of your eyes...



JUNIORS



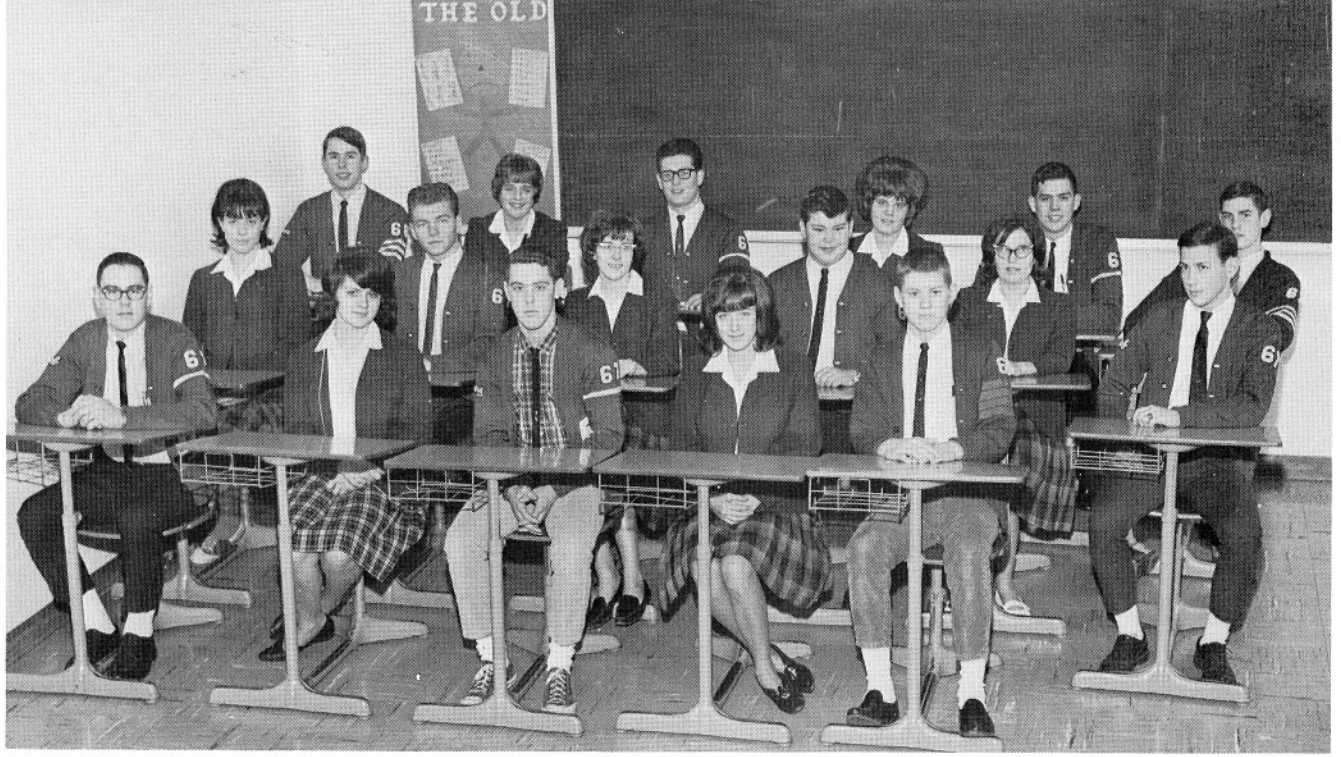
OFFICERS—FIRST ROW: James Rarick, Vice-President; Janice Smith, President; Frederick Schaffner, Representative 203. SECOND ROW: Christine Kootz, Treasurer; Joseph Erickson, Representative 204; Lynne Gebhart, Secretary.



Junior homeroom teachers, Sister M. Rosina and Sister M. Philip Neri, congratulate James Hofmeister on his winning the State "Voice of Democracy" contest, which merited him a five day trip to Washington, D.C.



FIRST ROW: Stephen Bowser, Nancy Novak, Richard Kom, Melody Denius. SECOND ROW: Jenifer Kirsch, Daniel Peterson, Rita Malby, Paul Sand. THIRD ROW: James Hofmeister, Patricia Ransom, Richard Jacobson, Linda Blessing.



FIRST ROW: Robert MacDonald, Kaylen Kuka, Lawrence Lenz, Kathleen Treichel, Patrick Harrington. SECOND ROW: Victoria Petersen, Steven Popiel, Patricia Tipton, James Nutt, Shirley Bielen, Robert Delyea. THIRD ROW: Robert McFarland, Kris King, Stanley Grygny, Janice Shannon, Steve Dolan, Mark Ballantyne.

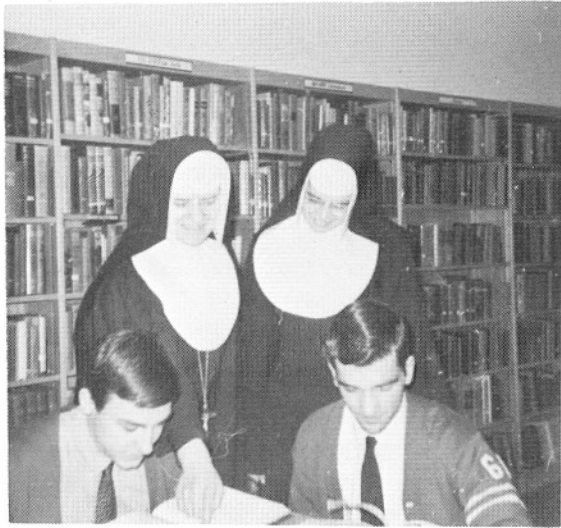
FIRST ROW: Leslie Fraijo, Patrick Giesa, Phyllis Bauman. SECOND ROW: Margaret Riplinger, Gerald Neeser. THIRD ROW: Catherine Thompson, James Russell.



FIRST ROW: Virginia Karst, Sheila Johnston. SECOND ROW: Dwayne Dunbar, Diane Chase, Robert Huetter.



SOPHOMORES



Who says sophomores NEVER work!



OFFICERS—SEATED: Christopher Jacobson, Treasurer; Mary McFarland, Secretary. STANDING: Patrick Gray, Representative, 201; Michael Gray, Representative 102; Edward Mihelich, Vice-President; Robert Elgee, President.

FIRST ROW: Lance Koep, Donna Anderson, Virginia Bowser, Deborah Castellan, Lawrence Riplinger. SECOND ROW: Colleen Baker, Todd Erickson, Constance Chase, John Fiscus, Julie Solomon. THIRD ROW: Clifford Singer, Jeanette Carpenter, David Diemert, Patricia Miles, Allen Brown.





FIRST ROW: Colleen Sullivan, Patricia Yacks.
 SECOND ROW: Susan Ransom, Janice Lovell, Janis Valente, Thomas McFarland. THIRD ROW: Terry PuFahl, Barbara Sonnichsen, Kenneth Montreuil, Marcia Swank.



Sally McMurray, Lloyd Ogden, Ellen Matson.

FIRST ROW: Joan Jaeger, Ronald Koep, Judy Martin, Paul Gebhart. SECOND ROW: Thomas Martin, Gloria Karst, Patrick Miller, Susan Galles. THIRD ROW: Donagene Knight, Paul Fromm, Patricia Karst, James Giesa.



FRESHMEN



OFFICERS—SEATED: Donna Shively, Representative, 107; Mary O'Malley, President; Joanne Brueggeman, Representative, 101. STANDING: David Yeager, Treasurer; Ann Erickson, Secretary; Robert Blessing, Vice-President.



"So what if I was absent!"
retorts James Hagen.



FIRST ROW: Michael Daly, Mary Bauman. SECOND ROW: William Dickinson, Laura Gebhart, Lynette Moore. THIRD ROW: Melanie Koep, Maria Thompson, Michael Miller.



FIRST ROW: Ruth Harrington, Darlene Brueggeman, Gayla Newell, Joyce Ohnemus, Cathyne Sand. SECOND ROW: Judy Jacobson, James Poitevin, Laura Hocesvar, Ronald Douglas, Rosie Schaffner. THIRD ROW: Mark Crowder, Barbara Daugharty, James Riplinger, Lola Guimond, Brian McPoland.

FIRST ROW: Geoffrey Wachter, Theresa Roche, Linda Novak, Kathleen Keane, Michael Chase. SECOND ROW: Charlotte Lovell, James Dolan, Donalyn Holovka, Thomas Kom, Laura Fraijo. THIRD ROW: Anthony Larsen, Bernadette Brooten, James Diemert, Nancy Lake, Donald Shannon.



CANDIDS



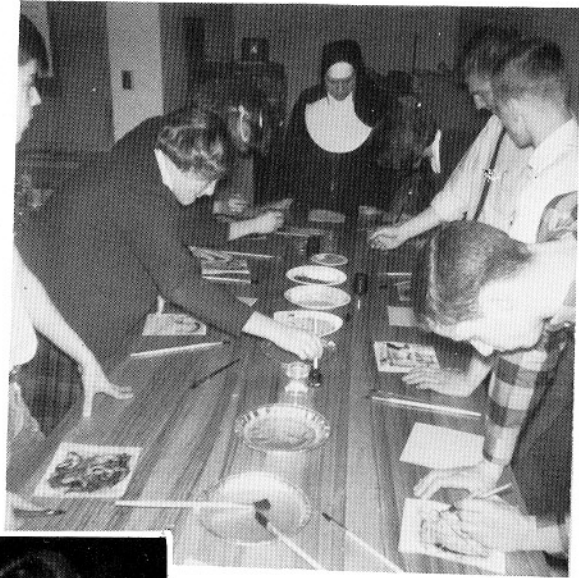
Merrily we sew along!



Even the genius is stumped!



Volley, Volley over!



Sandbox I or Modern Art?



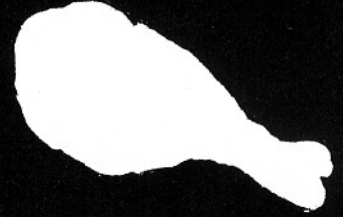
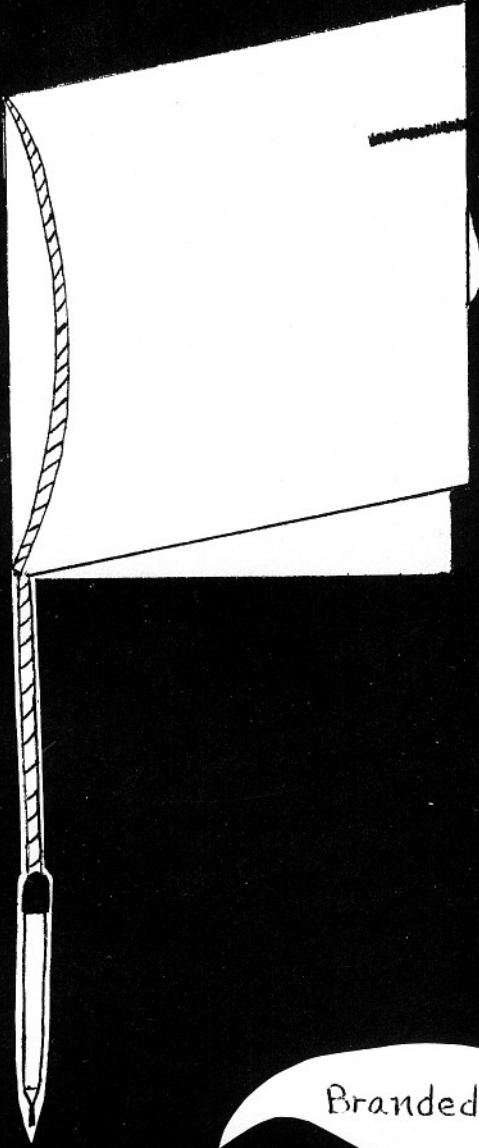
Oh! For me?

Look, I'm telling you it's not funny!

So what if I can only hunt and peck.



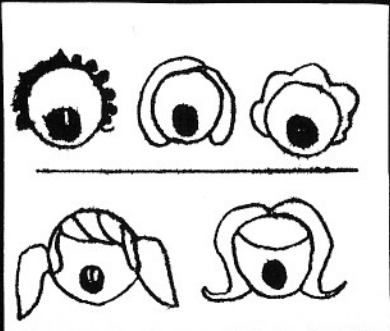
ORGANIZATIONS



Pass the chicken,
Mr. Boyle...

Go, Panthers,
Beat Hawks

Branded!



CLUBS

VOCATION CLUB MEMBERS—from left to right:
L. Gebhart, L. Blessing, A. MacDonald, N. Novak,
C. Koontz. SECOND ROW: S. Arney, A. Kryger, G.
Long, V. Karst, K. Treichel, K. King. THIRD ROW:
S. Wachter, L. Fraijo, J. Purdy, M. Bauman, L. Geb-
hart, Sister M. Philip Neri, P. Ransom.



BELOW—LEGION OF MARY: M. Riplinger, L.
Stockwell, V. McRill, C. Sullivan, Sister M. Rosina,
M. Ransom, S. Johnston.



ABOVE—SODALITY: FIRST ROW: V. McRill, P.
Keane, Rep.; P. Tipton. SECOND ROW: Sister M.
Philip, R. Hultner, Sec.; J. Carpenter, D. Knight.
THIRD ROW: S. Dolan, Perfect; S. Bowser.



SQUIRES—FIRST ROW: T. Erickson,
R. Jacobson, D. Dunbar, T. PuFahl, D.
Diemert, J. Diemert, T. Kom.
SECOND ROW: D. Sand, A. Brown,
C. Jacobson, M. Nutt, T. Martin, J.
Nutt, P. Sand.





Making up the male section of the LE COEUR STAFF are: FIRST ROW: John Miller, John Wakefield, Jerry Jaeger, Mike Ransom; SECOND ROW: Mike Nutt.



This year's CO-EDITORS of the LE COEUR and AD- VISOR are: Valerie McRill, Sister M. Mariel, and Lin- da McDonell.



Steve Dolan and Sister Mariel roll the *Laurel* into produc- tion. Interested observers are Sister M. Alphonsa and Anne MacDonald.

The female section of the LE COEUR STAFF are: FIRST ROW: Robin Hultner, Jeannie Fraijo, Valerie McRill, Linda McDonell, Sister M. Mariel. SECOND ROW: Sharon Wachter, Pat Keane, Anne MacDonald, Ann Kryger, Sally Arney, Janice Purdy and Su- zanne Koontz.





MATH CLUB meetings: Shown here are the ardent members. FIRST ROW: L. Fraijo, S. Bowser, P. Ransom, K. Treichel. SECOND ROW: C. Sullivan, L. Guimond, S. Ransom, P. Keane, V. McRill. THIRD ROW: R. Hultner, S. Johnston, M. Nutt, Sister M. Beatrice, Moderator. FOURTH ROW: M. Ballentyne, J. Erickson, J. Poitevin.

A Rosette award, presented to the *Laurel* Staff has surely motivated the staff. FIRST ROW: Steve Dolan, Mike Ransom, Joe Erickson, Bob MacDonald. SECOND ROW: Pat Keane, Linda McDonell, Sister M. Mariel.

G L E E





PRESS CLUB—SEATED: V. McRill, J. Wakefield, N. Novak. SECOND ROW: S. Arney, P. Bauman. THIRD ROW: V. Fraijo, J. Purdy, A. MacDonald. STANDING, FOURTH ROW: S. Wachter, R. Hultner, A. Koontz. FIFTH ROW: R. McFarland, M. Ballentyne, J. Erickson, J. Miller, J. Jaeger, M. Ransom, S. Dolan, R. McDonald, P. Keane, L. McDonell, Sister M. Mariel, Advisor.



GO WHERE THE ACTION IS!

GIRLS' SPORTS CLUB—FIRST ROW: Jill Kirsh, Secretary; Nancy Novak, Representative. SECOND ROW: Mary Beth Matson, Vice President; Mrs. Steele, Moderator. THIRD ROW: Valerie McRill, President; Linda McDonell, Treasurer.

CLUB



PEP CLUB



Most of the girls in I.H.M. Student Body are members of the Pep Club; their spirit and enthusiasm has followed their teams to a great year of many new records and awards.

CHEERLEADERS



The Varsity Cheerleaders have done a tremendous job in keeping the Academy's spirit at its highest peak. **FRONT ROW:** Suzanne Koontz, Ann Kryger, and Linda Kurdy. **BACK ROW:** Sharon Wachter and Mary Beth Matson.

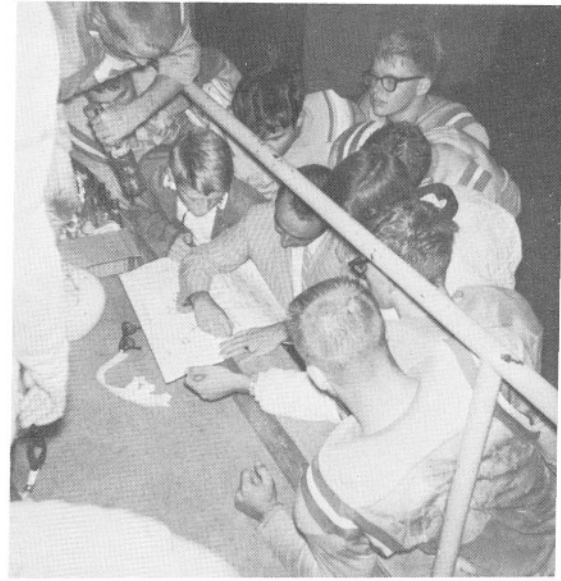
"Panthers . . . gr-r-r-reat!" Thus these three have really helped in arousing the spirit carried throughout the games this year, during the basketball season. The Junior Varsity Cheerleaders, from left to right are: Kathy Treichel, Jill Kirsch, and Nancy Novak.



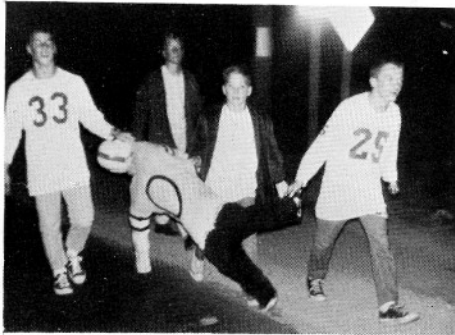


Maker always manages to make the scene.

"Concentrate, Concentrate!!!" This is only one of the many words heard throughout the drill team practices. Under the direction of Mrs. Joan Steele, the drill team has won second place trophy in the Fourth of July Parade. Also their many performances at home games added to the entertainment of all.



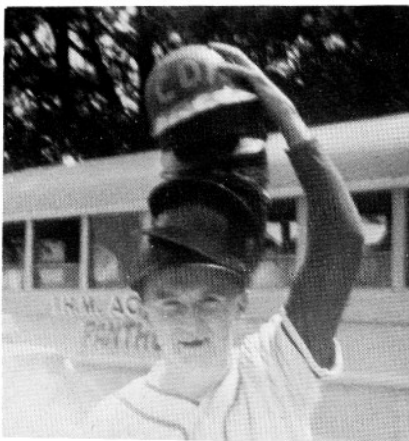
I want your autograph too!



Another Panther victim.

We've got SPIRIT!!!

I want ta' be taller!

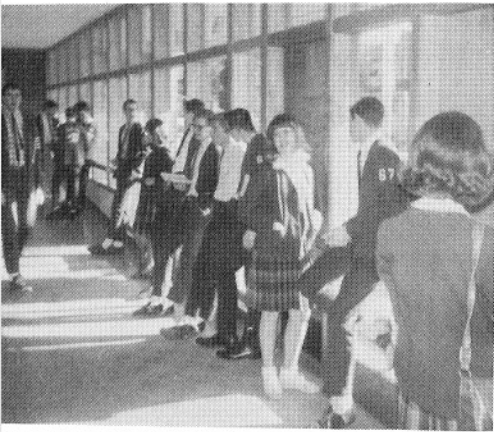




Nancy Novak receives her class ring from Father Cleary in special ceremony for Juniors.



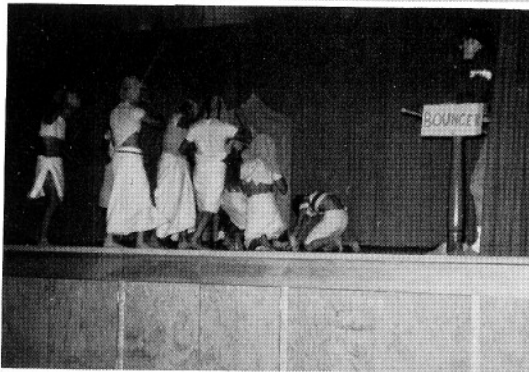
Thanksgiving gift presented to Sisters by Academy students.



Can't you see we're studying?



Juniors presented "Pierre," complete with quarreling lovers and feminine (?) dancing girls.



Salami! Salami! Bologna!



Someone's posing!

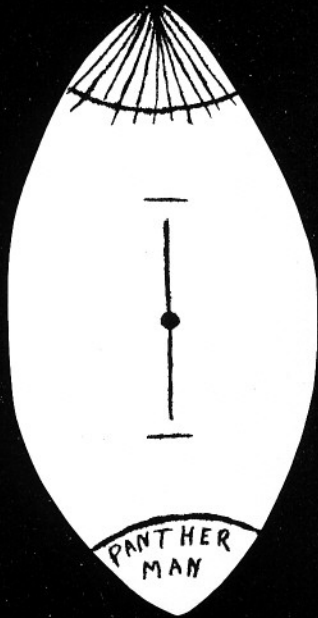
This is what goes on at those important faculty meetings!



Home Ec. knows that food is the way to a man's heart.



ATHLETICS

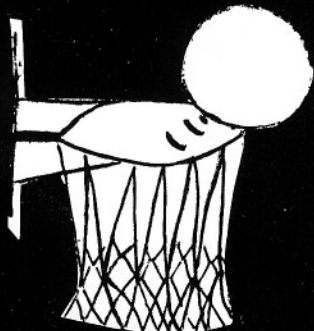


Look, they can stand up by themselves...

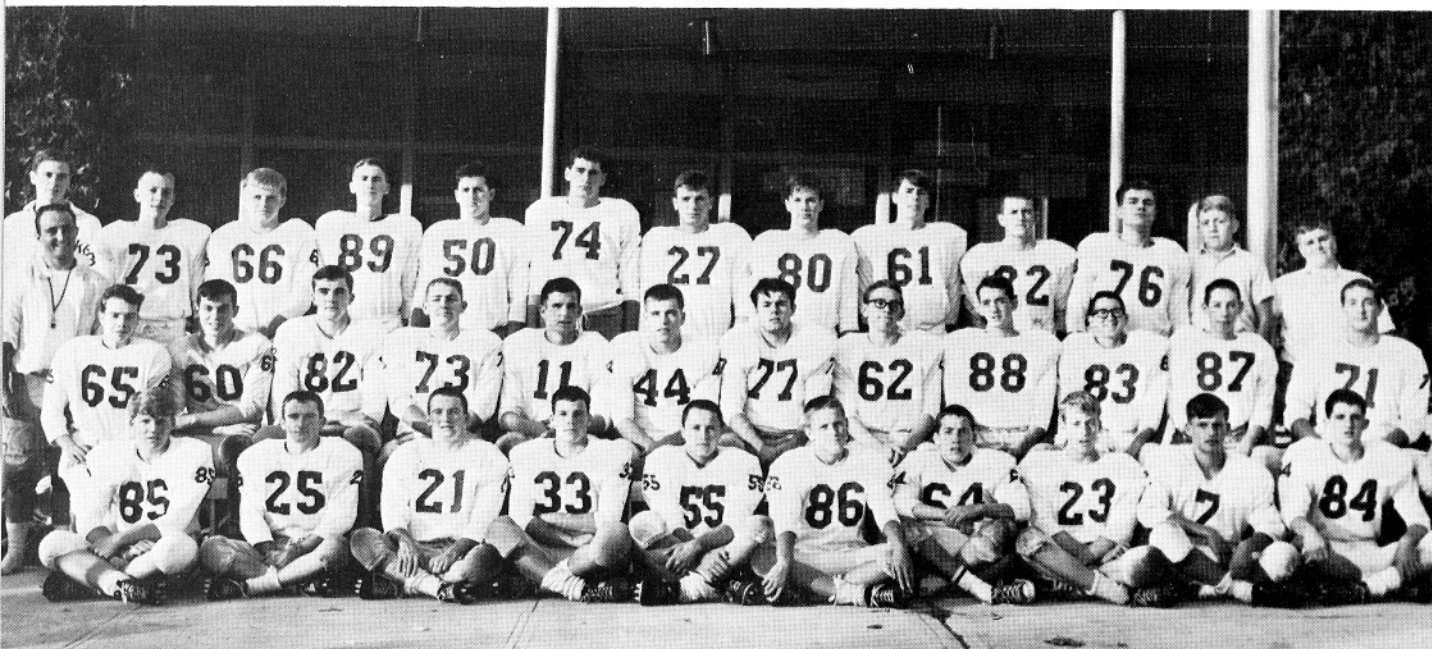


Hail Mary...

What are those little holes in the floor ...



FOOTBALL



The 1965-66 edition of the Panther football team provided the I.H.M. Academy with the first undefeated 11-man football season in its history. Coach Gene Boyle's team scored 226 points to its opponents' 19. The team was also voted North Idaho's Team of the Year.

I. H. M. FOOTBALL SCHEDULE

	IHM	OPP		IHM	OPP
Potlatch	34	0	Mullan	32	0
Bonnets Ferry	26	0	Priest River	13	6
St. Maries	20	0	Newport	7	6
Lakeland	27	0	Post Falls	31	0
Kootenai	36	7			

John Hartnett and Mike Peters received their All-State certificates at the annual football banquet.

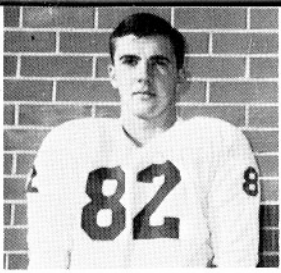


I.H.M.'s Pride and Joy! All-Panhandle winners: FIRST ROW: M. Elgee, and M. Peters. SECOND ROW: B. Sullivan, B. Larson, J. Hartnett, J. Miller, S. Grygny, and D. Sand.

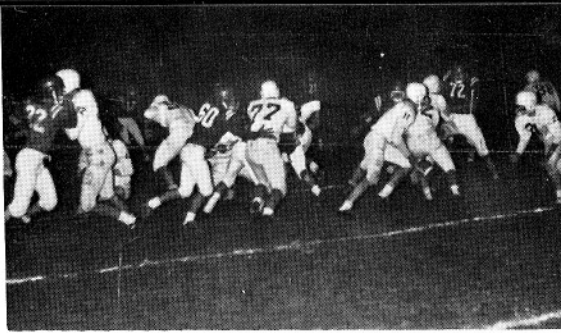


John Hartnett displays his Most Valuable Player award as Mike Peters bears the "burden" of Most Inspirational trophy.



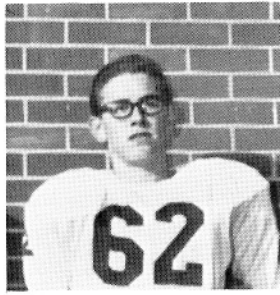


JOHN MILLER

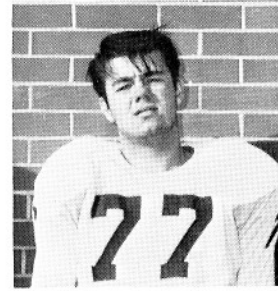


MIKE PETERS

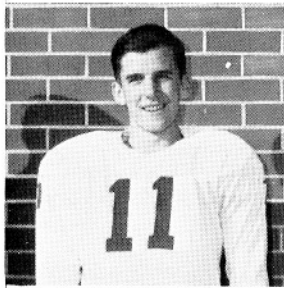
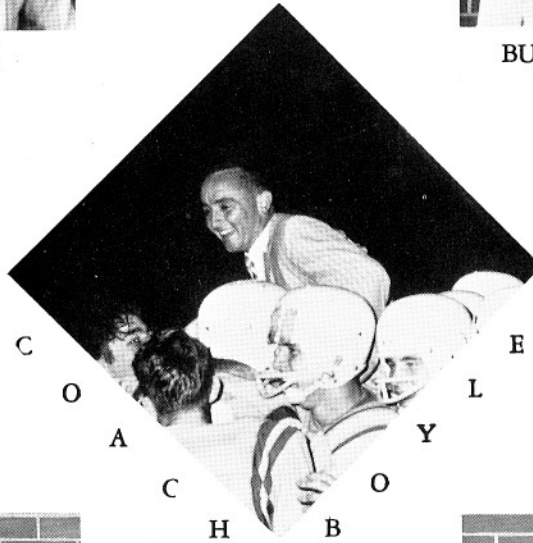
Academy quarterback, John Hartnett, follows good blocking around left end for a good gain against St. Maries.



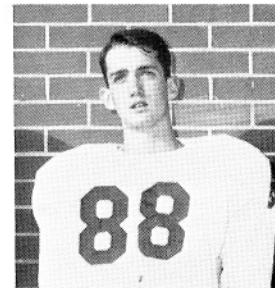
DON SAND



BUTCH LARSEN



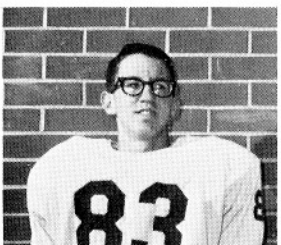
JOHN HARTNETT



MIKE ELGEE

Panther speedster, Mike Gray, takes the handoff and goes for the final touchdown in action against the Lumberjacks.

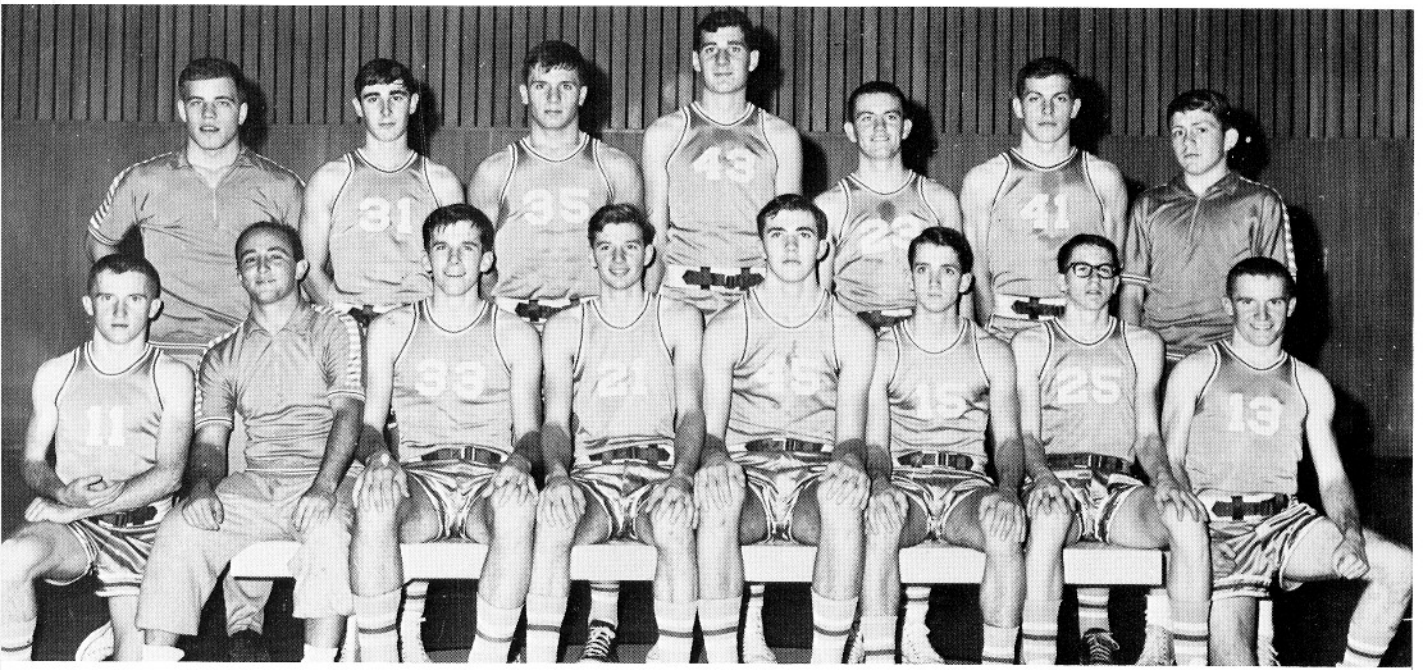
JERRY JAEGER



BILL SULLIVAN



BASKETBALL



Led by Coach Gene Boyle, the Panthers had one of their most successful seasons.

I. H. M. BASKETBALL SCHEDULE

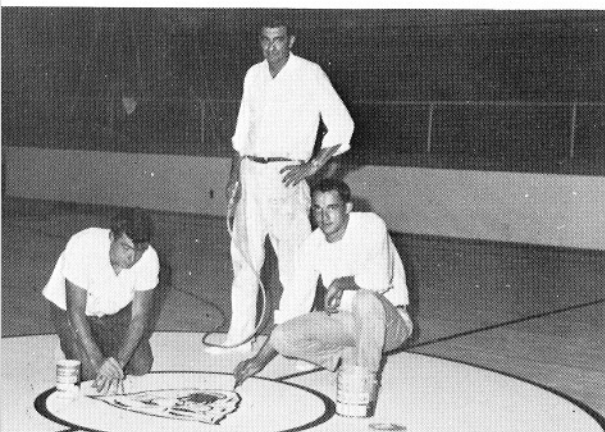
	IHM	OPP
Post Falls	44	48
Newport	65	45
Bonnors Ferry	78	38
Newport	54	49
Priest River	83	48
St. Maries	68	47
Priest River	57	32
Riverside	44	55
Priest River	71	49
St. Gertrude's	76	47
St. Gertrude's	50	48

	IHM	OPP
Post Falls	49	63
Kootenai	74	59
Bonnors Ferry	55	71
Lakeland	66	38
Clark Fork	91	47
Kellogg	66	58
St. Maries	72	44
Kootenai	66	60
Lakeland	63	23

CATHOLIC TOURNAMENT SCORES

Cottonwood	65	55
Bishop Kelly	55	50

The Panther Gym takes on a new look as Al Stockwell and crew put the finishing touches on the new Panther Head.



"Don't step on the Panther Head!" The Senior basketball players are: J. Jaeger, J. Hartnett, J. Miller, D. Boller, and M. Elgee.

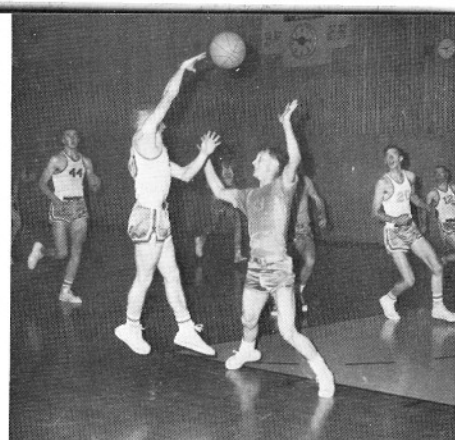




John Miller leaps high in the first game against St. Gertrude's.



Dave Boller drives the base line and scores two in action against the Newport Grizzlies.



A typical panther fast break is seen as Pat Gray passes to Dave Boller for the lay-in.

JUNIOR VARSITY



Shown here are the Academy J.V. Team under Coach Gene Boyle. They provided many thrills for the fans last season in winning most of their games. SEATED: Tom McFarland, Larry Riplinger, Ed Mihelich, Rick Jacobson, Paul Gebhart, John Fiscus, Pat Miller, Jim Giesa, Bob McFarland, Bob Elgee, Jim Diermert, Jim Riplinger, Jeff Wachter, Tom Kom and Ron Douglas. STANDING: Coach Gene Boyle and Manager Lance Koep.

The Academy Lettermen are shown enjoying the "Clean, sweet air" of their spotlessly clean locker room.



BASEBALL



The Panther Baseball team showed strong spirit and determination as it turned in the most successful season in its history with a record of 15 wins, 1 loss. The Academy Nine was also nominated for the Team of the Year award.

BASEBALL RECORD 1965

	IHM	OPP
North Central	6	2
North Central	5	1
Lakeland	5	2
Post Falls	10	1
Plummer	25	3
Coeur d'Alene	3	0
Lakeland	8	2
North Central	9	5
North Central	7	3
St. Maries	7	1
Kootenai	6	3
Kootenai	10	1
Plummer	11	0
Coeur d'Alene	0	1
St. Maries	22	3

GOLF



BOOSTERS



IHM's Golf team saw a very successful second year under the direction of Coach Chuck Harding. FIRST ROW: M. Ballantyne, R. Huetter, J. Wakefield. SECOND ROW: J. Hartnett, M. Elgee, J. Hofmeister and Coach Harding.



Coach Gene Boyle has great admiration for the two products of this year's football season, the Team of the Year trophy and the Conference trophy.



Mr. Boyle and Mike Peters share a friendly hand shake at the Football Awards Assembly. Featured speakers were former pro football player Ray Flaherty, left, and well known sports writer, Bob Maker, right.



David vs. Goliath!

TEAM OF THE YEAR



PATRONS

Mr. and Mrs. Jack Adams
A Friend
Alexander's Motel
Mr. Howard Batchelder
B.B. Pharmacy
Broderick Motor Company
Boat Drive Inn
Cash and Carry
Clark's Jewelers
Club Sporting Goods
Coeur d'Alene Eagles
Coeur d'Alene Press
Coeur d'Alene Style Shop
Coeur d'Alene Van's Creamery
Commercial Printing
Cove Bowl
Diamond National Corporation
English Funeral Home
Everson Jewelers
First Federal Savings & Loan
First Security Bank of Idaho
Fowler's Cafe
Foxy Inn-Hayden Lake
French Cleaners
Gardners Supply Co.
General Telephone
Gift Center
Goodyear Tire
Gridley Investment Co.
Hall Plumbing and Heating
Hayden Lake Barber Shop
Hayden Lake Cleaners
Hayden Lake Hardware
Holland Market
Homberg and Associates
Idaho First National Bank
Interstate Typewriter Co.
Kessel's Jewelry
Key's Grocery
Knuttsen Chevrolet Co.
KVNI Radio Station
Lake City Lanes
Lake City Market
Leader Printing Co.
Leahy's 300
Lighthouse Sporting Goods
Mid Town Variety
Montgomery Ward
Mr. and Mrs. Herb Nagles
Nielson's Texaco
Norge Laundry & Cleaning Village
Pepsi Cola Bottling Co.
Pin Cushion
Plaza Barber Shop
Rathskeller Inn
Redmond's Thrift Store
Reid Bros. Texaco
Robby's Drive In
Rutten's Thrift Store
Runge Furniture Co.
Sonnichsen Agency, Inc.
Stockwell Paint Store
Tower Inn
Undy's Frost Top
Vogue Cleaners
Washington Water Power
Whiteley Grocery
Wilson Pharmacy
Wilma's Cafe
Yates Funeral Home



KANSAS CITY, MISSOURI 64106

LITHO. IN U.S.A. BY YEARBOOK HOUSE



371