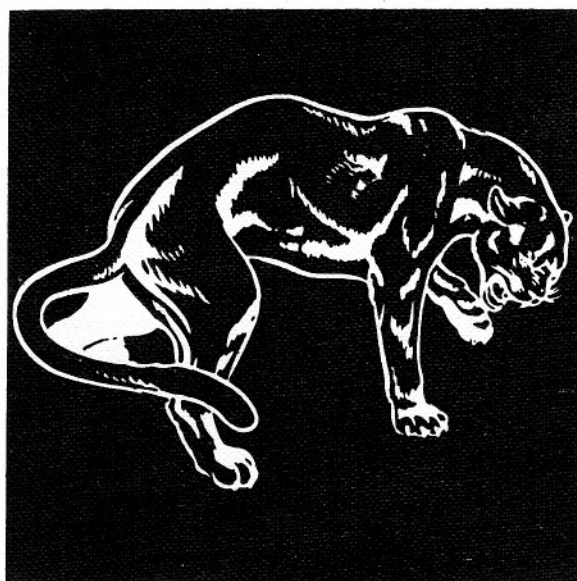


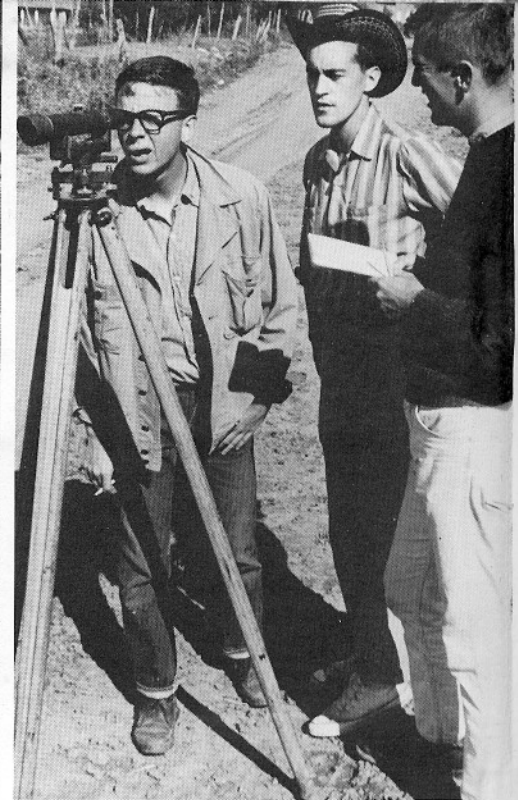
LE COEUR



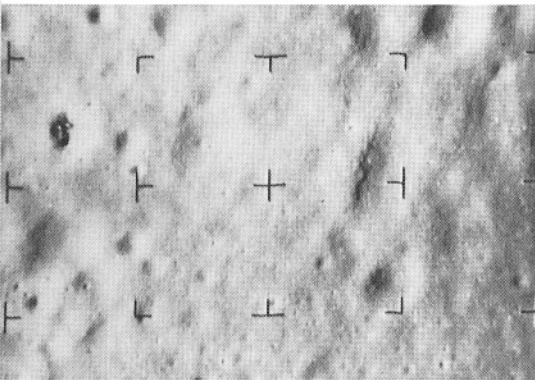
1965



Capital Appearance—The Beatles performed for a youthful audience in Washington on the night of February 12.



Opening for Juniors—These college juniors joined the Peace Corps' new summer project for six to eight weeks of training similar to that for regular Peace Corps volunteers. They later did surveying work near Taos, N.M. After graduation they will be sent to Latin America.



Ranger on Target—This is a photograph of the lunar surface taken by the Ranger 7 spacecraft prior to its impact on the moon July 31st. The area shown is about one and two-thirds miles on a side. The smallest craters are about 30 feet in diameter and 10 feet deep. Some of the large craters are about 300 feet in diameter.

Family Grieves—Gust Carlson, father of Dr. Paul Carlson, medical missionary slain by rebel troops in the Congo, dabbed at his eyes during a news conference in Los Angeles on November 24. He is flanked by his daughter and another son.



New Teen-Age Queen—Smiling Carolyn Mignini, 17, of Baltimore was crowned the new Miss Teen-age America of 1965 in Dallas on November 13.



World's Fair at Night—The New York World's Fair attracted as many visitors at night as it did during the day following its April opening. The nighttime lights set off the beautiful pavilions constructed by many countries.





Democratic Victor—President Lyndon Johnson won the 1964 election by the greatest plurality and per cent of the total vote in U. S. history. Johnson became President at the assassination of John F. Kennedy in 1963.

Barry's Battle for Votes—Sen. Barry Goldwater was surrounded by fans at Knoxville, Tenn., airport September 16 as he campaigned for the presidency on the Republican ticket. The conservative senator swept to a first-ballot nomination at the convention in San Francisco.



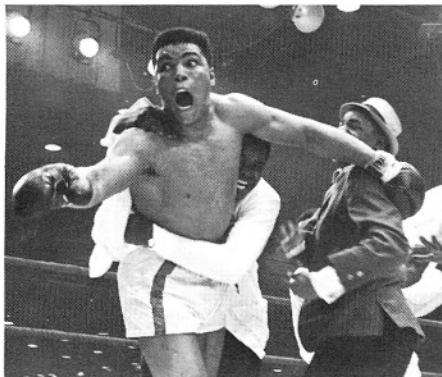
Nobel Prize Winner—Dr. Martin Luther King, Jr., right, was greeted by Richard C. Patterson, commissioner of public events, at Kennedy International Airport Dec. 16 on arrival from Europe. Dr. King was in Oslo to receive the 1964 Nobel Peace Prize.

National Events in Review—1964

Cards are the Winners—Roger Craig leaped on a group of teammates surrounding the pitcher Bob Gibson moments after the last out in the seventh World Series game won by the Redbirds over the Yankees, 7-5, in St. Louis.



I'm the Greatest—Cassius Clay whooped it up with his handlers after he won the world heavyweight title in Miami Beach in February. He was credited with a technical knockout of Sonny Liston when Liston failed to answer the bell for the seventh round.



Alaskan Quake—A whole line of cars rested about 20 feet below street level on a main thoroughfare in Anchorage the day following the disastrous earthquake on March 27.



LE COEUR 1965



IMMACULATE HEART OF MARY ACADEMY

COEUR D'ALENE, IDAHO

We the Seniors of the class of
1965, dedicate our yearbook to Mr.
Robert Hatch, friend and teacher.



Dedication

"In the midst of this sorrow I think we all experience the same movements of heart and mind.

First, there is gratitude to God for having given us such a wonderful son, brother, and friend. Secondly, there is gratitude in hearts with the knowledge that the one whom we loved, after much suffering and many joys, has returned to the Creator of his kind and generous soul. And lastly, there is the sadness of heart that must always accompany a loss so final.

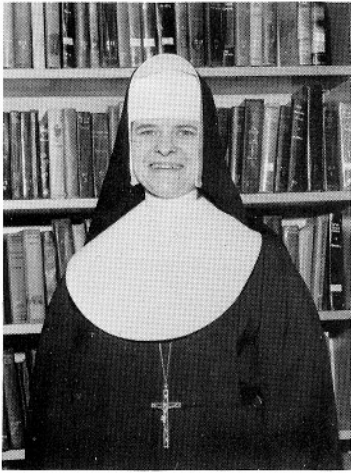
We have all been enriched by knowing Bob. He was immersed in humanity--he loved people and this love was contagious. I think you must find consolation in the fact that you raised a son who had goals, and who lighted many lamps along his way.

I have lost a near and dear friend."

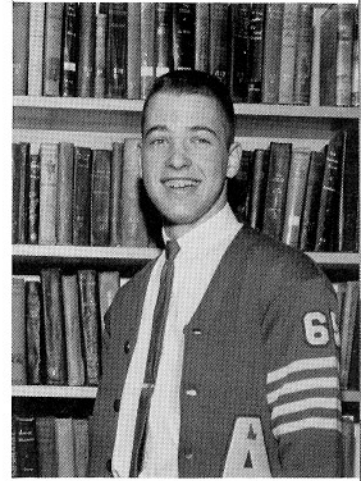
Faithfully,

John McBride, S.J.

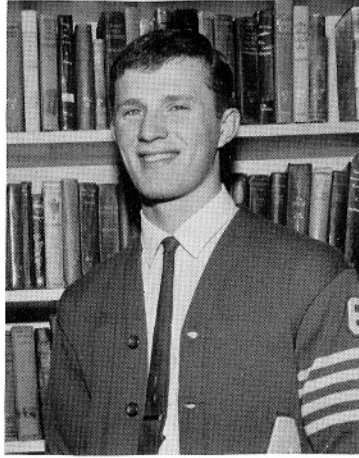
STUDENT COUNCIL



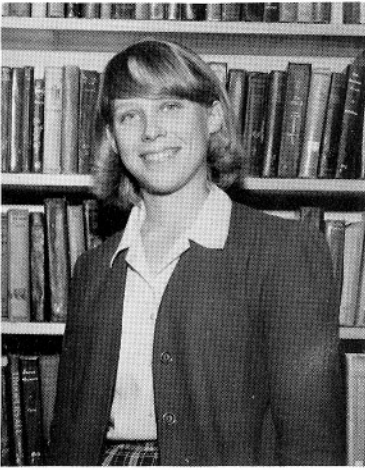
Sister M. Philip
Moderator



Jay Snyder
Vice-President



Tom Neeser
President



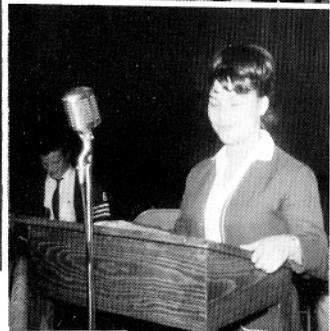
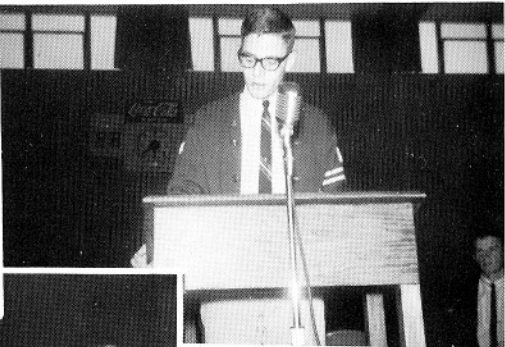
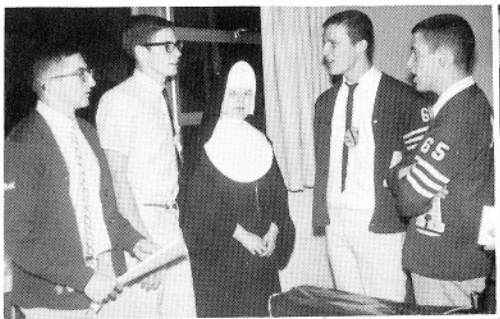
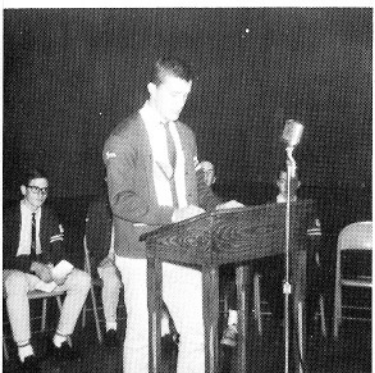
Lynn Gebhart
Secretary



Linda Larsen
Treasurer

FROM LEFT TO RIGHT, STANDING: P. Gray, L. Riplinger, M. Peters, B. Larsen, G. Haler, J. Wakefield, P. Rassier, W. Tyrrell, G. O'Connell, B. McFarland, R. McFarland, J. Russell, B. Delyea. SEATED: C. Palmer, R. Hultner, J. Riplinger, L. Gebhart, J. Snyder, T. Neeser, L. Larsen, M. L. Primozich, K. McMurray, M. McFarland, L. Roberts.

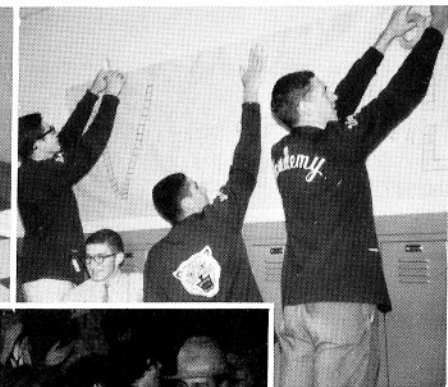




Posters and slogans decked the halls of the Academy as students prepared for the election of the first Student Council. Boosters and campaigners worked hard for their candidates who included Tom Neeser and Gary O'Connell for Pres.; Gary Haler and Jay Snyder for Vice Pres.; Lynne Gebhart and Bob Delyea for Secretary; and Linda Larsen and Mary Leigh Primozich for Treasurer.



The final speeches of the campaign were heard at an assembly in the gym. The election results were announced at a Sadie Hawkins Dance the following evening.





CTIVITIES

JUNIOR PROM

The Cinderella Ball: "I Could Have Danced All Night," was the theme of the '64 Junior Prom, held in the Brown Gymnasium. The gym was transformed into a ballroom with ivory pillars and royal colors accenting the Queen's throne. The highlight of the evening was the crowning of Queen Linda Larsen, shown at right with her escort, Tom Neeser.

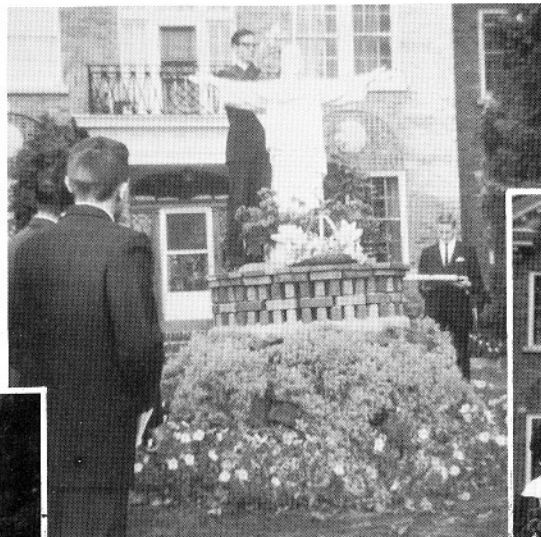
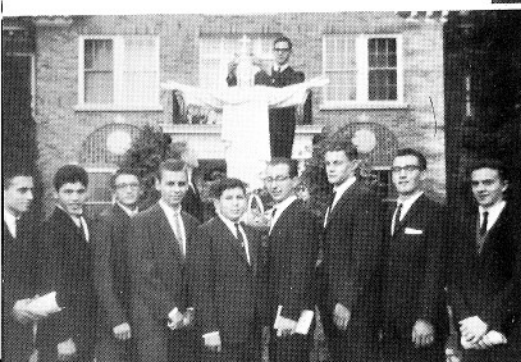


Students are shown BELOW busily adding final touches to their Prom. At RIGHT is Sister Philip Neri, responsible in great part for its success.



CHRIST THE KING

Senior boys form guard of honor for crowning of Christ the King.



Senior girls gather flowers for the coronation.



Senior boys look on as Gary O'Connell crowns the statue of Christ the King.

HOMECOMING



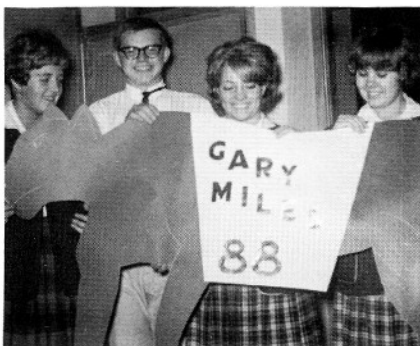
ABOVE: Queen Kathleen McMurray and escort Bob McFarland.

At RIGHT are princesses Janice Karst and Barbara Whiteley with Queen Kathleen.



"Be True To Your School" was the theme of the Academy Homecoming Dance held in the L. V. Brown gymnasium October 16.

The theme was carried out in the school colors with decorations of white, gold and blue. Colorful goal posts at each end of the gym formed the backgrounds for the beautifully draped statue of Our Lady and the throne of the new Homecoming Queen.



ENTERTAINMENT

"Sold to the girl in the blue blazer and plaid skirt!"



Senior girls demonstrate their talent at hootenanny.



Three "cool cats" entertained classes with their "Rhinegold and Fang" arrangement.

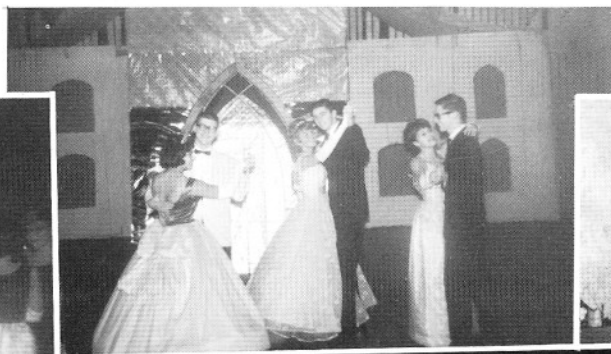


SENIOR PROM

India, the land of mystery and enchantment, was captured by the Senior Prom of '64 as couples danced to the music of the Skylarks from Gonzaga University. The theme "Scheharazade" was carried out by a blue and white replica of the Taj Mahal, bordered on each side by a white minaret.



"Is that Alice with Homer?"



"What do you mean ya gotta stuff chicken wire?"



"May I have this dance?"

INTRAMURALS

"Mother said there'd be days like this!"



"Mirror, mirror on the wall, who's the fairest of them all?"



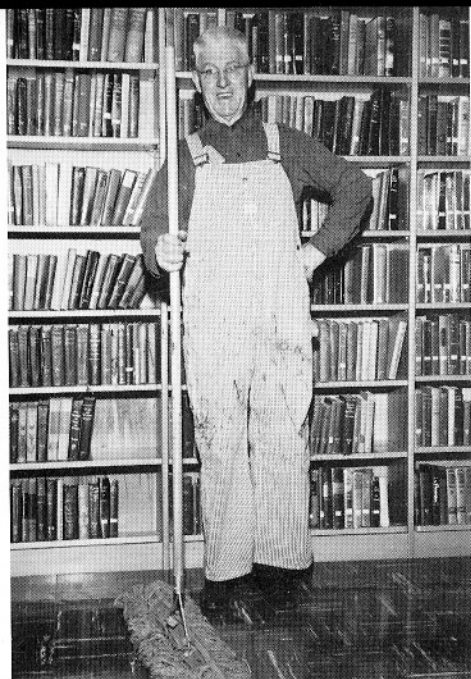
"Our team's better than your team!"



"Oh well, ya can't win 'em all!"



"Gee whiz, holy cow! We want a basket right now!"



AT LEFT: Mr. Garvey, the Academy's faithful housecleaner, is held to the theory that he is "stronger than dirt".



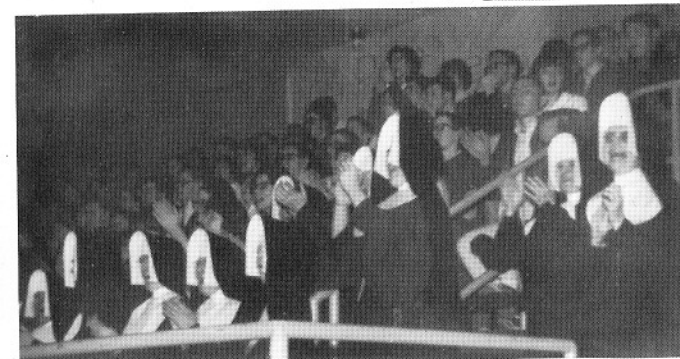
J. Lauf, B. Whiteley, and K. McMurray, serenade the audience, accompanied by T. Cope on guitar and A. Matson at the piano.



AT RIGHT: Coach Boyle leads the Panthers in a victory pray.



SHARON SCHARFF
P. E. Girls

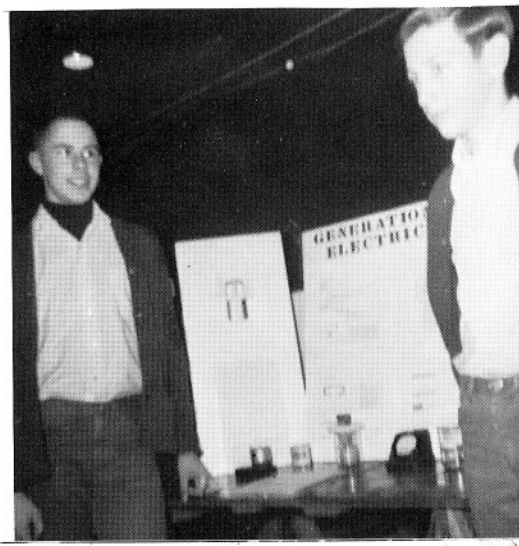


ABOVE: The IHM sisters cheer the Panthers to victory, the first night of the All-Catholic Tournament.

BELOW: L. Kurdy and S. Koontz awe at the new look of THE LAUREL added by Biron Larsen's silk screening.

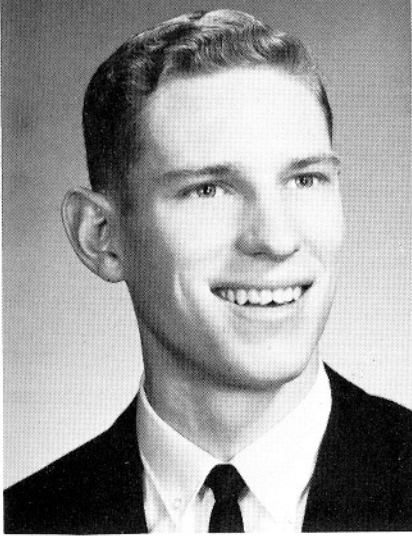


AT RIGHT: Budding scientist, B. McFarland and B. Delyea, display their projects to the camera.

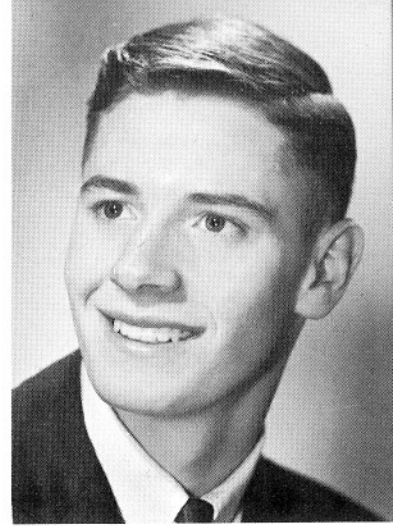




ENIORS



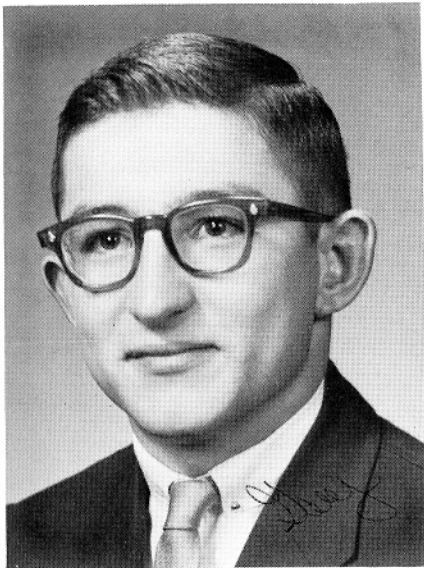
WAYNE TYRRELL, PRESIDENT
 Class Officer 2, 3, 4
 Glee Club 1, 2, 3, 4
 Press Club 3, 4
 Laurel Staff 3, 4
 Le Coeur Staff 4
 Sodality 3, 4
 Christmas King 3
 Football 1
 Basketball 1, 2, 3, 4
 Manager, Football 2
 Letterman's Club 2, 3, 4
 Squires 1, 2
 Student Council 4



GARY O'CONNELL,
 REPRESENTATIVE
 Class Officer 1, 3, 4
 Glee Club 1, 2, 3, 4
 Press Club 3, 4
 Laurel Staff 3, 4
 Le Coeur Staff 4
 Football 1, 2, 3, 4
 Basketball 1, 2, 3, 4
 Letterman's Club 3, 4
 Squires 1, 2
 Golf 3, 4
 Student Council 4
 Boy's State 3



JANE LAUF, SECRETARY
 Class Officer 3, 4
 Glee Club 1, 2, 3, 4
 Press Club 3, 4
 Pep Club 1, 2, 3, 4
 Drill Team 1
 Laurel Staff 3, 4
 Sodality 3, 4
 Vocation Club 3
 Legion of Mary 1
 Cheerleader 3, 4
 Homecoming Mascot

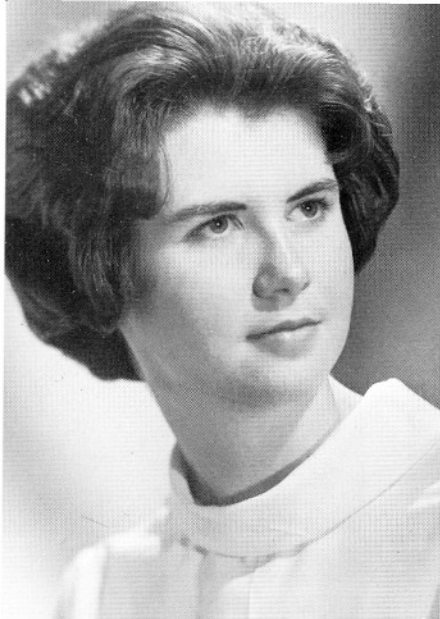


GARY HALER,
 VICE-PRESIDENT
 Transfer: Grand Prairie H. S.
 Grand Prairie, Texas

- Class Officer 4
- Glee Club 3, 4
- Chess Club 3, 4
- Math Club 3
- Football 3, 4
- Baseball 4
- Letterman's Club 4
- All-Panhandle 4
- National Merit Schol. 3
- Student Council 4

JANICE MCGREGOR,
 TREASURER
 Class Officer 2, 3, 4
 Glee Club 1, 2, 3, 4
 Press Club 3, 4
 Pep Club 1, 2, 3, 4
 Legion of Mary 1
 Drill Team 4
 Laurel Co-Editor 3, 4
 Le Coeur Co-Editor 4
 Girls' State 3

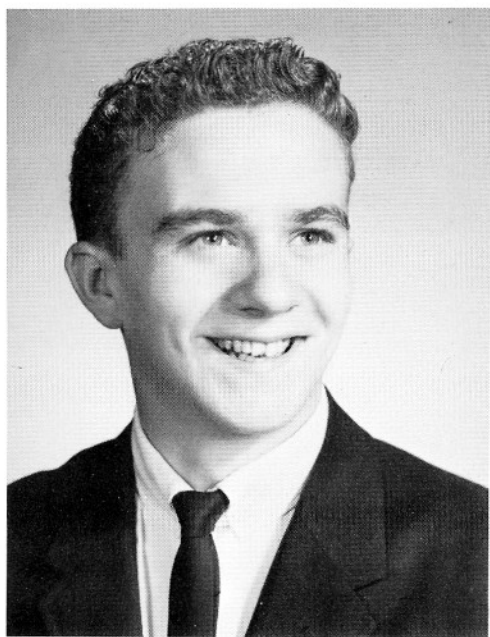




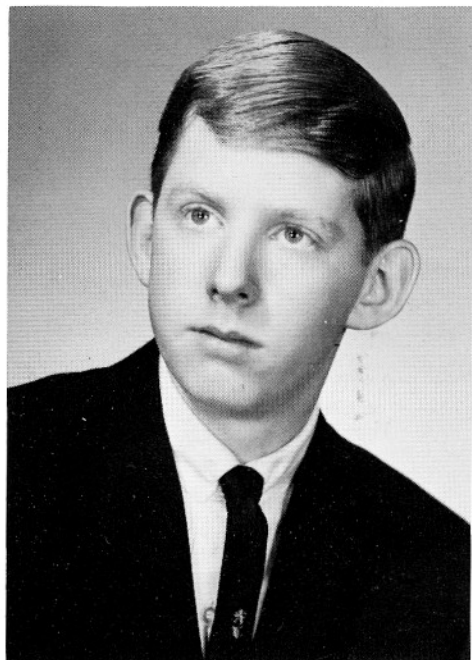
CATHRYN ANDREWS
Glee Club 2, 3, 4
Press Club 1, 4
Pep Club 1, 3, 4
Vocation Club 1
Girl's State Alternate 3
Betty Crocker Award 4



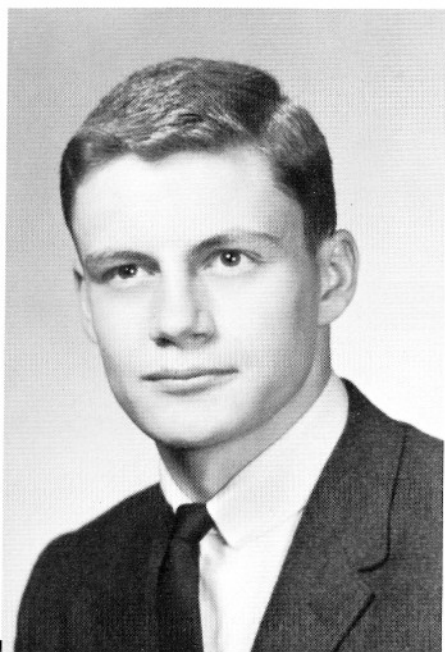
MARY MARGARET BAKER
Glee Club 1, 2, 3
Pep Club 1, 2, 3, 4
Sodality 3, 4
Vocation Club 2
Chess Club 2



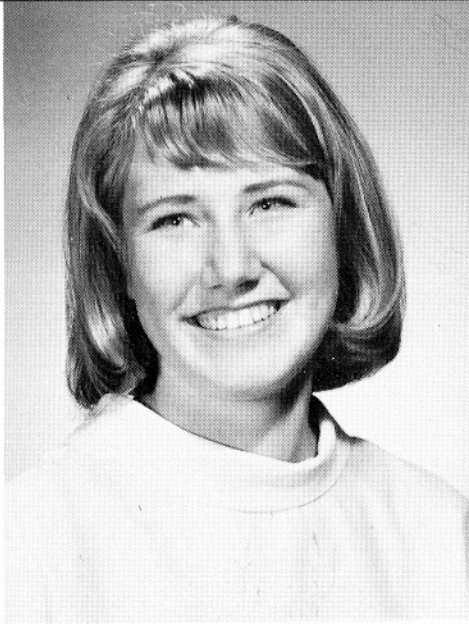
PATRICK CONROW
Legion of Mary 1
Squires 2



THOMAS COPE
Glee Club 1
Legion of Mary 1
Squires 1



MICHAEL CRONQUIST
Class Officer 1, 2
Glee Club 1, 2, 3, 4
Football 1, 2, 3, 4
Basketball 2
Baseball 1
Letterman's Club 2, 3, 4
Squires 1, 2



JANICE KARST
 Class Officer 2
 Glee Club 2, 3, 4
 Press Club 1, 2, 3, 4
 Pep Club 1, 2, 3, 4
 Drill Team 4
 Laurel 3, 4
 Homecoming Princess 4



WILMA EICHHORN
 Transfer: Mater Dei H. S.
 Santa Ana, California
 Glee Club 1, 4
 Press Club 1, 4
 Pep Club 1, 4
 Drill Team 4
 Vocation Club 1
 Legion of Mary 1, 4



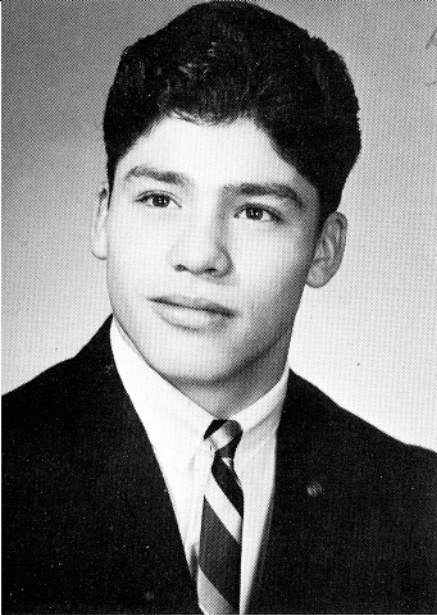
FRANKLIN JESSICK



MARILYN GROSS
 Glee Club 1, 2, 3, 4
 Press Club 3, 4
 Pep Club 1, 2, 3, 4
 Laurel Staff 3, 4
 Vocation Club 1
 Math Club 3

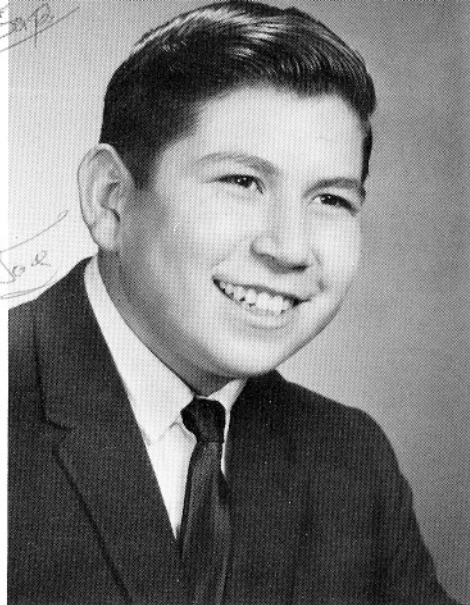


DEBORAH KOEP
 Glee Club 1, 2, 3
 Pep Club 2, 3, 4



*Best of Luck
in the future
Biron 6.5*

BIRON LARSEN
Class Officer 2
Glee Club 2, 3, 4
Press Club 3, 4
Laurel Staff 3, 4
Le Coeur Staff 4
Sodality 3, 4
Legion of Mary 1, 2
Football 1, 3, 4
Basketball 3
Lettermen's Club 4
Student Council 4



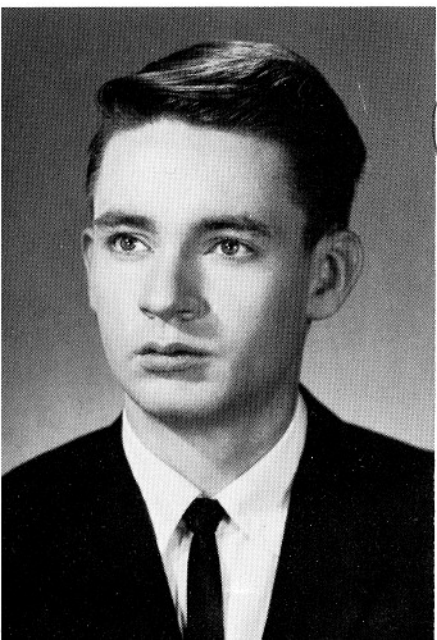
*S.P.B.
Joe*

JOSEPH MARCHAND
Glee Club 1, 3, 4
Press Club 4
Chess Club 4
Letterman's Club 3, 4
Football 1
Manager 1, 2, 3, 4



LINDA LARSEN
Class Officer 1, 2
Glee Club 1, 2, 3, 4
Press Club 3, 4
Pep Club 1, 2, 3, 4
Drill Team 1, 2
Laurel Staff 3, 4
Sodality 3, 4
Cheerleader 4
Junior Prom Queen 3
Student Body Treas.

ANN MATSON
Glee Club 1, 3, 4
Press Club 2, 3, 4
Pep Club 1, 2, 3, 4
Drill Team 1, 2
Laurel Staff 3, 4
Vocation Club 1
Legion of Mary 1
Cheerleader 4



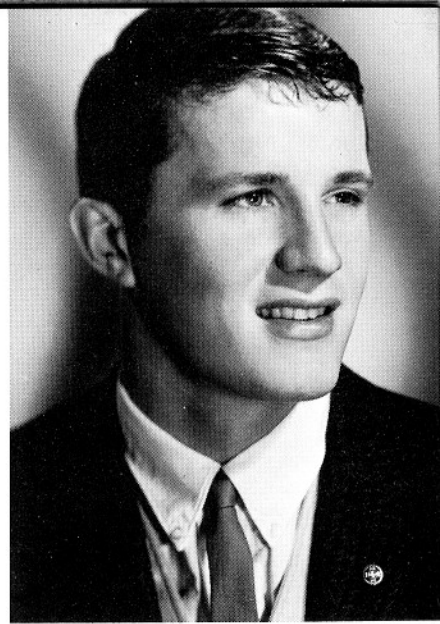
Douglas

DOUGLAS LANFRIED
Press Club 3, 4
Laurel Staff Co-Editor 3, 4
Le Coeur Staff 4
Sodality 3
Chess Club 3, 4
Boy's State Alternate 3





THOMAS NEESER
 Glee Club 2, 4
 Legion of Mary 2
 Letterman's Club 3, 4
 Squires 1, 2, 3, 4
 Student Body President 4
 Football 2, 3, 4
 Basketball 2
 Baseball 1, 2
 Cecil Hare Memorial 4
 All Panhandle Football 4
 All State Football 4
 Golf 3, 4



WILLIAM McFARLAND
 Class Officer 1
 Press Club 3
 Laurel Staff 3
 Letterman's Club 2, 3, 4
 Squires 1, 2
 Football 1, 2, 3, 4
 Basketball 1, 2, 4
 Golf 3, 4
 Cecil Hare Award 4
 All-Conference Football 4
 Student Council 4

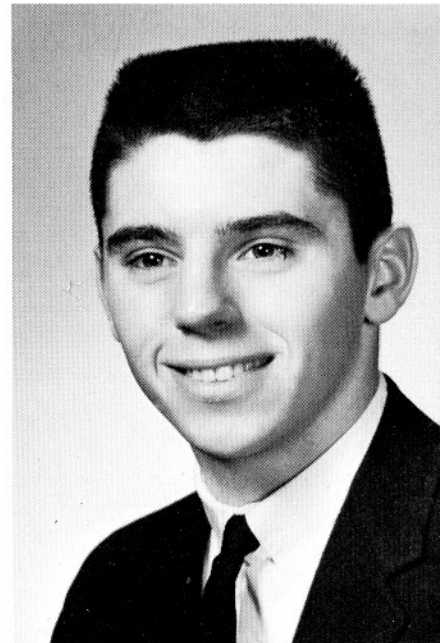
KATHLEEN McMURRAY
 Class Officer 1, 2
 Glee Club 1, 2, 3, 4
 Press Club 2, 3, 4
 Pep Club 1, 2, 3, 4
 Drill Team 1, 2
 Laurel Staff 3, 4
 Le Coeur Staff 4
 Vocation Club 1, 2
 Legion of Mary 1, 2, 3, 4
 Cheerleader 3, 4
 Homecoming Queen 4
 Student Council 4



EILEEN McPOLAND
 Pep Club 3, 4
 Sodality 3, 4



GARY MILES
 Class Officer 3
 Glee Club 1
 Press Club 3, 4
 Laurel Staff 3
 Football 1, 2, 3, 4
 Basketball 2, 3, 4
 Baseball 1, 2
 Lettermen's Club 3, 4
 Squires 2, 3
 Golf 3, 4
 All-Conference Football 4

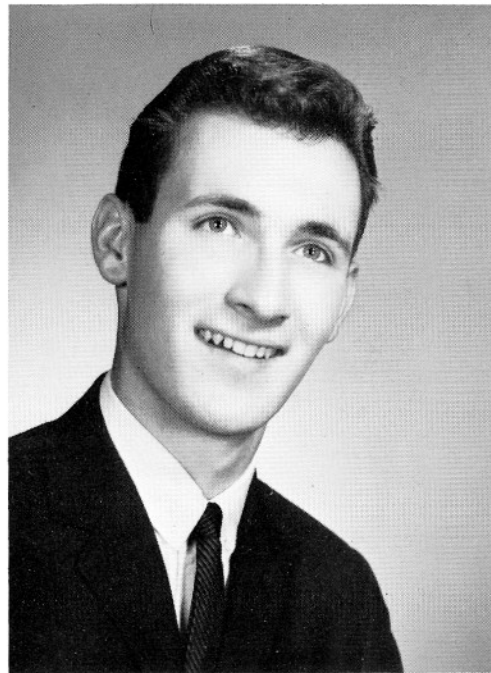




CATHERINE PALMER
 Glee Club 1, 3, 4
 Press Club 2, 3
 Pep Club 1, 3, 4
 Laurel Staff 3
 Le Coeur Staff 4
 Sodality 3, 4
 Student Council 4



CAROL PEPLINSKI
 Press Club 3, 4
 Pep Club 2, 3, 4
 Laurel Staff 3, 4

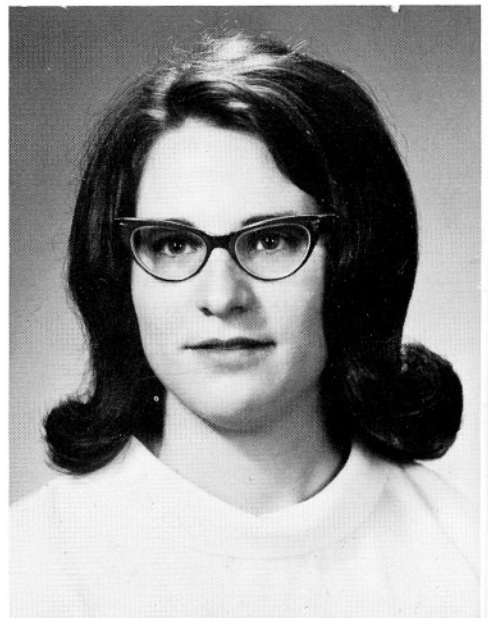


PHILLIP RASSIER
 Class Officer 1, 2
 Glee Club 1, 2, 3, 4
 Press Club 3, 4
 Le Coeur Co-Editor 4
 Sodality 3, 4
 Letterman's Club 4
 Boy's State Alternate 3
 Football 4
 Student Council 4

MARY LEIGH PRIMOZICH
 Glee Club 1, 2, 3, 4
 Press Club 2, 3, 4
 Pep Club 1, 2, 3, 4
 Drill Team 1, 4
 Laurel Staff 3, 4
 Vocation Club 1
 Student Council 4



LINDA ROBERTS
 Glee Club 1, 2, 3, 4
 Press Club 3, 4
 Pep Club 1, 2, 3, 4
 Laurel Staff 3, 4
 Legion of Mary 1
 Chess Club 3, 4
 Math Club 3, 4
 Girl's State 3
 Student Council 4





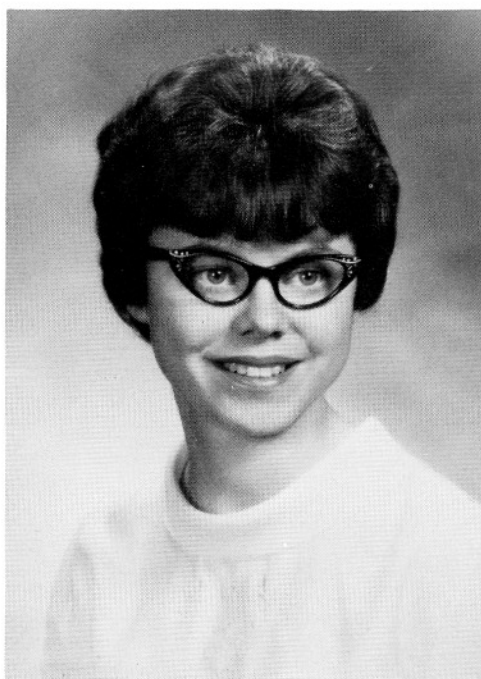
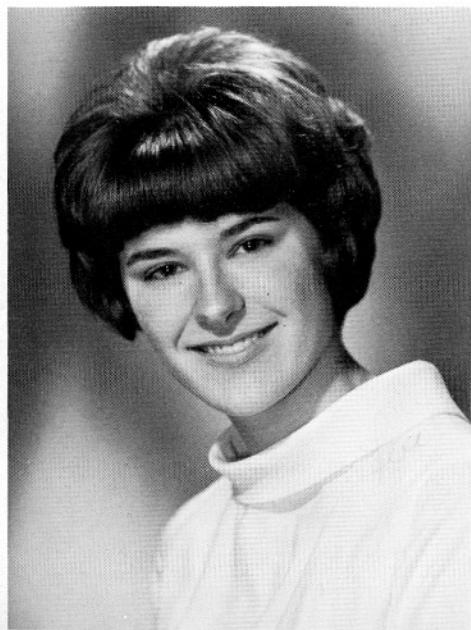
ARTHENE ROBERTSON
Transfer: Sealth H. S.
Seattle, Washington

Glee Club 4



JAY SNYDER
Class Officer 4
Glee Club 1, 2, 3, 4
Math Club 1, 2, 3
Baseball 1, 2, 3, 4
Football (Manager) 4
Letterman's Club 2, 3, 4
Stage Crew 1, 2, 3, 4
Student Body V. P. 4
NMS 3, 4
Elks Leadership 4

ANN SONNICHSEN
Glee Club 1, 2, 3, 4
Press Club 3, 4
Pep Club 1, 2, 3, 4
Drill Team 4
Vocation Club 2
Legion of Mary 1
Girl's State Alternate 3



MIRIAM SHIVELY
Glee Club 1
Pep Club 1, 2, 3, 4
Sodality 3, 4



DENNIS TREICHEL
 Glee Club 1
 Chess Club 3
 Letterman's Club 2, 3, 4
 Football 1
 Basketball 1, 2, 3, 4
 Baseball 1, 2, 3, 4

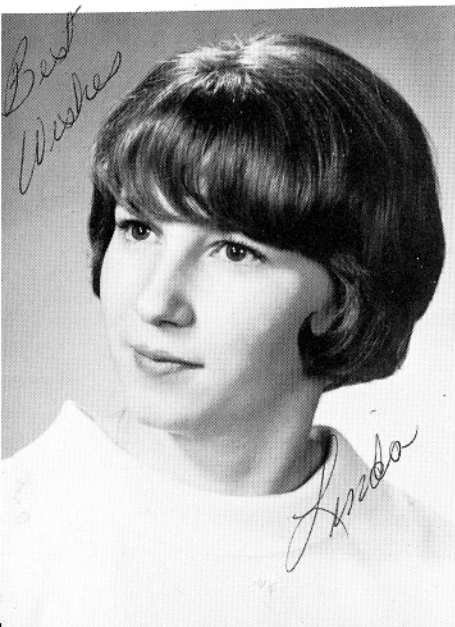


BARBARA WHITELEY
 Class Officer 3
 Glee Club 1, 2, 3, 4
 Press Club 2, 3, 4
 Pep Club 1, 2, 3, 4
 Drill Team 1, 2
 Laurel Staff 3, 4
 Le Coeur Staff 4
 Vocation Club 1, 2
 Legion of Mary 1
 Cheerleader 3, 4
 Christmas Queen 3
 Homecoming Princess 4



MICHAEL SUSALLA
 Glee Club 1
 Chess Club 3
 Basketball 3
 Baseball 2
 Stage Crew 1, 2, 3, 4

LINDA WALTER
 Glee Club 1, 2, 3, 4
 Press Club 1, 3, 4
 Pep Club 1, 2, 3, 4
 Laurel Staff 3, 4
 Le Coeur Staff 4
 Vocation Club 1
 Legion of Mary 1



JAMES YOUNG
 Glee Club 1
 Chess Club 3, 4
 Baseball 4
 Stage Crew 1, 2, 3, 4



ACCOMPLISHMENTS



Shown Cathy Andrews IHM Academy's 1965 Betty Crocker Homemaker of Tomorrow. She scored highest in a written examination taken by the senior girls.



At RIGHT is Ann Matson, the senior "Liberace" of the Academy!



Jay Snyder and Gary O'Connell shown ABOVE, took first and second respectively in the Coeur d'Alene "Elk's Leadership Award". Runner-up in the "Most Valuable Student Award", Gary is shown casting his ballot in the Student Council elections.

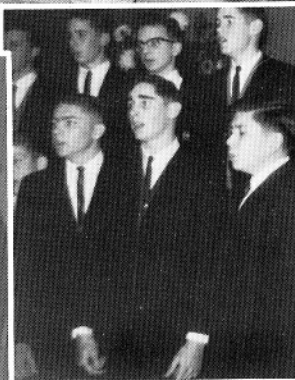
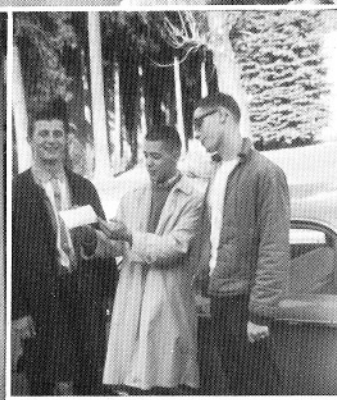
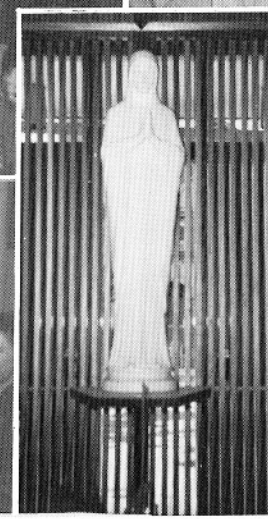
BELOW: G. O'Connell, J. McGregor, L. Roberts, and J. Snyder pose proudly as delegates to Girl's and Boy's State.



AT RIGHT: Gary Haler and Jay Snyder, Semi-Finalists in the National Merit Scholarship, are shown fumbling through pages in the school's library.



A. Davis



LUBS



LE COEUR STAFF

FROM LEFT TO RIGHT: L. Walter; W. Tyrrell; P. Rassier, Co-Ed.; B. Larsen; K. McMurray; G. O'Connell; J. McGregor, Co-Ed.; B. Whiteley.

VOCATION CLUB

BELOW: Members of the Vocation Club are shown making a visit to the Blessed Sacrament with their moderator Sister M. Philip Neri.



At RIGHT are members shown before the statue of Our Lady with their moderator, Sister M. Philip.

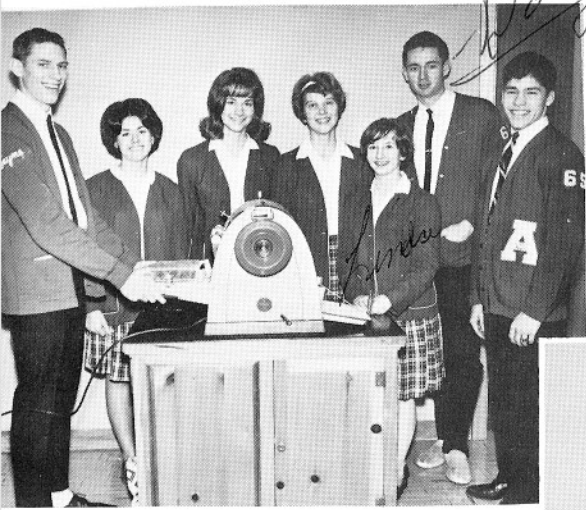
SODALITY



DRILL TEAM

FIRST ROW: J. Sanderson; L. Stockwell; C. Sullivan; G. Karst; K. Treichal; S. Galles; M. L. Primozych, leader; J. Riplinger; J. Martin; D. Chase; E. Matson; M. McFarland; P. Miles. SECOND ROW: D. Knight; B. Fanning; L. Kurdy; J. Fraijo; C. Chase; J. Karst; Mrs. Marlene Tosh, moderator; J. Jaeger; S. McMurray; P. Karst; L. McDonnell; J. McGregor; W. Eichhorn; A. Sonnichsen.





THE LAUREL STAFF

FROM LEFT TO RIGHT: W. Tyrrell; M. L. Primozich; M. Gross; J. McGregor, Co-Ed.; L. Walter; D. Lanfried, Co-Ed.; and Biron Larsen.

LEGION OF MARY

AT RIGHT: Legion members pose happily with their moderator, Sister M. Rosina.



GLEE



SQUIRES

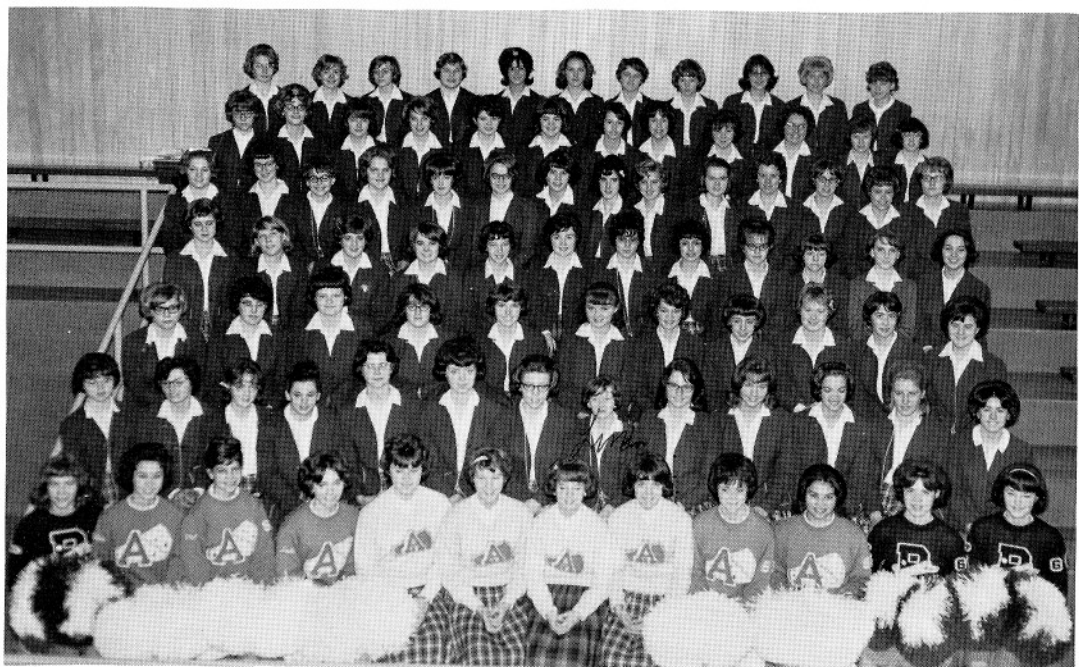
FROM LEFT TO RIGHT, FIRST ROW: P. Shields; T. PuFahl; D. Dunbar; S. Bowser. SECOND ROW: R. Kom; A. Brown; D. Sand; P. Sand; D. Peterson. THIRD ROW: J. Russell; B. McFarland; M. Ballantyne; P. Giesa; J. Hofmeister.



LEFT: Linda Roberts instructs interested math students as moderator, Sister M. Beatrice looks on.

EE CLUB





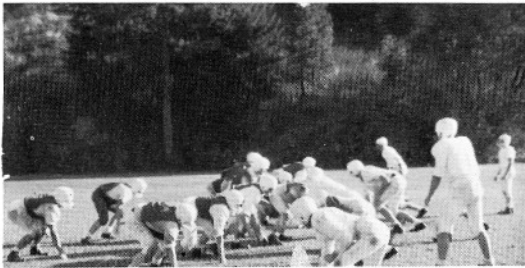
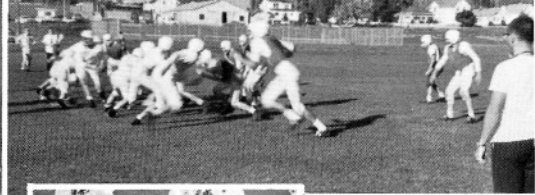
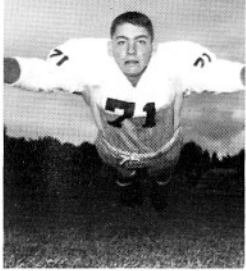
ABOVE: The Pep Club is shown with their officers, 1ST ROW, middle, from left to right: Ann Sonnichsen, Vice-President; Janice McGregor, President; Jill Riplinger, Representative; Mary Beth Matson, Secretary-Treasurer.



At LEFT the Varsity Cheerleaders: STANDING, from left to right: Barbara Whiteley, Ann Matson, and Jane Lauf. KNEELING are Kathleen McMurray and Linda Larsen.

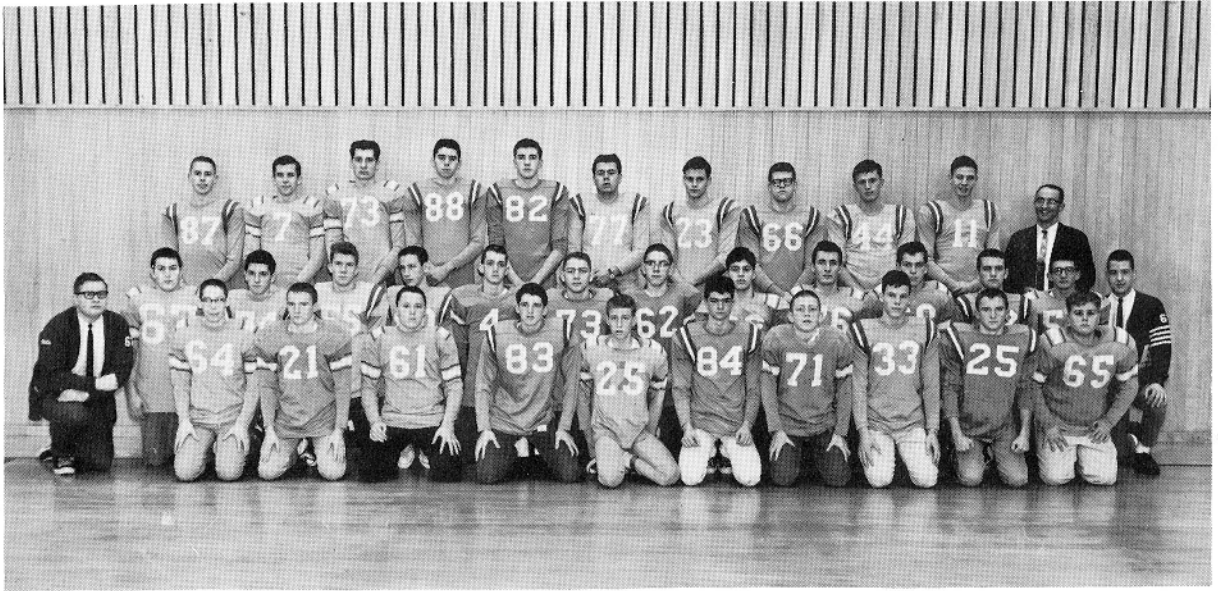
At RIGHT the Junior Varsity Cheerleaders: FROM LEFT TO RIGHT are Sharon Wachter, Susie Kryger, and Suzanne Koontz.





SPORTS

PANTHER ATHLETICS 1964-65



The I. H. M. Academy, under head Coach Gene Boyle, captured second place in the conference with a fine 5-2-1 record winning their last 4 games.

Bill McFarland was awarded the Cecil Hare Most Inspirational Trophy at a sports assembly in November. Shown with him are Coach Boyle, former Idaho head coach Dee Andros and present head coach Steve Musseau.

Academy	6	Post Falls	0
Academy	0	Bonnars Ferry	14
Academy	0	St. Maries	0
Academy	8	Lakeland	19
Academy	19	Kellogg J.V's	0
Academy	20	Kootenai	19
Academy	28	Priest River	0
Academy	20	Mullan	19



Tom Neeser-1964 winner of the Cecil Hare Most Valuable Player Award.



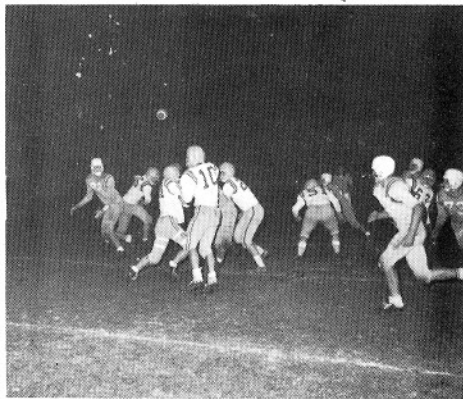
The Panthers were represented by six players on the All-Conference Team. Mike Peters (guard), Gary Haler (HM), Tom Neeser (fullback), Bill McFarland (guard), John Miller (HM), Gary Miles (end) are the all-star members.





John Hartnett, No. 7, Academy Quarterback, skirts around the right end as several Panther blockers clear the way against Kootenai.

AT RIGHT: The Panther line put a great rush on the Kellogg Quarterback, enabling John Miller to intercept this pass.



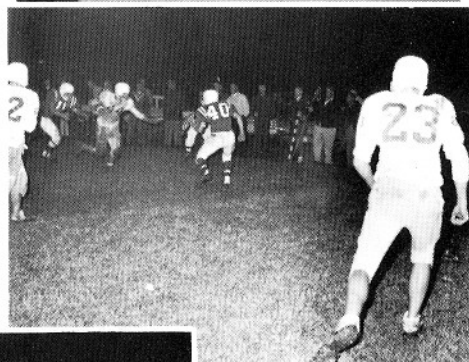
ABOVE: Eight senior players completed their high school careers in grand style. 1ST ROW: Biron Larsen, Gary Haler, Bill McFarland, and Phil Rassier -2ND ROW: Mike Cronquist, Tom Neeser, Gary O'Connell, and Gary Miles.



The Academy Panther looks mighty satisfied as it devours a Hawk, symbolizing the meeting of the Academy and Lakeland teams in their annual "BIG" game.

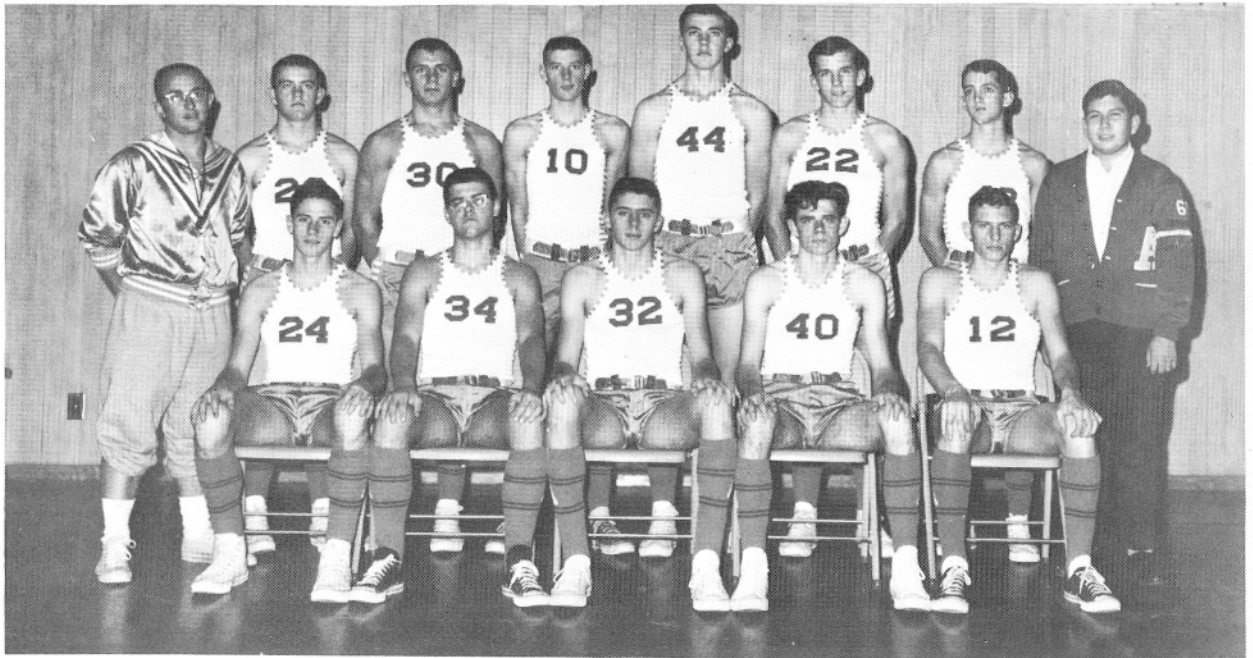
AT RIGHT: Tom Neeser, all-league fullback, makes good yardage in a game against Kootenai.

BELOW: Tom Neeser punts the Academy out of trouble as J. Rarick, M. Mihelich, C. Jacobson, M. Peters, and M. Cronquist withold the enemy.



BELOW: M. Cronquist carried out a good fake on this play as John Hartnett gave the ball to another man going up the middle.





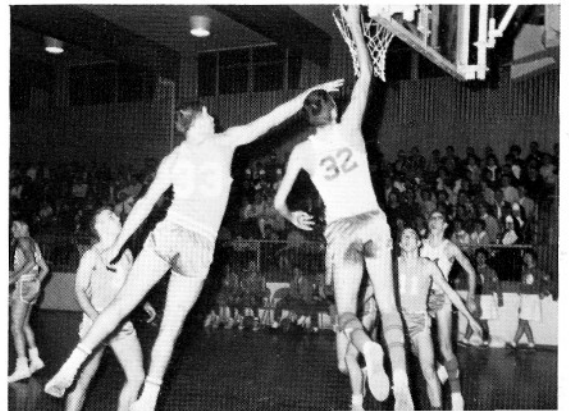
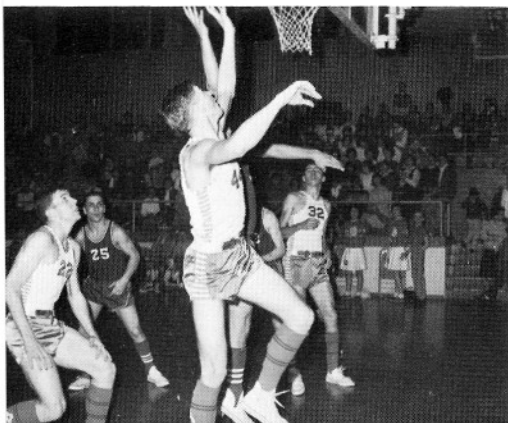
The I. H. M. Panthers finished one of the most successful seasons in many years under new Coach Gene Boyle. The team members are: 1ST ROW, G. O'Connell, B. McFarland, G. Miles, D. Treichel, W. Tyrrell. 2ND ROW, Coach Boyle, J. Rarick, G. Neeser, D. Boller, J. Miller, J. Hartnett, M. Elgee, and Manager J. Marchand.

Academy	60	Clark Fork	46	Academy	88	Plummer	66
Academy	89	Plummer	48	Academy	41	St. Maries	54
Academy	58	Priest River	45	Academy	51	Mullan	49
Academy	65	Kootenai	57	Academy	57	Lakeland	47
Academy	42	St. Gertrudes	29			Christmas Tourney	
Academy	84	St. Gertrudes	59	Academy	49	Lakeland	52
Academy	48	Mullan	72	Academy	39	Riverside	40
Academy	65	Kootenai	69			State Catholic Tournament	
Academy	70	Lakeland	44	Academy	64	St. Gertrude's	42
Academy	70	Priest River	41	Bishop Kelly	61	St. Gertrudes	50
Academy	51	St. Maries	55	Academy	57	Bishop Kelly	69
Academy	88	Clark Fork	90				

John Miller is shown sinking another two points in action against Kootenai.



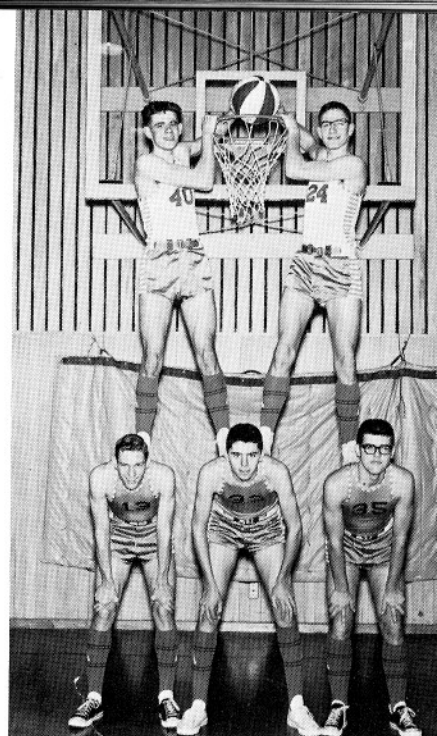
Gary Miles takes advantage of his height as he outmaneuvers a Clark Fork player to make a driving lay-in.



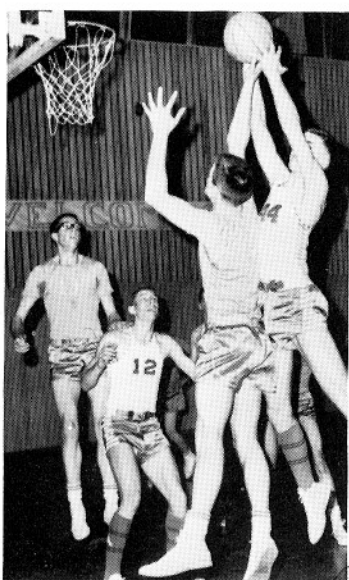
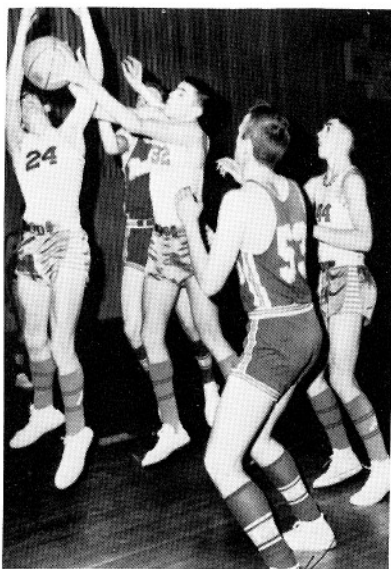


ABOVE: G. Miles, Panther center, scores against Clark Fork as G. O'Connell waits for a possible rebound.

AT RIGHT: W. Tyrrell, G. Miles, and B. McFarland form the foundation stones for D. Treichel and G. O'Connell in building a human pyramid to dunk the ball.

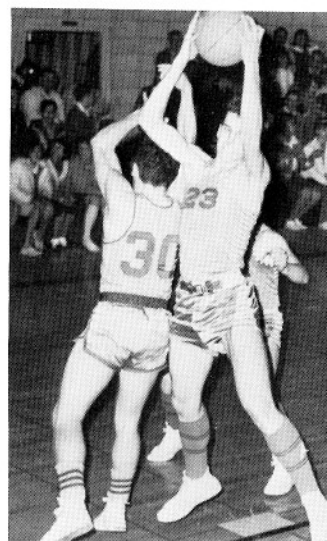


AT RIGHT: G. O'Connell and G. Miles fight each other for a rebound against Mullan.



AT LEFT: John Miller outbounds a St. Gertrude player as W. Tyrrell blocks out another.

*Mike thanks for the courage in you're a real panther Lots of love
 #.,@*.,?!*#", I want that ball!
 Chuck Harding*



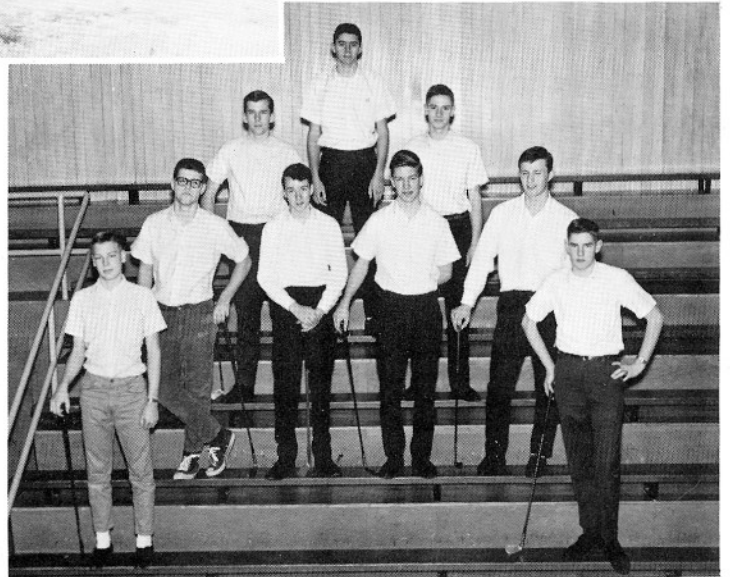
The Academy J. V. team, under Coach Chuck Harding, provided many thrills for the fans last season in winning most of their games. STANDING: L. Riplinger, P. Gray, E. Mihelich, S. Popiel, P. Sand, R. McFarland, P. Fromm, C. Jacobson, A. Brown, D. Sand, B. Elgee, J. Fiscus, M. Gray. KNEELING: Coach Harding flanked by managers F. Schaffner and P. Jacobson.





The Letterman's club pauses for a minute to have their respectable pictures taken, sacrificing their valuable time in the classroom just for the annual.

Academy Letterman in action during one of their Chicken feeds.



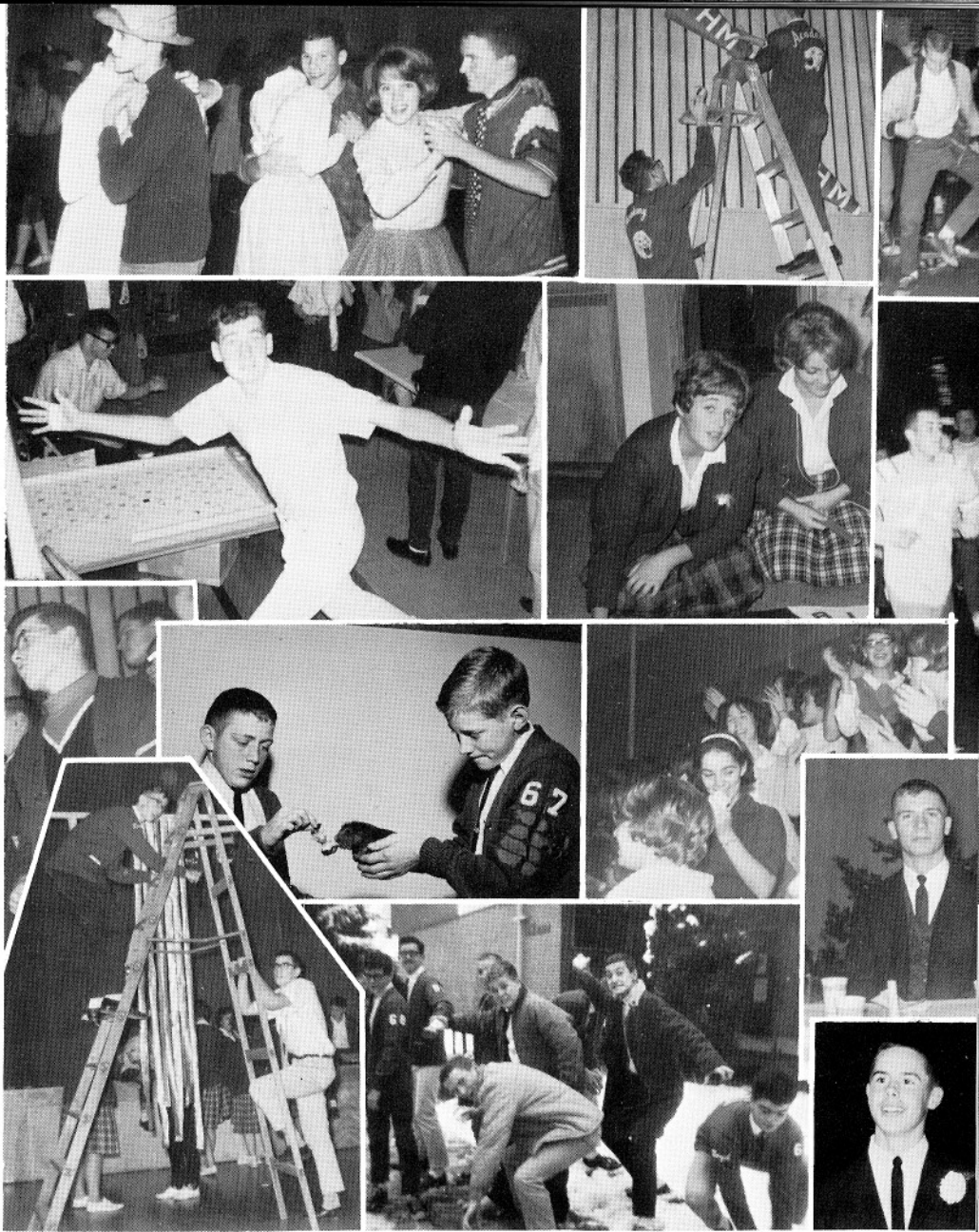
The first Academy Golf team had a very successful beginning under Coach Chuck Harding. Members are: R. Huetter, B. McFarland, J. Hartnett, G. Miles, G. O'Connell, T. Neeser, M. Ballantyne with J. Wakefield and J. Hofmeister crossing the "A".

Everybody's wearing a smile and who wouldn't if you were on your way to Cottonwood.



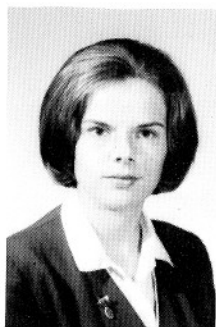
The baseball team takes a few instructions from Jim Rarick, "a veteran freshman player." The team had an almost even won-lost record and finished third in the league.



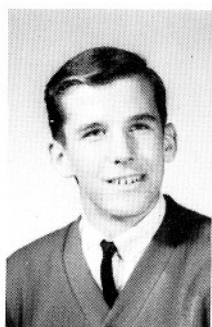


UNDERCLASSES

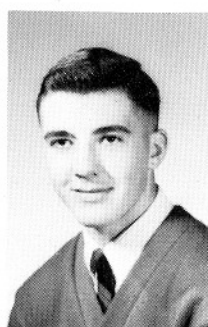
JUNIOR CLASS



Robin Hultner
President



John Hartnett
Vice-President



John Miller
Secretary



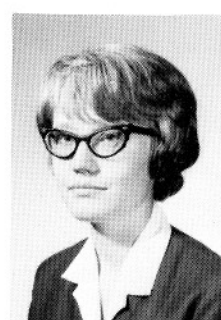
Jill Riplinger
Treasurer



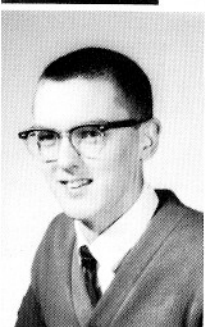
John Wakefield
Class Rep.



Sally Amey
David Boller



Mary Brophy
Marianne Cieryca



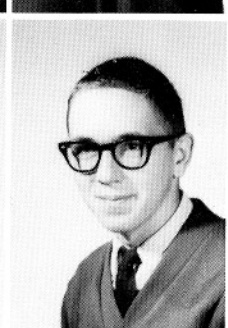
Edward Dunn
Michael Elgee



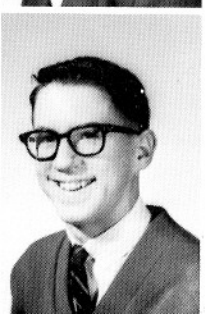
Virginia Fraijo
Haldeen Galles



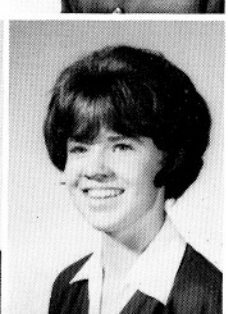
Sheila Hare
Mary Harrington



Michael Harrington
Larry Jacobs



Jerry Jaeger
Lucille Jessick



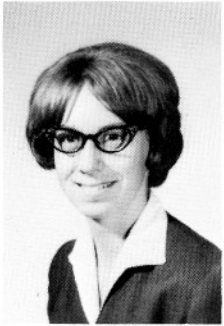
Patricia Keane
Suzanne Koontz



Chris Krimm
Ann Kryger
Linda Kurdy



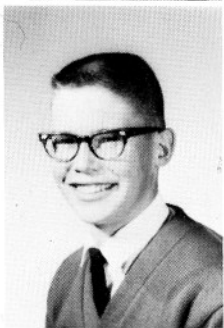
Darrell Larsen
Gleta Long



Patricia McCormick
Linda McDonell
Anne MacDonald
Mary Beth Matson



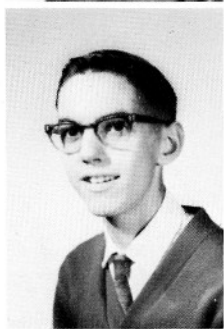
Robert Meyers
Michael Mihelich
Stephanie Montreuil
Rosemarie Novak



Michael Nutt
Michael Peters
Lana Potter



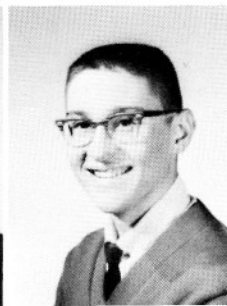
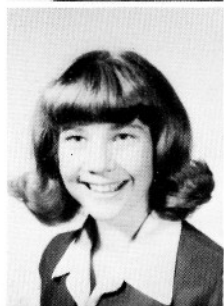
Thomas Pringle
Janice Purdy



Michael Ransom
Lynne Romans
Donald Sand



Judy Sanderson
Linda Stockwell



Sharon Wachter
Elaine Wilson
Kristina Yacks
James Yaeger

SOPHOMORE CLASS

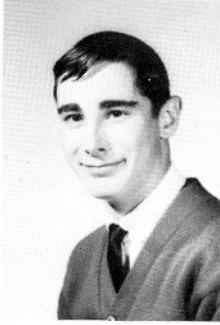
Robert McFarland
President



James Rarick
Vice-President



Jennifer Kirsch
Secretary



James Russell
Class Rep.



Robert Delyea
Class Rep.



Margaret Riplinger
Treasurer



Mark Ballantyne



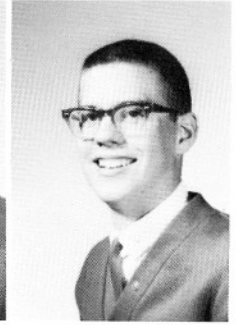
Phyllis Bauman



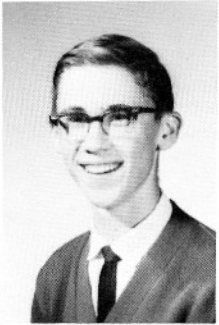
Steve Bowser
Diane Chase



Kenneth Dingman
Stephen Dolan



Dwayne Dunbar
Joseph Erickson



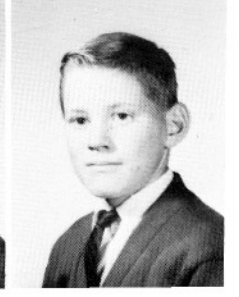
Leslie Fraijo
Lynne Gebhart



Patrick Giesa
Stanley Grygny



Rebecca Hare
Patrick Harrington





James Hofmeister
Robert Huetter
Richard Jacobson



Sheila Johnston
Virginia Karst



Kris King
Richard Kom
Christine Koontz
Kaylen Kuka



Lawrence Lenz
Robert
MacDonald
Patricia Mathes



Gerald Neeser
Nancy Novak



James Nutt
David Peters
Danny Peterson
Victoria Peterson



Steve Popiel
Hazel Porter
Patricia Ransom



William
Riplinger
Paul Sand



Fred Schaffner
Janice Smith
Joseph Smith



Catherine
Thompson
Kathleen
Treichel

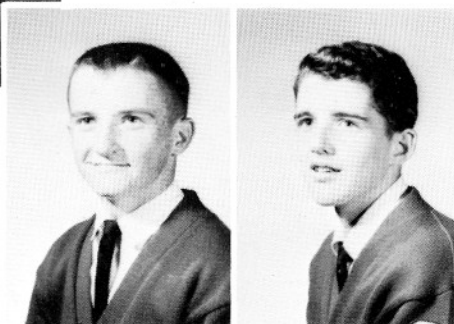
FRESHMAN CLASS



Mary McFarland
President

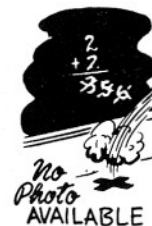
Lance Koep
Vice-President

Patricia Miles
Secretary



Patrick Gray
Class Rep.

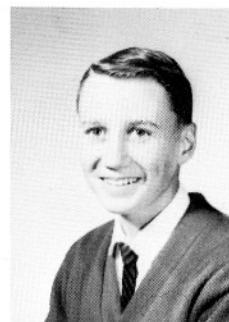
Robert Elgee
Treasurer



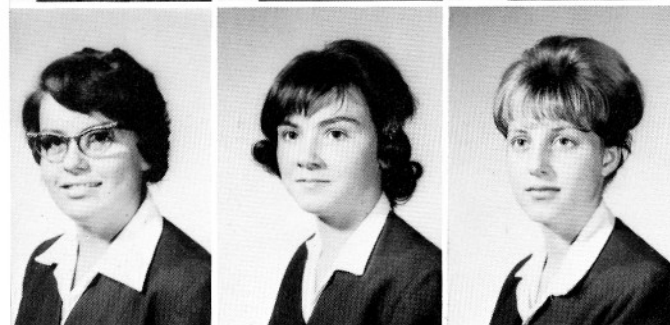
Lawrence
Riplinger
Class Rep.



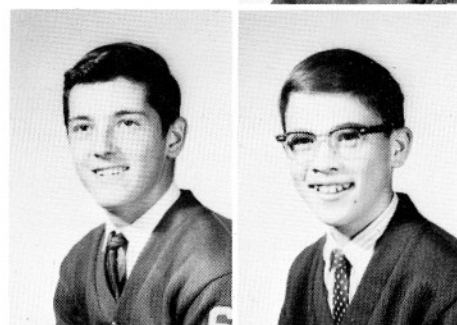
Donna Anderson
Virginia Bowser
Patrick Brophy



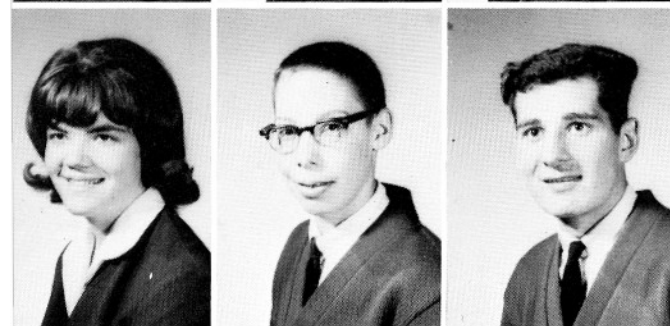
Allen Brown



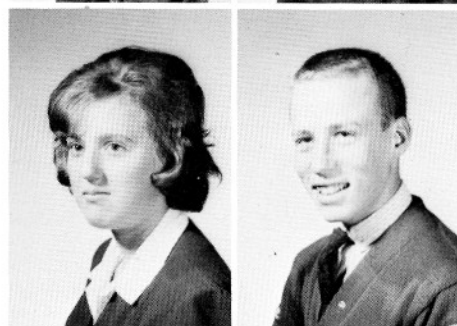
Deborah
Castellan
Constance
Chase
Kathleen
Cronquist



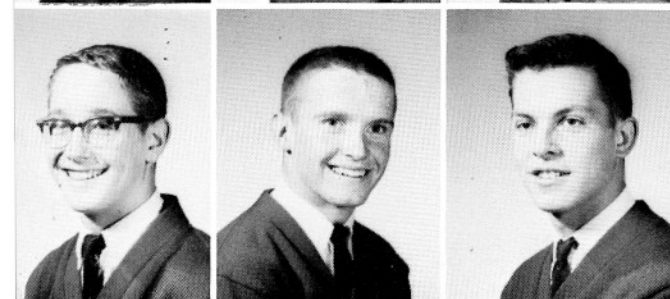
David Diemert
Todd Erickson



Barbara Fanning
John Fiscus
Paul Fromm



Susan Galles
Paul Gebhart



James Giesa
Michael Gray
Chris Jacobsen

Joan Jaegar





Gloria Karst
Patricia Karst
Donagene Knight



Ronald Koep
Janice Lovell



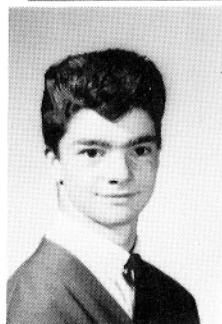
Judith Martin
Thomas Martin
Ellen Matson



Edward Mihelich
Patrick Miller



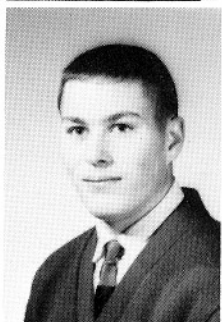
Kenneth
Montreuil
Thomas
McFarland
Sally
McMurray



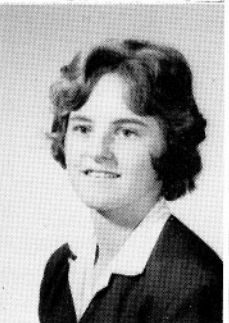
Lloyd Ogden
Donna Oveson



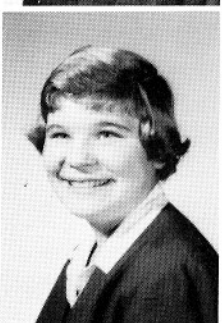
Terry PuFahl
Susan Ransom
Wesley Romans



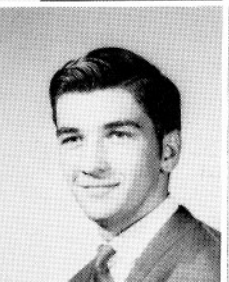
David Rosen
Paul Shields



Elizabeth
Sigmond
Candie Smith
Barbara
Sonnichsen



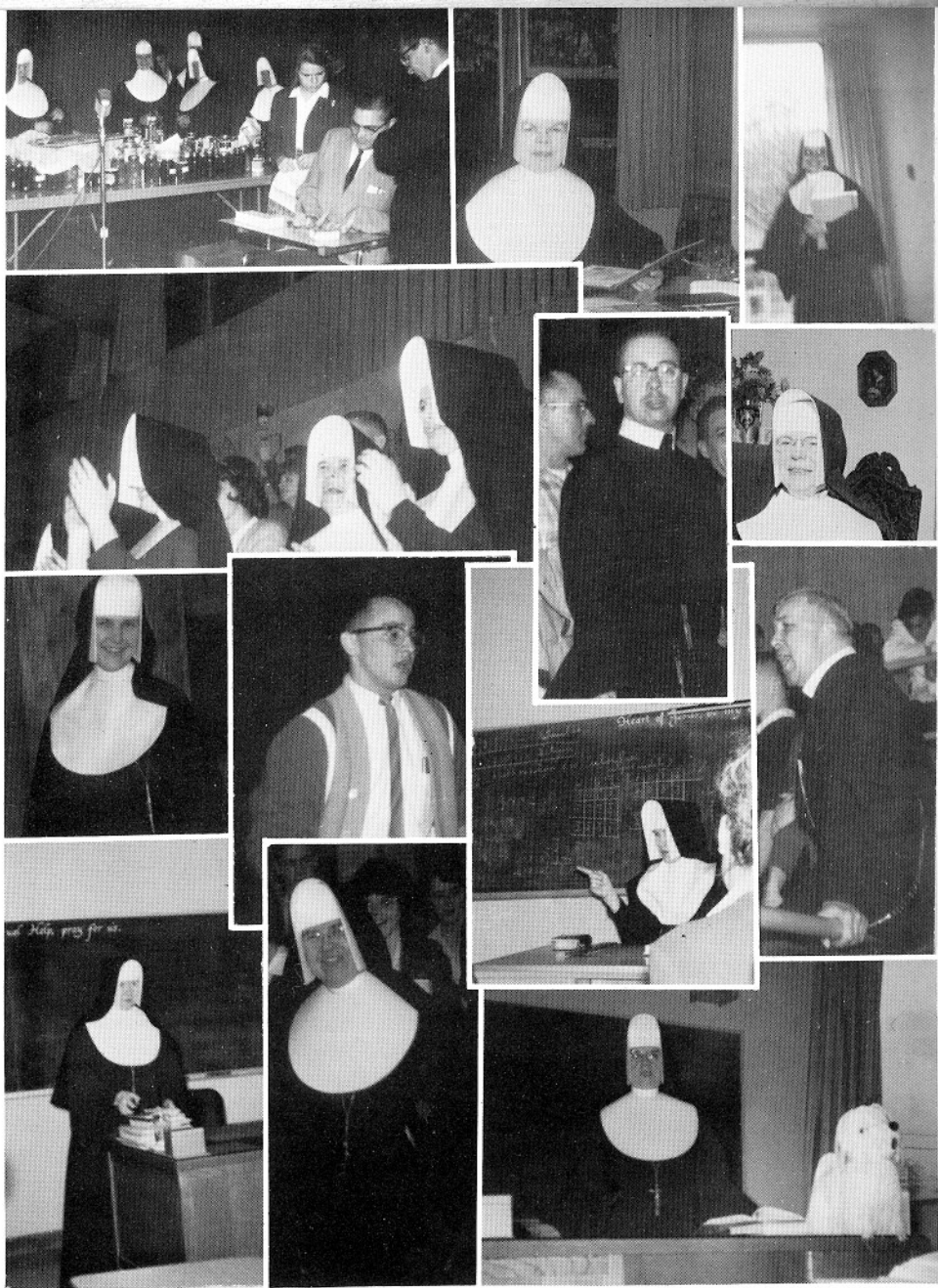
Colleen Sullivan
Marcia Swank



Janis Valente
Clarence
Vedder
Gary Williams



Jolene Wolfe
Patricia Yacks



ACULTY



SISTER M. MARIEL
Freshman
English, Typing,
Shorthand
Religion



SISTER M. ROSINA
Freshman
English, Homemaking
Religion

SISTER M. ALPHONSA
French, Latin,
Music
Religion

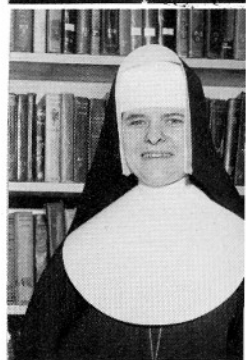


SISTER M. PHILIP NERI
Junior
History, Geography,
Social Sciences
Religion

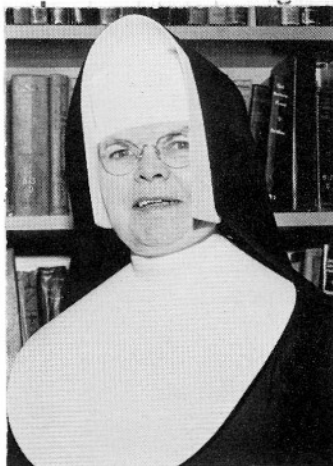


MR. EUGENE BOYLE
Sophomore
Science, Math
P. E., Coach

SISTER M. PHILIP
Sophomore
English, Math, Art
Religion



SISTER M. BEATRICE
Senior
Math, Science
Religion



SISTER M. AVELLINA
Principal
Latin

SISTER M. ALOYSIA
Music



MR. JOHN MILLHEISLER
Bookkeeping
Mech. Drawing

MRS. NORMAN BAKER
Librarian

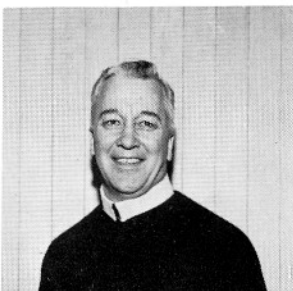
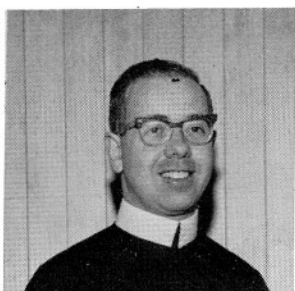
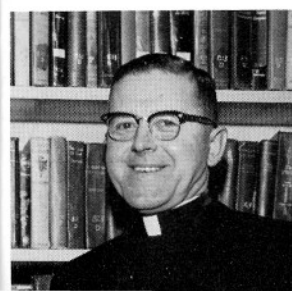


FATHER T. LAFEY

FATHER W. CLEARY

FATHER D. DEBOLT
Pastor

FATHER R. LASSELL



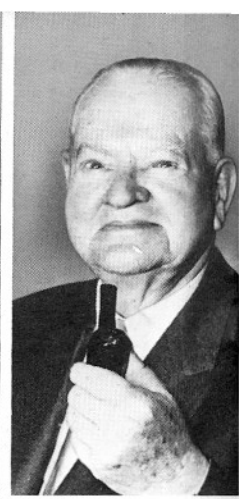
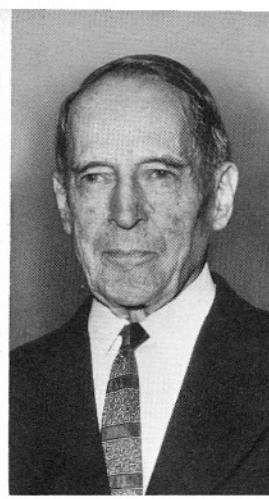
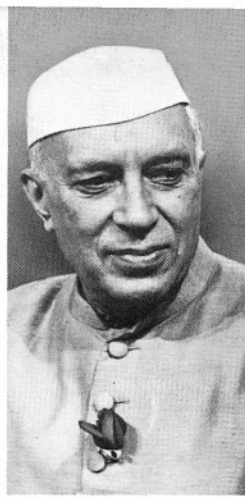
PATRONS

Senior

Acuff Realty
Alkies
Mrs. Anderson
Ankey's IXL
Arctic Circle
Atlas Tie
Mr. and Mrs. Baurenfiend
Big "Y" 66
Boat Drive-In
Cash & Carry
Cd'A Building Supply
Cd'A Press
Clark's Jewelry
Commercial Printing
Cope Electric
Craft and Hobby Shop
De Armond & Joyner Lumber Co., Inc.
Eagles
Elsey's Cafe
English Funeral Chapel
Everson's
Fashionette Dress Shop
First Security Bank of Idaho
Fisher's Clothiers
Ford Tractor
Fowler's
French Cleaners
Gardner's Supply Co.
General Telephone Co.
Gift Center
Hague & Hague
Hall Plumbing and Heating
Hayden Beauty Nook
Hayden Hardware
Hayden Lake Barber Shop
Hayden Market
Hayden Pharmacy BB's
Holland's Market
Holmberg and Associates
Humpty Dumpty Egg Ranch
Idaho First National
Idaho Water Co.
Interstate Typewriter Co.
John's Barber Shop
Lake City Lanes
Lake City Market
Leader Printing
Leahy's
Mr. Leroy Merryman
Lighthouse Sporting Goods
Lucky Lager & Budweiser
Luke's Transfer and Storage
Maverick Station
McEuen's
McFarland Realty
Mid-Town Variety
Miller's Bike Shop
Nielsen's Texaco
Northside Hardware
Panhandle Distributors, Inc.
Pendar, Inc.
Mr. and Mrs. Ken Peters
Pin Cushion
Pines Bakery
Plaza Barber Shop
Redmond's Thrift Store
Rex Drug
Rutten's Thrift Store
Sherman Drug Store
Mr. W. P. Shrum
Sonnichsen Agency, Inc.
Standard Oil Co. of California
Stockwell Paint
Undy's Frostop
Withers Grocery
Wilson Drug Store
Woodcock's Drug Store, Inc.
Yates-Morse Funeral Home



Chou Listens—Red Chinese Premier Chou En-Lai held an earpiece as he listened to an address by the Soviet Union's new party leader, Leonid Brezhnev, during a meeting of world Communists in Moscow on November 6. Alexei Kosygin, Soviet premier, is at right.



They Died in '64—These world figures died during the year. From left are Prime Minister Nehru of India, General Douglas MacArthur of the United States and former President Herbert Hoover.



Stretcher Cases—Wounded white hostages and Belgian paratroopers were carried from rescue plane at Leopoldville after it arrived from Stanleyville November 24. The paratroopers descended on the rebel-held Congo city just as a massacre of hostages began, and their quick work saved the lives of hundreds.

New President—Foreign Minister Giuseppe Saragat (right) was formally notified in Rome on the night of December 28 that he had been elected president of Italy.

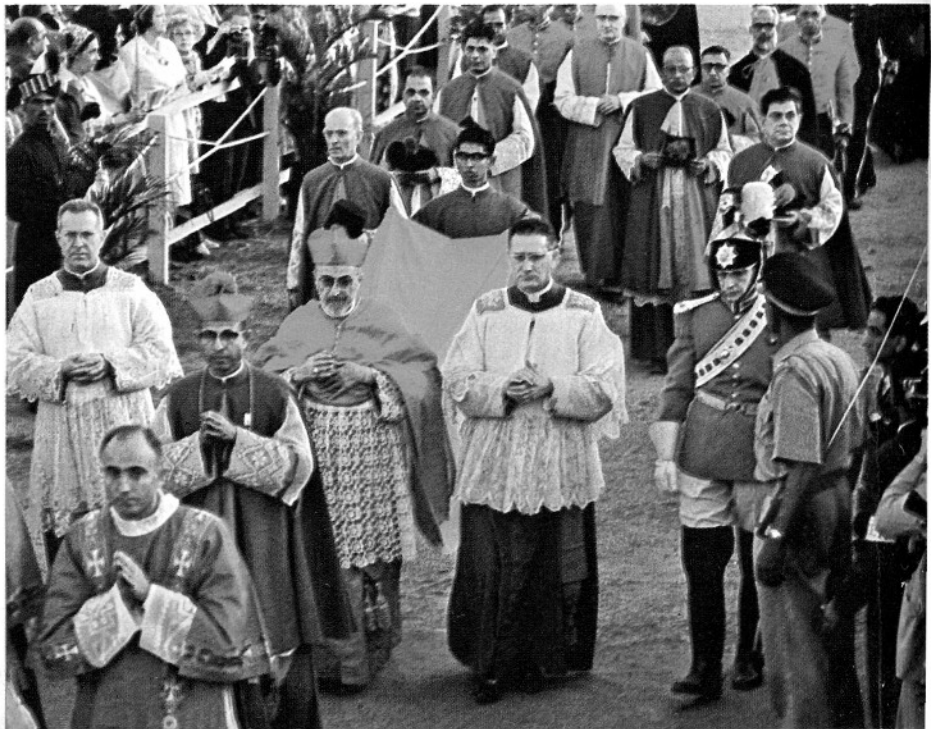


World Events in Review—1964

Alliance Talks—British Foreign Secretary Patrick Gordon Walker, left, talked with West German Chancellor Ludwig Erhard in Bonn on November 15 during efforts to find a compromise on a new nuclear force for the troubled Atlantic Alliance.



Pope Visits India—The 38th International Eucharistic Congress opened in Bombay, India, on November 28. In December, Pope Paul VI made the longest papal journey in history to attend sessions of the congress.





Winnie at 90—Winston Churchill acknowledged cheers of well-wishers who gathered outside the window of his Hyde Park home in London on November 30. The occasion was his 90th birthday.



Tokyo, Japan—William H. Mills (left) of the U. S. A., led Mohamed Gamoudi of Tunisia across the finish line to win the Olympic 10,000 meter event on October 14.



Swampy Victory—A group of Viet Cong prisoners sat quietly in Camau last October while guarded by armed South Vietnamese troops. The prisoners were among those captured during a major battle on the Camau peninsula.



Reunions at the Wall—An East German mother embraced her West German children last November at the Helmstedt railway station after the border dividing East and West Germany was opened for the first time since 1961 for East Germans.



Change of Power—Alexei Kosygin, 60, left, and Leonid Brezhnev, 57, respectively, were named to be premier of the Soviet Union and secretary of the Communist party on October 15. They took over the posts vacated by the resignation of Nikita Khrushchev.

Space Team Welcomed—Cosmonauts Konstantin Feoktistov, Col. Vladimir Komarov and Dr. Boris Yegorov, left to right, waved to the crowd from an auto during their greeting in Moscow on October 19. The trio had just returned from a 16-orbit flight in space in the "Vokshod."

